

MB16210TG Magnum Board Horizontal Shiplap Details

Sheet List	
Sheet Number	Sheet Name
000	Cover Sheet
1/15	Concrete Foundation Detail
2/15	Timber Foundation Detail
3/15	External Corner Detail
4/15	Internal Corner Detail
5/15	Eave - Section Detail
6/15	Barge - Section Detail
7/15	Roof - Wall Ridge - Section Detail
8/15	Canopy Junction - Section Detail
9/15	Horizontal Control Joint
10/15	Vertical Control Joint
11/15	Typical Head and Sill Detail
12/15	Typical Jamb Detail
13/15	Deck Threshold Detail
14/15	Pipe Penetration - Plan & Section Detail
15/15	Batten Fixing

150mm
100
50
0 10mm

21/08/2023 10:56:33 am



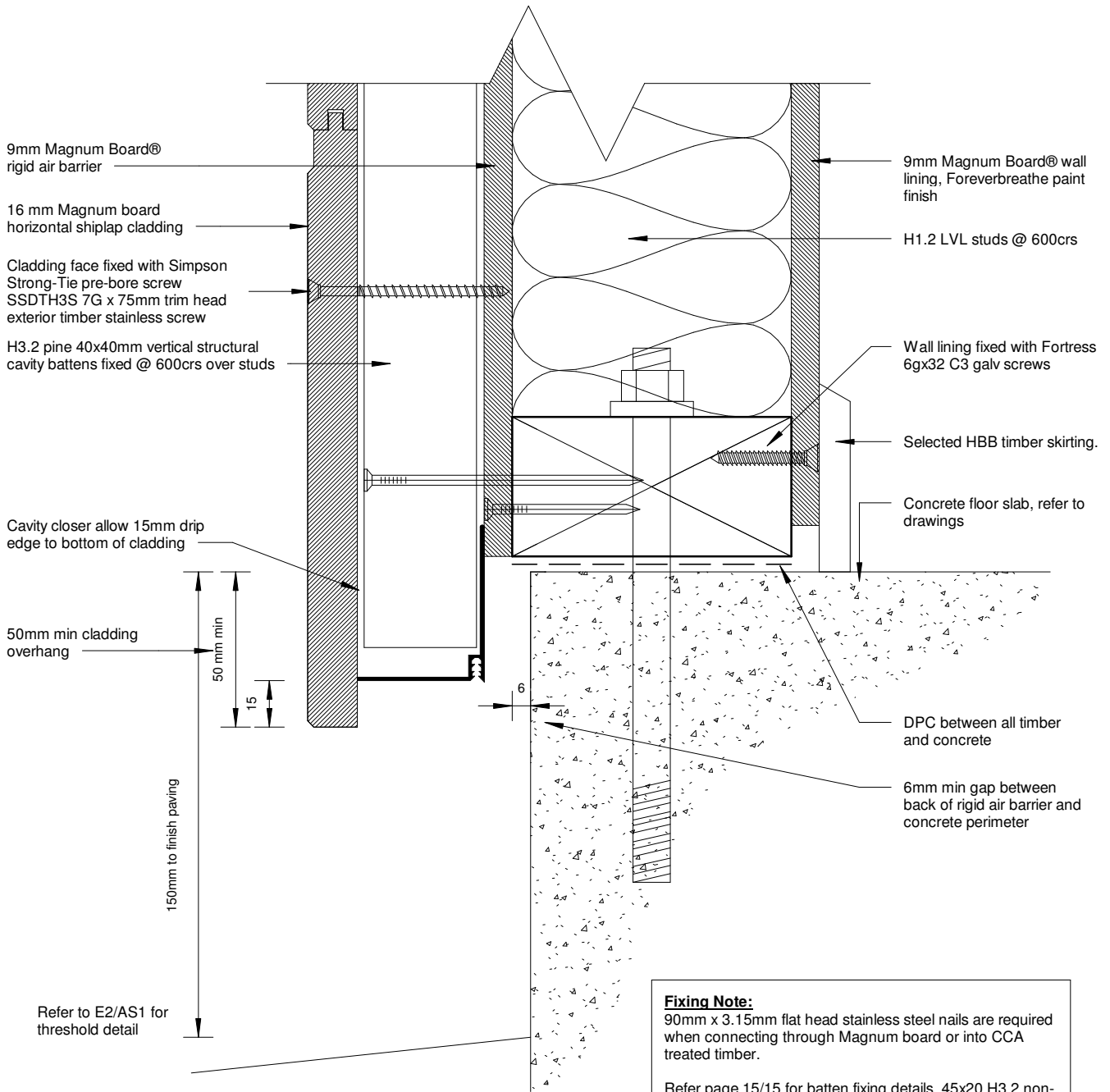
000

Magnum Board Horizontal Shiplap Details

Cover Sheet



150mm
100
50
10mm
0



Concrete Foundation Detail

1 : 2

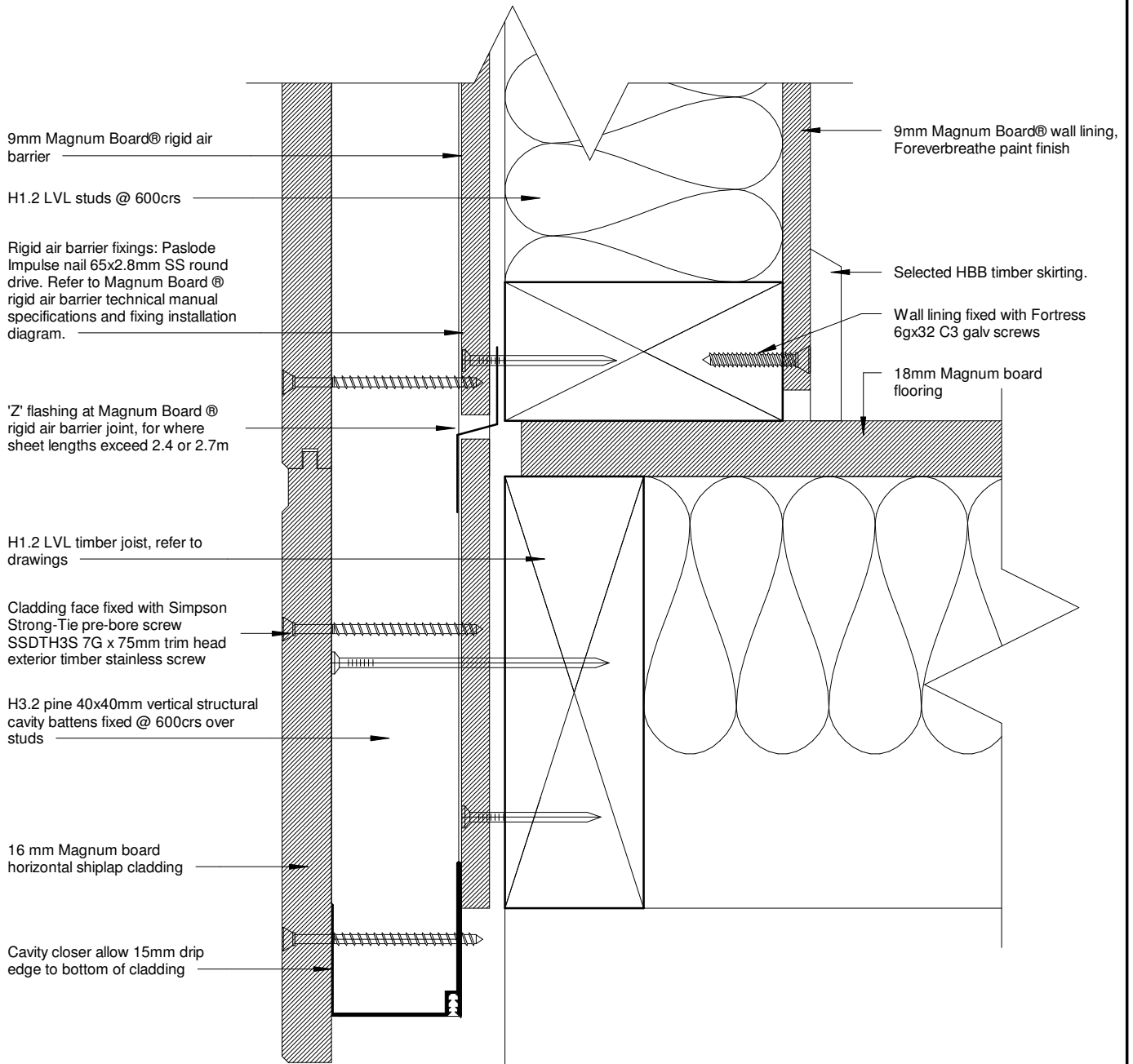
Fixing Note:
90mm x 3.15mm flat head stainless steel nails are required when connecting through Magnum board or into CCA treated timber.

Refer page 15/15 for batten fixing details. 45x20 H3.2 non-structural cavity battens can be installed provided cladding fixing is guaranteed at a minimum 30mm framing.

21/08/2023 10:56:33 am



150mm
100
50
0 10mm



Fixing Note:
90mm x 3.15mm flat head stainless steel nails are required when connecting through Magnum board or into CCA treated timber.

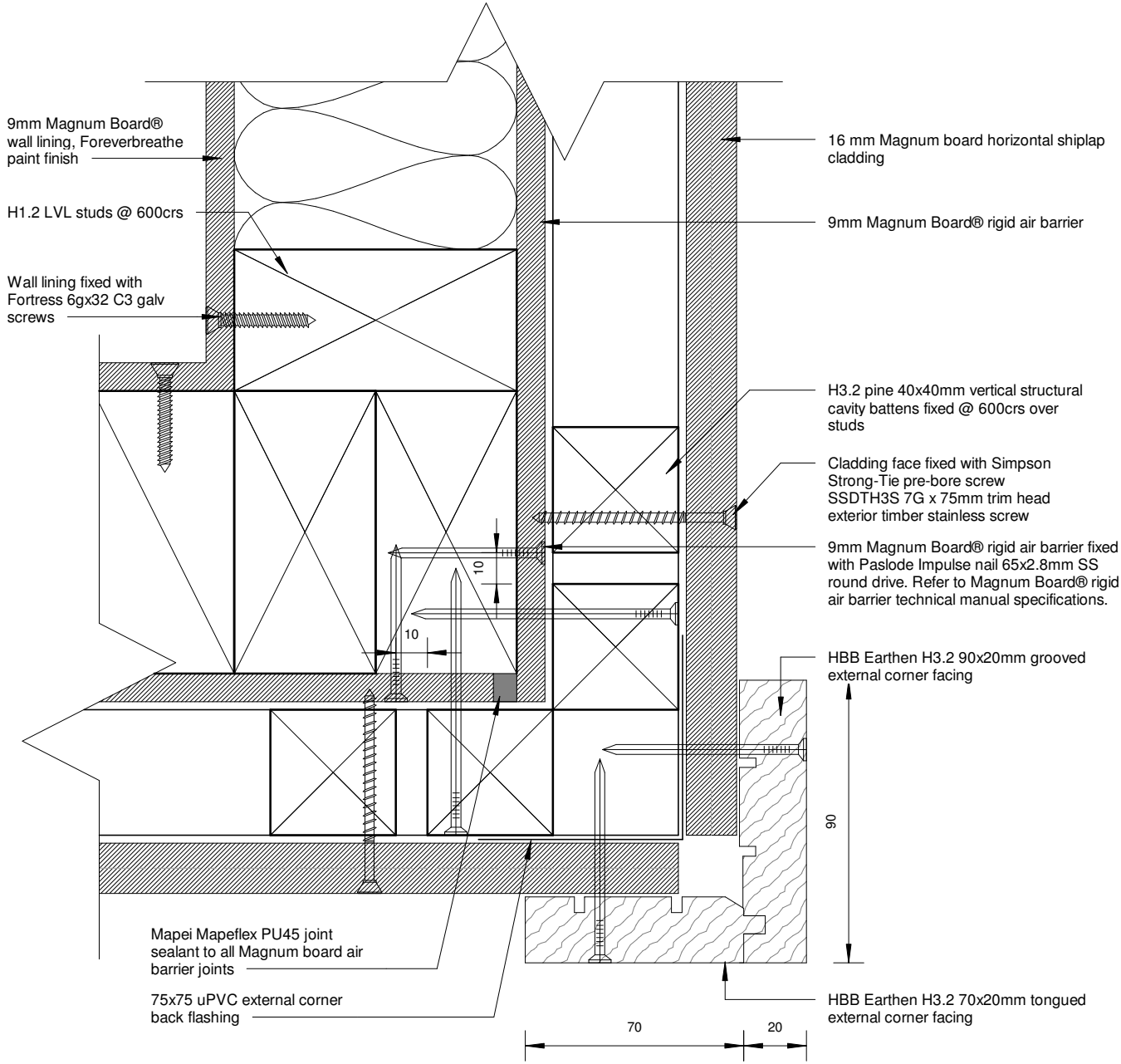
Refer page 15/15 for batten fixing details. 45x20 H3.2 non-structural cavity battens can be installed provided cladding fixing is guaranteed at a minimum 30mm framing.

Timber Foundation Detail
1 : 2

21/08/2023 10:56:33 am



150mm
100
50
0 10mm



External Corner Detail

1 : 2

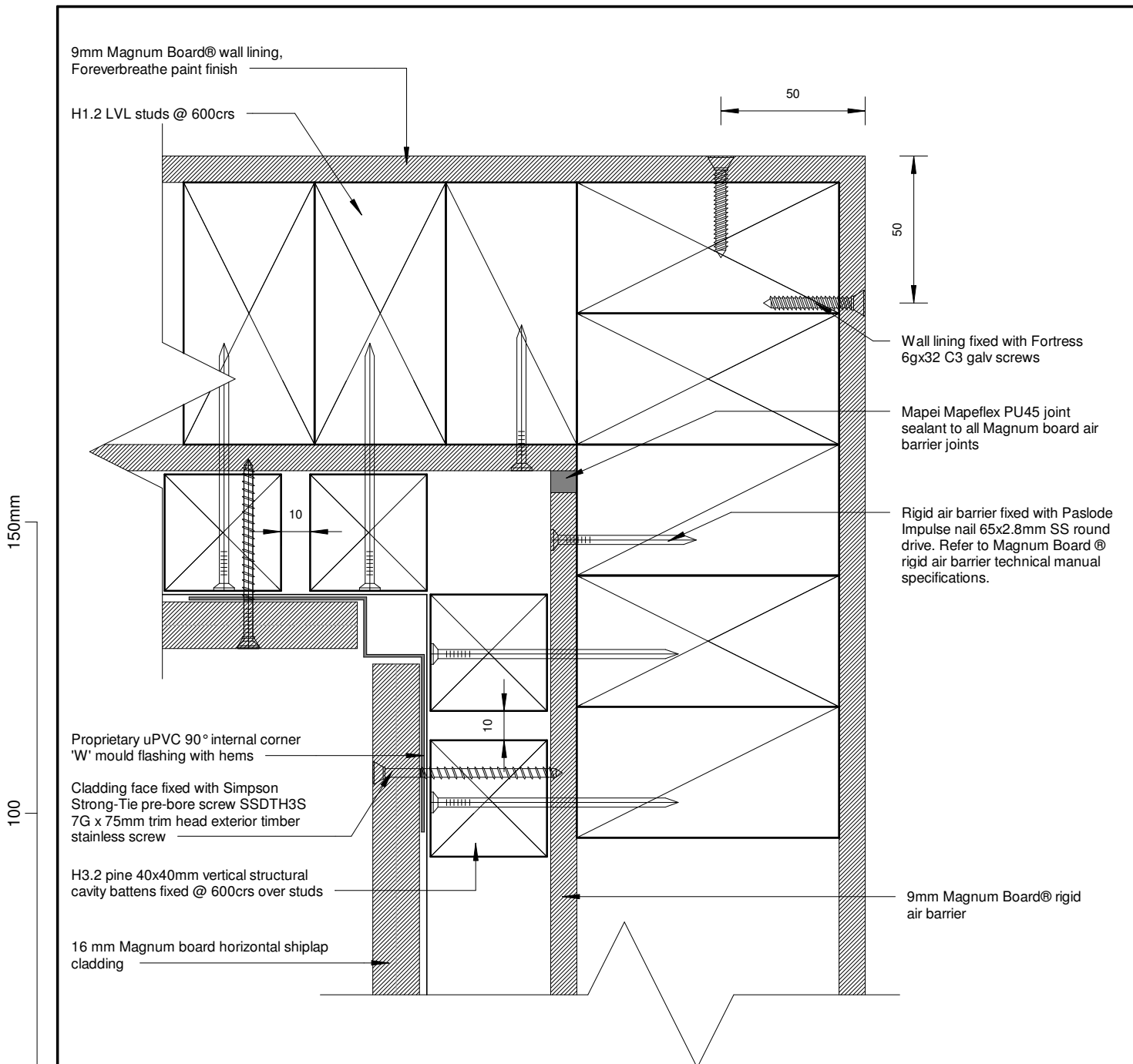
Fixing Note:

90mm x 3.15mm flat head stainless steel nails are required when connecting through Magnum board or into CCA treated timber.

Refer page 15/15 for batten fixing details. 45x20 H3.2 non-structural cavity battens can be installed provided cladding fixing is guaranteed at a minimum 30mm framing.

21/08/2023 10:56:34 am





Internal Corner Detail

1 : 2

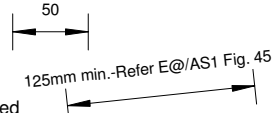
Fixing Note:
 90mm x 3.15mm flat head stainless steel nails are required when connecting through Magnum board or into CCA treated timber.
 Refer page 15/15 for batten fixing details. 45x20 H3.2 non-structural cavity battens can be installed provided cladding fixing is guaranteed at a minimum 30mm framing.

21/08/2023 10:56:34 am



150mm
100
50
0 10mm

Selected profiled metal roofing on roofing underlay
Ensure roofing underlay is laid horizontally and over top of eaves flashing. Ensure roof fixing does not penetrate eave flashing



Folded 0.55BMT Prefinished metal eaves flashing with hem at top edge

Selected spouting

Provide solid blocking for fixing
HBB Earthen® fascia board

9mm Magnum Board® soffit lining, flush stopped, paint finish
HBB Earthen® soffit moulding

16 mm Magnum board horizontal shiplap cladding

Cladding face fixed with Simpson Strong-Tie pre-bore screw SSDTH3S 7G x 75mm trim head exterior timber stainless screw

H3.2 pine 40x40mm vertical structural cavity battens @ stud crs. Nail fixed @ 600crs. Refer schedule below

9mm Magnum Board® rigid air barrier fixed with Paslode Impulse nail 65x2.8mm SS round drive. Refer to Magnum Board® rigid air barrier technical manual specifications.

Roof structure in accordance with NZS3604 or specific Engineering design

H1.2 ceiling battens, refer to drawings

Wall lining fixed with Fortress 6gx32 C3 galv screws

H1.2 LVL studs @ 600crs

9mm MAGNUM board® lining, paint finish

Eave - Section Detail

1 : 5

Fixing Note:
90mm x 3.15mm flat head stainless steel nails are required when connecting through Magnum board or into CCA treated timber.

Refer page 15/15 for batten fixing details. 45x20 H3.2 non-structural cavity battens can be installed provided cladding fixing is guaranteed at a minimum 30mm framing.

21/08/2023 10:56:34 am



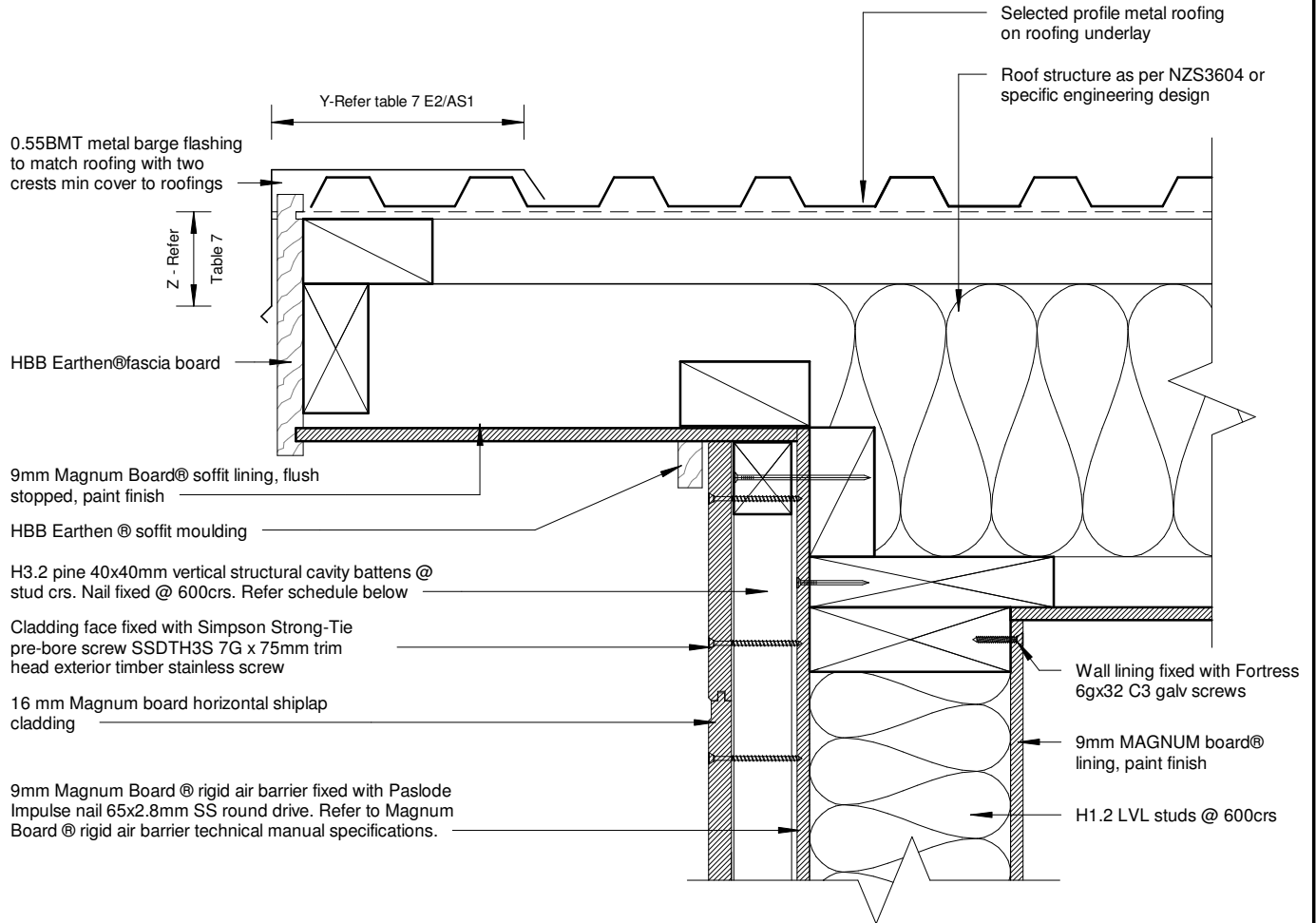
150mm

100

50

10mm

0



Barge - Sectional Detail

1 : 5

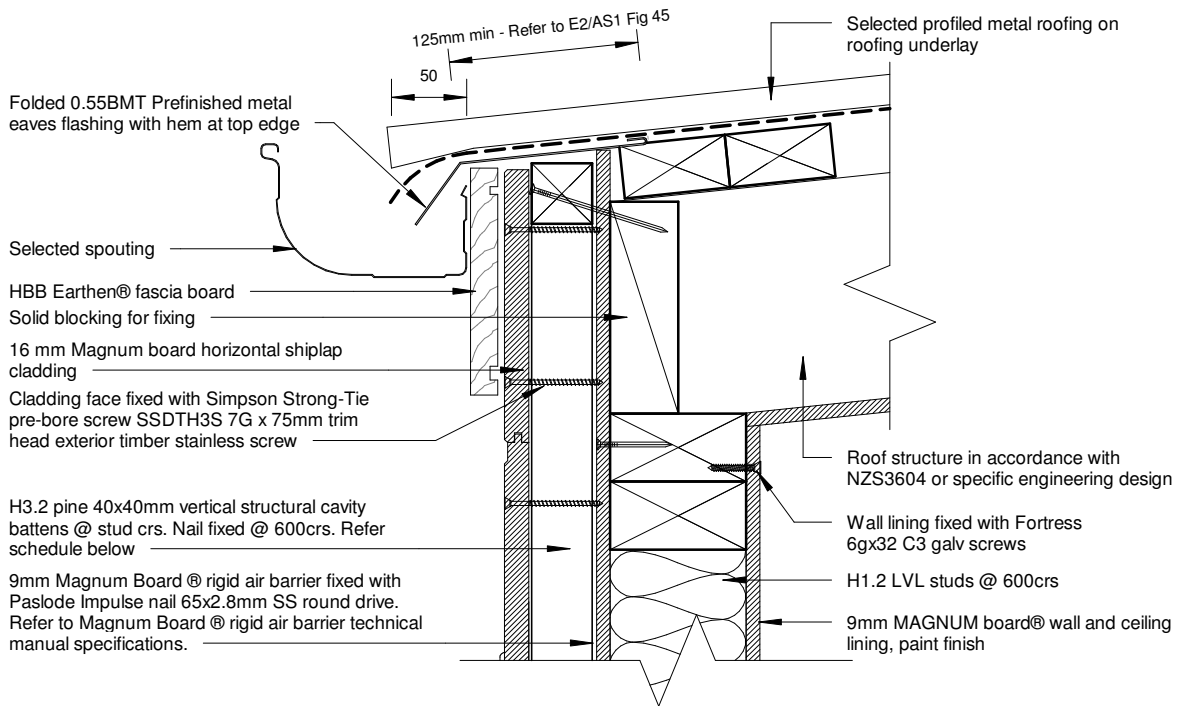
Fixing Note:

90mm x 3.15mm flat head stainless steel nails are required when connecting through Magnum board or into CCA treated timber.

Refer page 15/15 for batten fixing details. 45x20 H3.2 non-structural cavity battens can be installed provided cladding fixing is guaranteed at a minimum 30mm framing.

21/08/2023 10:56:34 am





Barge - No Soffit Detail

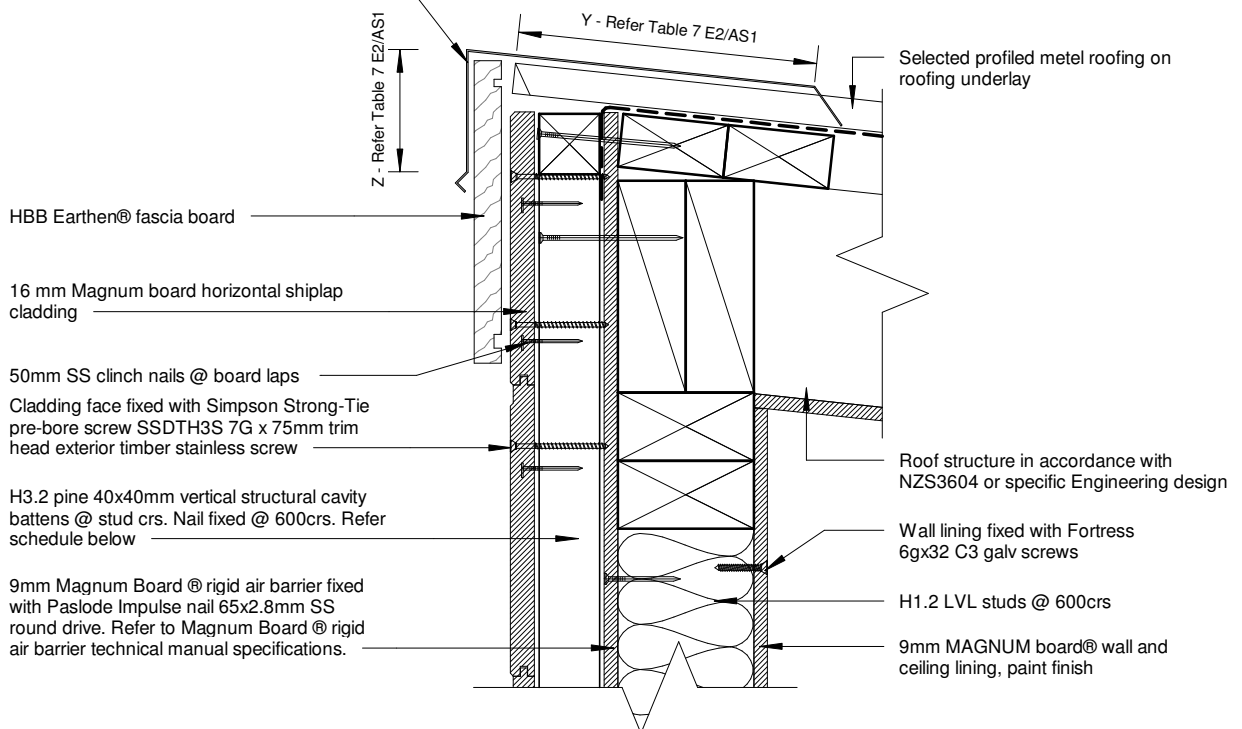
1 : 5

Fixing Note:

90mm x 3.15mm flat head stainless steel nails are required when connecting through Magnum board or into CCA treated timber.

Refer page 15/15 for batten fixing details. 45x20 H3.2 non-structural cavity battens can be installed provided cladding fixing is guaranteed at a minimum 30mm framing.

Prefinished metal barge flashing. Confirm min cover requirements over with E2/AS1 Table 7



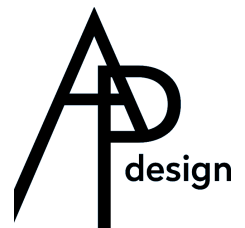
Roof - Wall ridge - Section Detail

1 : 5

7/15

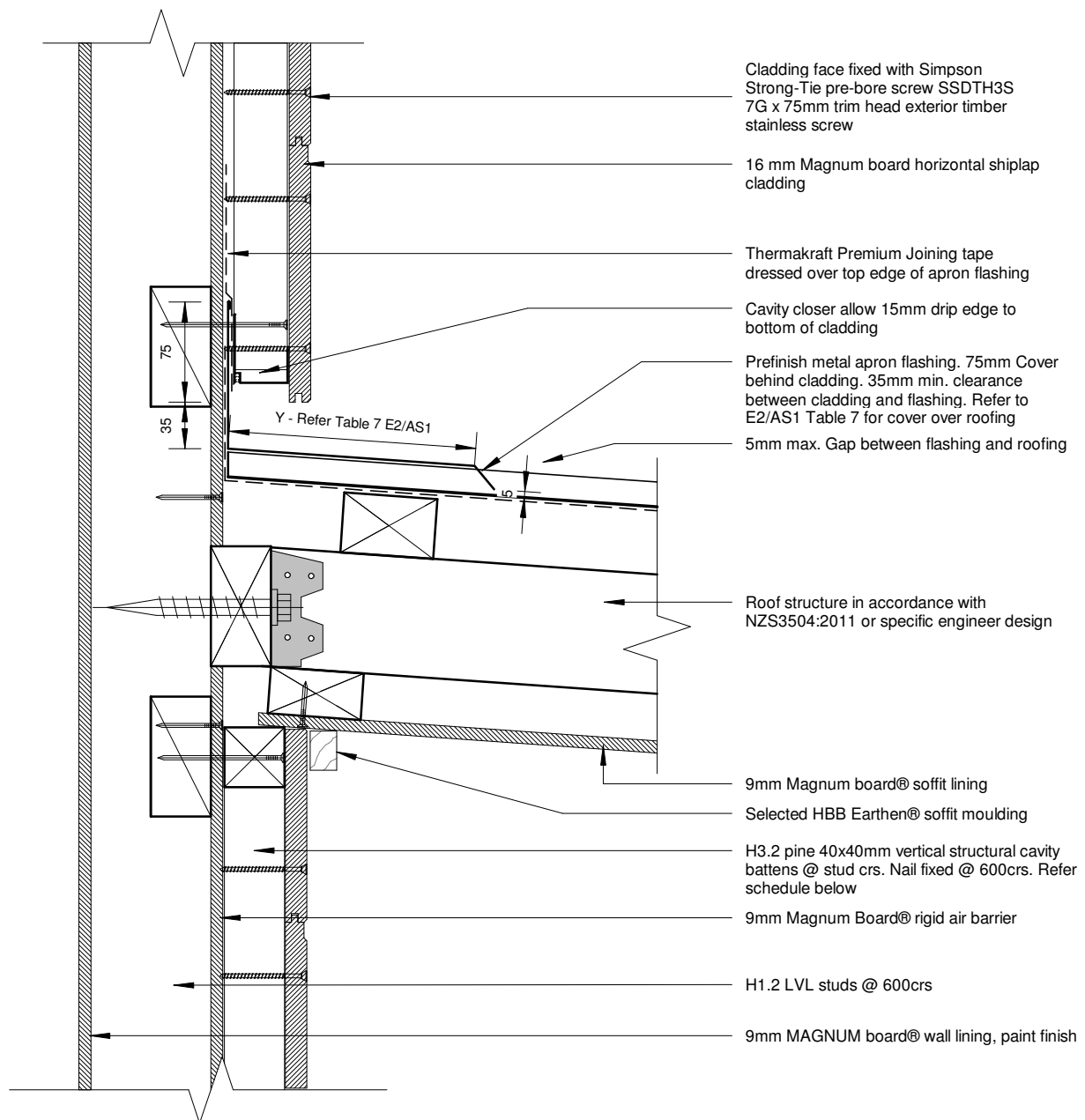
Magnum Board Horizontal Shiplap Details

Roof - Wall Ridge - Section Detail



21/08/2023 10:56:34 am

150mm
100
50
0 10mm



- Cladding face fixed with Simpson Strong-Tie pre-bore screw SSDTH3S 7G x 75mm trim head exterior timber stainless screw
- 16 mm Magnum board horizontal shiplap cladding
- Thermakraft Premium Joining tape dressed over top edge of apron flashing
- Cavity closer allow 15mm drip edge to bottom of cladding
- Prefinish metal apron flashing. 75mm Cover behind cladding. 35mm min. clearance between cladding and flashing. Refer to E2/AS1 Table 7 for cover over roofing
- 5mm max. Gap between flashing and roofing
- Roof structure in accordance with NZS3504:2011 or specific engineer design
- 9mm Magnum board® soffit lining
- Selected HBB Earthen® soffit moulding
- H3.2 pine 40x40mm vertical structural cavity battens @ stud crs. Nail fixed @ 600crs. Refer schedule below
- 9mm Magnum Board® rigid air barrier
- H1.2 LVL studs @ 600crs
- 9mm MAGNUM board® wall lining, paint finish

Canopy Junction - Section Detail
1 : 5

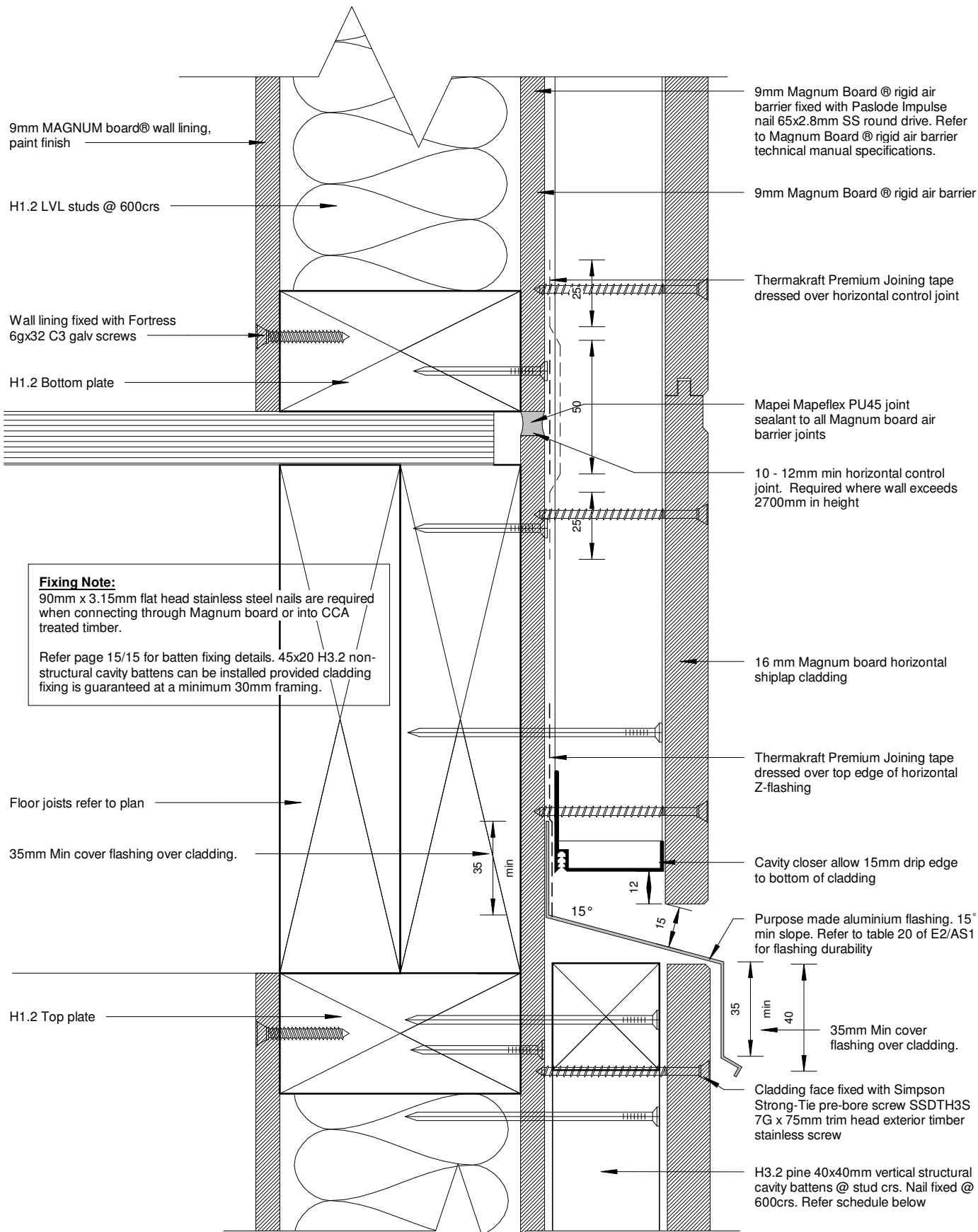
Fixing Note:
90mm x 3.15mm flat head stainless steel nails are required when connecting through Magnum board or into CCA treated timber.

Refer page 15/15 for batten fixing details. 45x20 H3.2 non-structural cavity battens can be installed provided cladding fixing is guaranteed at a minimum 30mm framing.

21/08/2023 10:56:34 am



150mm
100
50
10mm
0



Horizontal Control Joint

1 : 2

Fixing Note:
90mm x 3.15mm flat head stainless steel nails are required when connecting through Magnum board or into CCA treated timber.

Refer page 15/15 for batten fixing details. 45x20 H3.2 non-structural cavity battens can be installed provided cladding fixing is guaranteed at a minimum 30mm framing.

- 9mm Magnum Board® rigid air barrier fixed with Paslode Impulse nail 65x2.8mm SS round drive. Refer to Magnum Board® rigid air barrier technical manual specifications.
- 9mm Magnum Board® rigid air barrier
- Thermakraft Premium Joining tape dressed over horizontal control joint
- Mapei Mapeflex PU45 joint sealant to all Magnum board air barrier joints
- 10 - 12mm min horizontal control joint. Required where wall exceeds 2700mm in height
- 16 mm Magnum board horizontal shiplap cladding
- Thermakraft Premium Joining tape dressed over top edge of horizontal Z-flashing
- Cavity closer allow 15mm drip edge to bottom of cladding
- Purpose made aluminium flashing. 15° min slope. Refer to table 20 of E2/AS1 for flashing durability
- 35mm Min cover flashing over cladding.
- Cladding face fixed with Simpson Strong-Tie pre-bore screw SSDTH3S 7G x 75mm trim head exterior timber stainless screw
- H3.2 pine 40x40mm vertical structural cavity battens @ stud crs. Nail fixed @ 600crs. Refer schedule below

21/08/2023 10:56:34 am



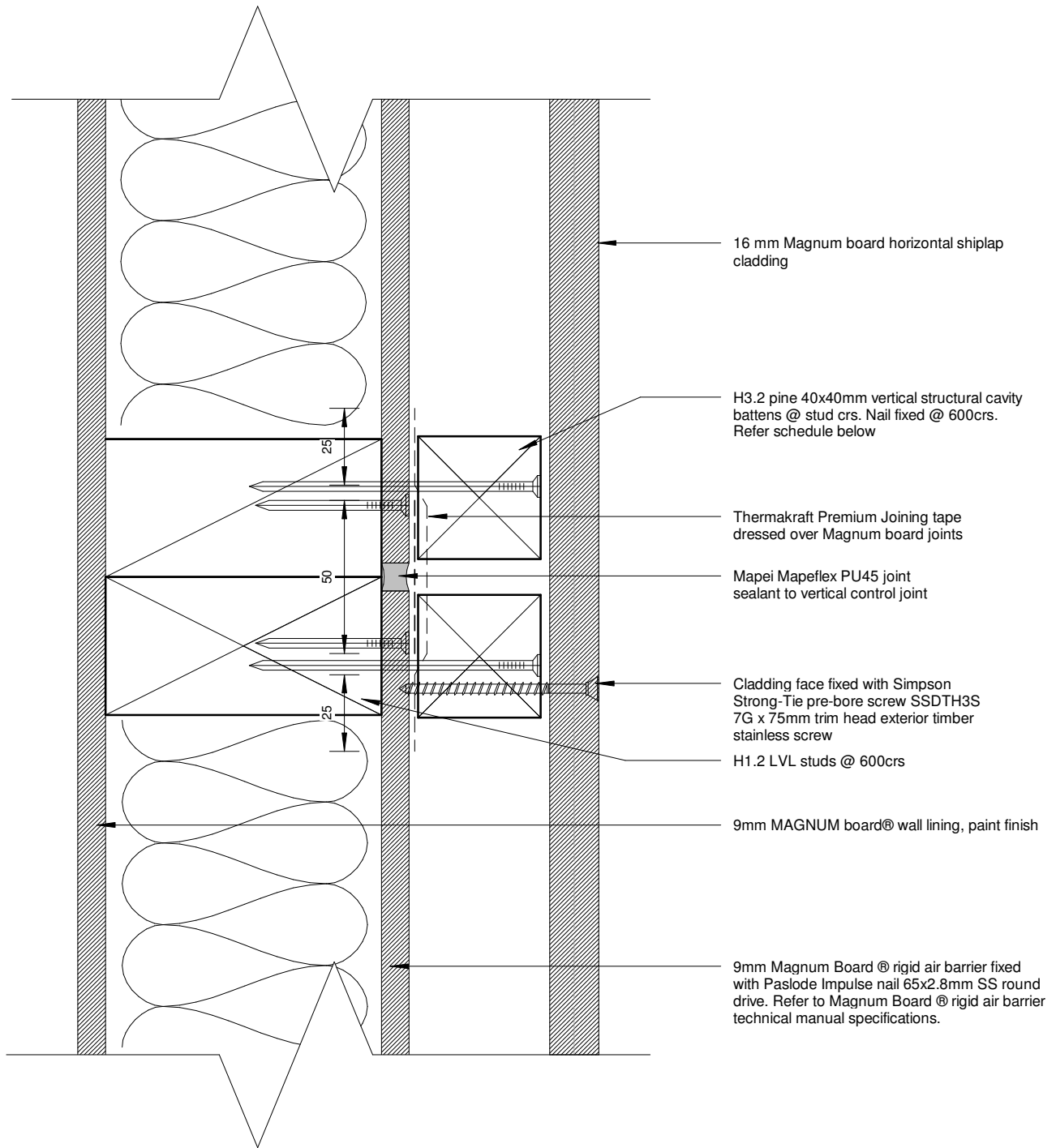
150mm

100

50

10mm

0



16 mm Magnum board horizontal shiplap cladding

H3.2 pine 40x40mm vertical structural cavity battens @ stud crs. Nail fixed @ 600crs. Refer schedule below

Thermakraft Premium Joining tape dressed over Magnum board joints

Mapei Mapeflex PU45 joint sealant to vertical control joint

Cladding face fixed with Simpson Strong-Tie pre-bore screw SSDTH3S 7G x 75mm trim head exterior timber stainless steel screw

H1.2 LVL studs @ 600crs

9mm MAGNUM board® wall lining, paint finish

9mm Magnum Board ® rigid air barrier fixed with Paslode Impulse nail 65x2.8mm SS round drive. Refer to Magnum Board ® rigid air barrier technical manual specifications.

Vertical Control Joint

1 : 2

Fixing Note:

90mm x 3.15mm flat head stainless steel nails are required when connecting through Magnum board or into CCA treated timber.

Refer page 15/15 for batten fixing details. 45x20 H3.2 non-structural cavity battens can be installed provided cladding fixing is guaranteed at a minimum 30mm framing.

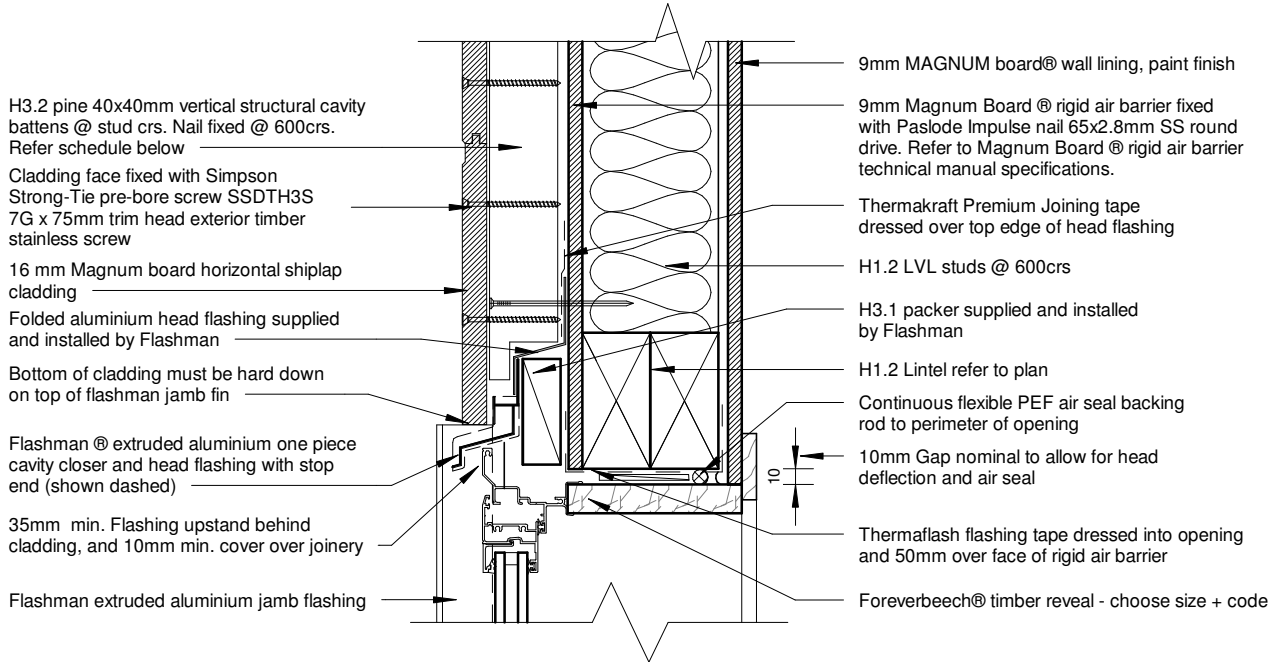
10/15

Magnum Board Horizontal Shiplap Details

Vertical Control Joint



21/08/2023 10:56:35 am

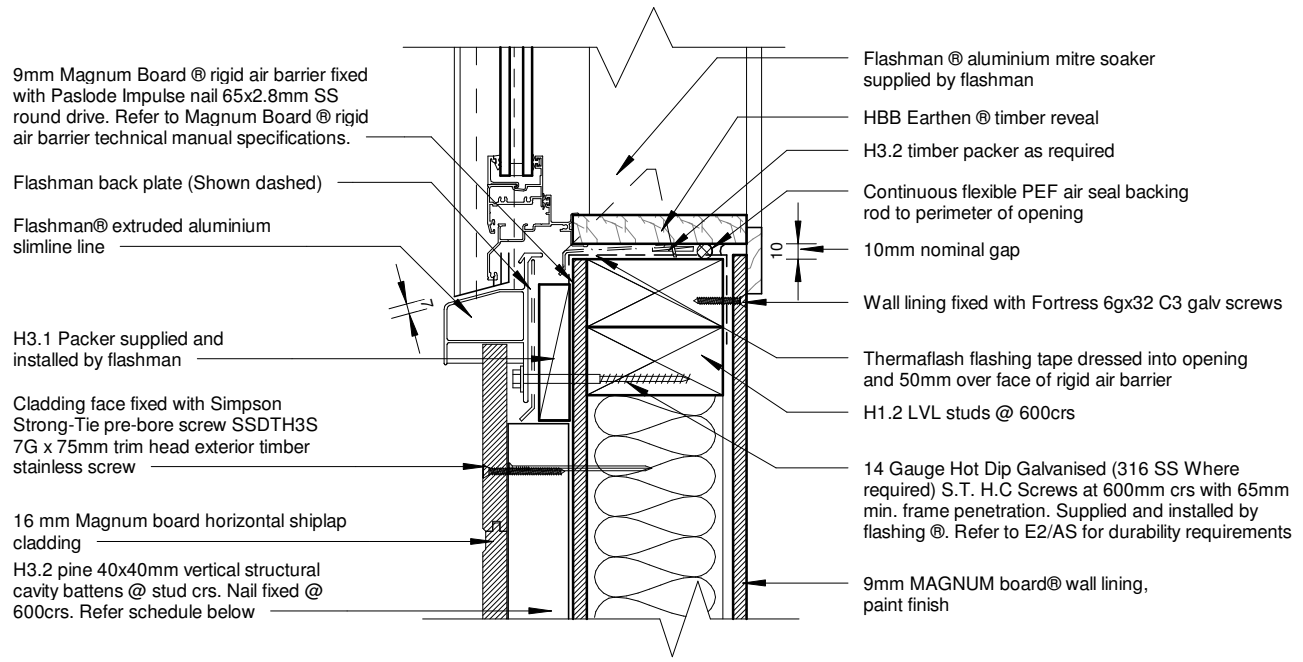


Typical Head Detail

1 : 5

Fixing Note:
 90mm x 3.15mm flat head stainless steel nails are required when connecting through Magnum board or into CCA treated timber.
 Refer page 15/15 for batten fixing details. 45x20 H3.2 non-structural cavity battens can be installed provided cladding fixing is guaranteed at a minimum 30mm framing.

150mm
100
50
10mm
0

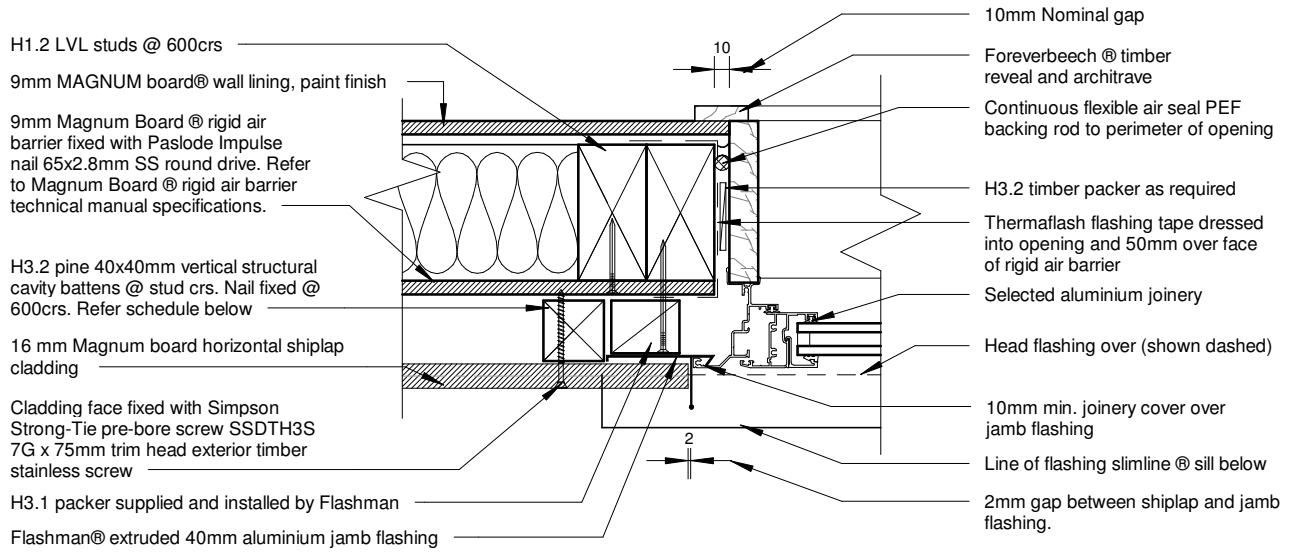


Typical Sill Detail

1 : 5



150mm
100
50
0 10mm



Typical Jamb Detail
1 : 5

DO NOT FIX THROUGH JAMB FLASHING

Fixing Note:
90mm x 3.15mm flat head stainless steel nails are required when connecting through Magnum board or into CCA treated timber.

Refer page 15/15 for batten fixing details. 45x20 H3.2 non-structural cavity battens can be installed provided cladding fixing is guaranteed at a minimum 30mm framing.

21/08/2023 10:56:35 am



12/15
Magnum Board Horizontal Shi lap Details
Typical Jamb Detail



150mm
100
50
0 10mm

Thermaflash flashing tape dressed into opening and 50mm over face of rigid air barrier

18mm Magnum Board® flooring

Continuous PEF backing rod to perimeter of opening

H1.2 LVL timber joist, refer to drawings

12mm gap between stringer and cladding/joinery

Decking as per drawings, joist sizes and fixings in accordance with NZS3604:2011

Deck stringer and fixings in accordance with NZS3604:2011 or specific engineering design

9mm Magnum Board® rigid air barrier fixed with Paslode Impulse nail 65x2.8mm SS round drive. Refer to Magnum Board® rigid air barrier technical manual specifications.

H3.2 pine 40x40mm vertical structural cavity battens @ stud crs. Nail fixed @ 600crs. Refer schedule below

Cavity closer allow 15mm drip edge to bottom of cladding

Cladding face fixed with Simpson Strong-Tie pre-bore screw SSDTH3S 7G x 75mm trim head exterior timber stainless screw

16 mm Magnum board horizontal shiplap cladding

Fixing Note:

90mm x 3.15mm flat head stainless steel nails are required when connecting through Magnum board or into CCA treated timber.

Refer page 15/15 for batten fixing details. 45x20 H3.2 non-structural cavity battens can be installed provided cladding fixing is guaranteed at a minimum 30mm framing.

Deck Threshold Detail

1 : 2



16 mm Magnum board horizontal shiplap cladding

Cladding face fixed with Simpson Strong-Tie pre-bore screw SSDTH3S 7G x 75mm trim head exterior timber stainless screw

Vanluk rubber boot with adhesive collar. refer to www.vanluk.co.nz

uPVC flange plate with Mapeflex to top half of flange

Mapeflex PU45 continuous around pipe to cladding joint

Pipe penetration sloping to outside

MS sealant continuous around pipe to cladding joint

H3.2 pine 40x40mm vertical structural cavity battens @ stud crs. Screw fixed @ 600crs. Refer schedule below

9mm Magnum Board @ rigid air barrier fixed with Paslode Impulse nail 65x2.8mm SS round drive. Refer to Magnum Board @ rigid air barrier technical manual specifications.

Butynol flashing over rubber boot as per vanluk installation instruction

H1.2 LVL studs @ 600crs

Solid blocking around penetration with minimum 75mm overlap to RAB

9mm Magnum Board@ wall lining, Foreverbreathe paint finish

Wall lining fixed with Fortress 6x32 C3 galv screws

Pipe Penetration Section Detail

1 : 5

Fixing Note:

90mm x 3.15mm flat head stainless steel nails are required when connecting through Magnum board or into CCA treated timber.

Refer page 15/15 for batten fixing details. 45x20 H3.2 non-structural cavity battens can be installed provided cladding fixing is guaranteed at a minimum 30mm framing.

Rigid air barrier fixed with Paslode Impulse nail 65x2.8mm SS round drive. Refer to Magnum Board @ rigid air barrier technical manual specifications.

9mm Magnum Board@ wall lining, Foreverbreathe paint finish

16 mm Magnum board horizontal shiplap cladding

Mapeflex PU45 continuous around pipe to cladding joint

uPVC flange plate with Mapeflex to top half of flange

Support pipe with a nog under and screw fixed strap over

H1.2 LVL studs @ 600crs

Butyl flashing over rubber boot per vanluk installation instruction

Vanluk rubber boot with adhesive collar. Refer to www.vanluk.co.nz

H3.2 pine 40x40mm vertical structural cavity battens @ stud crs. Nail fixed @ 600crs. Refer schedule below

Cladding face fixed with Simpson Strong-Tie pre-bore screw SSDTH3S 7G x 75mm trim head exterior timber stainless screw

Pipe Penetration Plan Detail

1 : 5

14/15

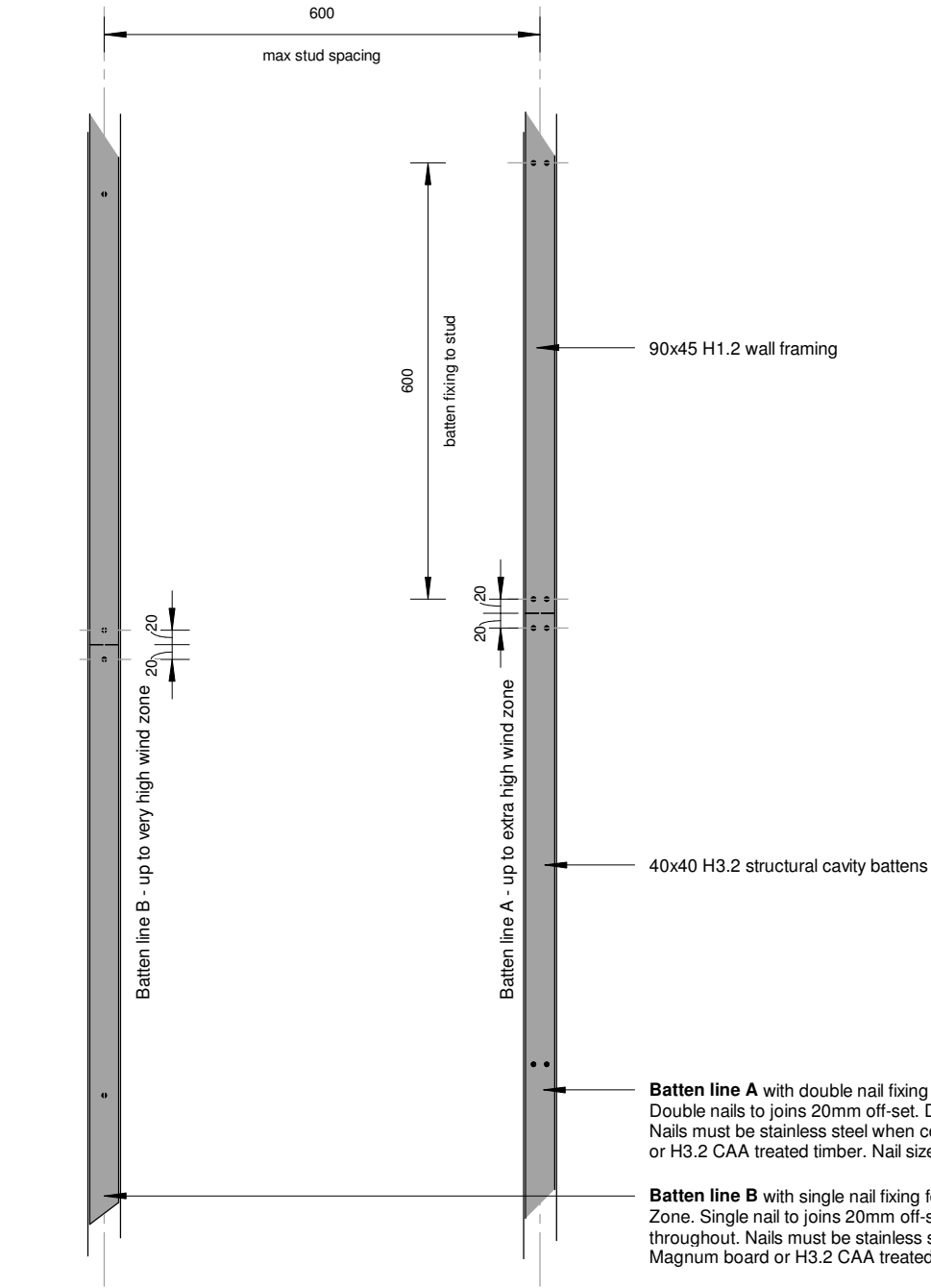
Magnum Board Horizontal Shiplap Details

Pipe Penetration - Plan & Section Detail



21/08/2023 10:56:36 am

150mm
100
50
0 10mm



Batten Fixing

1 : 10

21/08/2023 10:56:36 am



15/15

Magnum Board Horizontal Shiplap Details

Batten Fixing

