

MB16210TG Magnum Board Vertical Shiplap Details

DRAWING LIST

000	Cover Sheet
1/15	Concrete Foundation Detail
2/15	Timber Foundation Detail
3/15	External Corner Detail
4/15	Internal Corner Detail
5/15	Eave - Section Detail
6/15	Barge Eave - Section Details
7/15	Roof - Wall Ridge - Section Detail
8/15	Canopy Junction - Section Detail
9/15	Horizontal Control Joint
10/15	Plan Detail - Vertical Control Joint
11/15	Typical Head and Sill Detail
12/15	Typical Jamb - Plan Detail
13/15	Deck Threshold Detail
14/15	Pipe Penetration - Plan & Section Detail
15/15	Batten Fixing

150mm
100
50
0 10mm

21/08/2023 10:46:43 am



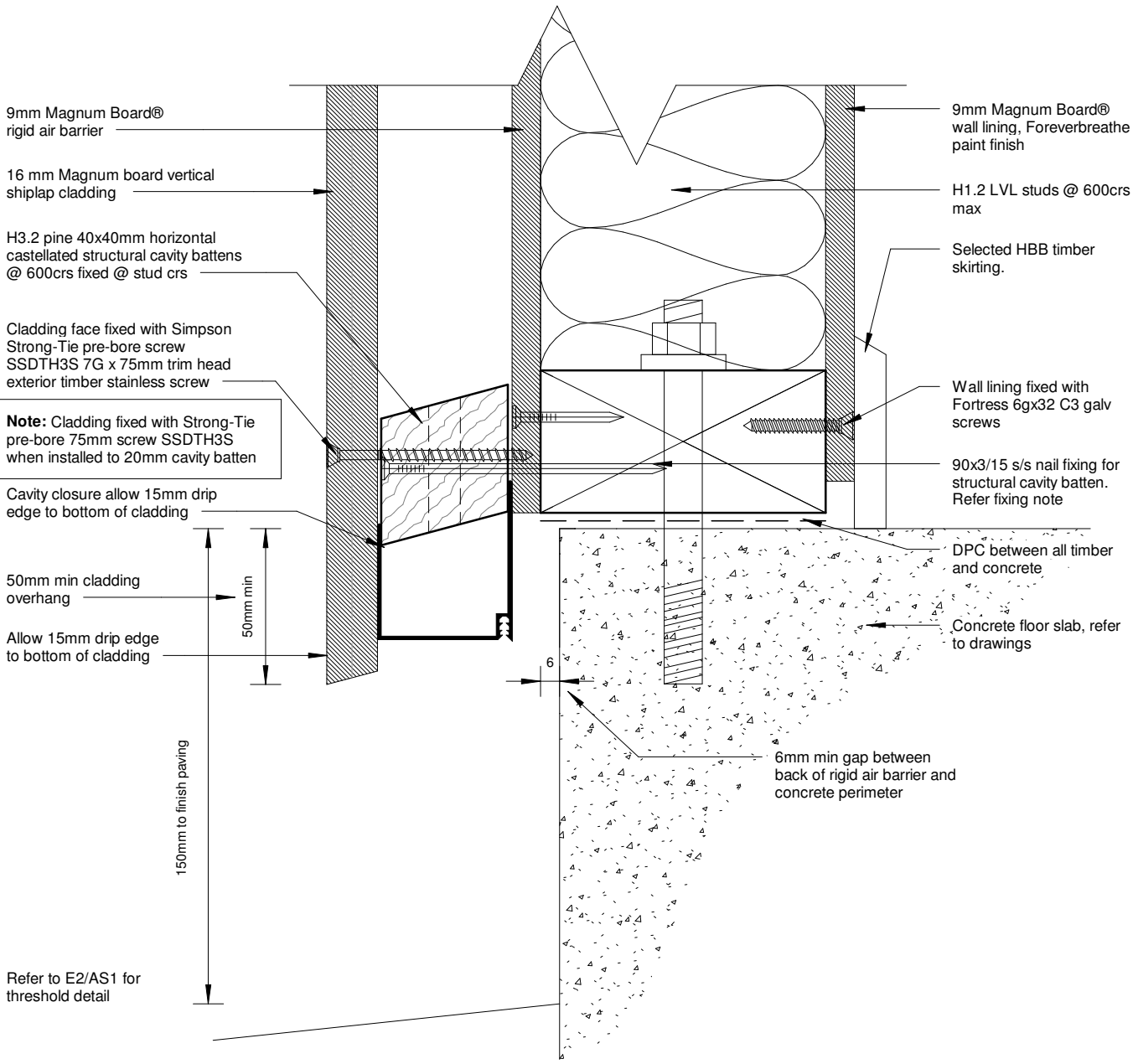
000

Magnum Board Vertical Shiplap Details

Cover Sheet



150mm
100
50
10mm
0



Note: Cladding fixed with Strong-Tie pre-bore 75mm screw SSDTH3S when installed to 20mm cavity batten

Fixing Note:
90mm x 3.15mm flat head stainless steel nails are required when connecting through Magnum board or into CCA treated timber.

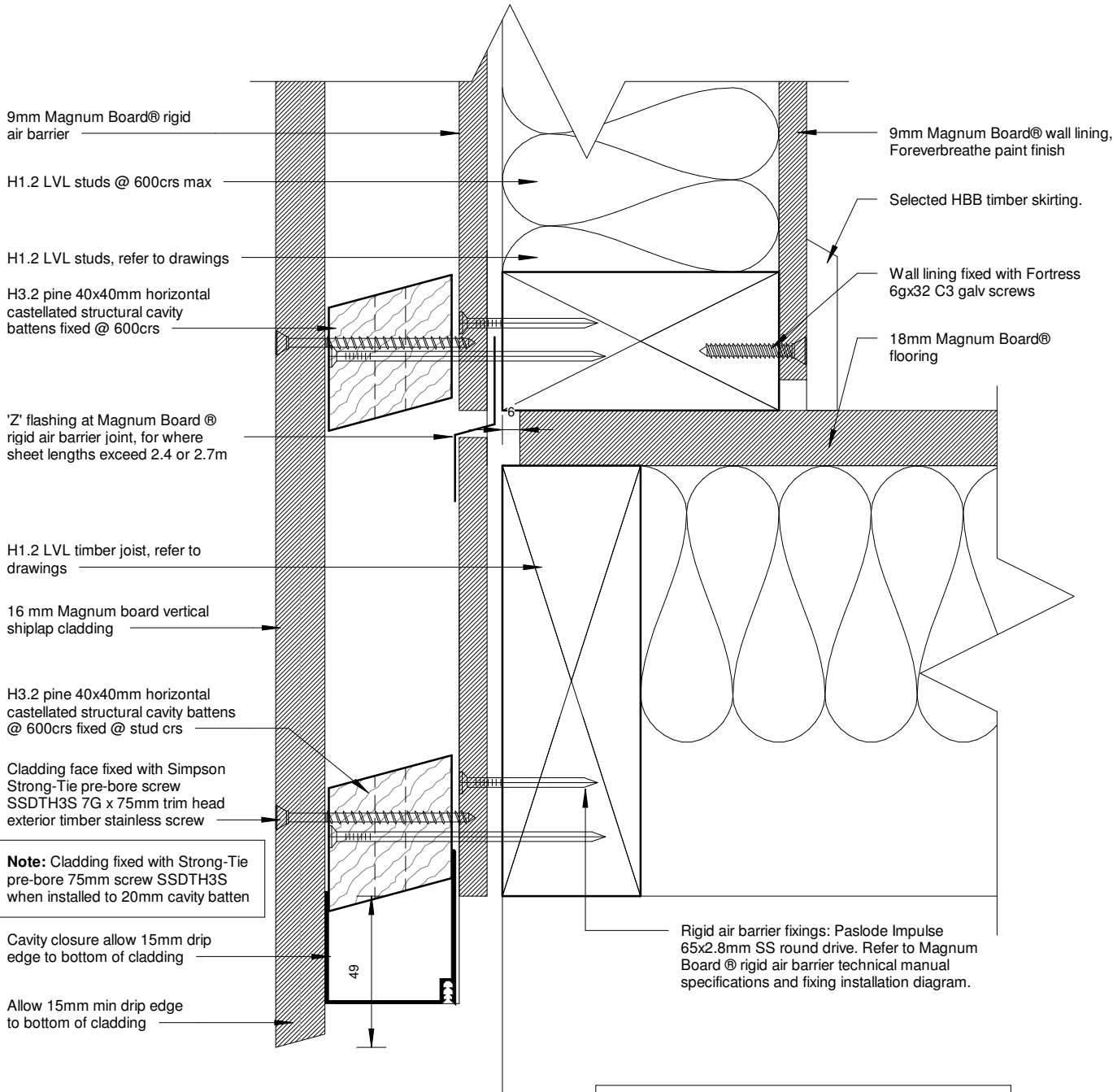
Refer page 15/15 for batten fixing details. 45x20 H3.2 non-structural cavity battens can be installed provided cladding fixing is guaranteed at a minimum 30mm framing.

Concrete Foundation Detail
1 : 2

21/08/2023 10:46:43 am



150mm
100
50
0 10mm



Timber Foundation Detail

1 : 2

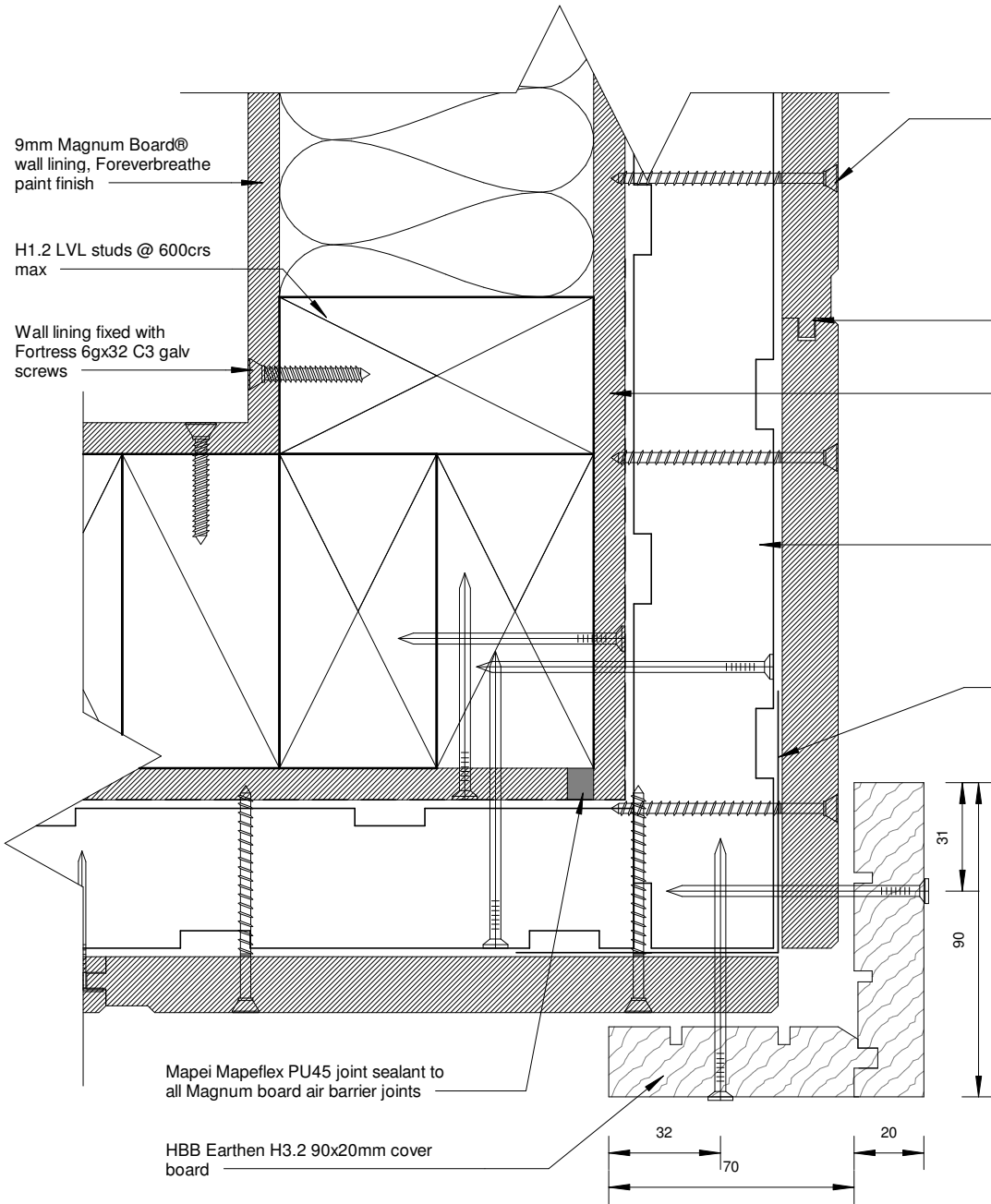
Fixing Note:
90mm x 3.15mm flat head stainless steel nails are required when connecting through Magnum board or into CCA treated timber.

Refer page 15/15 for batten fixing details. 45x20 H3.2 non-structural cavity battens can be installed provided cladding fixing is guaranteed at a minimum 30mm framing.

21/08/2023 10:46:43 am



150mm
100
50
0 10mm



Cladding face fixed with Simpson Strong-Tie pre-bore screw SSDTH3S 7G x 75mm trim head exterior timber stainless screw

Note: Cladding fixed with Strong-Tie pre-bore 75mm screw SSDTH3S when installed to 20mm cavity batten

16 mm Magnum board vertical shiplap cladding

9mm Magnum Board rigid air barrier fixed with Paslode Impulse 65x2.8mm SS round drive. Refer to Magnum Board rigid air barrier technical manual specifications.

H3.2 pine 40x40mm horizontal castellated structural cavity battens @ 600crs fixed @ stud crs

75x75 uPVC external corner back flashing

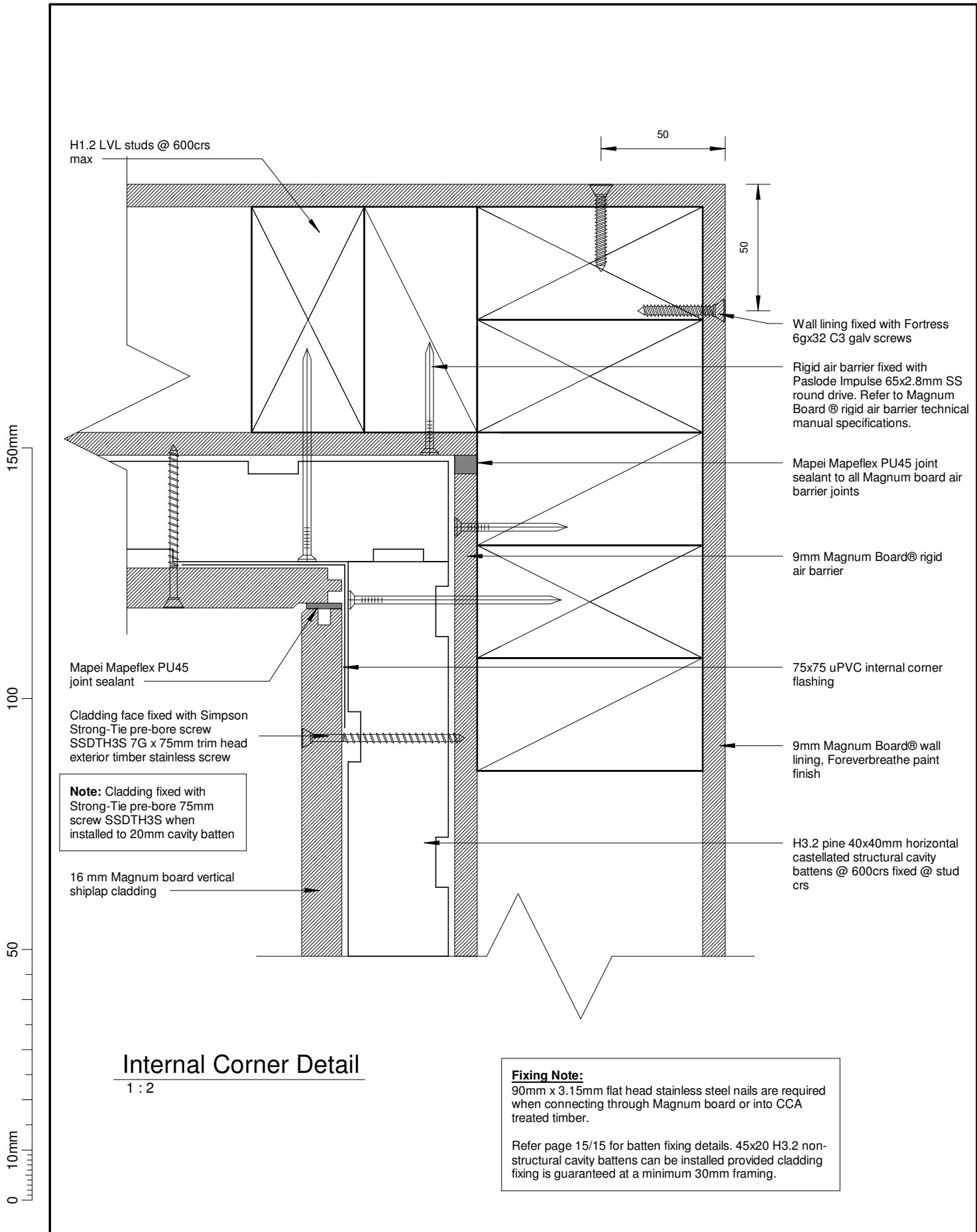
External Corner Detail
1 : 2

Fixing Note:
90mm x 3.15mm flat head stainless steel nails are required when connecting through Magnum board or into CCA treated timber.

Refer page 15/15 for batten fixing details. 45x20 H3.2 non-structural cavity battens can be installed provided cladding fixing is guaranteed at a minimum 30mm framing.

21/09/2023 10:46:44 am





21/08/2023 10:46:44 am



150mm
100
50
0 10mm

Selected profiled metal roofing
on roofing underlay

Ensure roofing underlay is laid
horizontally and over top of eaves
flashing. Ensure roof fixing does
not penetrate eave flashing

Folded 0.55BMT Prefinished
metal eaves flashing with hem
at top edge

Selected spouting

Provide solid blocking for fixing

Hardie and Thompson. Earthen®
fascia board

9mm Magnum Board® soffit
lining, flush stopped, paint finish

HBB Earthen® soffit moulding

Cladding face fixed with Simpson Strong-Tie pre-bore
screw SSDTH3S 7G x 75mm trim head exterior timber
stainless screw

Note: Cladding fixed with Strong-Tie pre-bore 75mm
screw SSDTH3S when installed to 20mm cavity batten

H3.2 pine 40x40mm horizontal castellated structural
cavity battens @ 600crs fixed @ stud crs

16 mm Magnum board vertical shiplap
cladding

9mm Magnum Board® rigid air barrier fixed
with Paslode Impulse 65x2.8mm SS round
drive. Refer to Magnum Board® rigid air
barrier technical manual specifications.

50
125mm min.-Refer E@/AS1 Fig. 45

Roof structure in
accordance with
NZS3604 or specific
Engineering design

Wall lining fixed with
Fortress 6gx32 C3 galv
screws

9mm MAGNUM board®
wall and ceiling lining,
paint finish

H1.2 LVL studs @ 600crs

Eave - Section Detail

1 : 5

Fixing Note:

90mm x 3.15mm flat head stainless steel nails are required
when connecting through Magnum board or into CCA
treated timber.

Refer page 15/15 for batten fixing details. 45x20 H3.2 non-
structural cavity battens can be installed provided cladding
fixing is guaranteed at a minimum 30mm framing.

21/08/2023 10:46:44 am



5/15

Magnum Board Vertical Shiplap Details

Eave - Section Detail



150mm

100

50

10mm

0

0.55BMT metal barge flashing to match roofing with two crests (Min.) cover to roofings

HBB Earthen® fascia board

Roof structure as per NZS3604 2011 or specific engineering design

9mm Magnum Board® soffit lining, flush stopped, paint finish

HBB® soffit moulding

Cladding face fixed with Simpson Strong-Tie pre-bore screw SSDTH3S 7G x 75mm trim head exterior timber stainless screw

Note: Cladding fixed with Strong-Tie pre-bore 75mm screw SSDTH3S when installed to 20mm cavity batten

H3.2 pine 40x40mm horizontal castellated structural cavity battens @ 600crs fixed @ stud crs

16 mm Magnum board vertical shi lap cladding

9mm Magnum Board® rigid air barrier fixed with Paslode Impulse 65x2.8mm SS round drive. Refer to Magnum Board® rigid air barrier technical manual specifications.

Y-Refer table 7 E2/AS1

Z - Refer Table 7

Selected profile metal roofing on roofing underlay

Wall lining fixed with Fortress 6gx32 C3 galv screws

9mm MAGNUM board® wall and ceiling lining, paint finish

H1.2 LVL studs @ 600crs

Barge Eave - Section Detail

1 : 5

Fixing Note:

90mm x 3.15mm flat head stainless steel nails are required when connecting through Magnum board or into CCA treated timber.

Refer page 15/15 for batten fixing details. 45x20 H3.2 non-structural cavity battens can be installed provided cladding fixing is guaranteed at a minimum 30mm framing.

21/08/2023 10:46:44 am



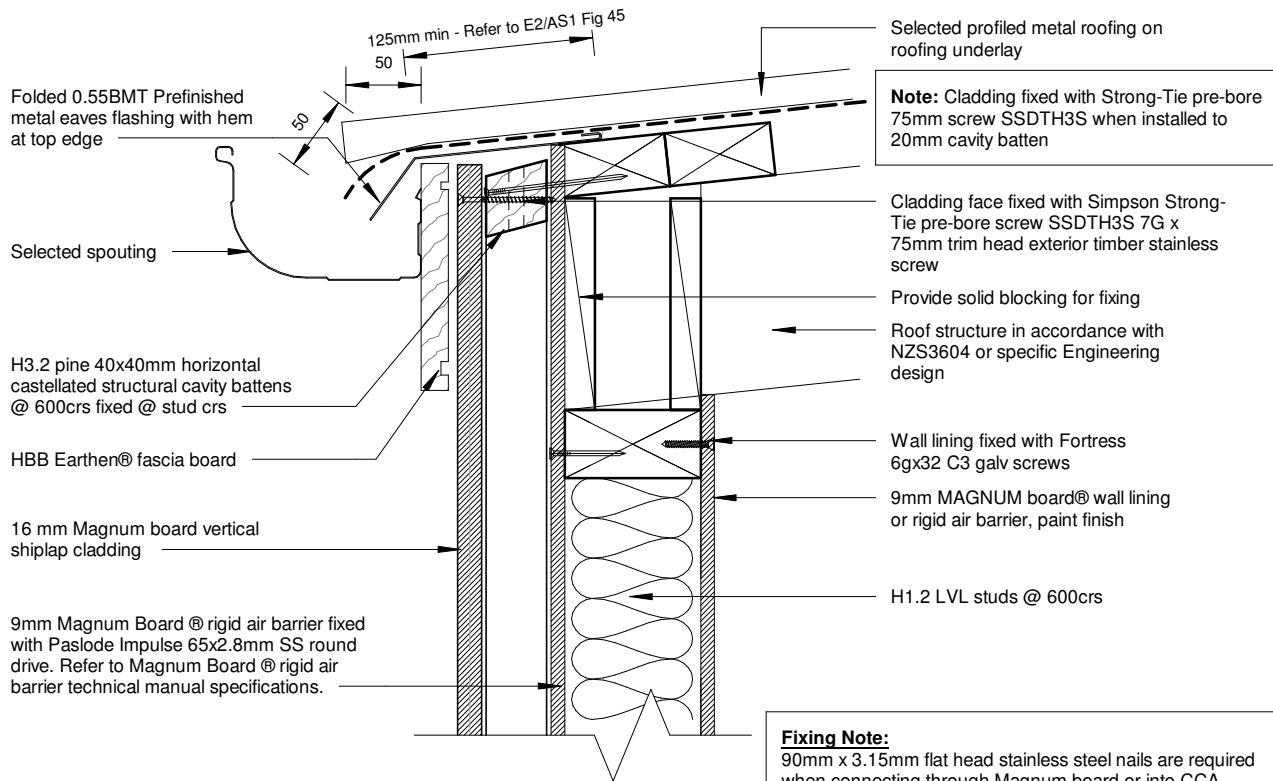
6/15

Magnum Board Vertical Shi lap Details

Barge Eave - Section Details



150mm



Barge - No Soffit - Section Detail

1 : 5

Fixing Note:
90mm x 3.15mm flat head stainless steel nails are required when connecting through Magnum board or into CCA treated timber.

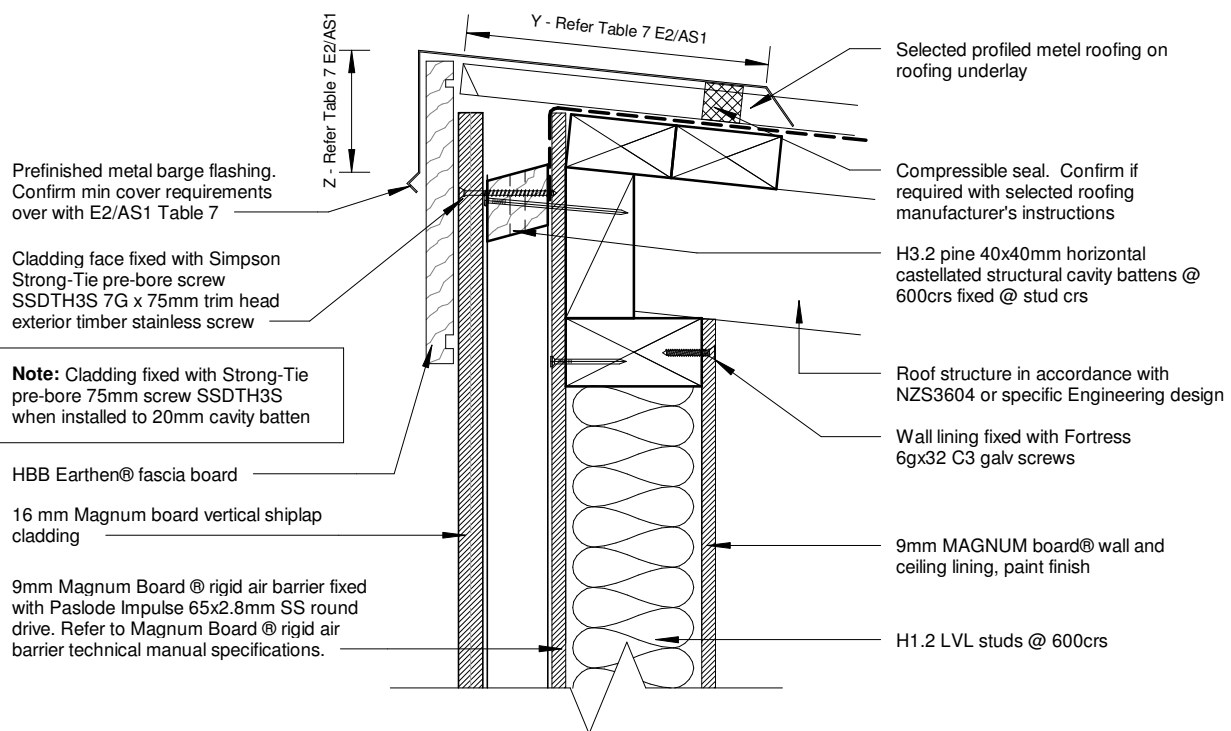
Refer page 15/15 for batten fixing details. 45x20 H3.2 non-structural cavity battens can be installed provided cladding fixing is guaranteed at a minimum 30mm framing.

100

50

10mm

0



Roof - Wall ridge - Section Detail

1 : 5

7/15

Magnum Board Vertical Shiplap Details

Roof - Wall Ridge - Section Detail



21/08/2023 10:46:45 am

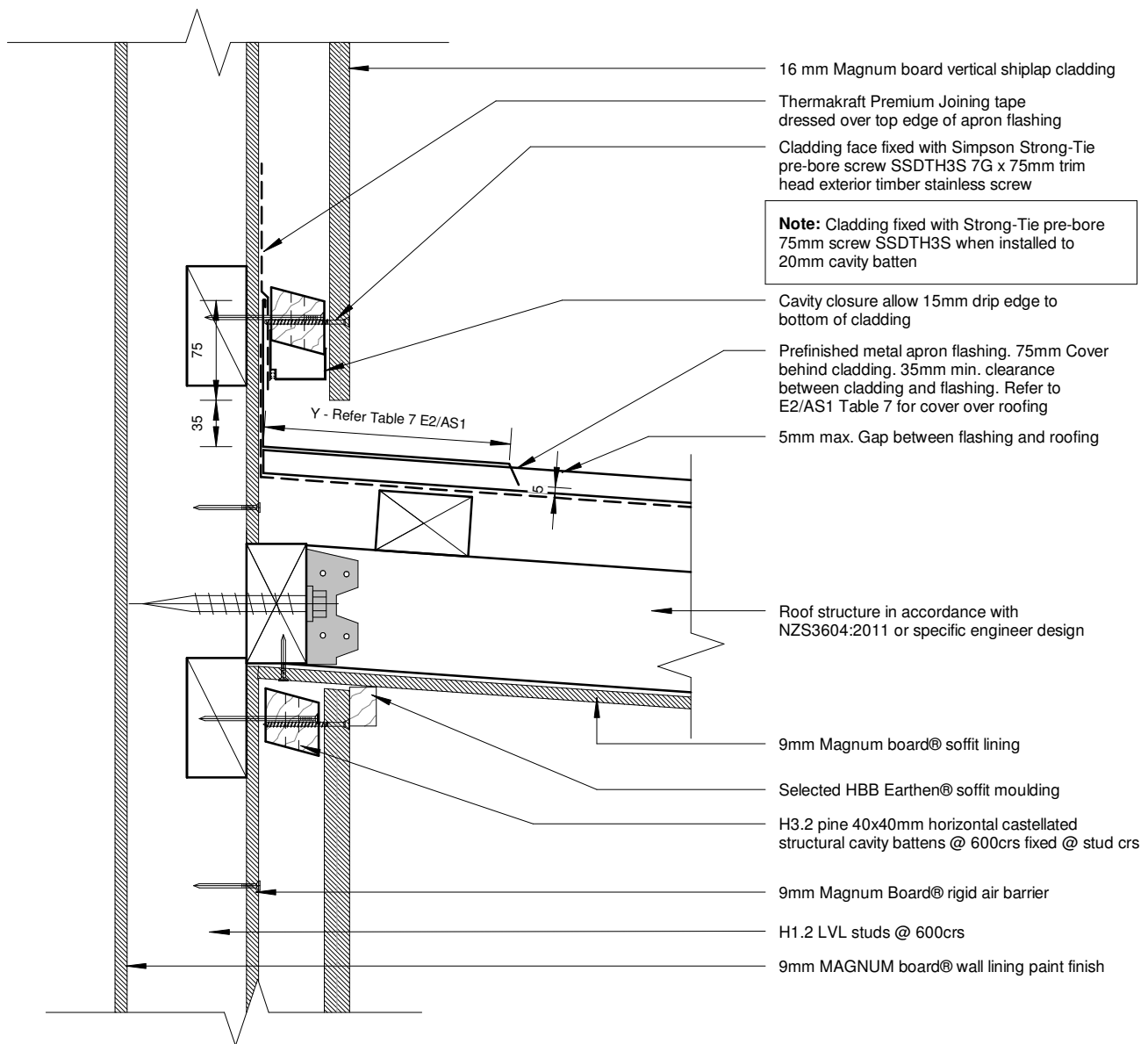
150mm

100

50

10mm

21/08/2023 10:46:45 am



Canopy Junction - Section Detail

1 : 5

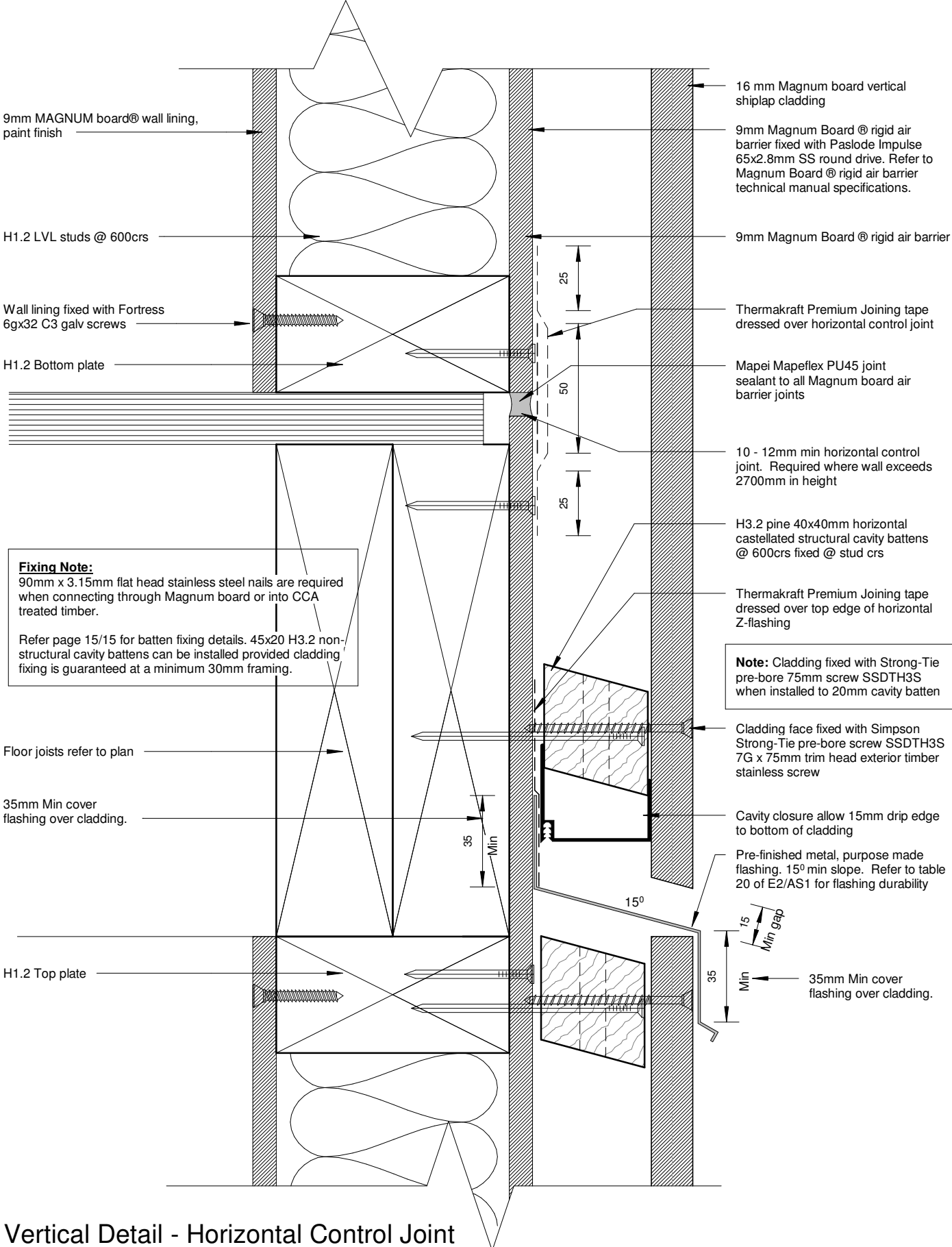
Fixing Note:

90mm x 3.15mm flat head stainless steel nails are required when connecting through Magnum board or into CCA treated timber.

Refer page 15/15 for batten fixing details. 45x20 H3.2 non-structural cavity battens can be installed provided cladding fixing is guaranteed at a minimum 30mm framing.



150mm
100
50
0 10mm



9mm MAGNUM board® wall lining, paint finish

H1.2 LVL studs @ 600crs

Wall lining fixed with Fortress 6gx32 C3 galv screws

H1.2 Bottom plate

Floor joists refer to plan

35mm Min cover flashing over cladding.

H1.2 Top plate

Vertical Detail - Horizontal Control Joint

1 : 2

Fixing Note:
90mm x 3.15mm flat head stainless steel nails are required when connecting through Magnum board or into CCA treated timber.

Refer page 15/15 for batten fixing details. 45x20 H3.2 non-structural cavity battens can be installed provided cladding fixing is guaranteed at a minimum 30mm framing.

16 mm Magnum board vertical shiplap cladding

9mm Magnum Board ® rigid air barrier fixed with Paslode Impulse 65x2.8mm SS round drive. Refer to Magnum Board ® rigid air barrier technical manual specifications.

9mm Magnum Board ® rigid air barrier

Thermakraft Premium Joining tape dressed over horizontal control joint

Mapei Mapeflex PU45 joint sealant to all Magnum board air barrier joints

10 - 12mm min horizontal control joint. Required where wall exceeds 2700mm in height

H3.2 pine 40x40mm horizontal castellated structural cavity battens @ 600crs fixed @ stud crs

Thermakraft Premium Joining tape dressed over top edge of horizontal Z-flashing

Note: Cladding fixed with Strong-Tie pre-bore 75mm screw SSDTH3S when installed to 20mm cavity batten

Cladding face fixed with Simpson Strong-Tie pre-bore screw SSDTH3S 7G x 75mm trim head exterior timber stainless screw

Cavity closure allow 15mm drip edge to bottom of cladding

Pre-finished metal, purpose made flashing. 15° min slope. Refer to table 20 of E2/AS1 for flashing durability

35mm Min cover flashing over cladding.

21/08/2023 10:46:45 am

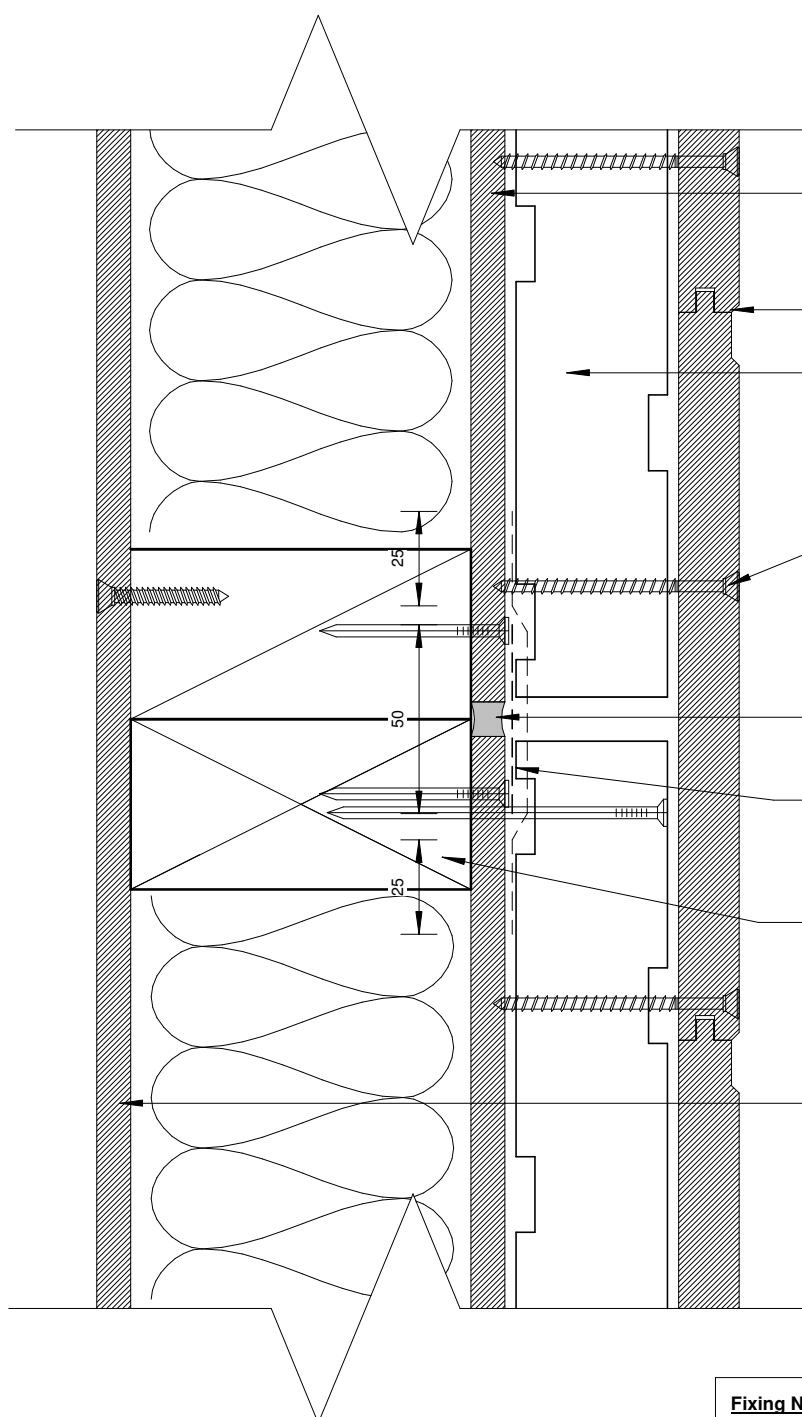


9/15

Magnum Board Vertical Shiplap Details
Horizontal Control Joint



150mm
100
50
0 10mm



9mm Magnum Board ® rigid air barrier fixed with Paslode Impulse 65x2.8mm SS round drive. Refer to Magnum Board ® rigid air barrier technical manual specifications.

16 mm Magnum board vertical shiplap cladding

H3.2 pine 40x40mm horizontal castellated structural cavity battens @ 600crs fixed @ stud crs

Note: Cladding fixed with Strong-Tie pre-bore 75mm screw SSDTH3S when installed to 20mm cavity batten

Cladding face fixed with Simpson Strong-Tie pre-bore screw SSDTH3S 7G x 75mm trim head exterior timber stainless screw

Mapei Mapeflex PU45 joint sealant to vertical control joint

Thermakraft Premium Joining tape dressed over Magnum board joints

H1.2 LVL studs @ 600crs

9mm MAGNUM board® wall lining, paint finish

Plan Detail - Vertical Control Joint
1 : 2

Fixing Note:
90mm x 3.15mm flat head stainless steel nails are required when connecting through Magnum board or into CCA treated timber.

Refer page 15/15 for batten fixing details. 45x20 H3.2 non-structural cavity battens can be installed provided cladding fixing is guaranteed at a minimum 30mm framing.

21/08/2023 10:46:45 am



9mm Magnum Board @ rigid air barrier fixed with Paslode Impulse nail 65x2.8mm SS round drive. Refer to Magnum Board @ rigid air barrier technical manual specifications.

16 mm Magnum board vertical shiplap cladding

H3.2 pine 40x40mm horizontal castellated structural cavity battens @ 600crs fixed @ stud crs

Cladding face fixed with Simpson Strong-Tie pre-bore screw SSDTH3S 7G x 75mm trim head exterior timber stainless screw

Note: Cladding fixed with Strong-Tie pre-bore 75mm screw SSDTH3S when installed to 20mm cavity batten

Folded aluminium head flashing supplied and installed by Flashman

Bottom of cladding must be hard down on top of flashman jamb fin

Flashman @ extruded aluminium one piece cavity closer and head flashing with stop end (shown dashed)

35mm min. Flashing upstand behind cladding, and 10mm min. cover over joinery

Flashman extruded aluminium jamb flashing

H1.2 LVL studs @ 600crs

H1.2 LVL studs, refer to drawings

9mm MAGNUM board@ wall lining, paint finish

Thermakraft Premium Joining tape dressed over top edge of head flashing

H3.1 packer supplied and installed by Flashman

H1.2 Lintel refer to plan

Thermaflash flashing tape dressed into opening and 50mm over face of rigid air barrier

Continuous PEF backing rod to perimeter of opening

H3.2 packing

Selected Foreverbeech@ timber reveal

Typical Head - Section Detail

1 : 5

Fixing Note:

90mm x 3.15mm flat head stainless steel nails are required when connecting through Magnum board or into CCA treated timber.

Refer page 15/15 for batten fixing details. 45x20 H3.2 non-structural cavity battens can be installed provided cladding fixing is guaranteed at a minimum 30mm framing.

9mm Magnum Board @ rigid air barrier fixed with Paslode Impulse 65x2.8mm SS round drive. Refer to Magnum Board @ rigid air barrier technical manual specifications.

Flashman@ extruded aluminium slimline line sill flashing

H3.1 Packer supplied and installed by flashman

Flashman back plate (Shown dashed)

Cladding face fixed with Simpson Strong-Tie pre-bore screw SSDTH3S 7G x 75mm trim head exterior timber stainless screw

Note: Cladding fixed with Strong-Tie pre-bore 75mm screw SSDTH3S when installed to 20mm cavity batten

H3.2 pine 40x40mm horizontal castellated structural cavity battens @ 600crs fixed @ stud crs

16 mm Magnum board vertical shiplap cladding

Flashman @ aluminium mitre soaker supplied by flashman

HBB Earthen @ timber reveal

Continuous PEF backing rod to perimeter of opening

H3.2 packer

Wall lining fixed with Fortress 6gx32 C3 galv screws

Thermaflash flashing tape dressed into opening and 50mm over face of rigid air barrier

H1.2 LVL studs @ 600crs

14 Gauge Hot Dip Galvanised (316 SS Where required) S.T. H.C Screws at 600mm crs with 65mm min. frame penetration. Supplied and installed by flashing @. Refer to E2/AS for durability requirements

9mm MAGNUM board@ wall lining, paint finish

Typical Sill - Section Detail

1 : 5

11/15

Magnum Board Vertical Shiplap Details

Typical Head and Sill Detail



21/08/2023 10:46:46 am

150mm

100

50

10mm

0

9mm MAGNUM board® wall lining, paint finish

H1.2 LVL studs @ 600crs

9mm Magnum Board® rigid air barrier fixed with Paslode Impulse nail 65x2.8mm SS round drive. Refer to Magnum Board® rigid air barrier technical manual specifications.

H3.2 pine 40x40mm horizontal castellated structural cavity battens @ 600crs fixed @ stud crs

16 mm Magnum board vertical shiplap cladding

Cladding face fixed with Simpson Strong-Tie pre-bore screw SSDTH3S 7G x 75mm trim head exterior timber stainless screw

Note: Cladding fixed with Strong-Tie pre-bore 75mm screw SSDTH3S when installed to 20mm cavity batten

Flashman® extruded 40mm aluminium jamb flashing

10

10

Foreverbeech® timber reveal and architrave

Continuous flexible air seal on PEF backing rod to perimeter of opening

Timber packer as required

Thermaflash flashing tape dressed into opening and 50mm over face of rigid air barrier

Selected double glazed aluminium joinery

H3.1 packer supplied and installed by Flashman

Head flashing over (Shown dashed)
10mm min. joinery cover over jamb flashing

Line of flashing slimline® sill below

2mm gap between shiplap and jamb flashing.

39

DO NOT FIX THROUGH JAMB FLASHING

Typical Jamb - Plan Detail

1 : 5

Fixing Note:
90mm x 3.15mm flat head stainless steel nails are required when connecting through Magnum board or into CCA treated timber.

Refer page 15/15 for batten fixing details. 45x20 H3.2 non-structural cavity battens can be installed provided cladding fixing is guaranteed at a minimum 30mm framing.

21/08/2023 10:46:46 am



12/15

Magnum Board Vertical Shiplap Details

Typical Jamb - Plan Detail



150mm
100
50
10mm
0

Thermaflash flashing tape dressed into opening and 50mm over face of rigid air barrier

18mm Magnum Board® flooring

Continuous PEF backing rod to perimeter of opening

H1.2 LVL timber joist, refer to drawings

12mm gap between stringer and cladding/joinery

Decking as per drawings, joist sizes and fixings in accordance with NZS3604:2011

Deck stringer and fixings in accordance with NZS3604:2011 or specific engineering design

9mm Magnum Board® rigid air barrier fixed with Paslode Impulse 65x2.8mm SS round drive. Refer to Magnum Board® rigid air barrier technical manual specifications.

H3.2 pine 40x40mm horizontal castellated structural cavity battens @ 600crs fixed @ stud crs

Cavity closure allow 15mm drip edge to bottom of cladding

Cladding face fixed with Simpson Strong-Tie pre-bore screw SSDTH3S 7G x 75mm trim head exterior timber stainless screw
16 mm Magnum board vertical shiplap cladding

Note: Cladding fixed with Strong-Tie pre-bore 75mm screw SSDTH3S when installed to 20mm cavity batten

Fixing Note:
90mm x 3.15mm flat head stainless steel nails are required when connecting through Magnum board or into CCA treated timber.

Refer page 15/15 for batten fixing details. 45x20 H3.2 non-structural cavity battens can be installed provided cladding fixing is guaranteed at a minimum 30mm framing.

Deck Threshold Detail

1 : 2

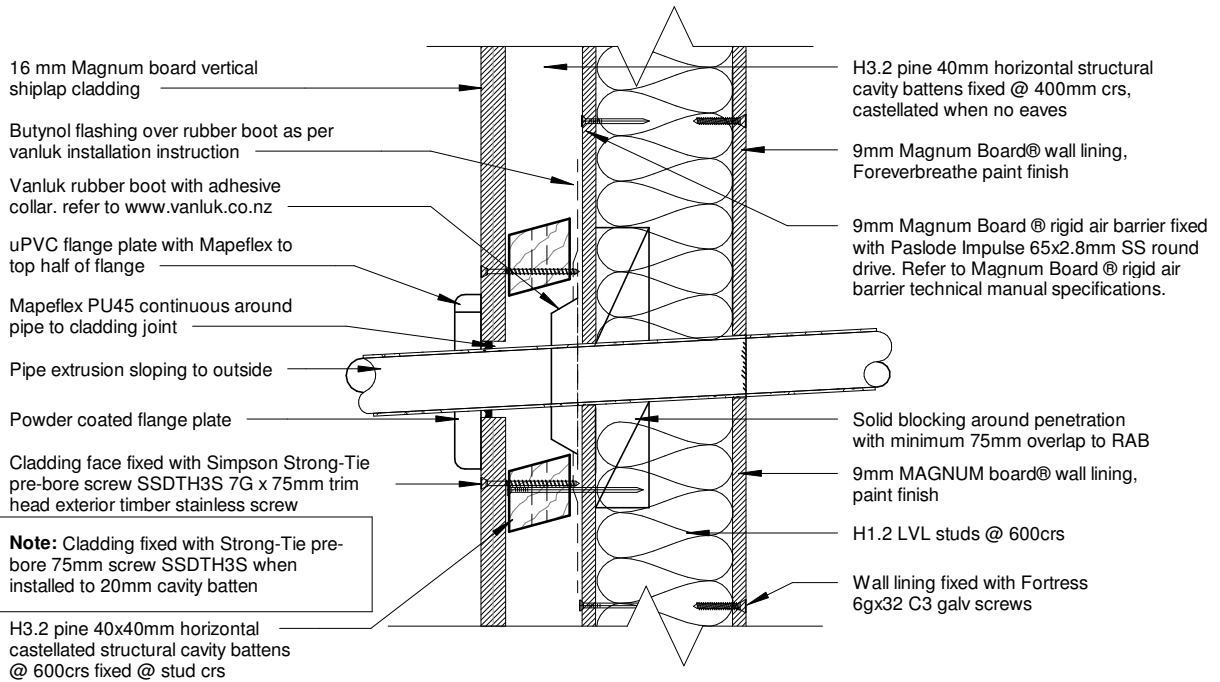
13/15

Magnum Board Vertical Shiplap Details

Deck Threshold Detail



21/08/2023 10:46:46 am



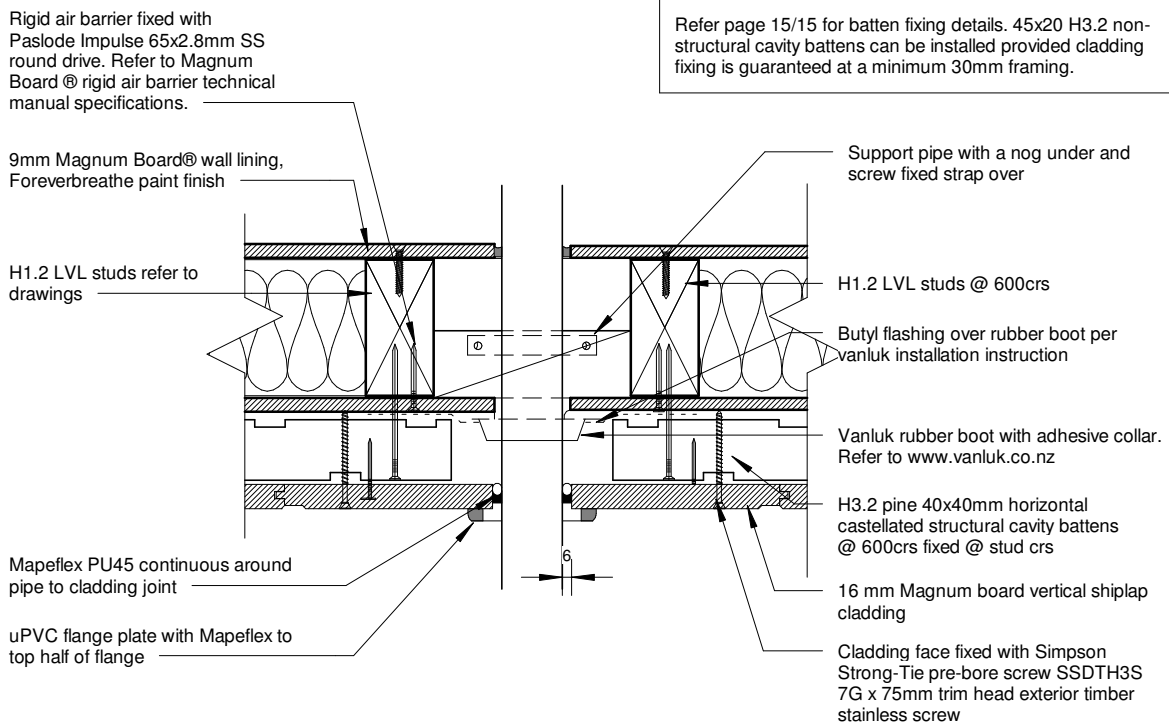
Pipe Penetration - Section Detail

1 : 5

Fixing Note:

90mm x 3.15mm flat head stainless steel nails are required when connecting through Magnum board or into CCA treated timber.

Refer page 15/15 for batten fixing details. 45x20 H3.2 non-structural cavity battens can be installed provided cladding fixing is guaranteed at a minimum 30mm framing.



Note: Cladding fixed with Strong-Tie pre-bore 75mm screw SSDTH3S when installed to 20mm cavity batten

Pipe Penetration - Plan Detail

1 : 5

150mm

100

50

10mm

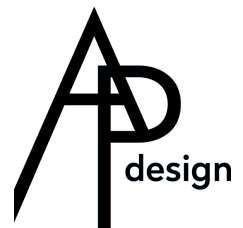
0

21/08/2023 10:46:46 am

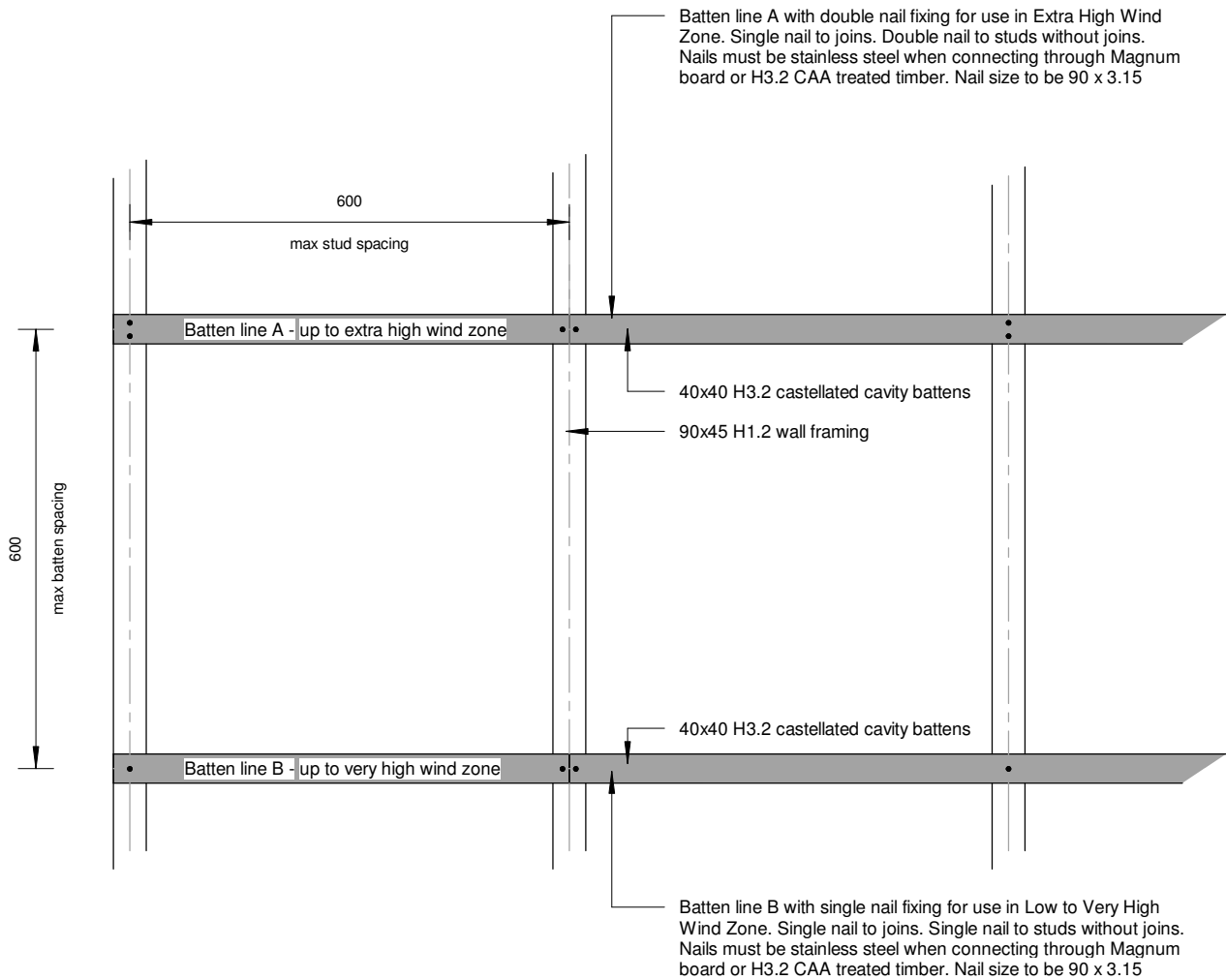


14/15

Magnum Board Vertical Shiplap Details
Pipe Penetration - Plan & Section Detail



150mm
600
max batten spacing
100
50
10mm
0



Batten Fixing
1 : 10

21/08/2023 10:46:46 am



15/15
Magnum Board Vertical Shiplap Details
Batten Fixing

