

MB16210TG Magnum Board Horizontal Shiplap Details

Sheet List	
Sheet Number	Sheet Name
000	Cover Sheet
1/14	Concrete Foundation Detail
2/14	Timber Foundation Detail
3/14	External Corner Detail
4/14	Internal Corner Detail
5/14	Eave - Section Detail
6/14	Barge - Section Detail
7/14	Roof - Wall Ridge - Section Detail
8/14	Canopy Junction - Section Detail
9/14	Horizontal Control Joint
10/14	Vertical Control Joint
11/14	Typical Head and Sill Detail
12/14	Typical Jamb Detail
13/14	Deck Threshold Detail
14/14	Pipe Penetration - Plan & Section Detail

150mm
100
50
0 10mm

29/01/2024 9:07:02 am



000

Magnum Board Horizontal Shiplap Details

Cover Sheet



150mm
100
50
0 10mm

Cladding face fixed with Simpson Strong-Tie pre-bore screw SSDTH3S 7G x 75mm trim head exterior timber stainless screw @ 600crs

Non-combustible Magnum Board® 16mm Shiplap Cladding

Flexible breathable wall underlay

50mm min cladding overhang

Refer to E2/AS1 for threshold detail

40

50 mm min.

150mm to finish paving

6

R2.2 75mm Rockwool insulation

9mm Magnum Board® silica free non-combustible wall & ceiling lining, Foreverbreathe paint finish

H1.2 LVL studs @ 600crs

Wall lining fixed with Fortress 6gx32 C3 galv screws

Selected HBB timber skirting.

Concrete floor slab, refer to drawings

DPC between all timber and concrete

6mm min gap between back of cladding and concrete perimeter

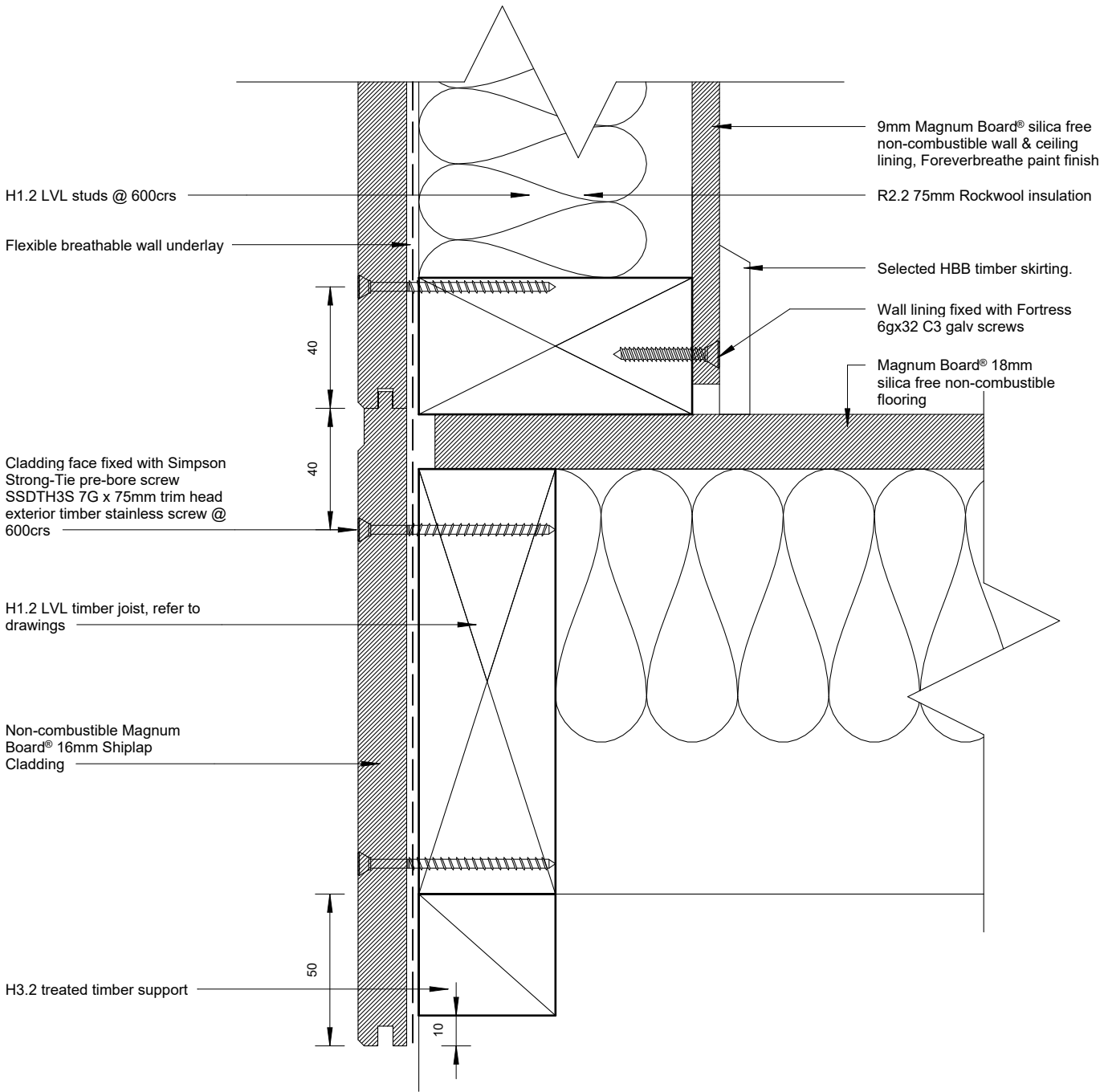
Concrete Foundation Detail

1 : 2

29/01/2024 9:07:02 am



150mm
100
50
0



Timber Foundation Detail

1 : 2

29/01/2024 9:07:02 am



150mm
100
50
0 10mm

9mm Magnum Board® silica free non-combustible wall & ceiling lining, Foreverbreathe paint finish

R2.2 75mm Rockwool insulation

Wall lining fixed with Fortress 6gx32 C3 galv screws

Non-combustible Magnum Board® 16mm Shiplap Cladding

Flexible breathable wall underlay

H1.2 LVL studs @ 600crs

Cladding face fixed with Simpson Strong-Tie pre-bore screw SSDTH3S 7G x 75mm trim head exterior timber stainless screw @ 600crs

HBB Earthen H3.2 90x20mm grooved external corner facing

HBB Earthen H3.2 70x20mm tongued external corner facing

External Corner Detail

1 : 2

29/01/2024 9:07:02 am



9mm Magnum Board® silica free non-combustible wall & ceiling lining, Foreverbreathe paint finish

H1.2 LVL studs @ 600crs

50

50

Wall lining fixed with Fortress 6gx32 C3 galv screws

Mapei Mapeflex PU45 joint sealant

50x50mm uPVC internal corner flashing

18x18mm min. corner batten with chamfered rear edge

Cladding face fixed with Simpson Strong-Tie pre-bore screw SSDTH3S 7G x 75mm trim head exterior timber stainless screw @ 600crs

Non-combustible Magnum Board® 16mm Shiplap Cladding

Flexible breathable wall underlay

R2.2 75mm Rockwool insulation

150mm

100

50

10mm

0

Internal Corner Detail

1:2

29/01/2024 9:07:02 am



4/14

Magnum Board Horizontal Shiplap Details

Internal Corner Detail



150mm
100
50
0 10mm

Selected profiled metal roofing on roofing underlay
 Ensure roofing underlay is laid horizontally and over top of eaves flashing. Ensure roof fixing does not penetrate eave flashing

50
 125mm min.-Refer E2/AS1 Fig. 45

Folded 0.55BMT Prefinished metal eaves flashing with hem at top edge

H1.2 ceiling battens, refer to drawings
 Roof structure to specific Engineering design

10 mm min. gap

Selected spouting
 Provide solid blocking for fixing
 Non-combustible Prefinished metal fascia
 Magnum Board® 9mm silica free non-combustible soffit lining
 HBB Earthen® soffit moulding

Cladding face fixed with Simpson Strong-Tie pre-bore screw SSDTH3S 7G x 75mm trim head exterior timber stainless screw @ 600crs
 Flexible breathable wall underlay
 Non-combustible Magnum Board® 16mm Shiplap Cladding

40
 40

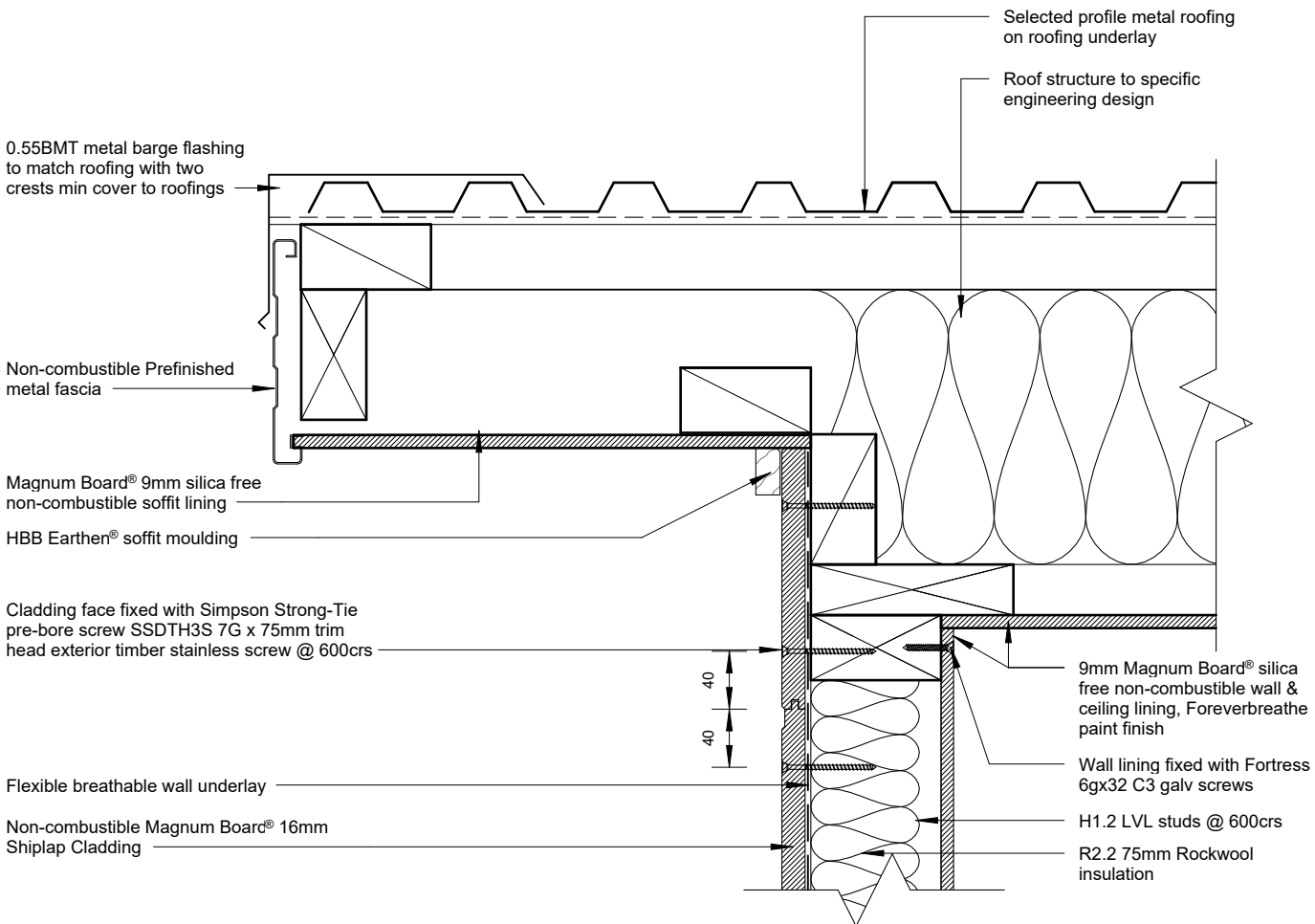
9mm Magnum Board® silica free non-combustible wall & ceiling lining, Foreverbreathe paint finish
 Wall lining fixed with Fortress 6gx32 C3 galv screws
 H1.2 LVL studs @ 600crs
 R2.2 75mm Rockwool insulation

Eave - Section Detail
 1 : 5

29/01/2024 9:07:02 am



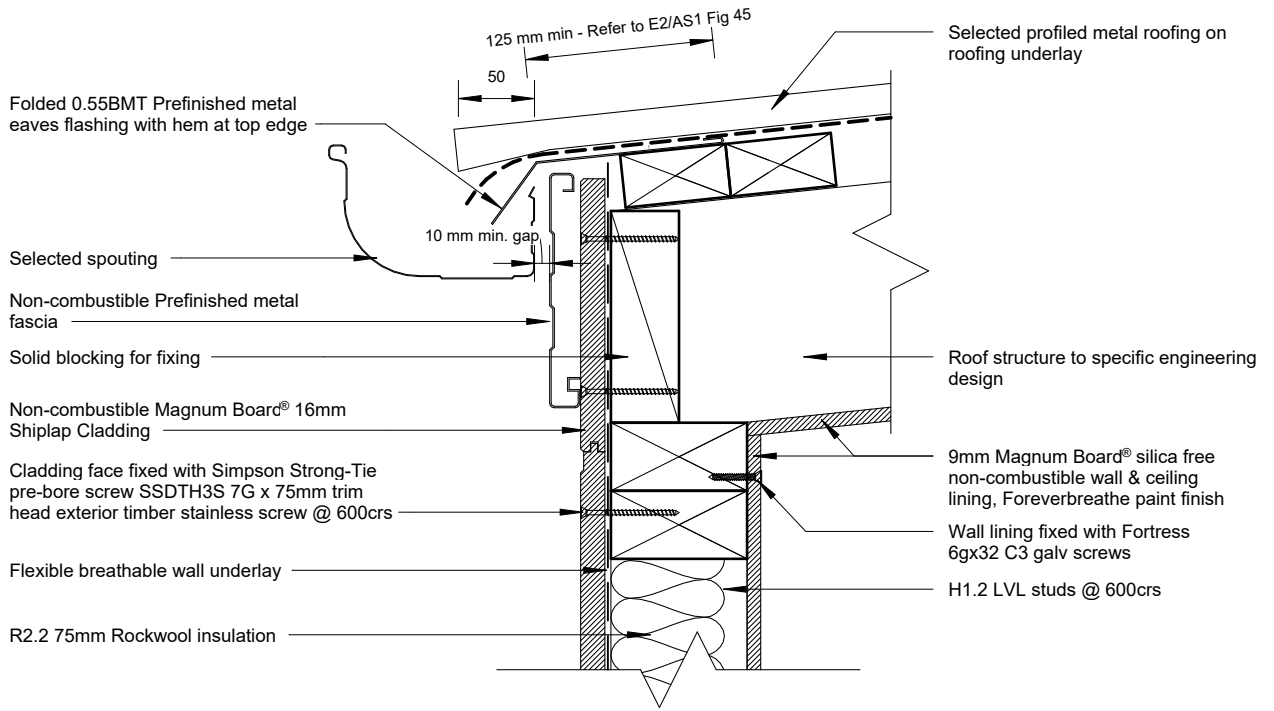
150mm
100
50
0 10mm



Barge - Sectional Detail
1 : 5

29/01/2024 9:07:02 am





Barge - No Soffit Detail

1 : 5

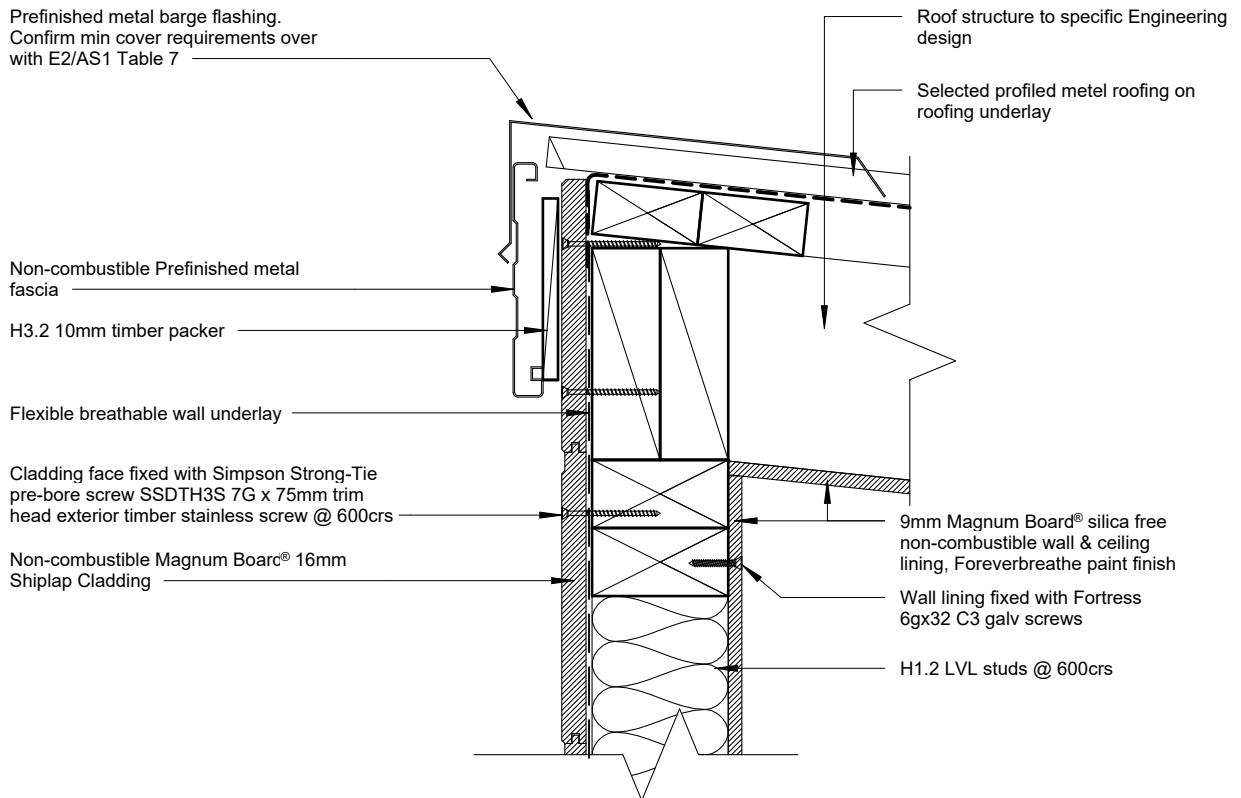
150mm

100

50

10mm

0



Roof - Wall ridge - Section Detail

1 : 5

29/01/2024 9:07:03 am



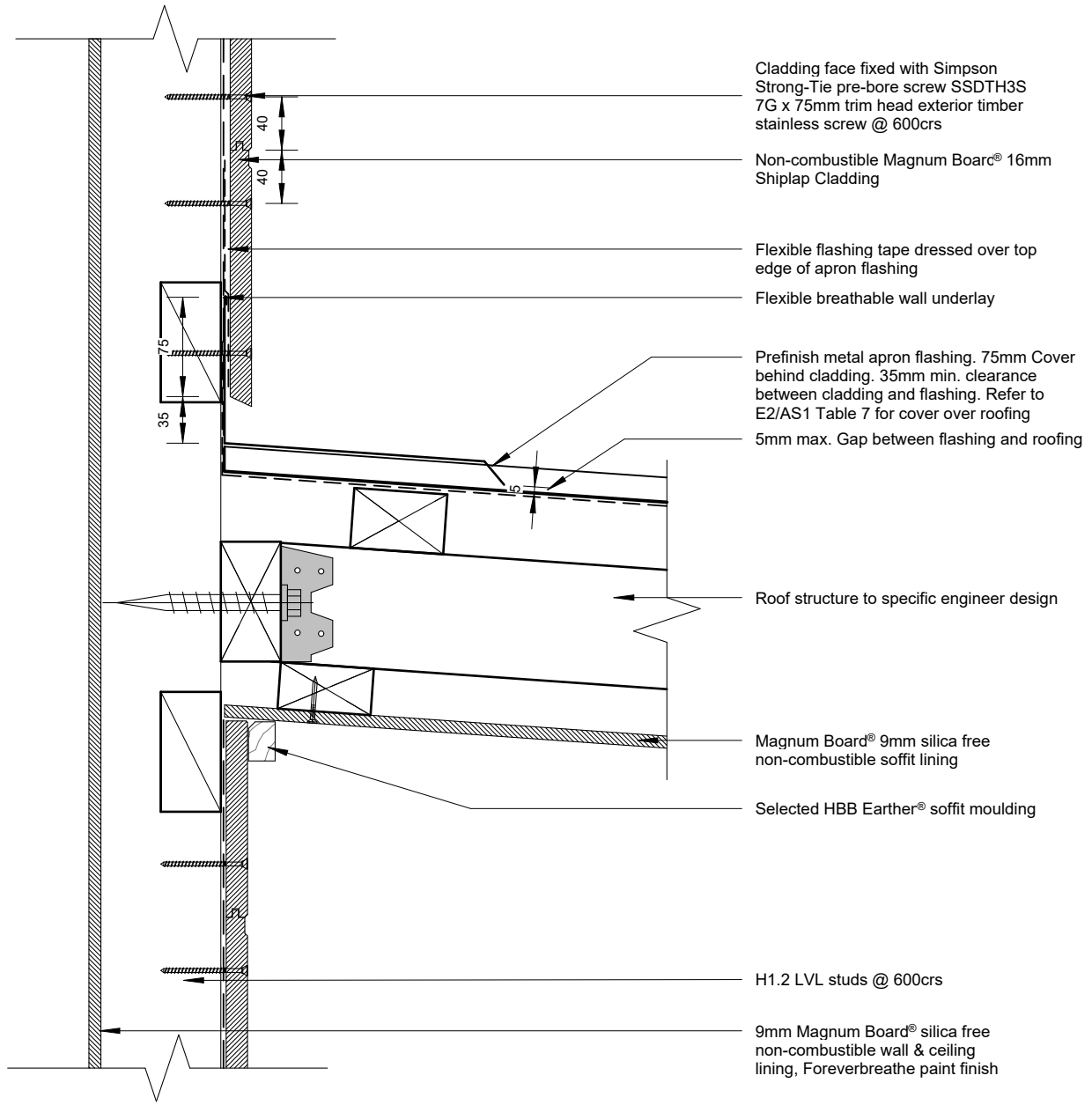
7/14

Magnum Board Horizontal Shiplap Details

Roof - Wall Ridge - Section Detail



150mm
100
50
0 10mm



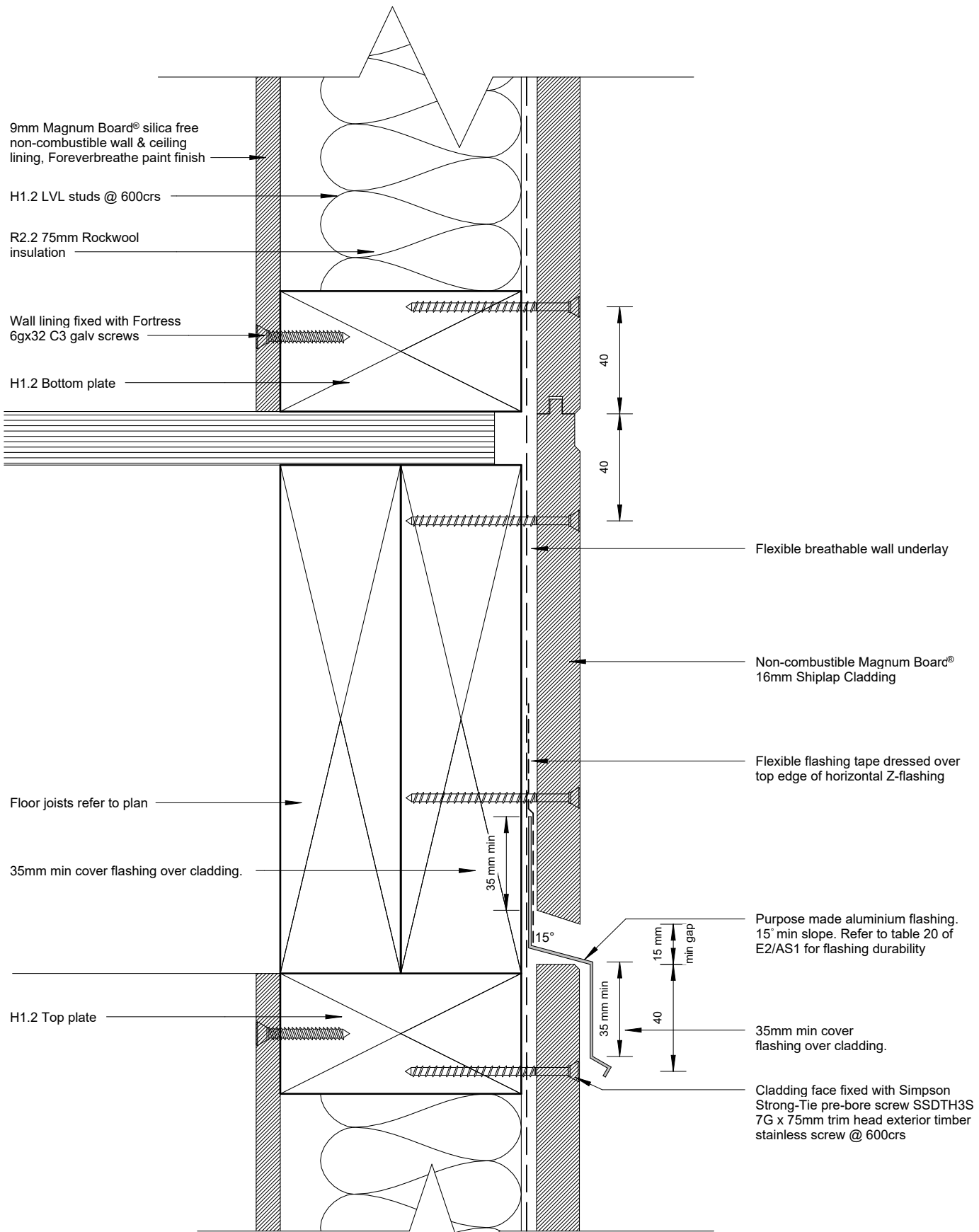
- Cladding face fixed with Simpson Strong-Tie pre-bore screw SSDTH3S 7G x 75mm trim head exterior timber stainless screw @ 600crs
- Non-combustible Magnum Board® 16mm Shiplap Cladding
- Flexible flashing tape dressed over top edge of apron flashing
- Flexible breathable wall underlay
- Prefinish metal apron flashing. 75mm Cover behind cladding. 35mm min. clearance between cladding and flashing. Refer to E2/AS1 Table 7 for cover over roofing
- 5mm max. Gap between flashing and roofing
- Roof structure to specific engineer design
- Magnum Board® 9mm silica free non-combustible soffit lining
- Selected HBB Earther® soffit moulding
- H1.2 LVL studs @ 600crs
- 9mm Magnum Board® silica free non-combustible wall & ceiling lining, Foreverbreathe paint finish

Canopy Junction - Section Detail
1 : 5

29/01/2024 9:07:03 am



150mm
100
50
10mm
0



Horizontal Control Joint

1:2

29/01/2024 9:07:03 am



9/14

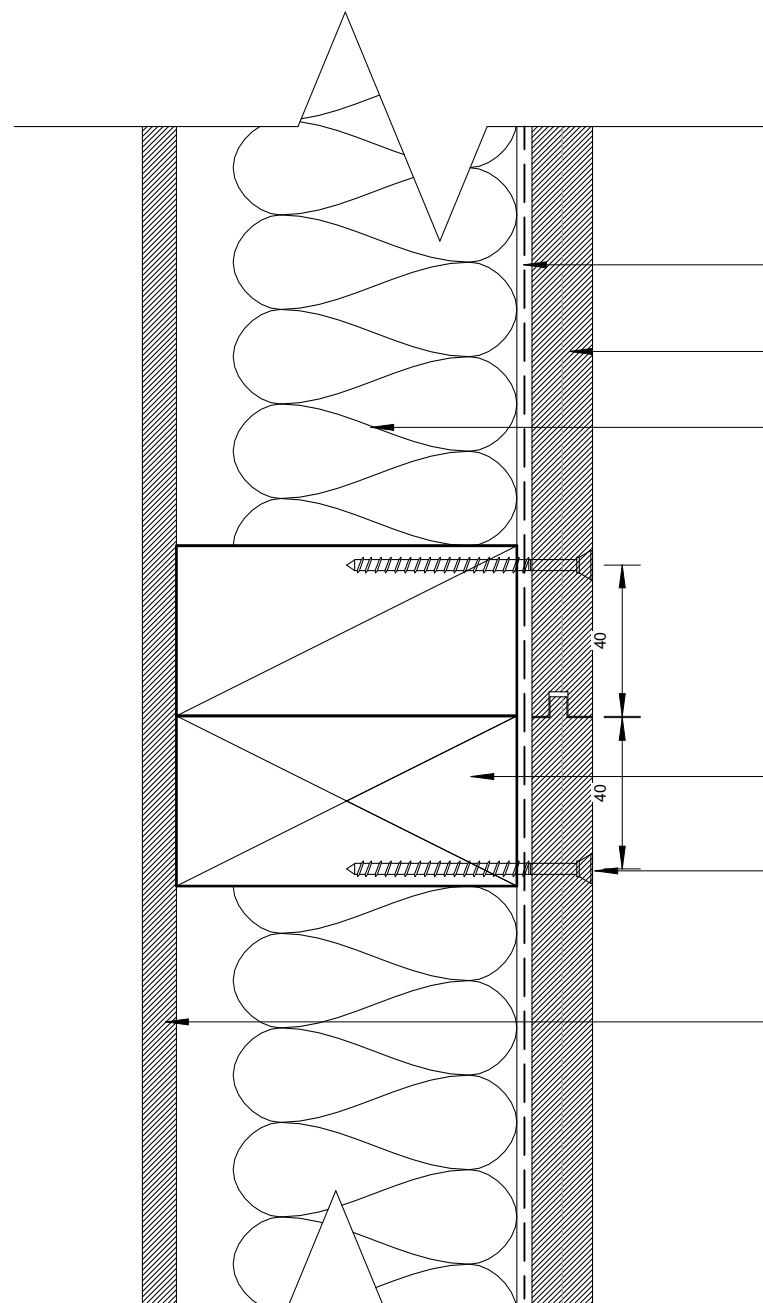
Magnum Board Horizontal Shiplap Details

Horizontal Control Joint



GRAPHIC SCALES

150mm
100
50
0 10mm



- Flexible breathable wall underlay
- Non-combustible Magnum Board® 16mm Shiplap Cladding
- R2.2 75mm Rockwool insulation
- H1.2 LVL studs @ 600crs
- Cladding face fixed with Simpson Strong-Tie pre-bore screw SSDTH3S 7G x 75mm trim head exterior timber stainless screw @ 600crs
- 9mm Magnum Board® silica free non-combustible wall & ceiling lining, Foreverbreathe paint finish

Vertical Control Joint
1:2

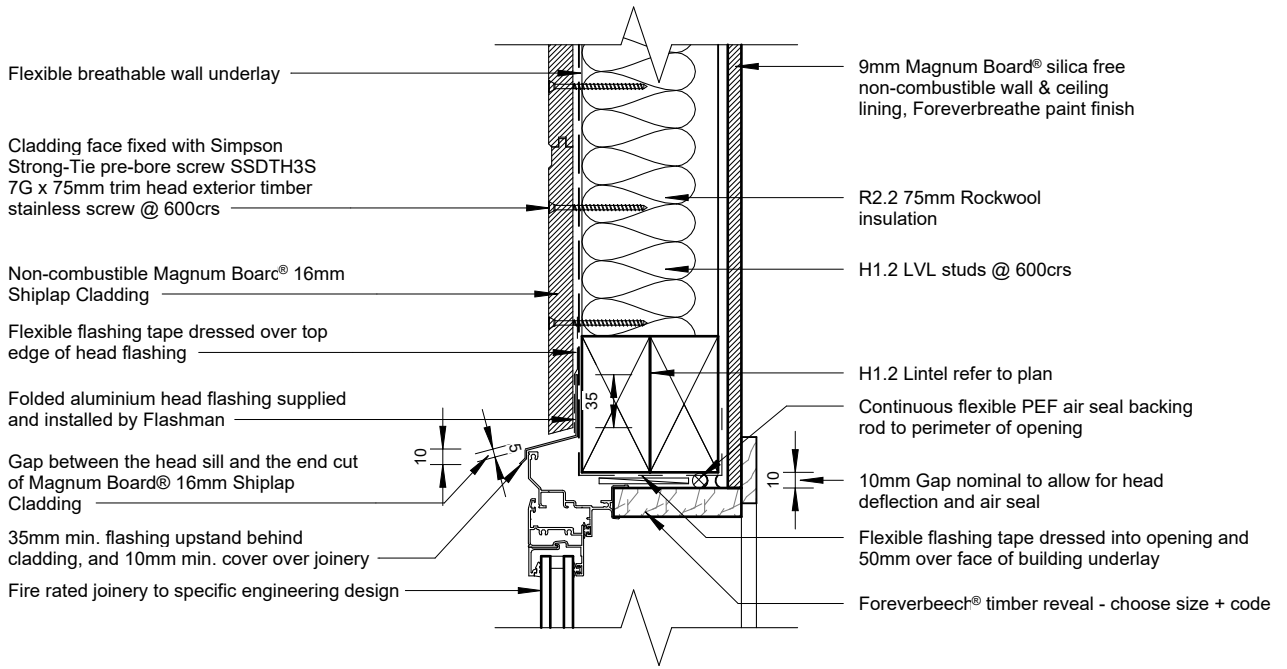
29/01/2024 9:07:03 am



10/14

Magnum Board Horizontal Shiplap Details
Vertical Control Joint





Typical Head Detail

1 : 5

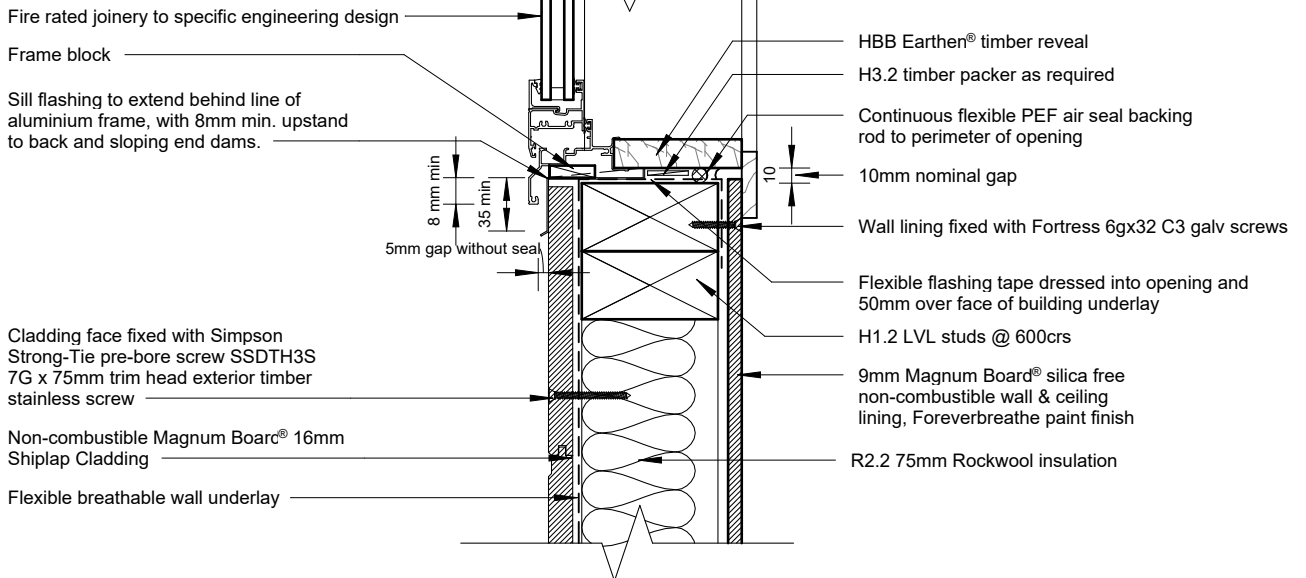
150mm

100

50

10mm

0



Typical Sill Detail

1 : 5

11/14

Magnum Board Horizontal Shiplap Details

Typical Head and Sill Detail

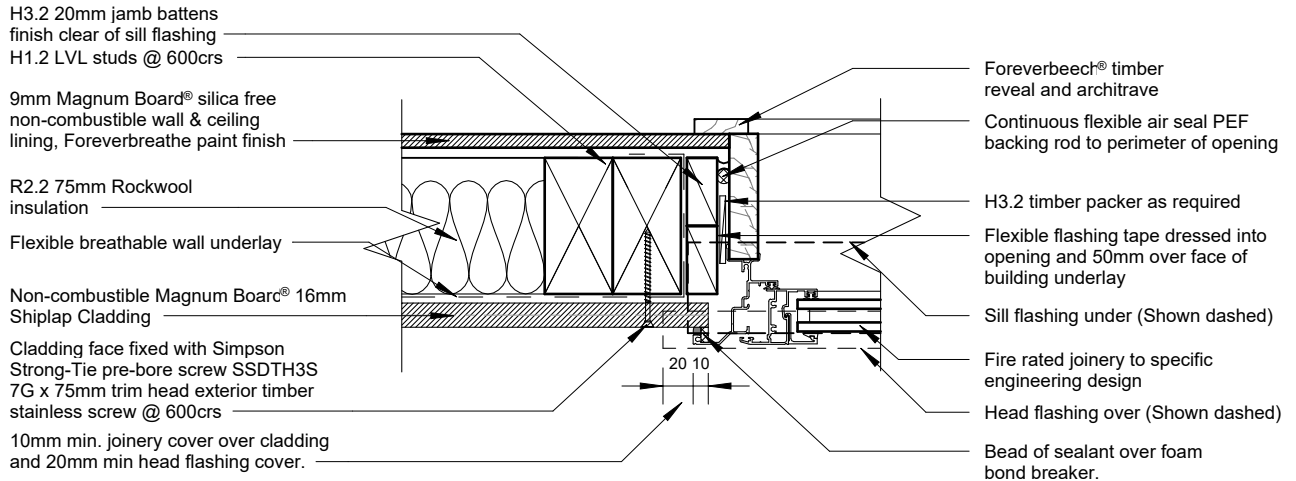


29/01/2024 9:07:03 am

GRAPHIC SCALES

128 Montreal St. ph 03 9421977 Email admin@apdesign.co.nz www.apdesign.co.nz

150mm
100
50
0 10mm



Typical Jamb Detail

1 : 5

DO NOT FIX THROUGH JAMB FLASHING

29/01/2024 9:07:03 am



150mm
100
50
0 10mm

Flexible flashing tape dressed into opening and 50mm over face of building underlay

Continuous PEF backing rod to perimeter of opening

Magnum Board® 18mm silica free non-combustible flooring

H1.2 LVL timber joist, refer to drawings

12mm gap between stringer and cladding/joinery

Decking, joist sizes and fixings as per drawings

Deck stringer and fixings to specific engineering design

Flexible breathable wall underlay

H3.2 treated timber support

Cladding face fixed with Simpson Strong-Tie pre-bore screw SSDTH3S 7G x 75mm trim head exterior timber stainless screw @ 600crs

Non-combustible Magnum Board® 16mm Shiplap Cladding

Deck Threshold Detail

1:2

29/01/2024 9:07:04 am



13/14

Magnum Board Horizontal Shiplap Details

Deck Threshold Detail



Non-combustible Magnum Board® 16mm
Shiplap Cladding

Cladding face fixed with Simpson
Strong-Tie pre-bore screw SSDTH3S
7G x 75mm trim head exterior timber
stainless screw @ 600crs

Flexible breathable wall underlay

uPVC flange plate with Mapeflex to
top half of flange

Mapeflex PU45 continuous around
pipe to cladding joint

Pipe penetration sloping to outside

MS sealant continuous around pipe to
cladding joint

R2.2 75mm Rockwool
insulation

H1.2 LVL studs @ 600crs

Solid blocking around penetration
with minimum 75mm overlap to RAB

9mm Magnum Board® silica free
non-combustible wall & ceiling
lining, Foreverbreathe paint finish

Wall lining fixed with Fortress
6gx32 C3 galv screws

Pipe Penetration Section Detail

1 : 5

9mm Magnum Board® silica free
non-combustible wall & ceiling
lining, Foreverbreathe paint finish

Non-combustible Magnum Board® 16mm
Shiplap Cladding

Mapeflex PU45 continuous around
pipe to cladding joint

uPVC flange plate with Mapeflex to
top half of flange

Support pipe with a nog under and
screw fixed strap over

H1.2 LVL studs @ 600crs

R2.2 75mm Rockwool
insulation

Flexible breathable wall underlay

Cladding face fixed with Simpson
Strong-Tie pre-bore screw SSDTH3S
7G x 75mm trim head exterior
stainless screw @ 600crs

Pipe Penetration Plan Detail

1 : 5

150mm

100

50

10mm

0

29/01/2024 9:07:04 am

