

# MB16210TG Magnum Board Vertical Shiplap Details

## DRAWING LIST

000	Cover Sheet
1/14	Concrete Foundation Detail
2/14	Timber Foundation Detail
3/14	External Corner Detail
4/14	Internal Corner Detail
5/14	Eave - Section Detail
6/14	Barge Eave - Section Details
7/14	Roof - Wall Ridge - Section Detail
8/14	Canopy Junction - Section Detail
9/14	Horizontal Control Joint
10/14	Plan Detail - Vertical Control Joint
11/14	Typical Head and Sill Detail
12/14	Typical Jamb - Plan Detail
13/14	Deck Threshold Detail
14/14	Pipe Penetration - Plan & Section Detail

150mm

100

50

10mm

0

29/01/2024 9:14:42 am



000

Magnum Board Vertical Shiplap Details

Cover Sheet



150mm  
100  
50  
0 10mm

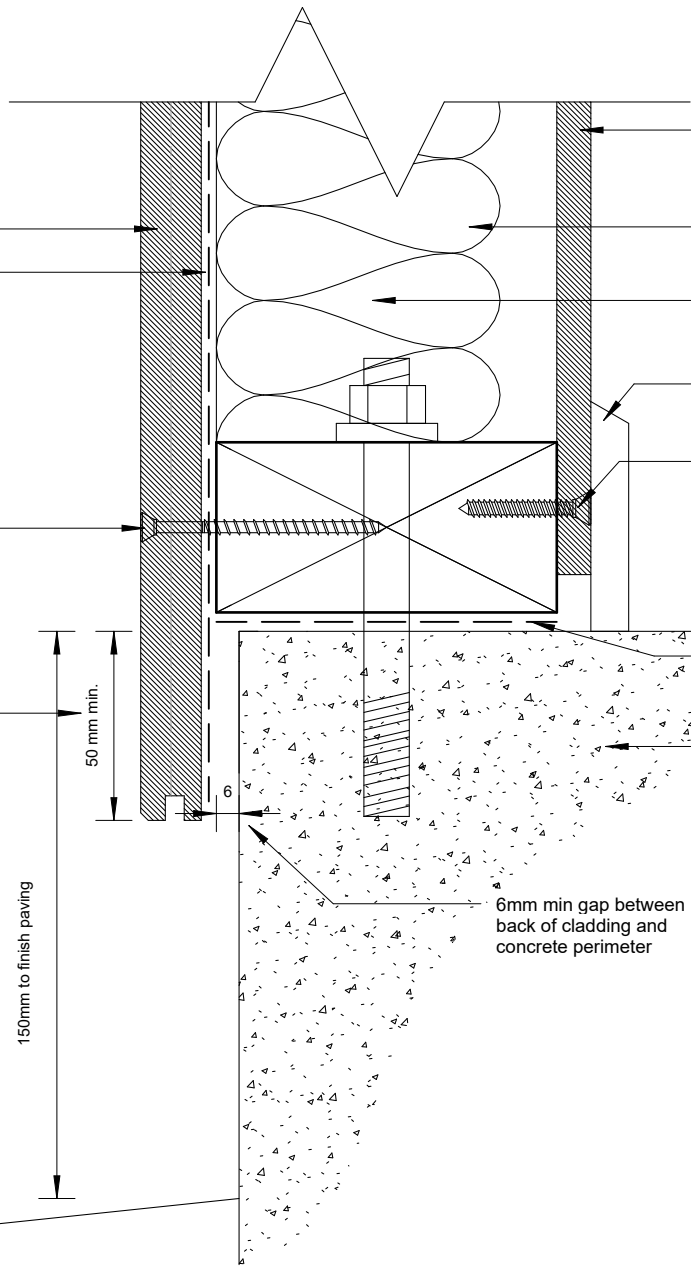
Non-combustible Magnum Board®  
16mm Shiplap Cladding

Flexible breathable wall underlay

Cladding face fixed with Simpson  
Strong-Tie pre-bore screw  
SSDTH3S 7G x 75mm trim head  
exterior timber stainless screw @  
600crs

50mm min cladding  
overhang

Refer to E2/AS1 for  
threshold detail



9mm Magnum Board®  
silica free non-combustible  
wall & ceiling lining,  
Foreverbreathe paint finish

H1.2 LVL studs and  
noggings @ 600crs max

R2.2 75mm Rcocwool  
insulation

Selected HBB timber  
skirting.

Wall lining fixed with  
Fortress 6gx32 C3 galv  
screws

DPC between all timber  
and concrete

Concrete floor slab, refer  
to drawings

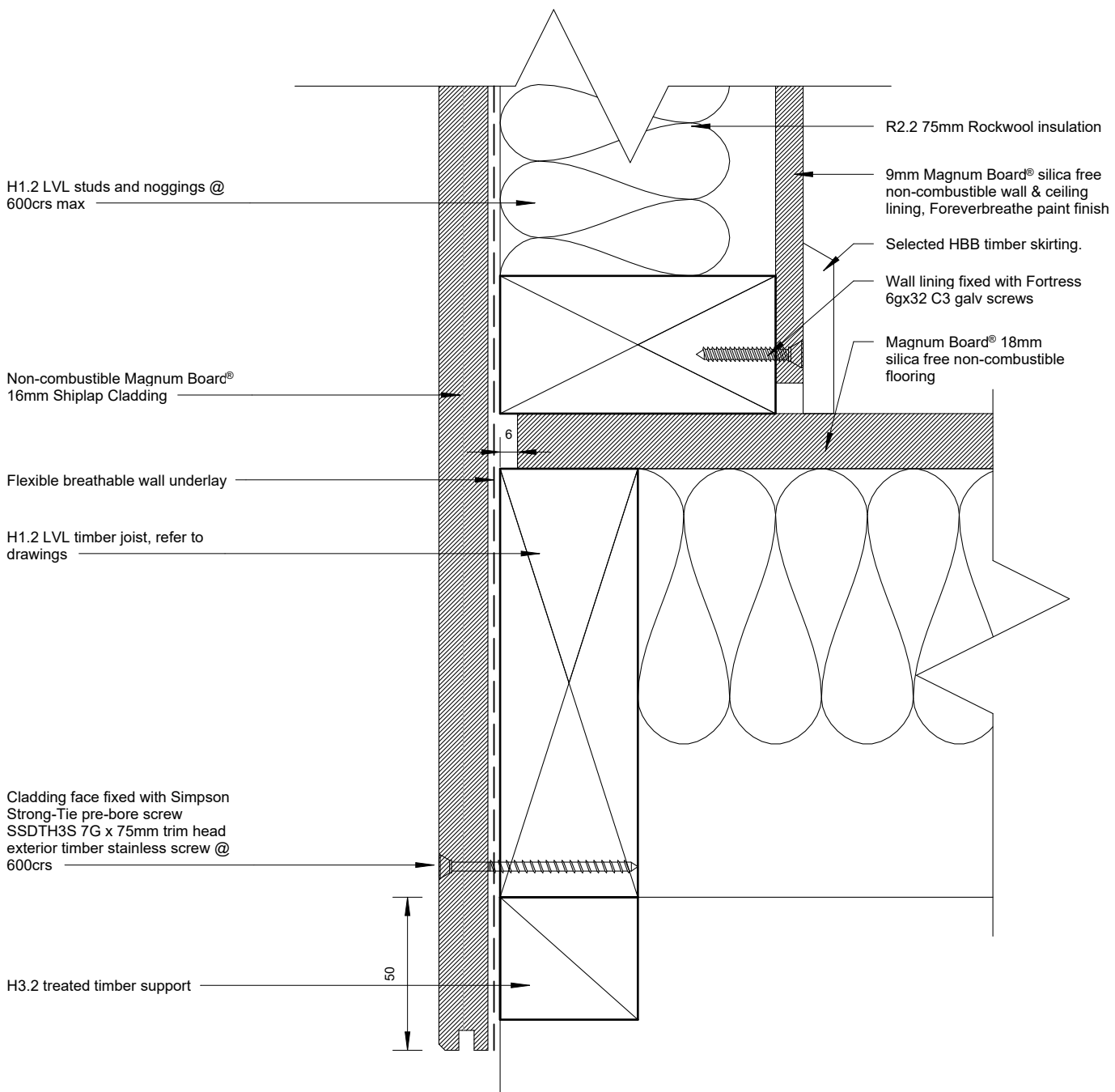
6mm min gap between  
back of cladding and  
concrete perimeter

**Concrete Foundation Detail**  
1 : 2

29/01/2024 9:14:42 am



150mm  
100  
50  
0 10mm

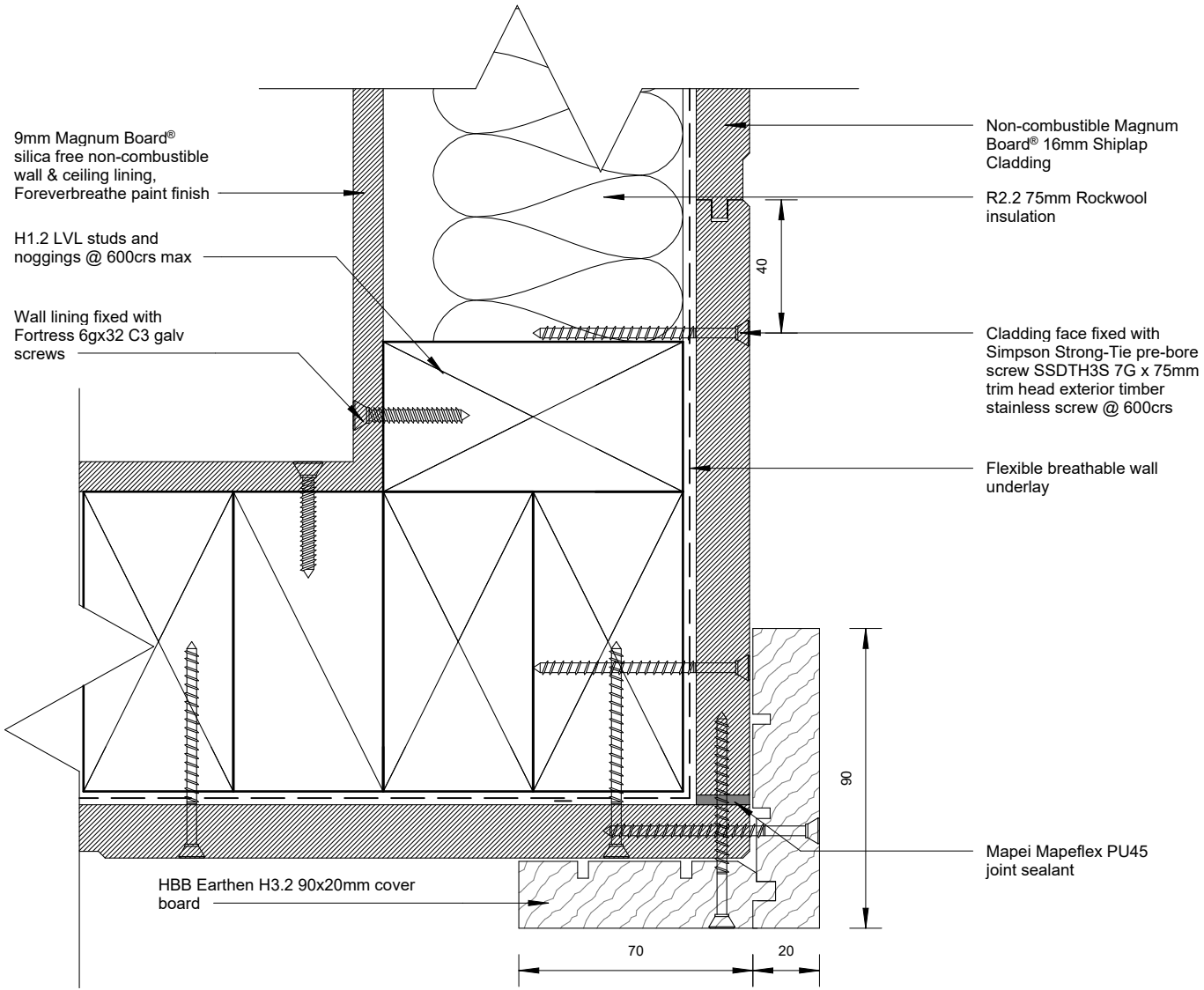


**Timber Foundation Detail**  
1:2

29/01/2024 9:14:43 am



150mm  
100  
50  
0 10mm



**External Corner Detail**  
1 : 2

29/01/2024 9:14:43 am



150mm  
100  
50  
0 10mm

H1.2 LVL studs and noggings @ 600crs max

50

50

Wall lining fixed with Fortress 6gx32 C3 galv screws

50x50 uPVC internal corner flashing

18x18mm min. corner batten with chamfered rear edge

Mapei Mapeflex PU45 joint sealant

Cladding face fixed with Simpson Strong-Tie pre-bore screw SSDTH3S 7G x 75mm trim head exterior timber stainless screw @ 600crs

Flexible breathable wall underlay

9mm Magnum Board® silica free non-combustible wall & ceiling lining, Foreverbreathe paint finish

R2.2 75mm Rockwool insulation

Non-combustible Magnum Board® 16mm Shiplap Cladding

### Internal Corner Detail

1 : 2

29/01/2024 9:14:43 am



150mm  
100  
50  
0 10mm

Selected profiled metal roofing  
on roofing underlay

Ensure roofing underlay is laid  
horizontally and over top of eaves  
flashing. Ensure roof fixing does  
not penetrate eave flashing

125mm min.-Refer E2/AS1 Fig. 45

Roof structure to specific  
engineering design

Folded 0.55BMT Prefinished  
metal eaves flashing with hem  
at top edge

50

Selected spouting

10 mm min. gap

Provide solid blocking for fixing

Non-combustible Prefinished  
metal fascia

Magnum Board® 9mm silica free  
non-combustible soffit lining

HBB Earthen® soffit moulding

Cladding face fixed with Simpson Strong-Tie pre-bore  
screw SSDTH3S 7G x 75mm trim head exterior timber  
stainless screw @ 600crs

9mm Magnum Board®  
silica free non-combustible  
wall & ceiling lining,  
Foreverbreathe paint finish

Wall lining fixed with  
Fortress 6gx32 C3 galv  
screws

H1.2 LVL studs and  
noggings @ 600crs

R2.2 75mm Rockwool  
insulation

Non-combustible Magnum Boarc®  
16mm Shiplap Cladding

Flexible breathable wall underlay

## Eave - Section Detail

1 : 5

29/01/2024 9:14:43 am



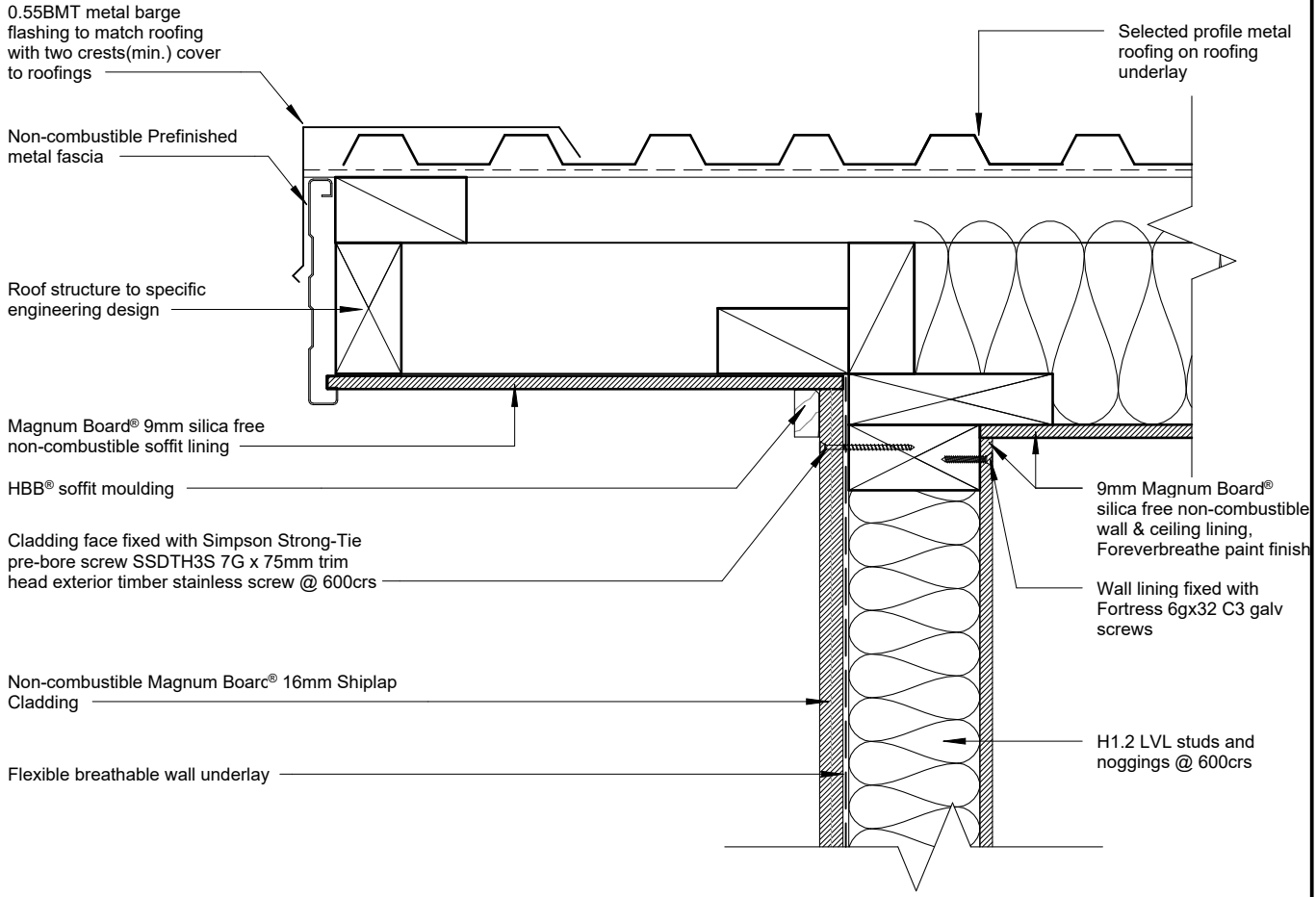
5/14

Magnum Board Vertical Shiplap Details

Eave - Section Detail



150mm  
100  
50  
0 10mm

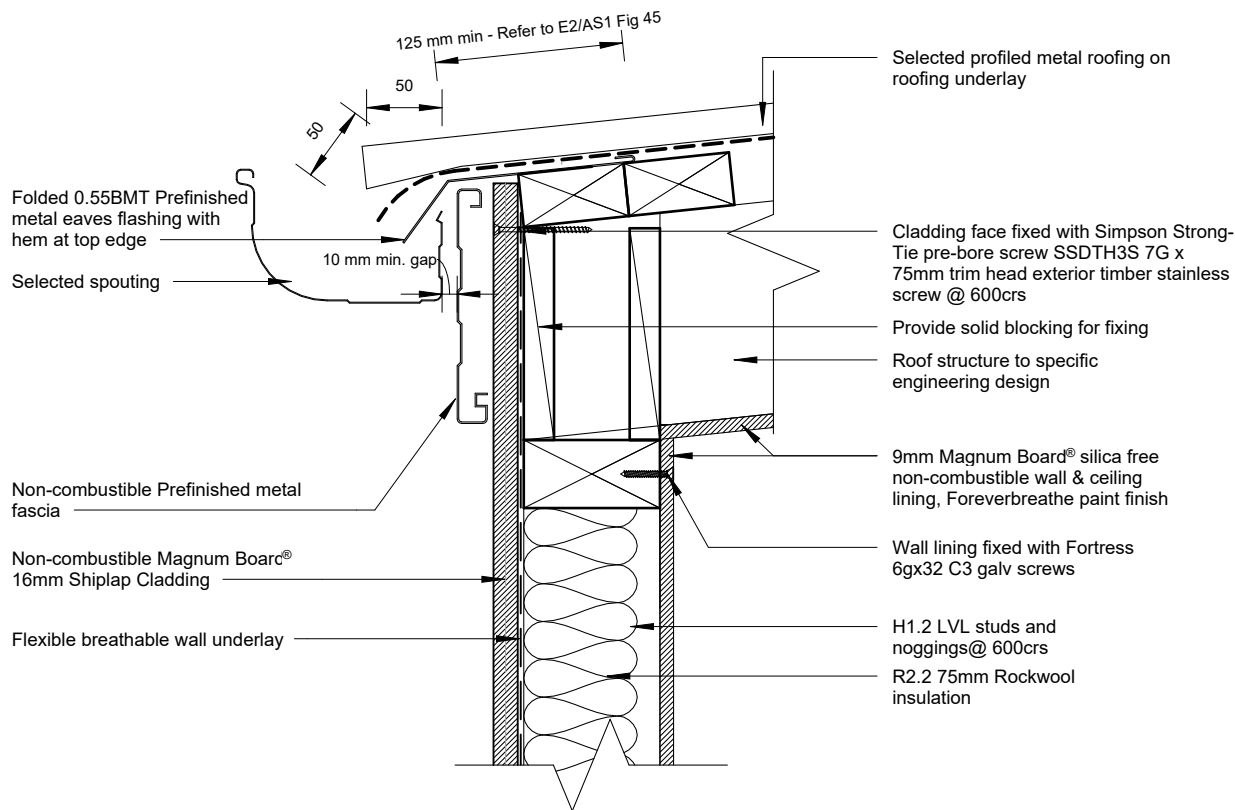


**Barge Eave - Section Detail**  
1 : 5

29/01/2024 9:14:43 am



150mm



### Barge - No Soffit - Section Detail

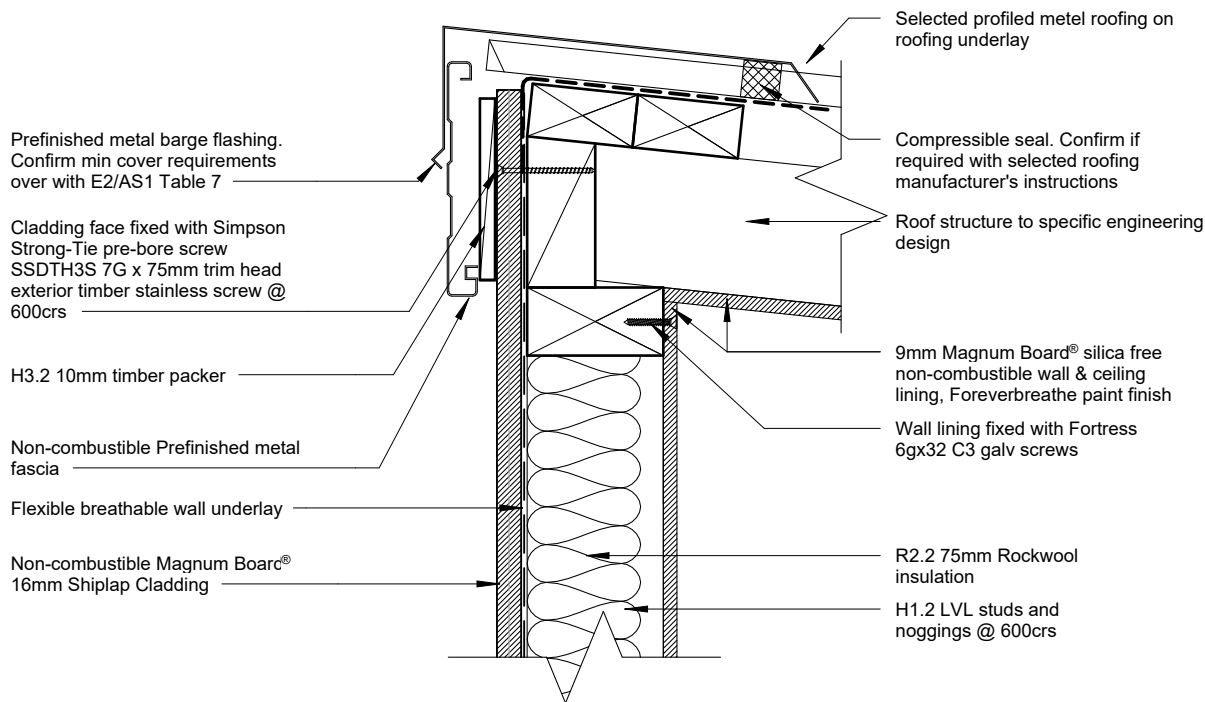
1 : 5

100

50

10mm

0



### Roof - Wall ridge - Section Detail

1 : 5

29/01/2024 9:14:43 am



7/14

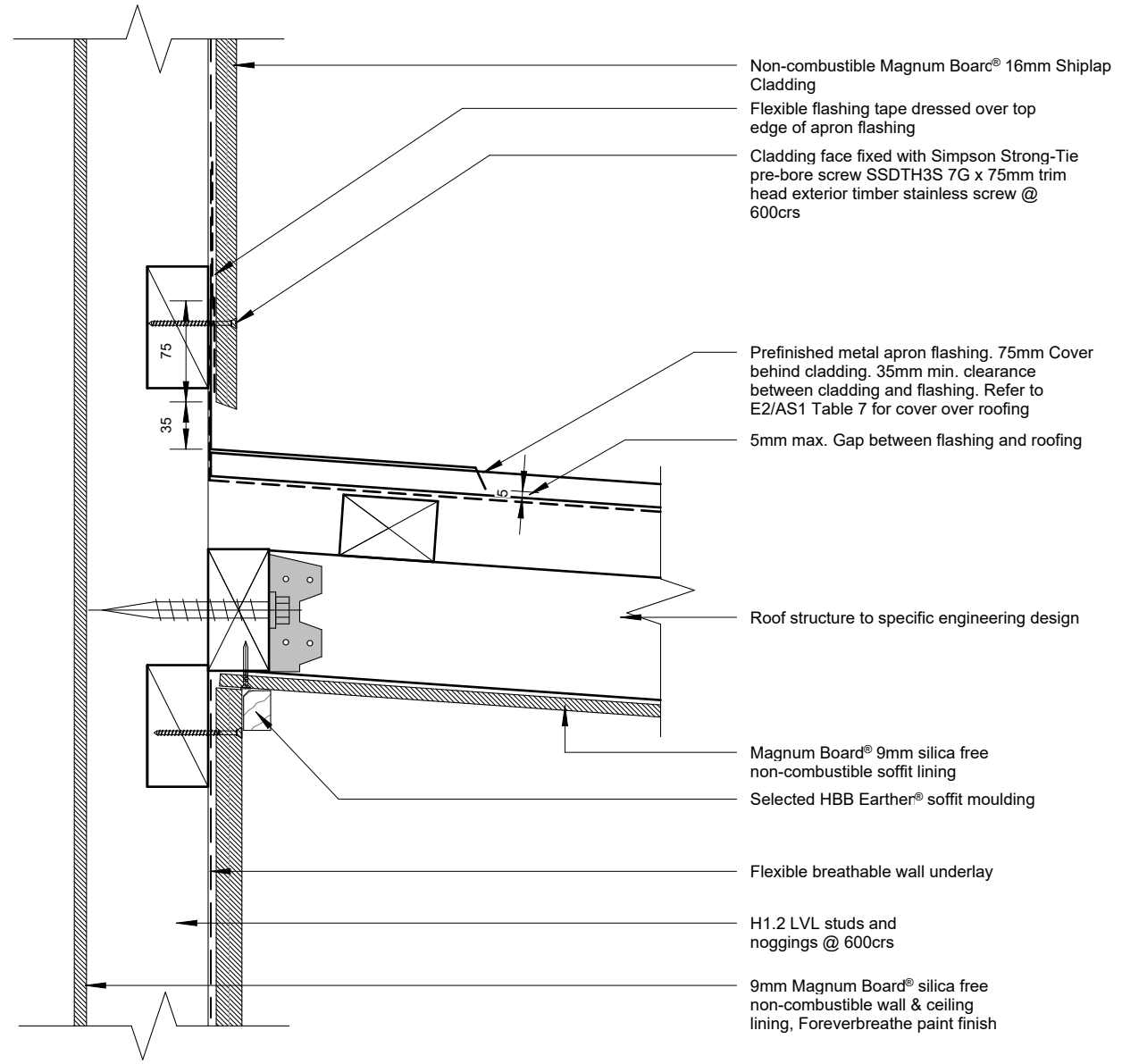
Magnum Board Vertical Shiplap Details

Roof - Wall Ridge - Section Detail





150mm  
100  
50  
0 10mm



- Non-combustible Magnum Board® 16mm Shiplap Cladding
- Flexible flashing tape dressed over top edge of apron flashing
- Cladding face fixed with Simpson Strong-Tie pre-bore screw SSDTH3S 7G x 75mm trim head exterior timber stainless screw @ 600crs
- Prefinished metal apron flashing. 75mm Cover behind cladding. 35mm min. clearance between cladding and flashing. Refer to E2/AS1 Table 7 for cover over roofing
- 5mm max. Gap between flashing and roofing
- Roof structure to specific engineering design
- Magnum Board® 9mm silica free non-combustible soffit lining
- Selected HBB Earther® soffit moulding
- Flexible breathable wall underlay
- H1.2 LVL studs and noggings @ 600crs
- 9mm Magnum Board® silica free non-combustible wall & ceiling lining, Foreverbreathe paint finish

**Canopy Junction - Section Detail**  
1 : 5

29/01/2024 9:14:44 am



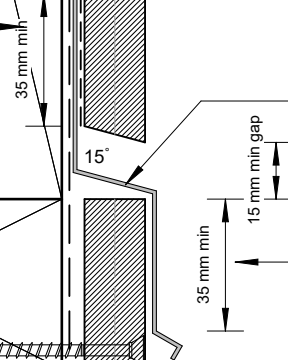
150mm  
100  
50  
0 10mm

9mm Magnum Board® silica free non-combustible wall & ceiling lining, Foreverbreathe paint finish  
 R2.2 75mm Rockwool insulation  
 H1.2 LVL studs and noggings @ 600crs  
 Wall lining fixed with Fortress 6gx32 C3 galv screws  
 H1.2 Bottom plate

Floor joists refer to plan  
 35mm min cover flashing over cladding.

H1.2 Top plate

Non-combustible Magnum Board® 16mm Shiplap Cladding  
 Flexible flashing tape dressed over top edge of horizontal Z-flashing  
 Cladding face fixed with Simpson Strong-Tie pre-bore screw SSDTH3S 7G x 75mm trim head exterior timber stainless screw @ 600crs  
 Pre-finished metal, purpose made flashing. 15° min slope. Refer to table 20 of E2/AS1 for flashing durability  
 35mm min cover flashing over cladding.  
 Flexible breathable wall underlay



**Vertical Detail - Horizontal Control Joint**

1 : 2

29/01/2024 9:14:44 am



9/14

Magnum Board Vertical Shiplap Details  
 Horizontal Control Joint



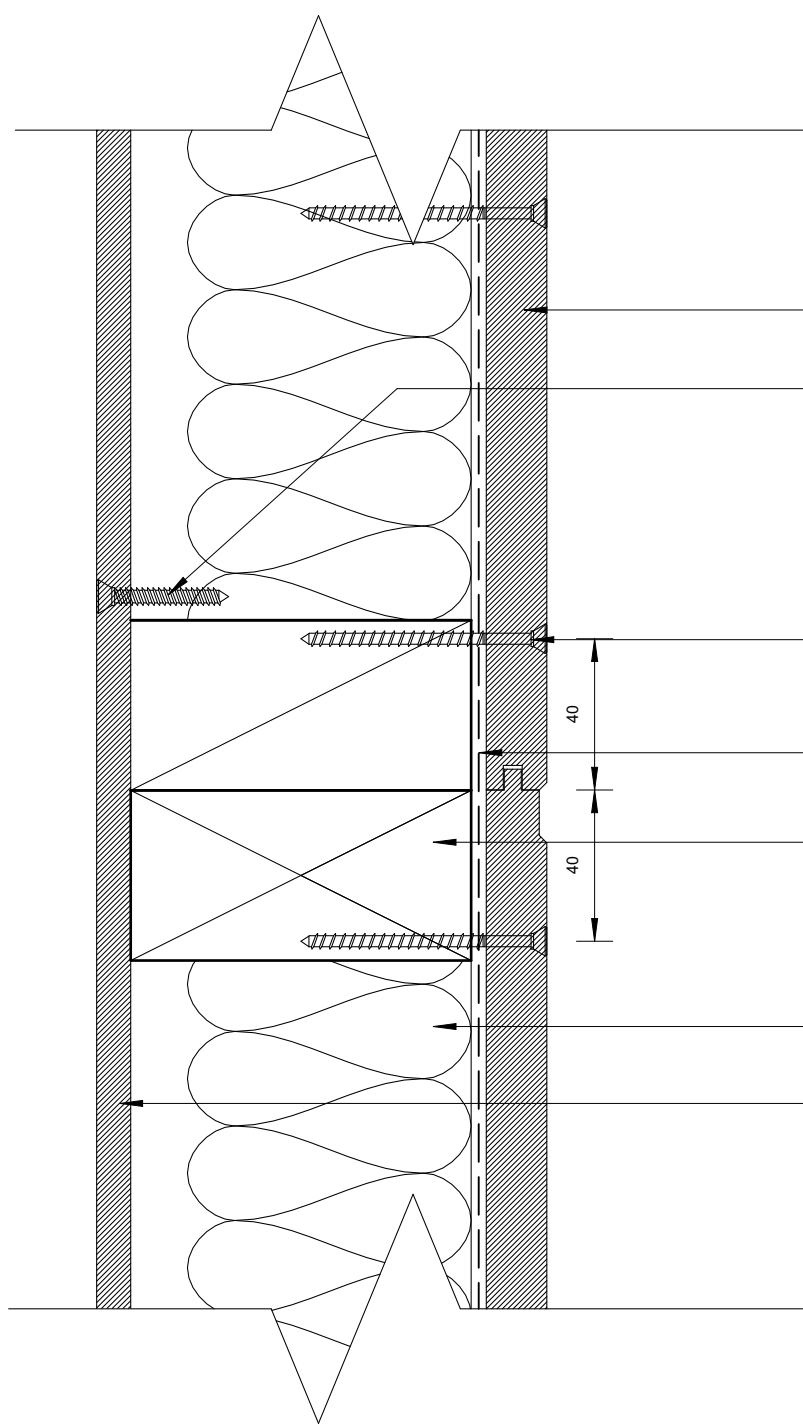
150mm

100

50

10mm

0



Non-combustible Magnum Board® 16mm Shiplap Cladding

Wall lining fixed with Fortress 6gx32 C3 galv screws

Cladding face fixed with Simpson Strong-Tie pre-bore screw SSDTH3S 7G x 75mm trim head exterior timber stainless screw @ 600crs

Flexible breathable wall underlay

H1.2 LVL studs and noggings @ 600crs

R2.2 75mm Rockwool insulation

9mm Magnum Board® silica free non-combustible wall & ceiling lining, Foreverbreathe paint finish

### Plan Detail - Vertical Control Joint

1:2

29/01/2024 9:14:44 am



10/14

Magnum Board Vertical Shiplap Details

Plan Detail - Vertical Control Joint



150mm

100

50

10mm

0

Non-combustible Magnum Board® 16mm  
Shiplap Cladding

Flexible breathable wall underlay

Cladding face fixed with Simpson Strong-Tie  
pre-bore screw SSDTH3S 7G x 75mm trim  
head exterior timber stainless screw @  
600crs

35mm min. Flashing upstand behind  
cladding, and 10mm min. cover over joinery

Fire rated joinery to specific engineering design

H1.2 LVL studs and  
noggings @ 600crs  
R2.2 75mm Rockwool  
insulation

9mm Magnum Board® silica free  
non-combustible wall & ceiling  
lining, Foreverbreathe paint finish

Flexible flashing tape dressed over top  
edge of head flashing

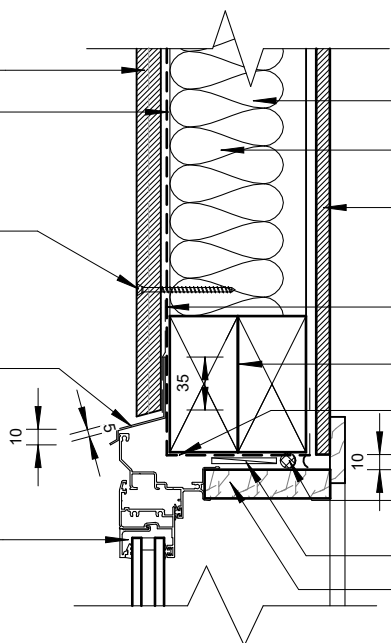
H1.2 Lintel refer to plan

Flexible flashing tape dressed into opening and  
50mm over face of rigid air barrier

Continuous PEF backing rod to  
perimeter of opening

H3.2 packing

Selected Foreverbeecr® timber reveal



### Typical Head - Section Detail

1 : 5

Fire rated joinery to specific engineering design

Sill flashing to extend behind line of  
aluminium frame, with 8mm min. upstand to  
back and sloping end dams.

Cladding face fixed with Simpson Strong-Tie  
pre-bore screw SSDTH3S 7G x 75mm trim  
head exterior timber stainless screw @  
600crs

Flexible breathable wall underlay

Non-combustible Magnum Board®  
16mm Shiplap Cladding

HBB Earthen® timber reveal

Continuous PEF backing rod to  
perimeter of opening

H3.2 packer

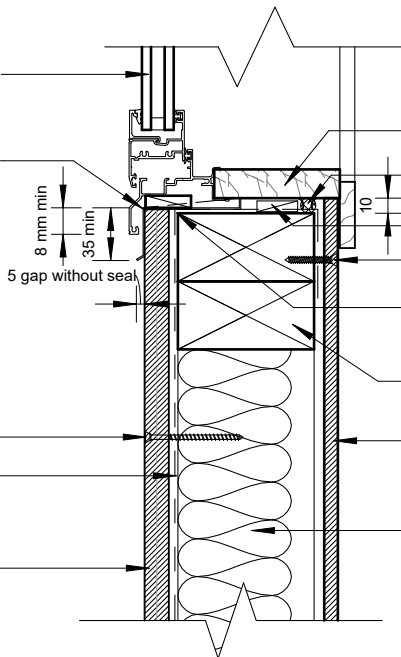
Wall lining fixed with Fortress 6gx32 C3 galv screws

Flexible flashing tape dressed into opening and  
50mm over face of rigid air barrier

H1.2 LVL studs and  
noggings @ 600crs

9mm Magnum Board® silica free  
non-combustible wall & ceiling  
lining, Foreverbreathe paint finish

R2.2 75mm Rockwool insulation



### Typical Sill - Section Detail

1 : 5

29/01/2024 9:14:44 am



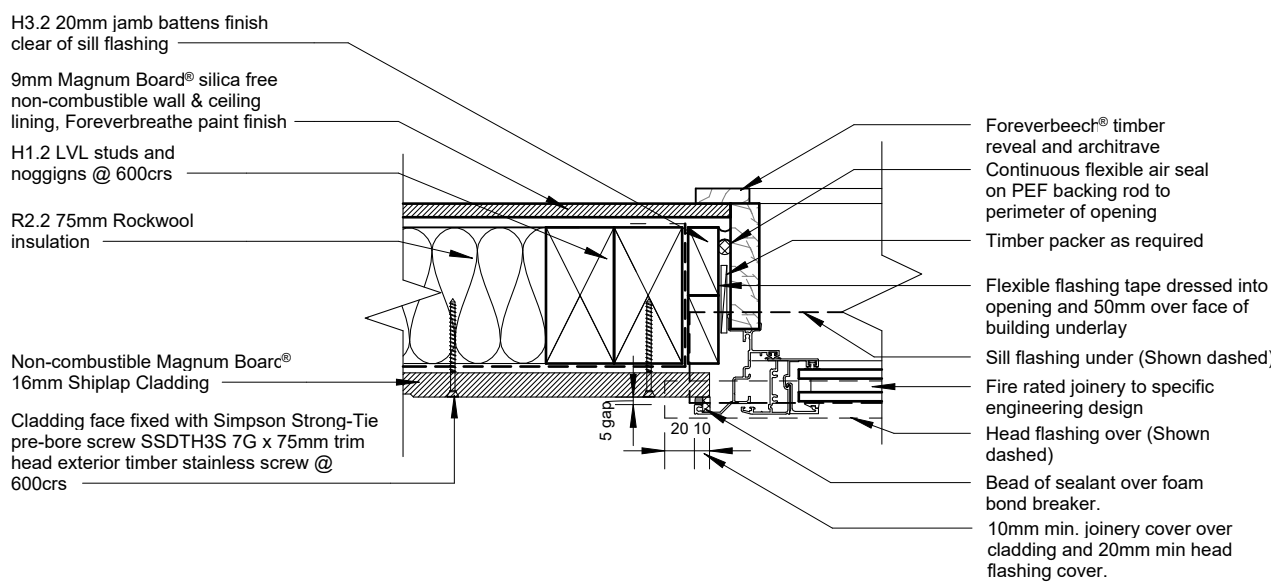
11/14

Magnum Board Vertical Shiplap Details

Typical Head and Sill Detail



150mm  
100  
50  
0 10mm



**DO NOT FIX THROUGH JAMB FLASHING**

**Typical Jamb - Plan Detail**  
1 : 5

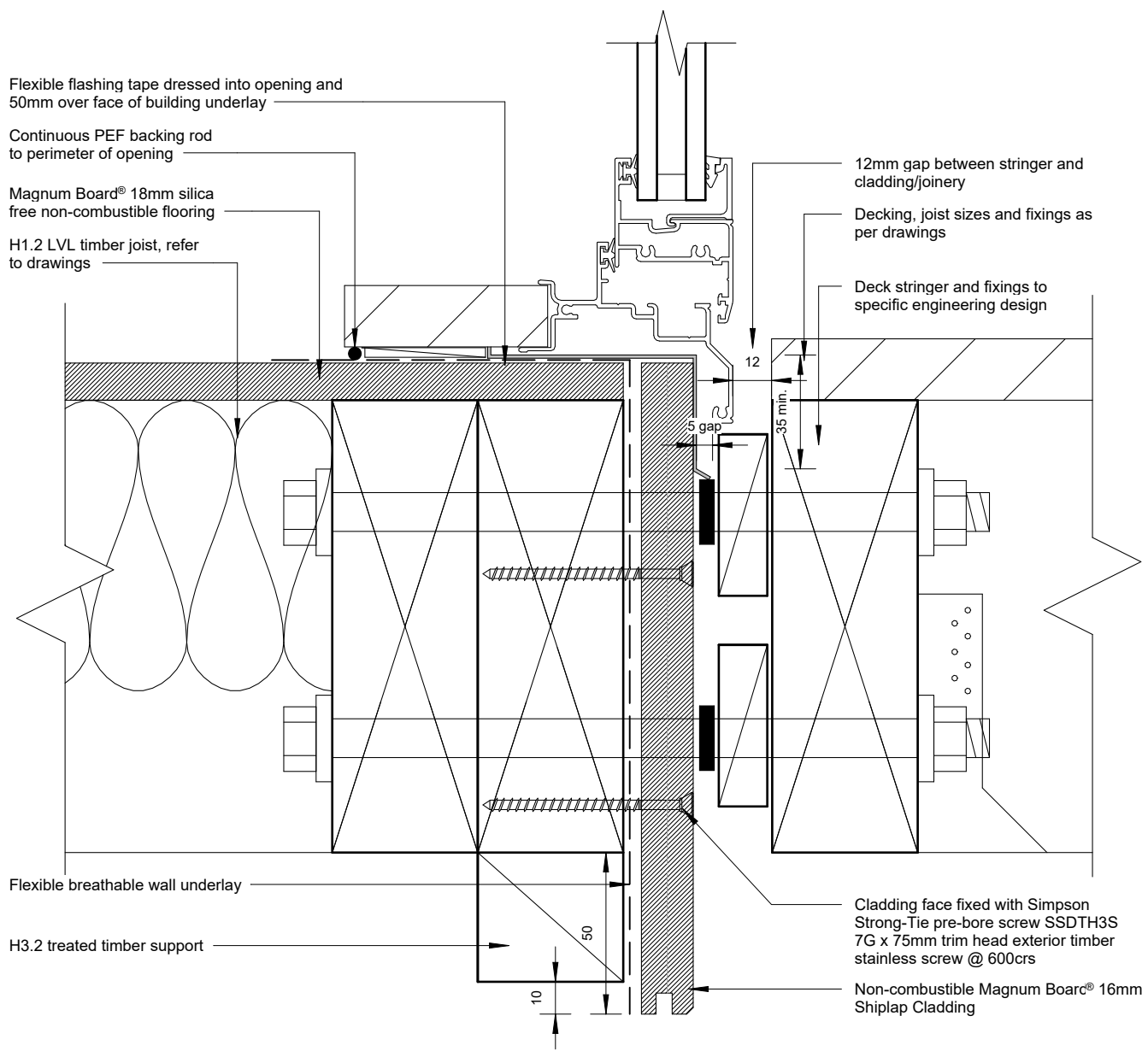
29/01/2024 9:14:44 am



12/14  
Magnum Board Vertical Shiplap Details  
Typical Jamb - Plan Detail



150mm  
100  
50  
0 10mm



Flexible flashing tape dressed into opening and 50mm over face of building underlay

Continuous PEF backing rod to perimeter of opening

Magnum Board® 18mm silica free non-combustible flooring

H1.2 LVL timber joist, refer to drawings

12mm gap between stringer and cladding/joinery

Decking, joist sizes and fixings as per drawings

Deck stringer and fixings to specific engineering design

Flexible breathable wall underlay

H3.2 treated timber support

Cladding face fixed with Simpson Strong-Tie pre-bore screw SSDTH3S 7G x 75mm trim head exterior timber stainless screw @ 600crs

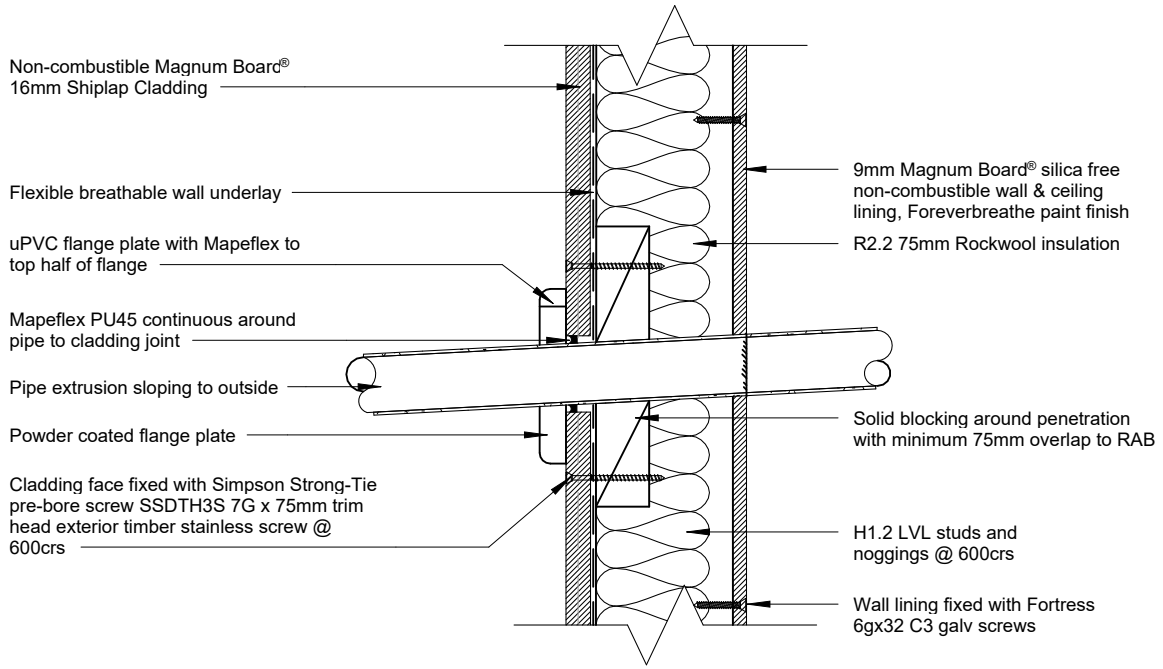
Non-combustible Magnum Board® 16mm Shiplap Cladding

**Deck Threshold Detail**  
1:2

29/01/2024 9:14:45 am

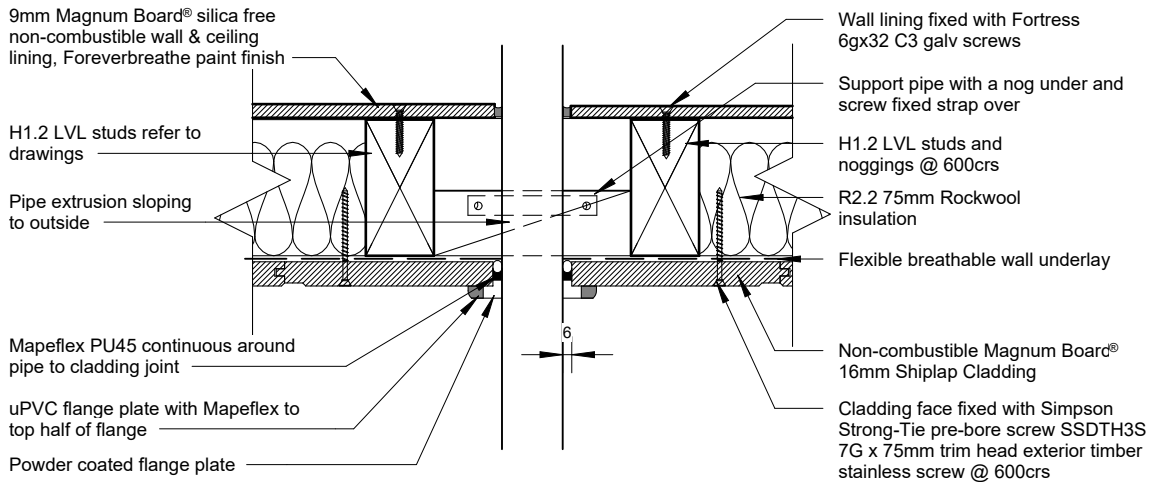


150mm  
100  
50  
10mm  
0



### Pipe Penetration - Section Detail

1 : 5



### Pipe Penetration - Plan Detail

1 : 5

