

MB16210TG Magnum Board Vertical Shiplap Details

DRAWING LIST

000	Cover Sheet
1/14	Concrete Foundation Detail
2/14	Timber Foundation Detail
3/14	External Corner Detail
4/14	Internal Corner Detail
5/14	Eave - Section Detail
6/14	Barge Eave - Section Details
7/14	Roof - Wall Ridge - Section Detail
8/14	Canopy Junction - Section Detail
9/14	Horizontal Control Joint
10/14	Plan Detail - Vertical Control Joint
11/14	Typical Head and Sill Detail
12/14	Typical Jamb - Plan Detail
13/14	Deck Threshold Detail
14/14	Pipe Penetration - Plan & Section Detail

150mm

100

50

10mm

0

26/01/2024 1:13:17 pm



000

Magnum Board Vertical Shiplap Details

Cover Sheet



150mm
100
50
0 10mm

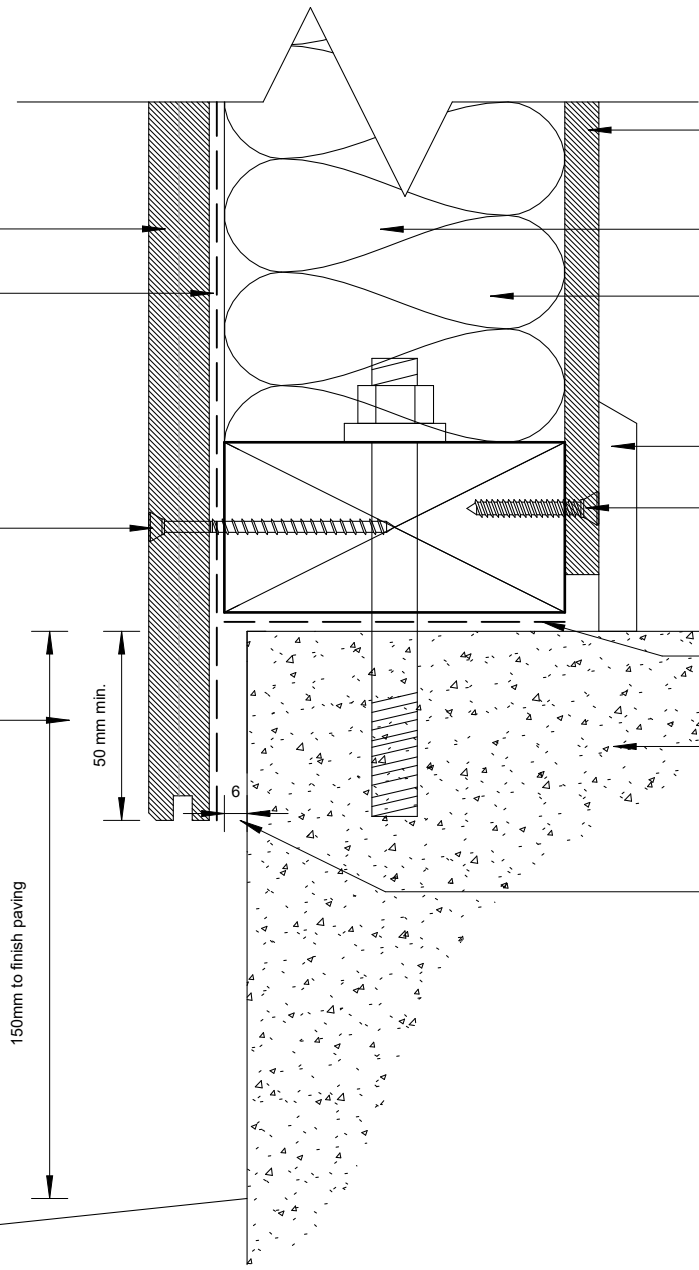
Magnum Board® 16mm Shiplap Cladding

Thermakraft™ Covertex 403 Plus breathable wall underlay

Cladding face fixed with Simpson Strong-Tie pre-bore screw SSDTH3S 7G x 75mm trim head exterior timber stainless screw @ 600crs

50mm min cladding overhang

Refer to E2/AS1 for threshold detail



9mm Magnum Board® silica free non-combustible wall & ceiling lining, Foreverbreathe paint finish

H1.2 LVL studs and noggings @ 600crs max

Sheep's Wool Insulation

Selected HBB timber skirting.

Wall lining fixed with Fortress 6gx32 C3 galv screws

DPC between all timber and concrete

Concrete floor slab, refer to drawings

6mm min gap between back of cladding and concrete perimeter

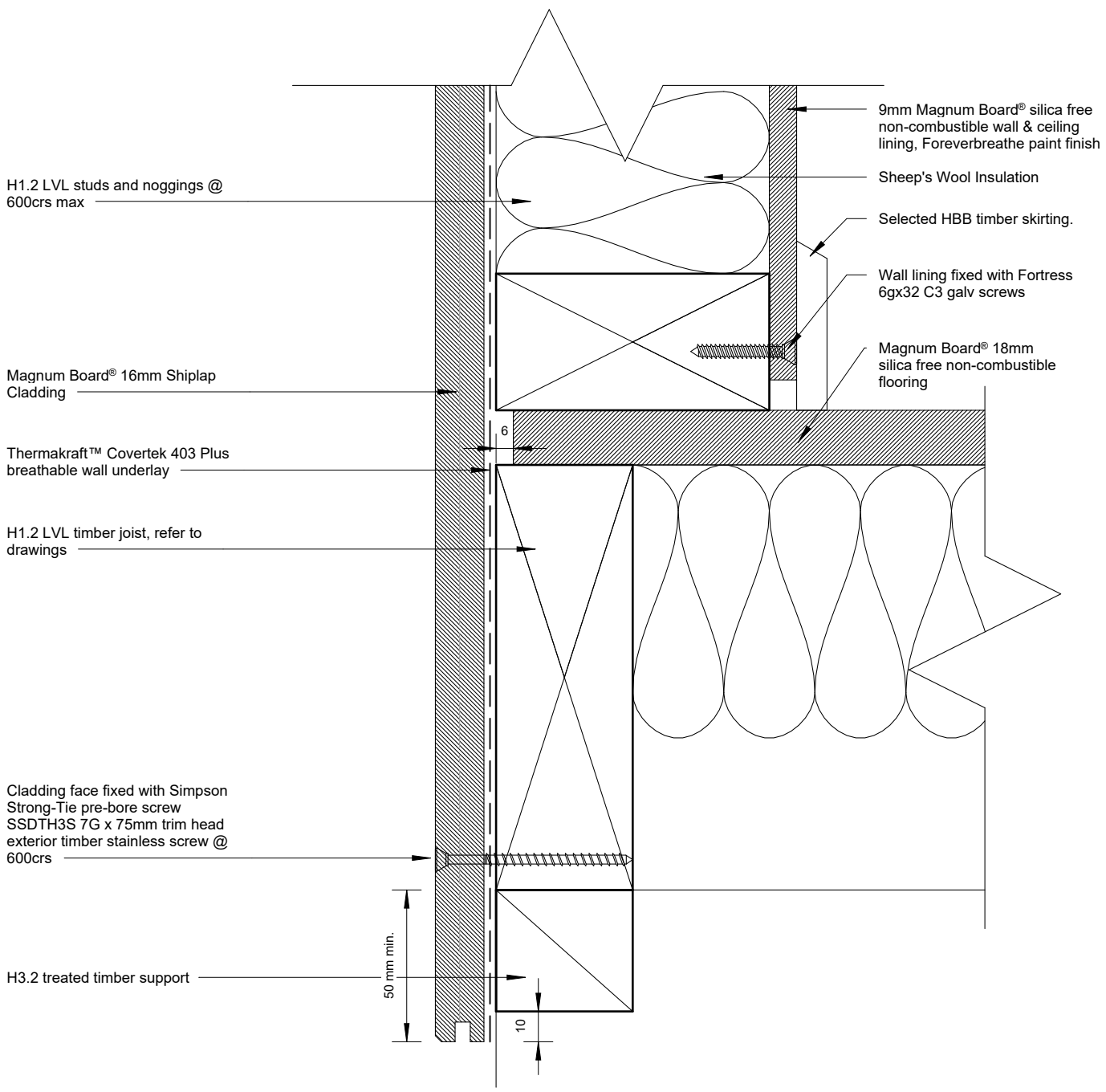
Concrete Foundation Detail

1 : 2

26/01/2024 1:13:17 pm



150mm
100
50
0 10mm

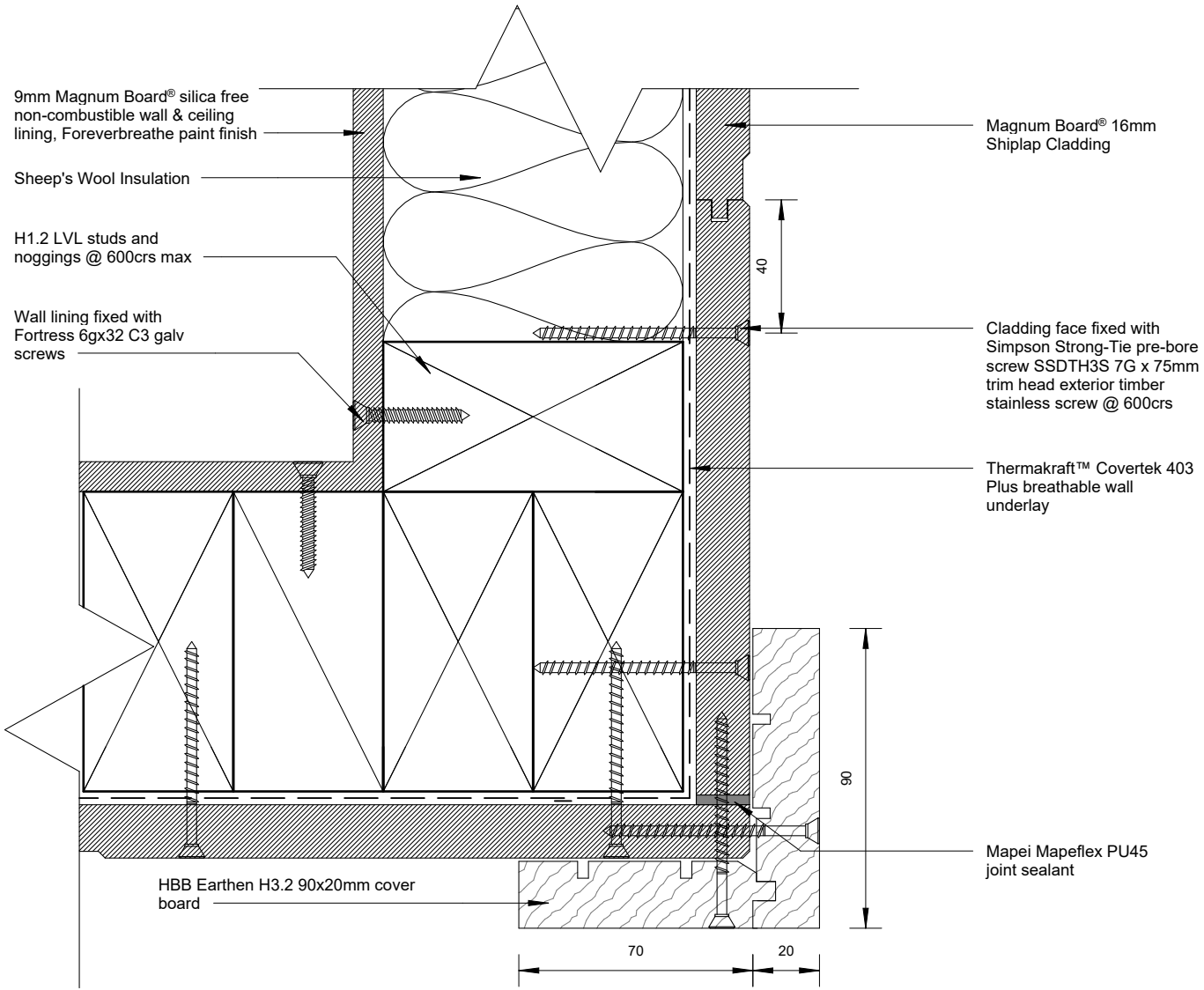


Timber Foundation Detail
1 : 2

26/01/2024 1:13:17 pm



150mm
100
50
0 10mm



External Corner Detail
1 : 2

26/01/2024 1:13:17 pm



150mm
100
50
0 10mm

H1.2 LVL studs and
noggings @ 600crs max

50

50

Wall lining fixed with Fortress
6gx32 C3 galv screws

50x50 uPVC internal corner
flashing

18x18mm min. corner batten with
chamfered rear edge

Mapei Mapeflex PU45
joint sealant

Cladding face fixed with Simpson
Strong-Tie pre-bore screw
SSDTH3S 7G x 75mm trim head
exterior timber stainless screw @
600crs

Thermakraft™ Covertex 403 Plus
breathable wall underlay

9mm Magnum Board® silica
free non-combustible wall &
ceiling lining, Foreverbreathe
paint finish

Magnum Board® 16mm Shiplap
Cladding

Sheep's Wool Insulation

Internal Corner Detail

1 : 2

26/01/2024 1:13:17 pm



4/14

Magnum Board Vertical Shiplap Details

Internal Corner Detail



150mm
100
50
0 10mm

Selected profiled metal roofing
on roofing underlay

Ensure roofing underlay is laid
horizontally and over top of eaves
flashing. Ensure roof fixing does
not penetrate eave flashing

125mm min.-Refer E2/AS1 Fig. 45

Roof structure in
accordance with
NZS3604 or specific
Engineering design

Folded 0.55BMT Prefinished
metal eaves flashing with hem
at top edge

50

Selected spouting

10 mm min gap

Provide solid blocking for fixing

Hardie and Thompson. Earthen®
fascia board

Magnum Board® 9mm silica free
non-combustible soffit lining

HBB Earthen® soffit moulding

Cladding face fixed with Simpson Strong-Tie pre-bore
screw SSDTH3S 7G x 75mm trim head exterior timber
stainless screw @ 600crs

9mm Magnum Board®
silica free non-
combustible wall & ceiling
lining. Foreverbreathe
paint finish

Wall lining fixed with
Fortress 6gx32 C3 galv
screws

H1.2 LVL studs and
noggings @ 600crs

Sheep's Wool Insulation

Magnum Board® 16mm Shiplap
Cladding

Thermakraft™ Covertex 403 Plus
breathable wall underlay

Eave - Section Detail

1 : 5

26/01/2024 1:13:17 pm



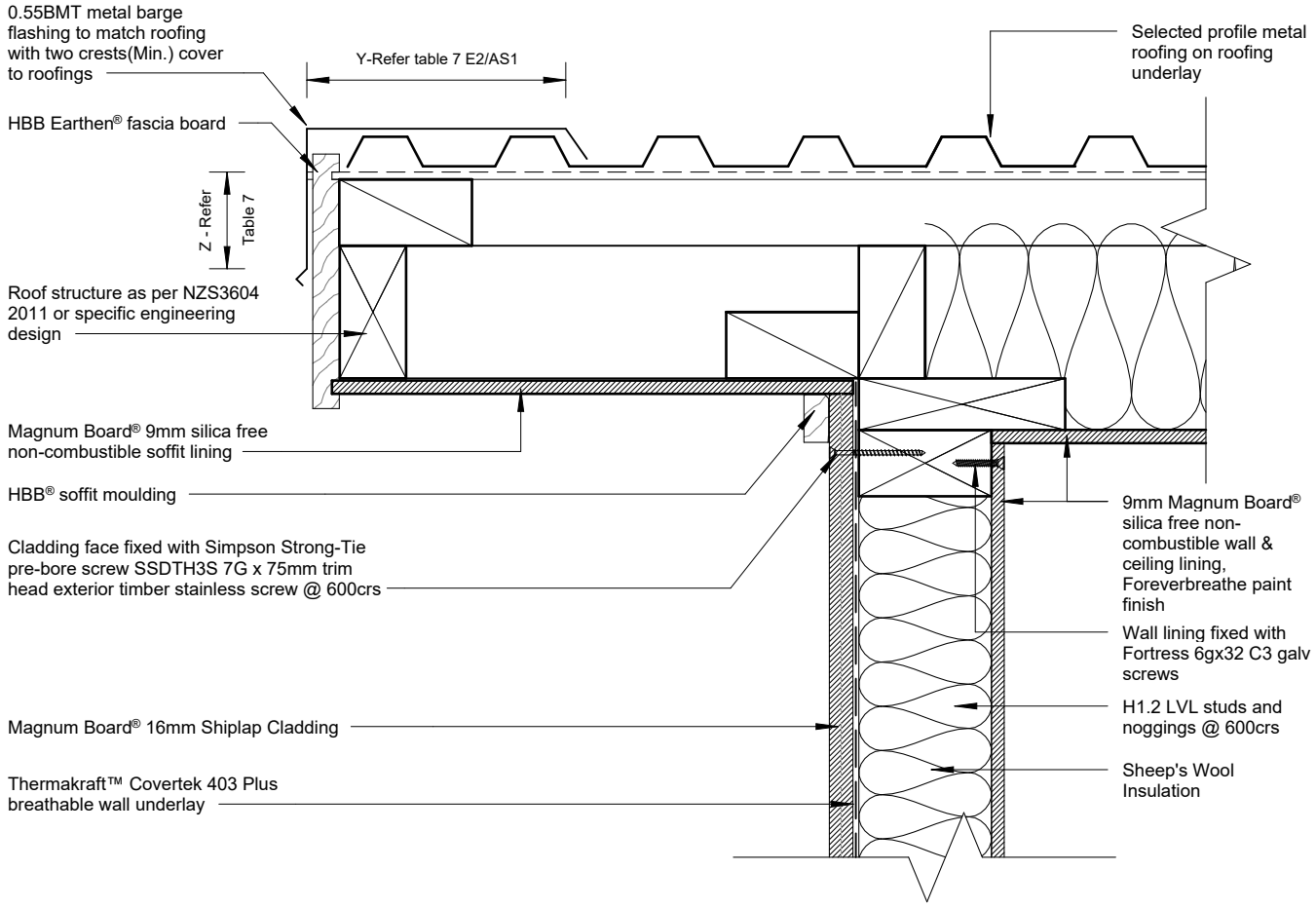
5/14

Magnum Board Vertical Shiplap Details

Eave - Section Detail



150mm
100
50
0 10mm

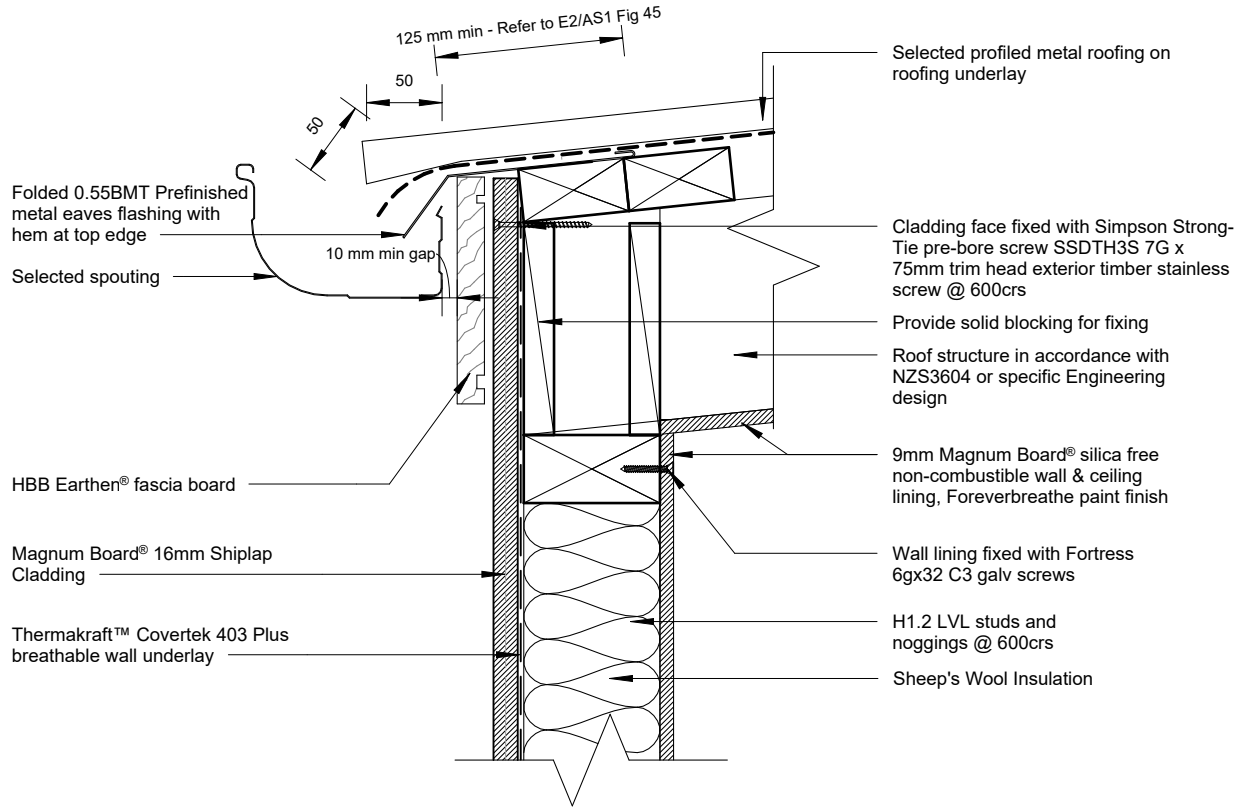


Barge Eave - Section Detail
1 : 5

26/01/2024 1:13:18 pm



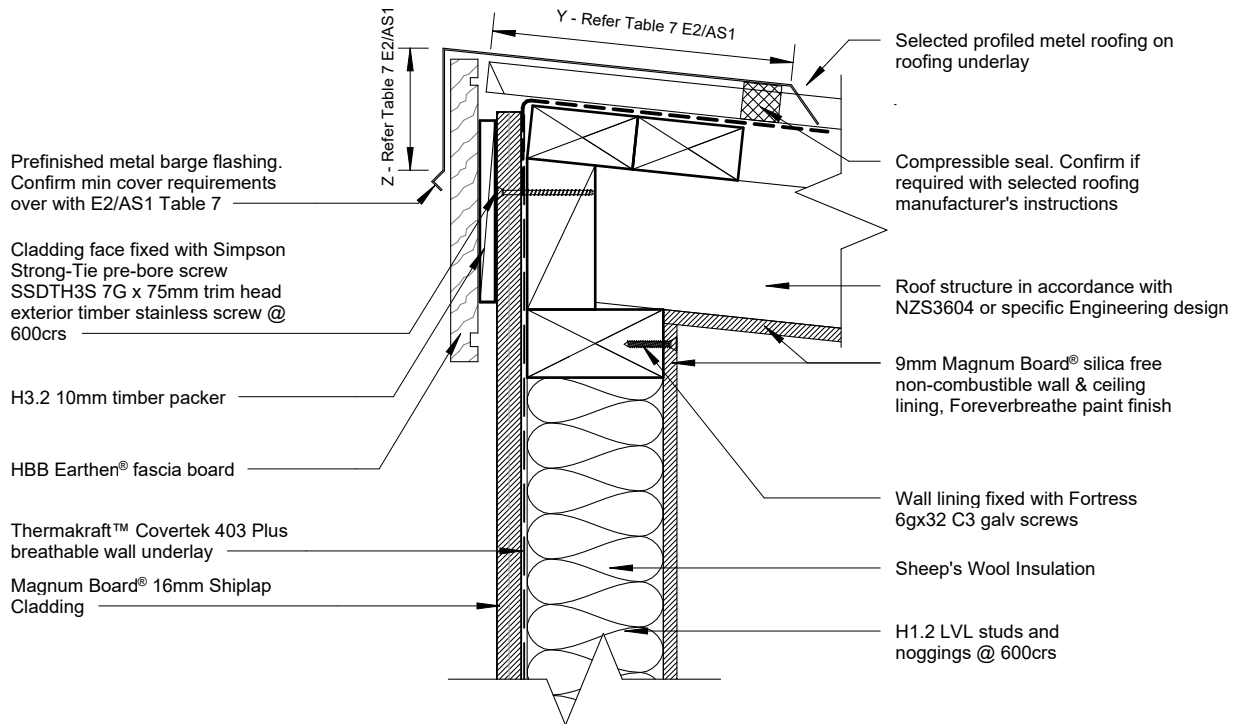
150mm



Barge - No Soffit - Section Detail

1 : 5

100



Roof - Wall ridge - Section Detail

1 : 5

50

10mm

0

26/01/2024 1:13:18 pm



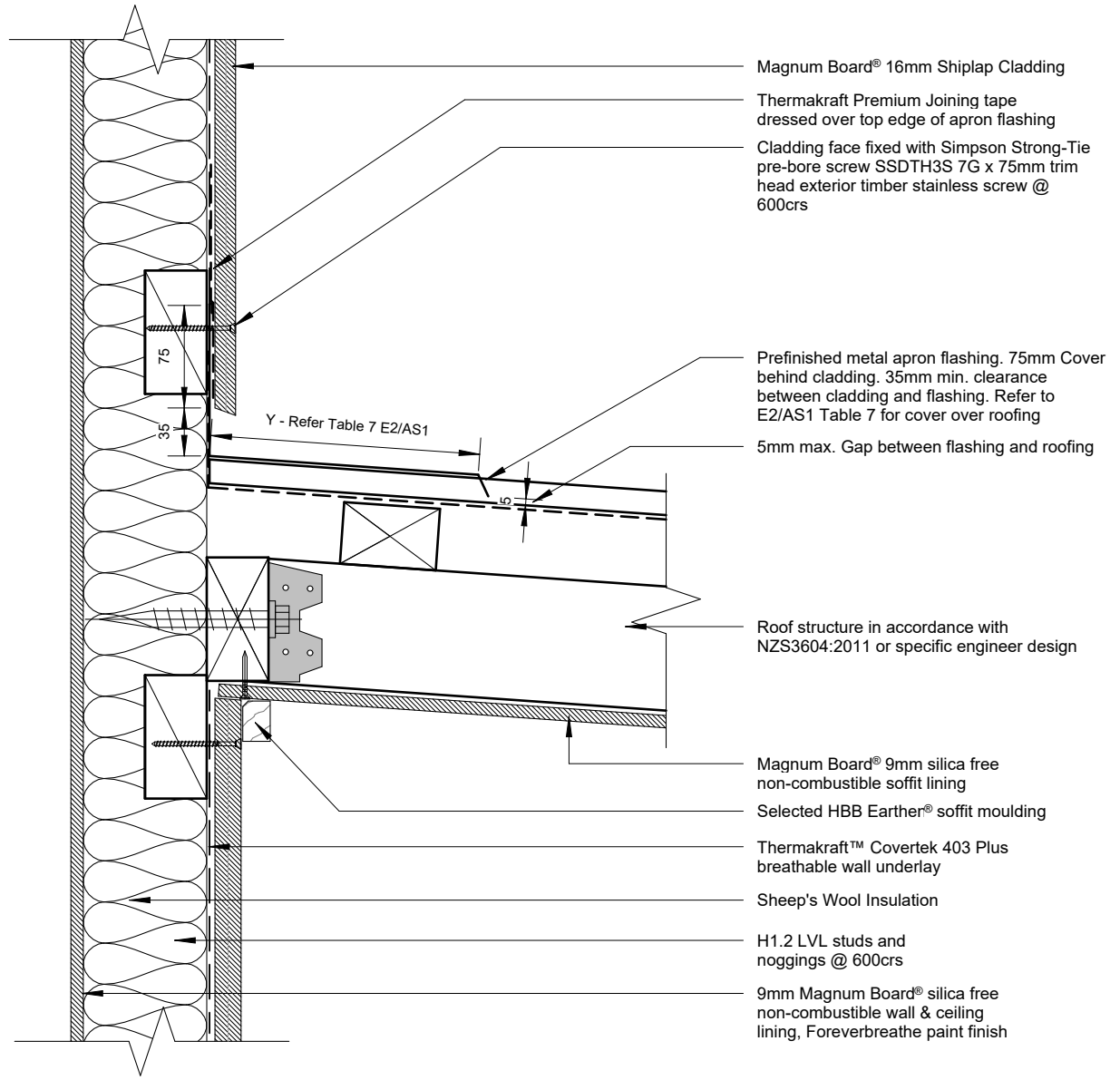
7/14

Magnum Board Vertical Shiplap Details

Roof - Wall Ridge - Section Detail



150mm
100
50
0 10mm



- Magnum Board® 16mm Shiplap Cladding
- Thermakraft Premium Joining tape dressed over top edge of apron flashing
- Cladding face fixed with Simpson Strong-Tie pre-bore screw SSDTH3S 7G x 75mm trim head exterior timber stainless screw @ 600crs
- Prefinished metal apron flashing. 75mm Cover behind cladding. 35mm min. clearance between cladding and flashing. Refer to E2/AS1 Table 7 for cover over roofing
- 5mm max. Gap between flashing and roofing
- Roof structure in accordance with NZS3604:2011 or specific engineer design
- Magnum Board® 9mm silica free non-combustible soffit lining
- Selected HBB Earther® soffit moulding
- Thermakraft™ Covertex 403 Plus breathable wall underlay
- Sheep's Wool Insulation
- H1.2 LVL studs and noggings @ 600crs
- 9mm Magnum Board® silica free non-combustible wall & ceiling lining, Foreverbreathe paint finish

Canopy Junction - Section Detail
1:5

26/01/2024 1:13:18 pm



150mm
100
50
10mm
0

9mm Magnum Board® silica free non-combustible wall & ceiling lining, Foreverbreathe paint finish

Sheep's Wool Insulation

H1.2 LVL studs and noggings @ 600crs

Wall lining fixed with Fortress 6gx32 C3 galv screws

H1.2 Bottom plate

Floor joists refer to plan

35mm min cover flashing over cladding.

H1.2 Top plate

Magnum Board® 16mm Shiplap Cladding

Thermakraft Premium Joining tape dressed over top edge of horizontal Z-flashing

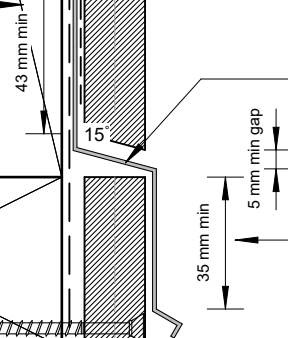
Cladding face fixed with Simpson Strong-Tie pre-bore screw SSDTH3S 7G x 75mm trim head exterior timber stainless screw @ 600crs

Pre-finished metal, purpose made flashing. 15° min slope. Refer to table 20 of E2/AS1 for flashing durability

Gap between the end cut of Magnum Board® 16mm Shiplap Cladding to top of the flashing

35mm min cover flashing over cladding.

Thermakraft™ Covertek 403 Plus breathable wall underlay



Vertical Detail - Horizontal Control Joint

1 : 2

26/01/2024 1:13:18 pm

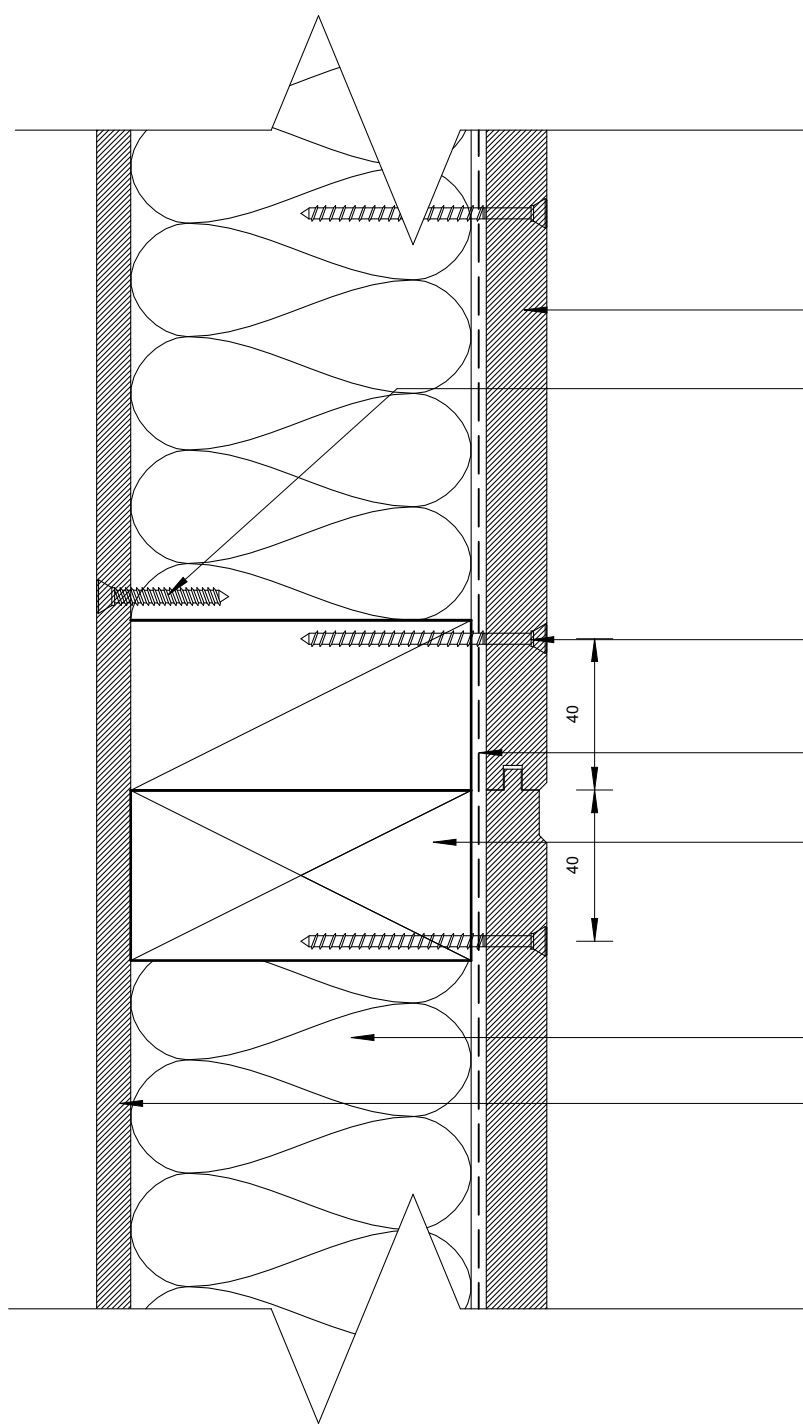


9/14

Magnum Board Vertical Shiplap Details
Horizontal Control Joint



150mm
100
50
0 10mm



Magnum Board® 16mm Shiplap Cladding

Wall lining fixed with Fortress 6x32 C3 galv screws

Cladding face fixed with Simpson Strong-Tie pre-bore screw SSDTH3S 7G x 75mm trim head exterior timber stainless screw @ 600crs

Thermakraft™ Covertek 403 Plus breathable wall underlay

H1.2 LVL studs and noggings @ 600crs

Sheep's Wool Insulation

9mm Magnum Board® silica free non-combustible wall & ceiling lining, Foreverbreathe paint finish

Plan Detail - Vertical Control Joint
1:2

26/01/2024 1:13:18 pm



10/14

Magnum Board Vertical Shiplap Details
Plan Detail - Vertical Control Joint



150mm

100

50

10mm

0

Magnum Board® 16mm Shiplap Cladding

Thermakraft™ Covertex 403 Plus
breathable wall underlay

Cladding face fixed with Simpson Strong-Tie
pre-bore screw SSDTH3S 7G x 75mm trim
head exterior timber stainless screw @
600crs

35mm min. Flashing upstand behind
cladding, and 10mm min. cover over joinery

Gap between the head sill and the end cut
of Magnum Board® 16mm Shiplap
Cladding

Selected aluminium joinery

H1.2 LVL studs and
noggings @ 600crs

Sheep's Wool Insulation

9mm Magnum Board® silica free
non-combustible wall & ceiling
lining, Foreverbreathe paint finish

Thermakraft Premium Joining tape
dressed over top edge of head flashing

H1.2 Lintel refer to plan

Thermaflash flashing tape dressed into opening
and 50mm over face of rigid air barrier

Continuous PEF backing rod to
perimeter of opening

H3.2 packing

Selected Foreverbeec® timber reveal

Typical Head - Section Detail

1 : 5

Selected aluminium joinery

Sill flashing to extend behind line of
aluminium frame, with 8mm min. upstand to
back and sloping end dams.

Cladding face fixed with Simpson Strong-Tie
pre-bore screw SSDTH3S 7G x 75mm trim
head exterior timber stainless screw @
600crs

Thermakraft™ Covertex 403 Plus
breathable wall underlay

Magnum Board® 16mm Shiplap
Cladding

HBB Earthen® timber reveal

Continuous PEF backing rod to
perimeter of opening

H3.2 packer

Wall lining fixed with Fortress 6gx32 C3 galv screws

Thermaflash flashing tape dressed into opening
and 50mm over face of rigid air barrier

H1.2 LVL studs and
noggings @ 600crs

9mm Magnum Board® silica free
non-combustible wall & ceiling
lining, Foreverbreathe paint finish

Sheep's Wool Insulation

Typical Sill - Section Detail

1 : 5

26/01/2024 1:13:18 pm



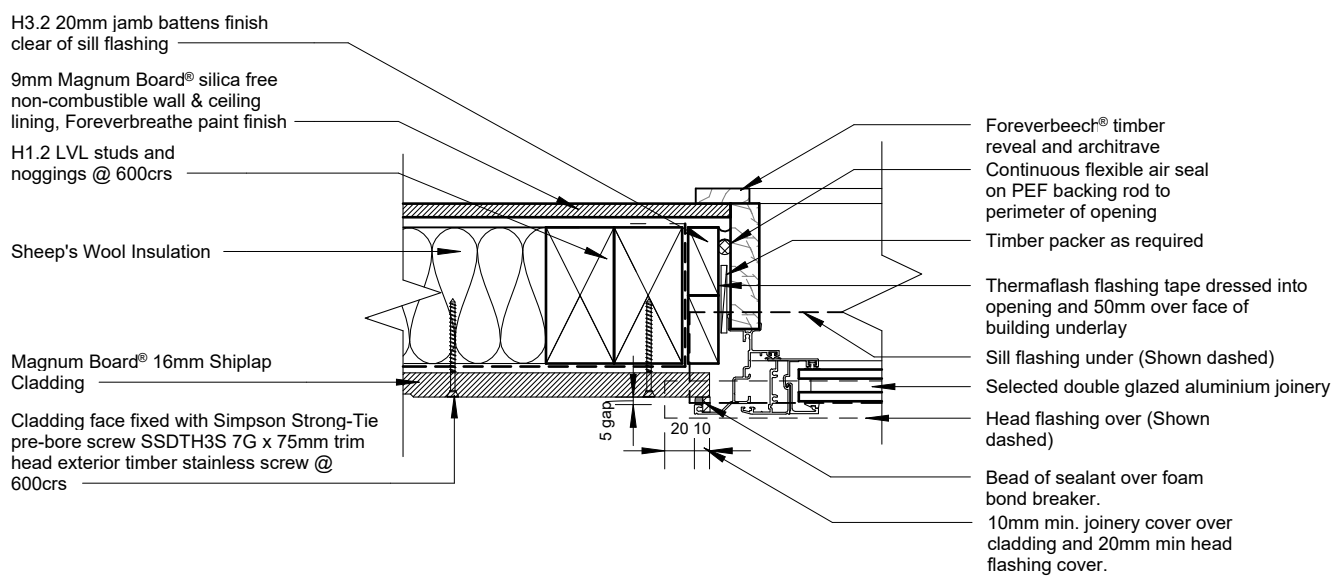
11/14

Magnum Board Vertical Shiplap Details

Typical Head and Sill Detail



150mm
100
50
0 10mm



DO NOT FIX THROUGH JAMB FLASHING

Typical Jamb - Plan Detail
1 : 5

26/01/2024 1:13:18 pm



12/14
Magnum Board Vertical Shiplap Details
Typical Jamb - Plan Detail



150mm
100
50
0 10mm

Thermaflash flashing tape dressed into opening and 50mm over face of rigid air barrier

Continuous PEF backing rod to perimeter of opening

Magnum Board® 18mm silica free non-combustible flooring

H1.2 LVL timber joist, refer to drawings

Sheep's Wool Insulation

12mm gap between stringer and cladding/joinery

Decking as per drawings, joist sizes and fixings in accordance with NZS3604:2011

Deck stringer and fixings in accordance with NZS3604:2011 or specific engineering design

Thermakraft™ Covertek 403 Plus breathable wall underlay

H3.2 treated timber support

Cladding face fixed with Simpson Strong-Tie pre-bore screw SSDTH3S 7G x 75mm trim head exterior timber stainless screw @ 600crs

Magnum Board® 16mm Shiplap Cladding

Deck Threshold Detail

1:2

26/01/2024 1:13:19 pm



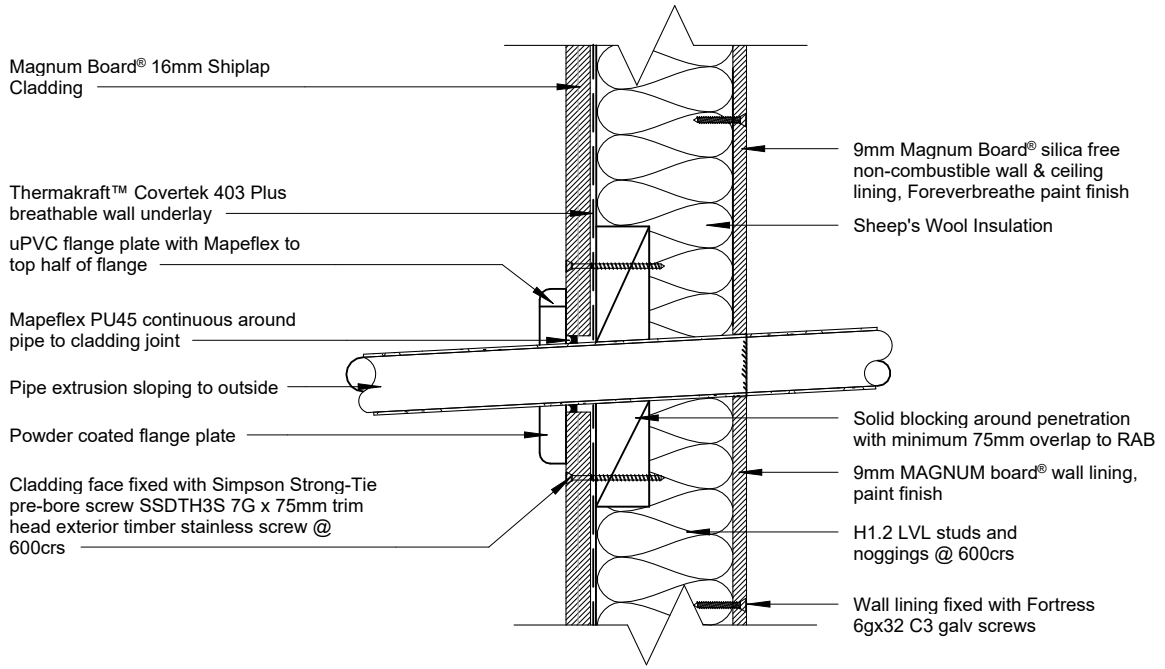
13/14

Magnum Board Vertical Shiplap Details

Deck Threshold Detail

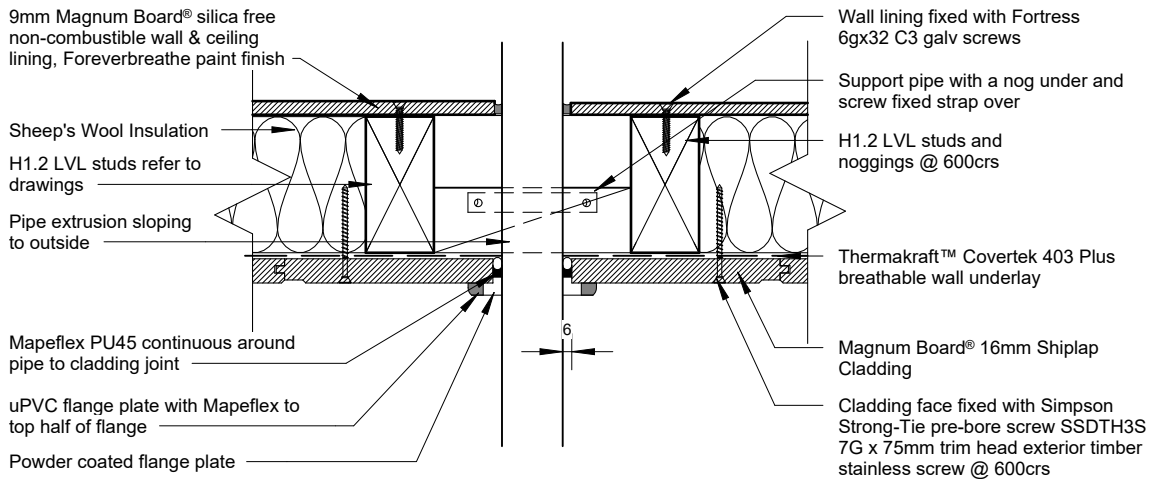


150mm
100
50
10mm
0



Pipe Penetration - Section Detail

1 : 5



Pipe Penetration - Plan Detail

1 : 5

14/14

Magnum Board Vertical Shiplap Details
Pipe Penetration - Plan & Section Detail



26/01/2024 1:13:19 pm