



Make your space, a healthy place.

www.healthbasedbuilding.com

Health Based Building

Magnum Board 16mm Weatherboard Cavity & Direct Fix

Sheet List		
Sheet Number	Sheet Name	Current Revision
000	Cover Sheet	
1/30	Concrete Foundation Detail	
2/30	Timber Foundation Detail	
3/30	External Corner Detail	
4/30	External Corner Detail	
5/30	Internal Corner Detail	
6/30	Internal Corner Detail	
7/30	Eave - Section Detail	
8/30	Barge - Section Detail	
9/30	Roof - Wall Ridge - Section Detail	
10/30	Canopy Junction - Section Detail	
11/30	Horizontal Control Joint	
12/30	Vertical Joint On Stud	
13/30	Typical Head and Sill Detail	
14/30	Typical Jamb Detail	
15/30	Deck Threshold Detail	
16/30	Pipe Penetration - Plan & Section Detail	
17/30	Concrete Foundation Detail (Cavity)	
18/30	Timber Foundation Detail (Cavity)	
19/30	External Boxed Corner Detail (Cavity)	
20/30	Internal Corner Detail (Cavity)	
21/30	Eave Section Detail (Cavity)	
22/30	Barge - Section Detail (Cavity)	
23/30	Roof - Wall Ridge - Section Detail (Cavity)	
24/30	Canopy Junction - Section Detail (Cavity)	
25/30	Horizontal Control Joint Detail (Cavity)	
26/30	Vertical Control Joint Detail (Cavity)	
27/30	Typical Head and Sill Detail (Cavity)	
28/30	Typical Jamb Detail (Cavity)	
29/30	Pipe Penetration - Plan & Section Detail (Cavity)	
30/30	Typical Door/Window Opening	

150mm

100

50

10mm

13/12/2019 2:58:58 PM



000

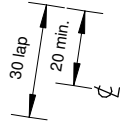
Health Based Building Magnum Board 16mm Weatherboard Direct Fix

Cover Sheet



150mm
100
50
10mm
0

16mm Magnum Board® bevel-back weatherboard - allow for 150mm cover plus 30mm lap with Foreverbreathe Silicate paint finish.



Fixing, selection as below

Thermakraft™ Covertek 403 Plus breathable wall underlay

PVC starter strip - located to allow maximum weatherboard overhang of 20mm

50mm min cover

Interior wall lining

Timber or LVL wall framing, minimum 35mm wide studs at 600crs max

Exterior wall insulation to NZBC H1/AS1

Selected skirting

Concrete floor slab, refer to drawings

DPC between all timber and concrete

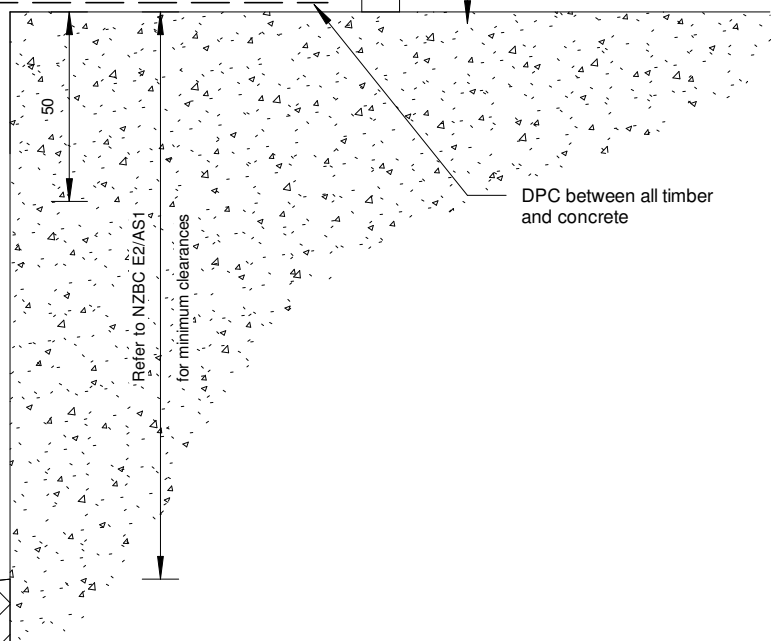
FIXING OPTIONS

Nail fixing (50 x 2.5-2.8mm round head SS coil or cassette nail)

or

Screw fixing (Simpson Strong-Tie CBSDG158SA)

NOTE: For screw-fixing, pre-drill with 5mm Ø drill and countersink bit to prevent splitting.



Concrete Foundation Detail

1 : 2

13/12/2019 2:58:58 PM



150mm
100
50
10mm
0

Timber or LVL wall framing,
minimum 35mm wide studs at
600crs max

16mm Magnum Board® bevel-back
weatherboard - allow for 150mm
cover plus 30mm lap with
Foreverbreath Silicate paint finish.

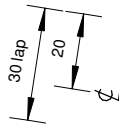
Thermakraft™ Covertek 403 Plus
breathable wall underlay

Fixing, selection as below

Timber joist, refer to drawings

FIXING OPTIONS

Nail fixing (50 x 2.5-2.8mm round head SS coil or
cassette nail)
or
Screw fixing (Simpson Strong-Tie CBSDG158SA)
*NOTE: For screw-fixing, pre-drill with 5mm Ø drill
and countersink bit to prevent splitting.*



PVC starter strip - located to allow
maximum weatherboard overhang of
20mm

20-50 overhang

Interior wall lining
Selected skirting.
Exterior wall insulation to
NZBC H1/AS1
Selected flooring, refer to
drawings

Timber Foundation Detail

1 : 2

13/12/2019 2:58:58 PM



2/30

Health Based Building Magnum Board 16mm Weatherboard Direct Fix

Timber Foundation Detail



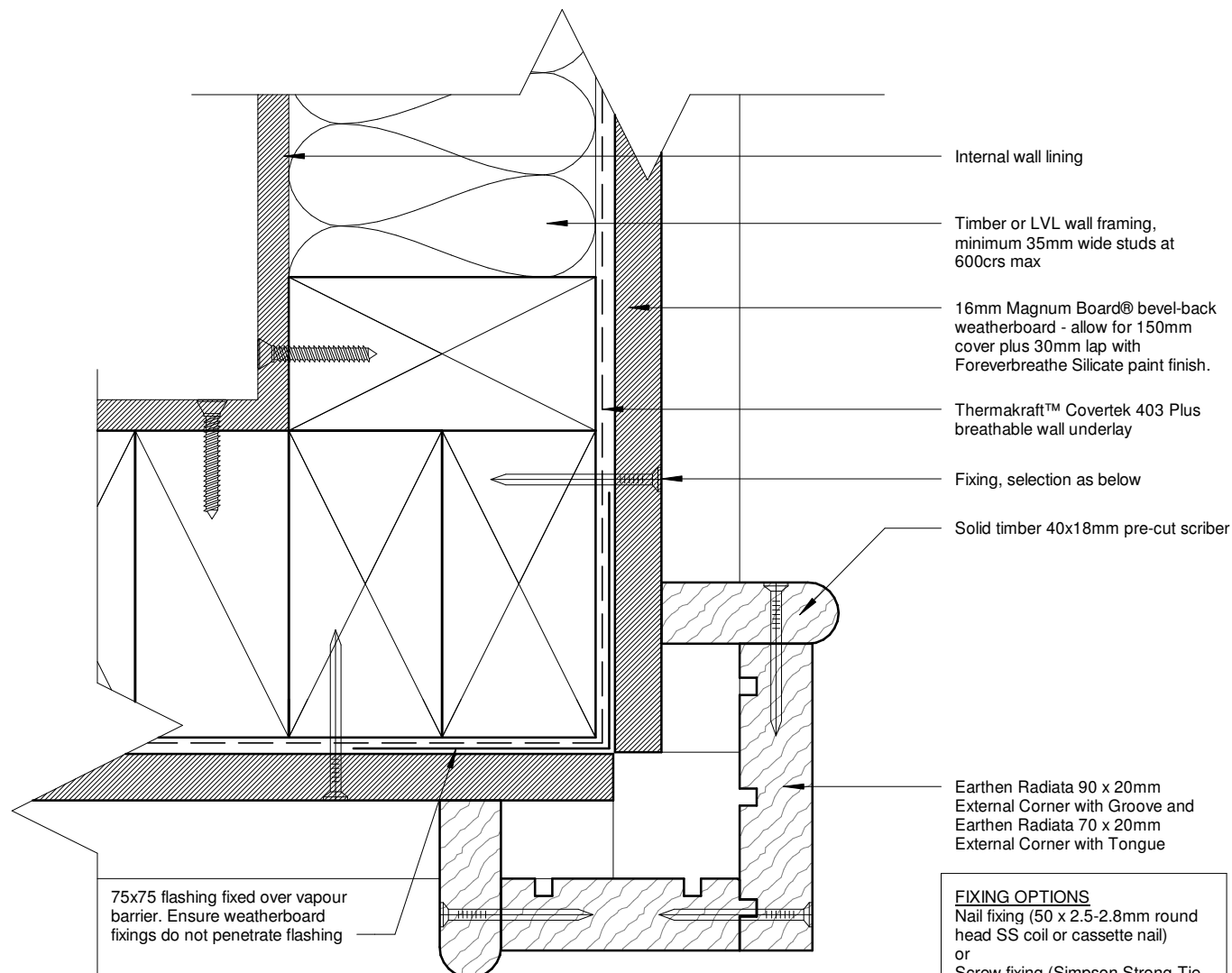
150mm

100

50

10mm

0



- Internal wall lining
- Timber or LVL wall framing, minimum 35mm wide studs at 600crs max
- 16mm Magnum Board® bevel-back weatherboard - allow for 150mm cover plus 30mm lap with Foreverbreath Silicate paint finish.
- Thermakraft™ Covertek 403 Plus breathable wall underlay
- Fixing, selection as below
- Solid timber 40x18mm pre-cut scribe
- Earthen Radiata 90 x 20mm External Corner with Groove and Earthen Radiata 70 x 20mm External Corner with Tongue

75x75 flashing fixed over vapour barrier. Ensure weatherboard fixings do not penetrate flashing

FIXING OPTIONS
 Nail fixing (50 x 2.5-2.8mm round head SS coil or cassette nail)
 or
 Screw fixing (Simpson Strong-Tie CBSDG158SA)
NOTE: For screw-fixing, pre-drill with 5mm Ø drill and countersink bit to prevent splitting.

External Corner Boxed Detail
 1 : 2

13/12/2019 2:58:59 PM



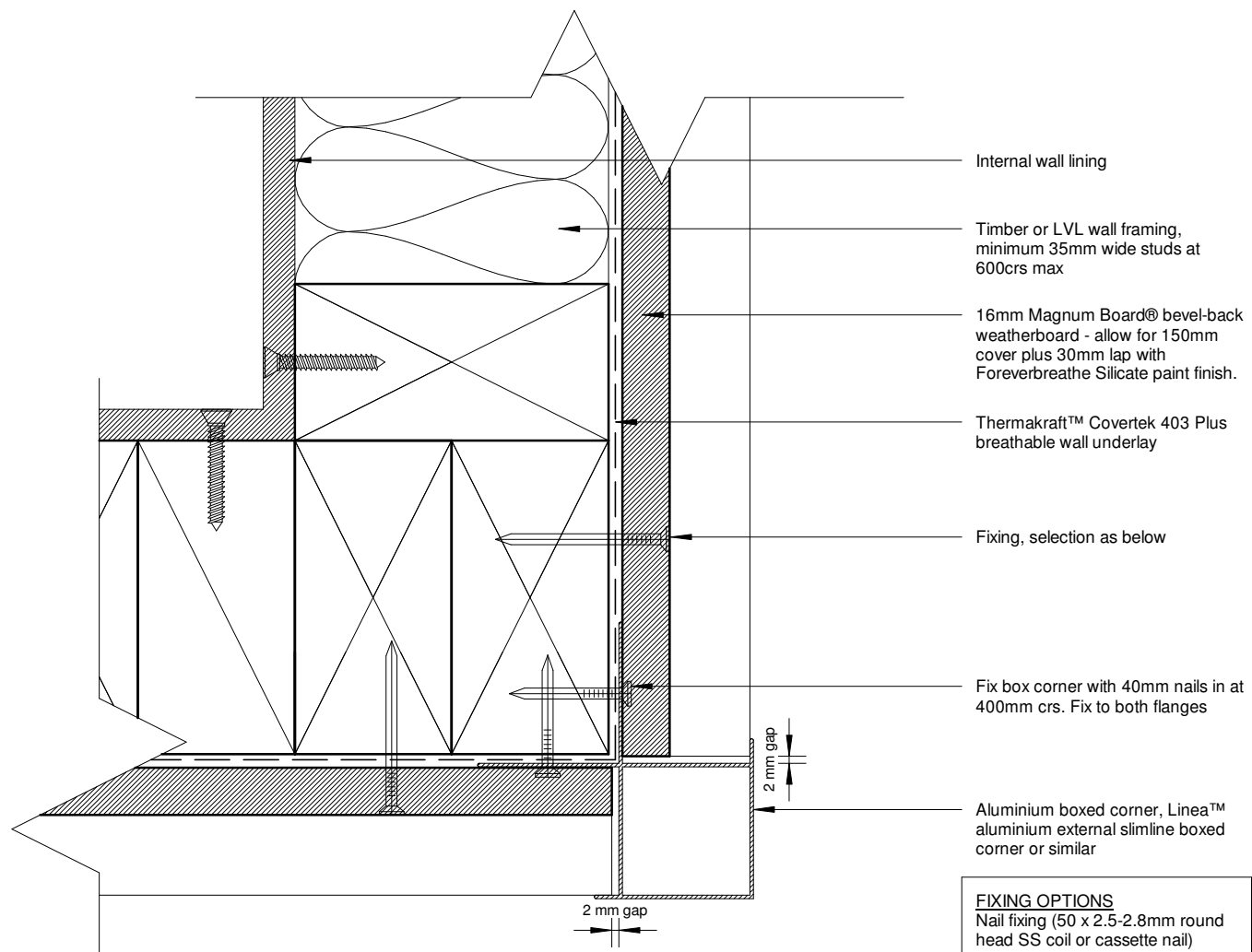
150mm

100

50

10mm

0



- Internal wall lining
- Timber or LVL wall framing, minimum 35mm wide studs at 600crs max
- 16mm Magnum Board® bevel-back weatherboard - allow for 150mm cover plus 30mm lap with Foreverbreathe Silicate paint finish.
- Thermakraft™ Covertek 403 Plus breathable wall underlay
- Fixing, selection as below
- Fix box corner with 40mm nails in at 400mm crs. Fix to both flanges
- Aluminium boxed corner, Linea™ aluminium external slimline boxed corner or similar

FIXING OPTIONS
 Nail fixing (50 x 2.5-2.8mm round head SS coil or cassette nail)
 or
 Screw fixing (Simpson Strong-Tie CBSDG158SA)
NOTE: For screw-fixing, pre-drill with 5mm Ø drill and countersink bit to prevent splitting.

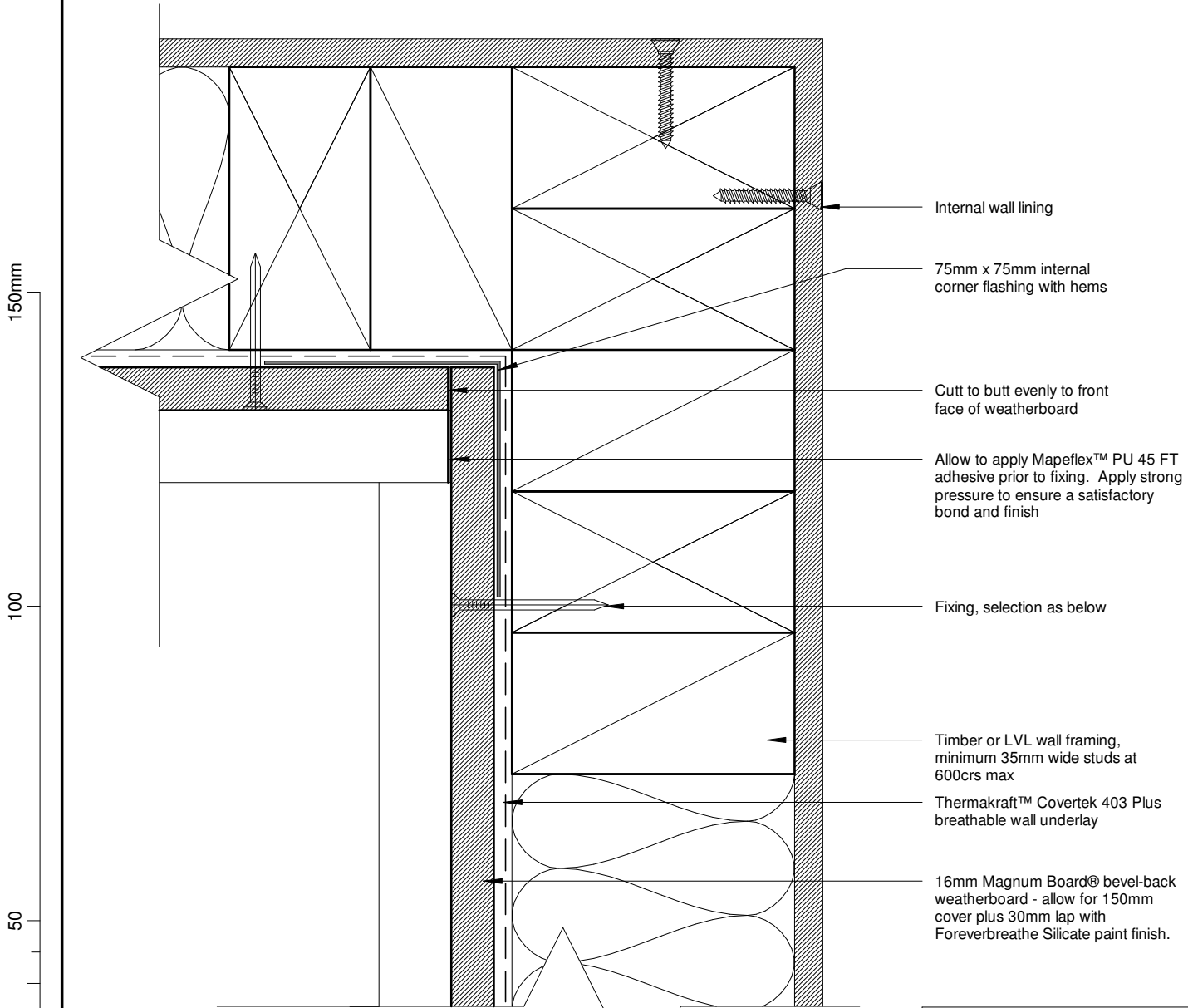
External Corner Aluminium Box Detail

1 : 2

13/12/2019 2:58:59 PM



NOTE: Respiratory and Eye Protection
Refer to Section 8 when cutting, sanding,
or drilling Magnum Board®.



- Internal wall lining
- 75mm x 75mm internal corner flashing with hems
- Cutt to butt evenly to front face of weatherboard
- Allow to apply Mapeflex™ PU 45 FT adhesive prior to fixing. Apply strong pressure to ensure a satisfactory bond and finish
- Fixing, selection as below
- Timber or LVL wall framing, minimum 35mm wide studs at 600cra max
- Thermakraft™ Covertek 403 Plus breathable wall underlay
- 16mm Magnum Board® bevel-back weatherboard - allow for 150mm cover plus 30mm lap with Foreverbreathe Silicate paint finish.

Internal Corner Detail
1 : 2

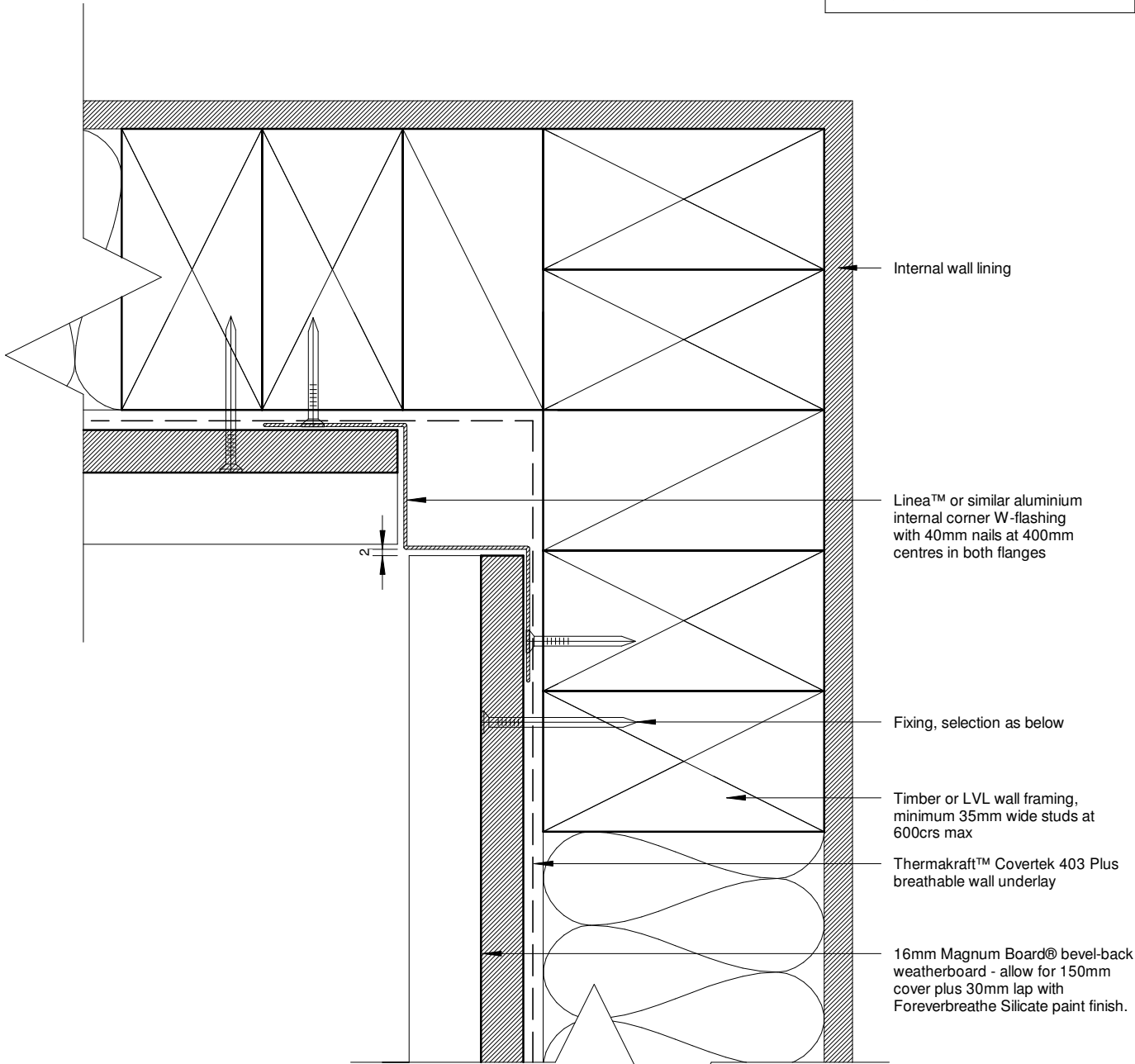
FIXING OPTIONS
Nail fixing (50 x 2.5-2.8mm round head SS coil or cassette nail)
or
Screw fixing (Simpson Strong-Tie CBSDG158SA)
NOTE: For screw-fixing, pre-drill with 5mm Ø drill and countersink bit to prevent splitting.

13/12/2019 2:58:59 PM



NOTE: Respiratory and Eye Protection
Refer to Section 8 when cutting, sanding,
or drilling Magnum Board®.

150mm
100
50
0 10mm



- Internal wall lining
- Linea™ or similar aluminium internal corner W-flashing with 40mm nails at 400mm centres in both flanges
- Fixing, selection as below
- Timber or LVL wall framing, minimum 35mm wide studs at 600cmax
- Thermakraft™ Covertek 403 Plus breathable wall underlay
- 16mm Magnum Board® bevel-back weatherboard - allow for 150mm cover plus 30mm lap with Foreverbreathe Silicate paint finish.

Internal W-Corner Detail

1 : 2

FIXING OPTIONS
Nail fixing (50 x 2.5-2.8mm round head SS coil or cassette nail)
or
Screw fixing (Simpson Strong-Tie CBSDG158SA)
NOTE: For screw-fixing, pre-drill with 5mm Ø drill and countersink bit to prevent splitting.

13/12/2019 2:58:59 PM



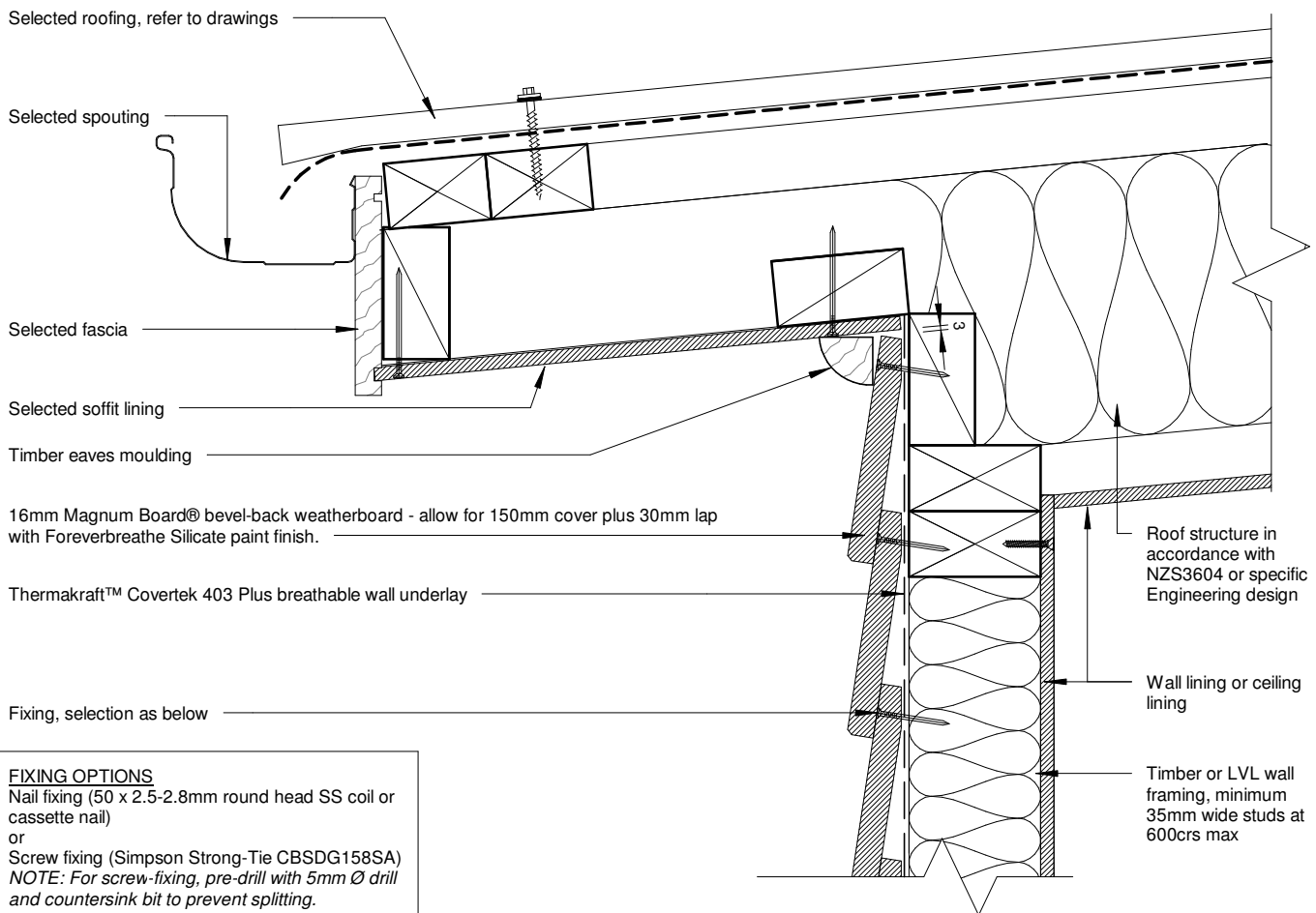
150mm

100

50

10mm

0



FIXING OPTIONS
 Nail fixing (50 x 2.5-2.8mm round head SS coil or cassette nail)
 or
 Screw fixing (Simpson Strong-Tie CBSDG158SA)
NOTE: For screw-fixing, pre-drill with 5mm Ø drill and countersink bit to prevent splitting.

Eave - Section Detail

1 : 5

13/12/2019 2:58:59 PM



7/30

Health Based Building Magnum Board 16mm Weatherboard Direct Fix

Eave - Section Detail



150mm

100

50

10mm

0

Y-Refer table 7 E2/AS1

Selected roofing, refer to drawings

Selected fascia

Selected soffit lining

Timber eaves moulding

16mm Magnum Board® bevel-back weatherboard - allow for 150mm cover plus 30mm lap with Foreverbreathe Silicate paint finish.

Thermakraft™ Covertex 403 Plus breathable wall underlay

Fixing, selection as below

Roof structure in accordance with NZS3604 or specific Engineering design

Wall lining, ceiling lining

Timber or LVL wall framing, minimum 35mm wide studs at 600crs max

FIXING OPTIONS
 Nail fixing (50 x 2.5-2.8mm round head SS coil or cassette nail)
 or
 Screw fixing (Simpson Strong-Tie CBSDG158SA)
 NOTE: For screw-fixing, pre-drill with 5mm Ø drill and countersink bit to prevent splitting.

Barge - Sectional Detail
 1 : 5

13/12/2019 2:58:59 PM



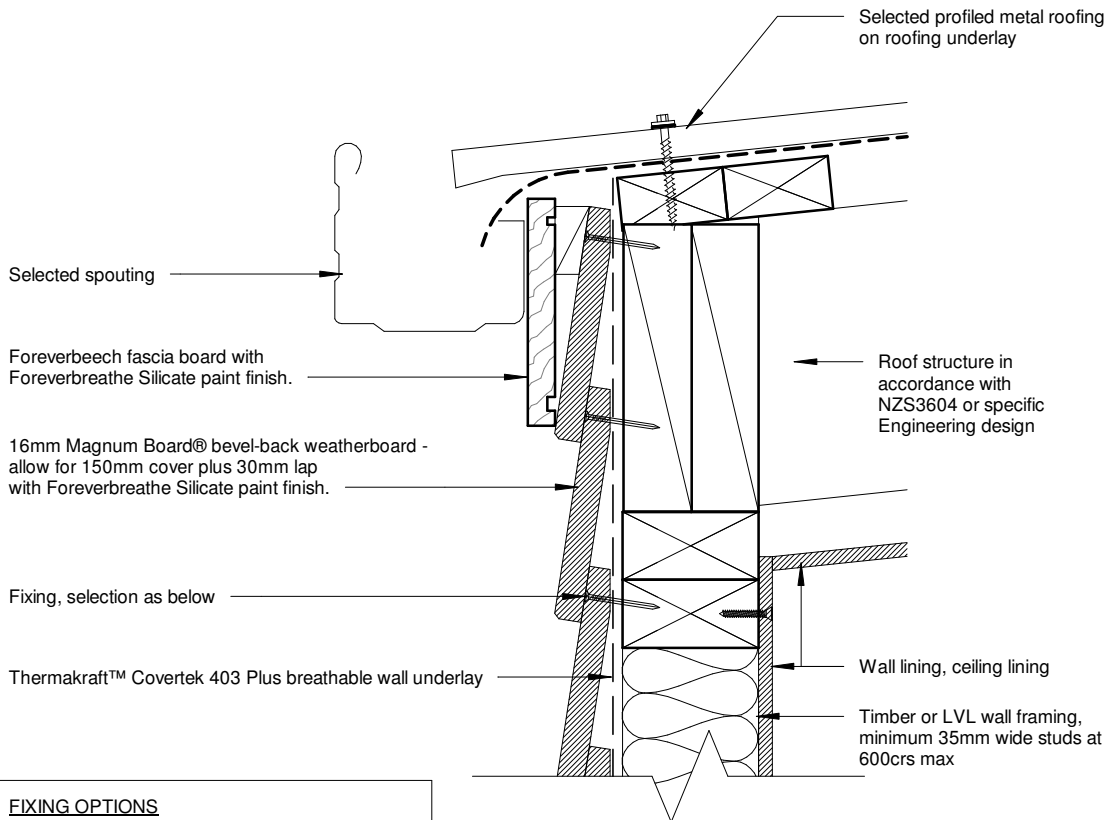
150mm

100

50

10mm

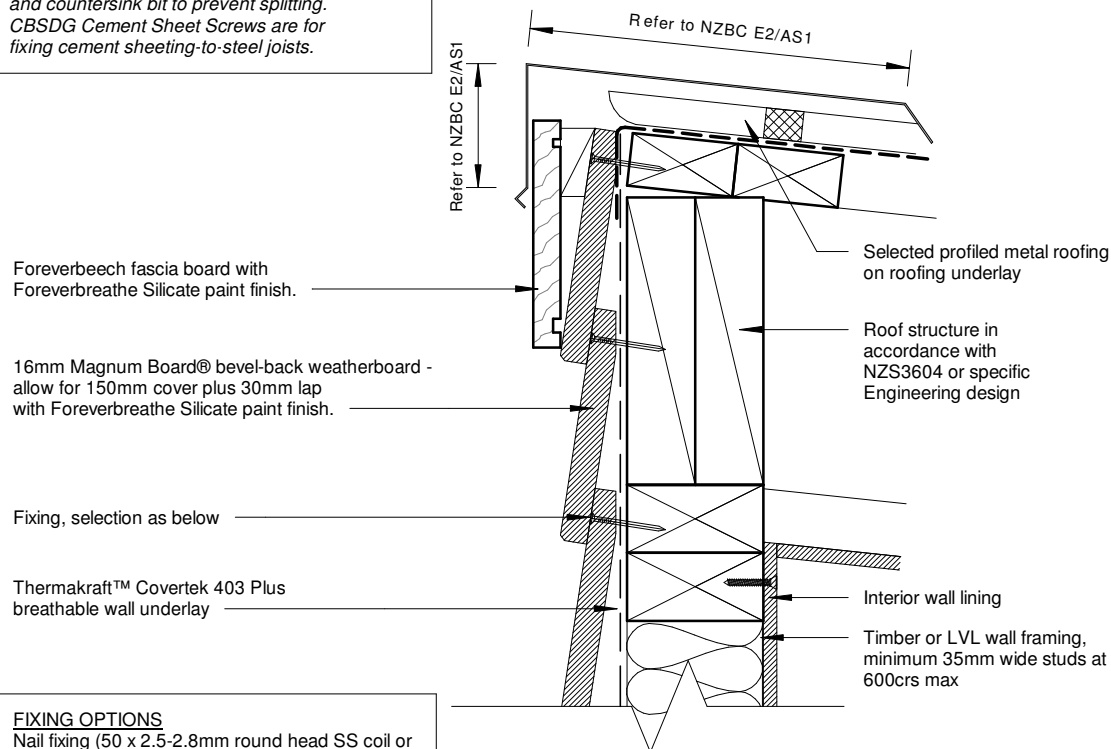
0



FIXING OPTIONS
 Nail fixing (50 x 2.5-2.8mm round head SS coil or cassette nail)
 or
 Screw fixing (Simpson Strong-Tie CBSDG158SA)
 NOTE: For screw-fixing, pre-drill with 5mm Ø drill and countersink bit to prevent splitting.
 CBSDG Cement Sheet Screws are for fixing cement sheeting-to-steel joists.

Barge - No Soffit Detail

1 : 5



FIXING OPTIONS
 Nail fixing (50 x 2.5-2.8mm round head SS coil or cassette nail)
 or
 Screw fixing (Simpson Strong-Tie CBSDG158SA)
 NOTE: For screw-fixing, pre-drill with 5mm Ø drill and countersink bit to prevent splitting.

Roof - Wall Ridge - Section Detail

1 : 5

13/12/2019 2:58:59 PM

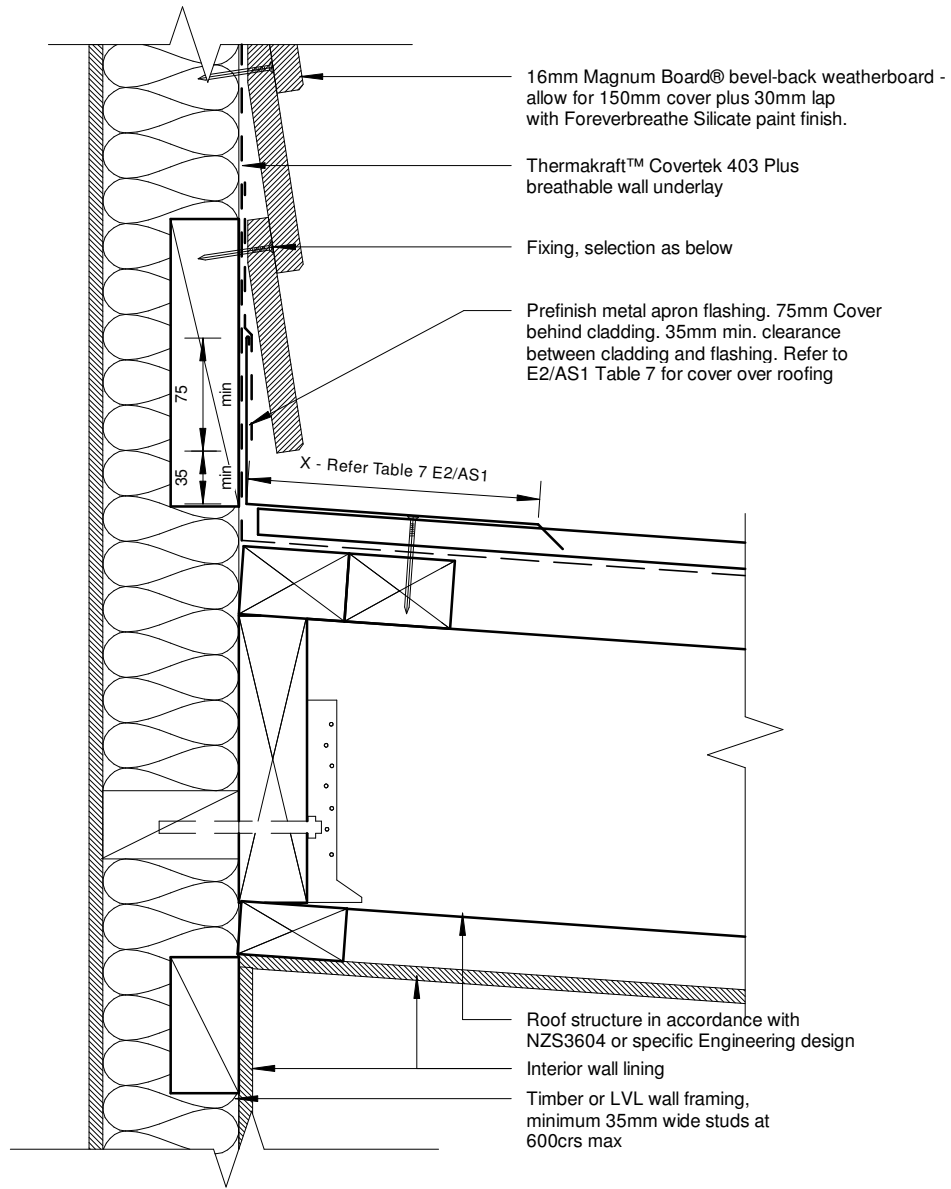


9/30

Health Based Building Magnum Board 16mm Weatherboard Direct Fix

Roof - Wall Ridge - Section Detail





150mm

100

50

0 10mm

FIXING OPTIONS
 Nail fixing (50 x 2.5-2.8mm round head SS coil or cassette nail)
 or
 Screw fixing (Simpson Strong-Tie CBSDG158SA)
NOTE: For screw-fixing, pre-drill with 5mm Ø drill and countersink bit to prevent splitting.

Canopy Junction - Section Detail
 1 : 5

13/12/2019 2:58:59 PM



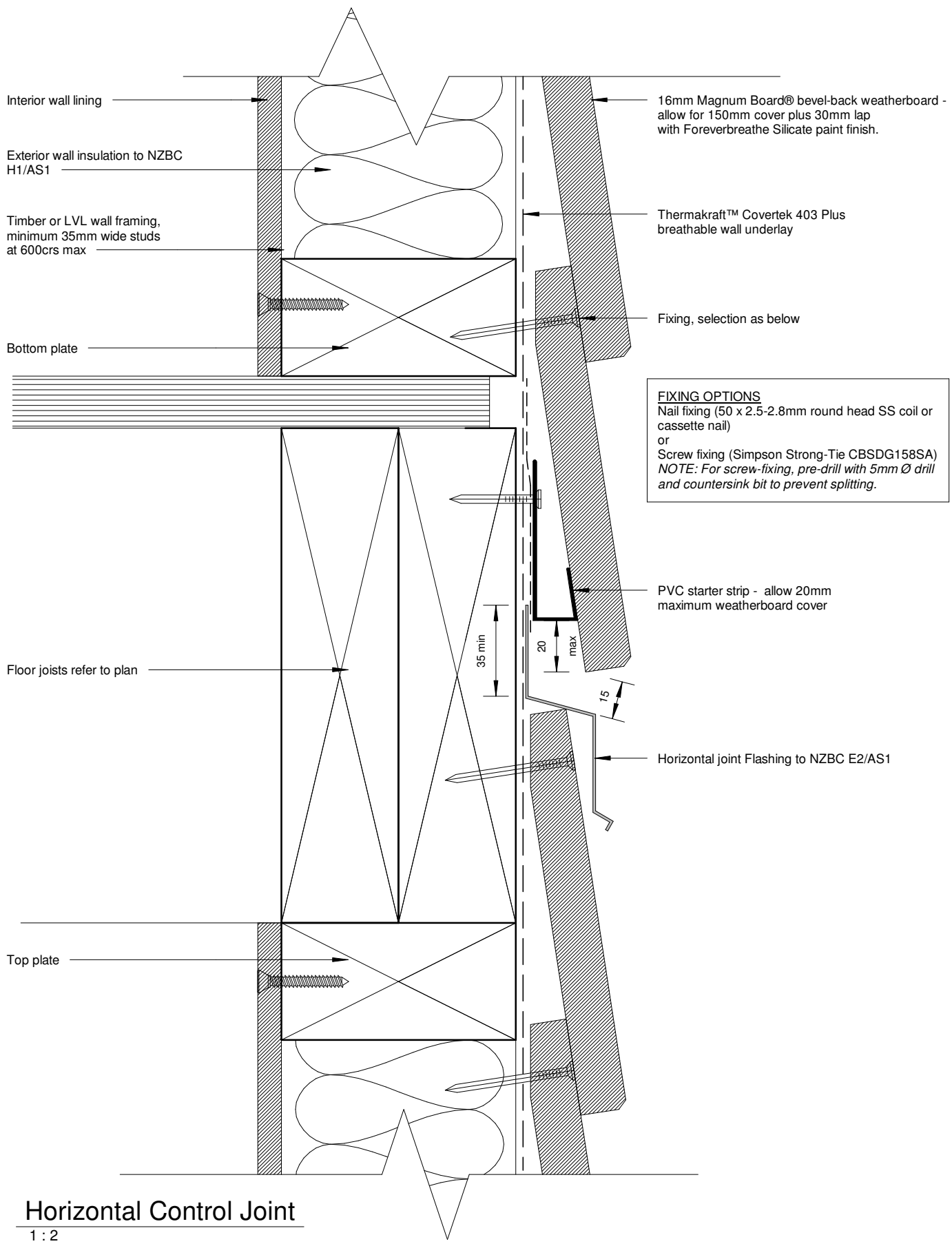
10/30

Health Based Building Magnum Board 16mm Weatherboard Direct Fix

Canopy Junction - Section Detail



150mm
100
50
0 10mm



FIXING OPTIONS
 Nail fixing (50 x 2.5-2.8mm round head SS coil or cassette nail)
 or
 Screw fixing (Simpson Strong-Tie CBSDG158SA)
 NOTE: For screw-fixing, pre-drill with 5mm Ø drill and countersink bit to prevent splitting.

Horizontal Control Joint
1 : 2

13/12/2019 2:58:59 PM



11/30
 Health Based Building Magnum Board 16mm Weatherboard Direct Fix
 Horizontal Control Joint



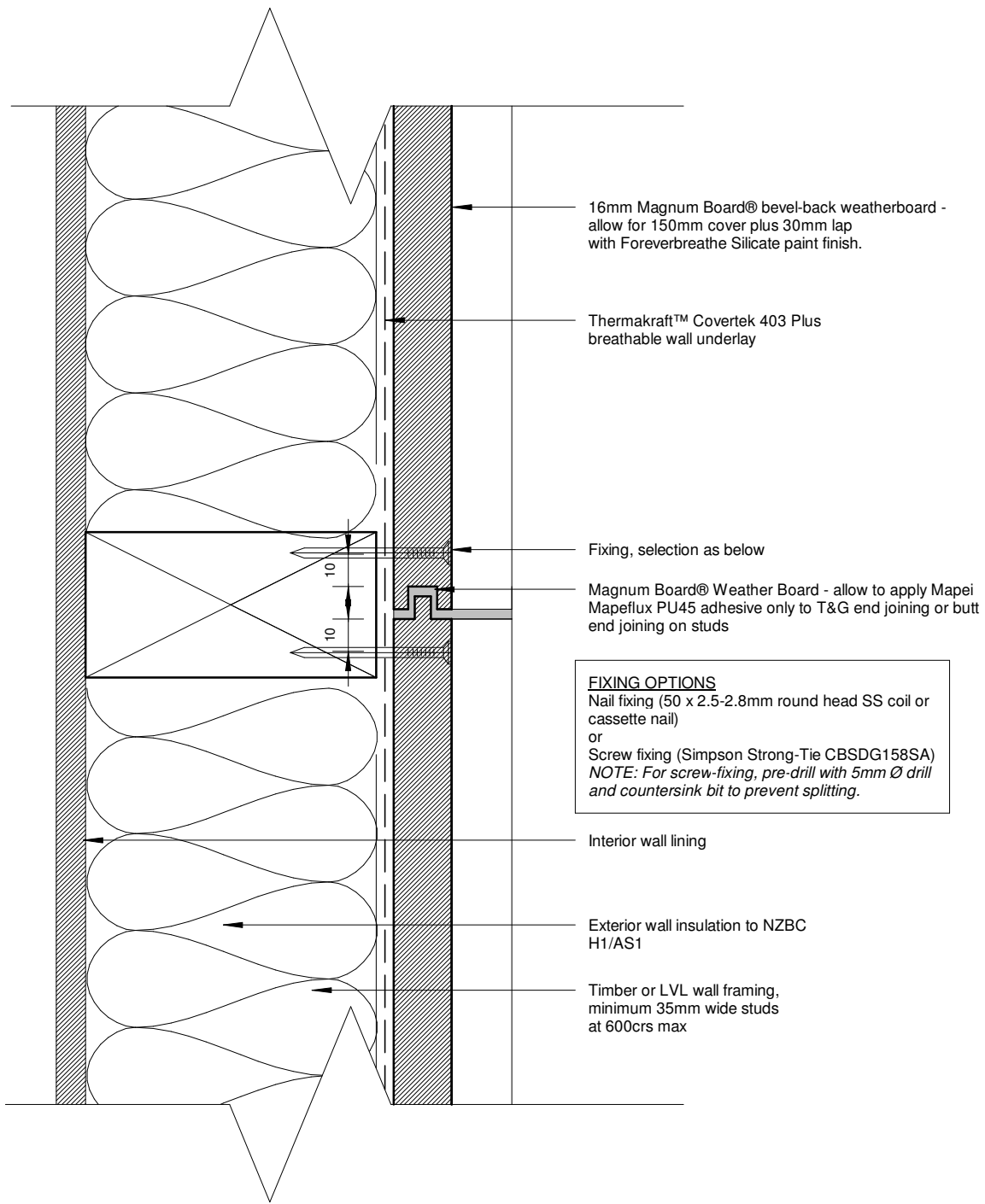
150mm

100

50

10mm

0



Vertical Joint on Stud

1 : 2

13/12/2019 2:58:59 PM



12/30

Health Based Building Magnum Board 16mm Weatherboard Direct Fix

Vertical Joint On Stud



150mm

16mm Magnum Board® bevel-back weatherboard - allow for 150mm cover plus 30mm lap with Foreverbreath Silicate paint finish.

Fixing, selection as below

Thermakraft™ Covertek 403 Plus breathable wall underlay

Head flashing to NZBC E2/AS1

Selected aluminium joinery

Interior wall lining

Exterior wall insulation to NZBC H1/AS1

Timber or LVL wall framing, minimum 35mm wide studs at 600crs max

10mm Gap nominal to allow for head deflection and air seal

Continuous flexible air seal on PEF backing rod to perimeter of opening

Temporary packers if required are to be removed after fixing

FIXING OPTIONS
 Nail fixing (50 x 2.5-2.8mm round head SS coil or cassette nail)
 or
 Screw fixing (Simpson Strong-Tie CBSDG158SA)
 NOTE: For screw-fixing, pre-drill with 5mm Ø drill and countersink bit to prevent splitting.

Typical Head Detail

1 : 5

100

Selected aluminium joinery

Sill flashing to extend behind line of aluminium frame, with 8mm min. upstand and stop ends.

Flashing to NZBC E2/AS1

16mm Magnum Board® bevel-back weatherboard - allow for 150mm cover plus 30mm lap with Foreverbreath Silicate paint finish.

Thermakraft™ Covertek 403 Plus breathable wall underlay

Fixing, selection as below

Continuous flexible air seal on PEF backing rod to perimeter of opening

10mm nominal gap

Packer to suit

Frame block

Interior wall lining

Exterior wall insulation to NZBC H1/AS1

Timber or LVL wall framing, minimum 35mm wide studs at 600crs max

FIXING OPTIONS
 Nail fixing (50 x 2.5-2.8mm round head SS coil or cassette nail)
 or
 Screw fixing (Simpson Strong-Tie CBSDG158SA)
 NOTE: For screw-fixing, pre-drill with 5mm Ø drill and countersink bit to prevent splitting.

Typical Sill Detail

1 : 5

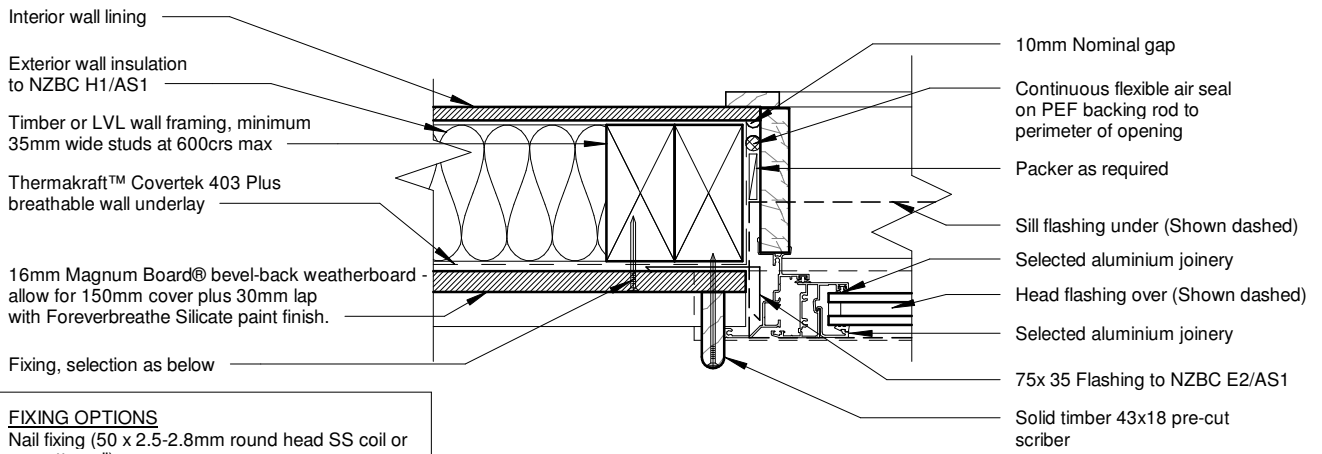
50

10mm

0

13/12/2019 2:58:59 PM





FIXING OPTIONS
 Nail fixing (50 x 2.5-2.8mm round head SS coil or cassette nail)
 or
 Screw fixing (Simpson Strong-Tie CBSDG158SA)
 NOTE: For screw-fixing, pre-drill with 5mm Ø drill and countersink bit to prevent splitting.

Typical Jamb Detail
 1 : 5



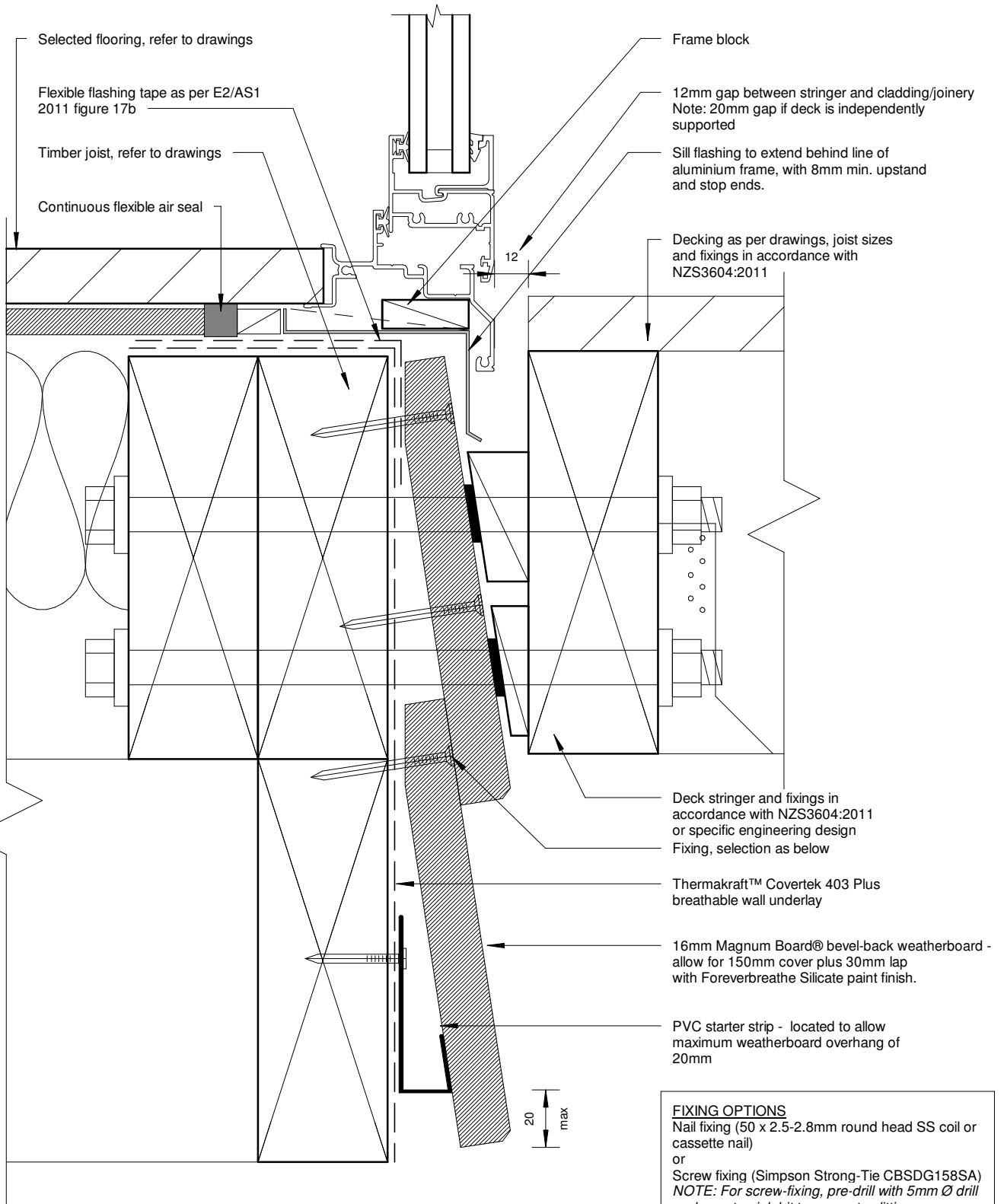
13/12/2019 2:58:59 PM



14/30
 Health Based Building Magnum Board 16mm Weatherboard Direct Fix
 Typical Jamb Detail



150mm
100
50
0 10mm



Deck Threshold Detail
1 : 2

FIXING OPTIONS
Nail fixing (50 x 2.5-2.8mm round head SS coil or cassette nail)
or
Screw fixing (Simpson Strong-Tie CBSDG158SA)
NOTE: For screw-fixing, pre-drill with 5mm Ø drill and countersink bit to prevent splitting.

13/12/2019 2:58:59 PM



16mm Magnum Board® bevel-back weatherboard - allow for 150mm cover plus 30mm lap with Foreverbreathe Silicate paint finish.

Thermakraft™ Covertex 403 Plus breathable wall underlay

Clear MS sealant to top half of flange

Powder coated flange plate

Clear MS sealant 10mm wide x 6mm deep sealant on bond breaker see E2/AS1 FIG 68 of flange

Fixing, selection as below

Proprietary EPDM penetration seal, installed to manufacturer specifications

Pipe penetration sloping to outside

Solid blocking around penetration with minimum 75mm overlap to wrap

Internal wall lining

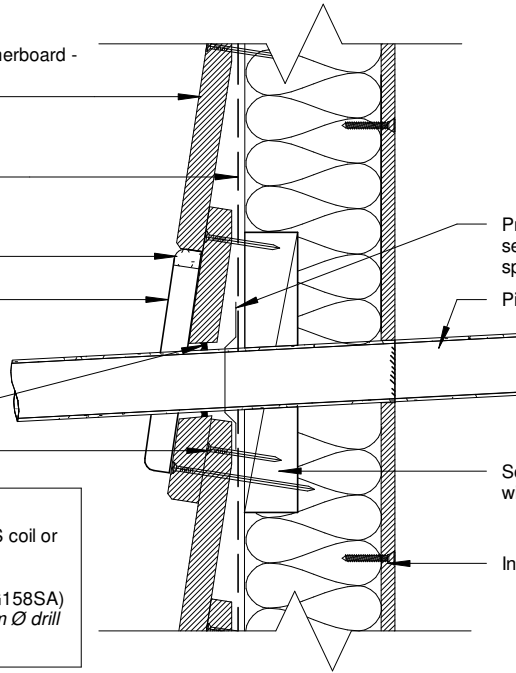
FIXING OPTIONS

Nail fixing (50 x 2.5-2.8mm round head SS coil or cassette nail)

or

Screw fixing (Simpson Strong-Tie CBSDG158SA)

NOTE: For screw-fixing, pre-drill with 5mm Ø drill and countersink bit to prevent splitting.



Pipe Penetration Section Detail

1 : 5

150mm

100

50

10mm

0

Thermakraft™ Covertex 403 Plus breathable wall underlay

Fixing, selection as below

Clear MS sealant to top half of flange

Powdercoated aluminium flange plate

Internal wall lining

Support pipe with a nog under and screw fixed strap over

Vanluk rubber boot with adhesive collar. Refer to www.vanluk.co.nz

16mm Magnum Board® bevel-back weatherboard - allow for 150mm cover plus 30mm lap with Foreverbreathe Silicate paint finish.

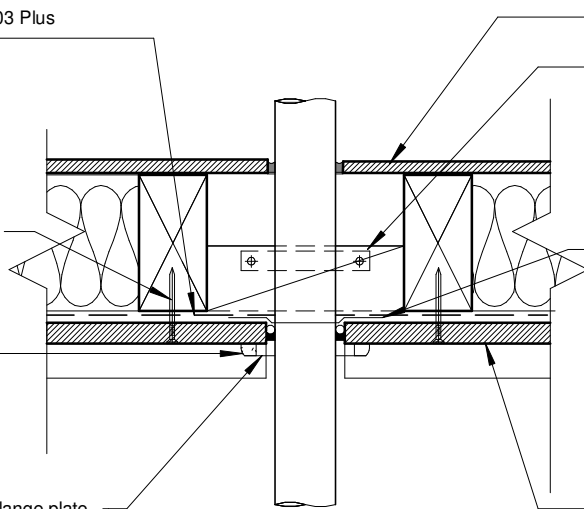
FIXING OPTIONS

Nail fixing (50 x 2.5-2.8mm round head SS coil or cassette nail)

or

Screw fixing (Simpson Strong-Tie CBSDG158SA)

NOTE: For screw-fixing, pre-drill with 5mm Ø drill and countersink bit to prevent splitting.



Pipe Penetration Plan Detail

1 : 5

16/30

Health Based Building Magnum Board 16mm Weatherboard Direct Fix

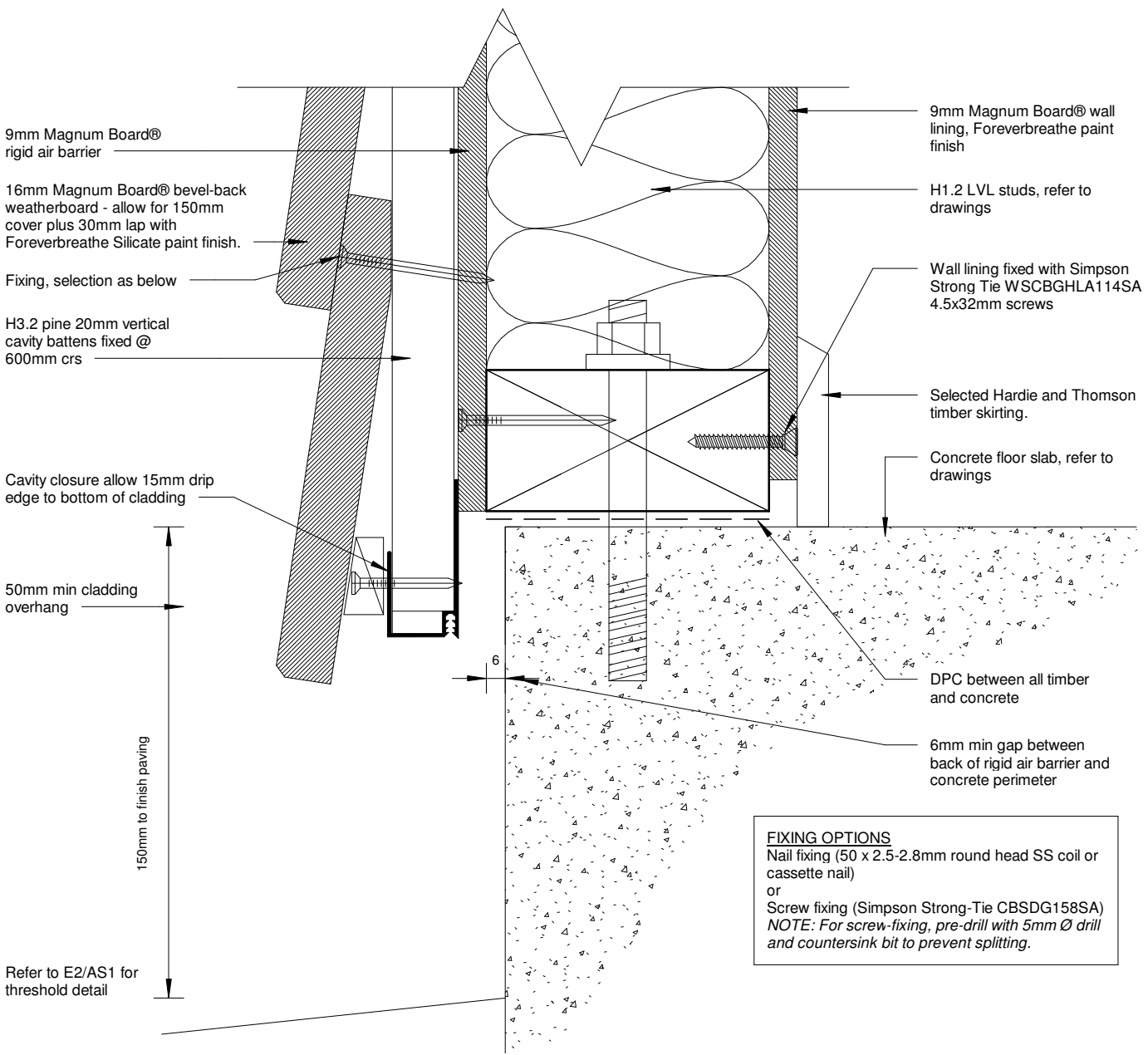
Pipe Penetration - Plan & Section Detail



13/12/2019 2:59:00 PM



150mm
100
50
0 10mm



9mm Magnum Board® rigid air barrier

16mm Magnum Board® bevel-back weatherboard - allow for 150mm cover plus 30mm lap with Foreverbreathe Silicate paint finish.

Fixing, selection as below

H3.2 pine 20mm vertical cavity battens fixed @ 600mm crs

9mm Magnum Board® wall lining, Foreverbreathe paint finish

H1.2 LVL studs, refer to drawings

Wall lining fixed with Simpson Strong Tie WSCBGHLA114SA 4.5x32mm screws

Selected Hardie and Thomson timber skirting.

Concrete floor slab, refer to drawings

Cavity closure allow 15mm drip edge to bottom of cladding

50mm min cladding overhang

150mm to finish paving

Refer to E2/AS1 for threshold detail

FIXING OPTIONS
 Nail fixing (50 x 2.5-2.8mm round head SS coil or cassette nail)
 or
 Screw fixing (Simpson Strong-Tie CBSDG158SA)
 NOTE: For screw-fixing, pre-drill with 5mm Ø drill and countersink bit to prevent splitting.

Concrete Foundation Cavity Detail
1 : 2

13/12/2019 2:59:00 PM



17/30
 Health Based Building Magnum Board 16mm Weatherboard
 Concrete Foundation Detail (Cavity)



150mm

100

50

10mm

0

9mm Magnum Board® rigid air barrier, Foreverbreathe paint

H1.2 LVL studs, refer to drawings

H3.2 pine 20mm vertical cavity battens fixed @ 600mm crs

'Z' flashing at Magnum Board® rigid air barrier joint, for where sheet lengths exceed 2.4 or 2.7m

H1.2 LVL timber joist, refer to drawings

16mm Magnum Board® bevel-back weatherboard - allow for 150mm cover plus 30mm lap with Foreverbreathe Silicate paint finish.

Rigid air barrier fixings: Paslode Impulse 65x2.8mm SS round drive nails. Refer to Magnum Board® rigid air barrier technical manual specifications and fixing installation diagram.

Cavity closure allow 15mm drip edge to bottom of cladding

9mm Magnum Board® wall lining, Foreverbreathe paint finish

Selected Hardie and Thomson timber skirting.

Wall lining fixed with Simpson Strong Tie WSCBGHLA114SA 4.5x32mm screws

9mm Magnum Board® rigid air barrier

Selected flooring, refer to drawings

50

Timber Foundation Cavity Detail

1 : 2

13/12/2019 2:59:00 PM



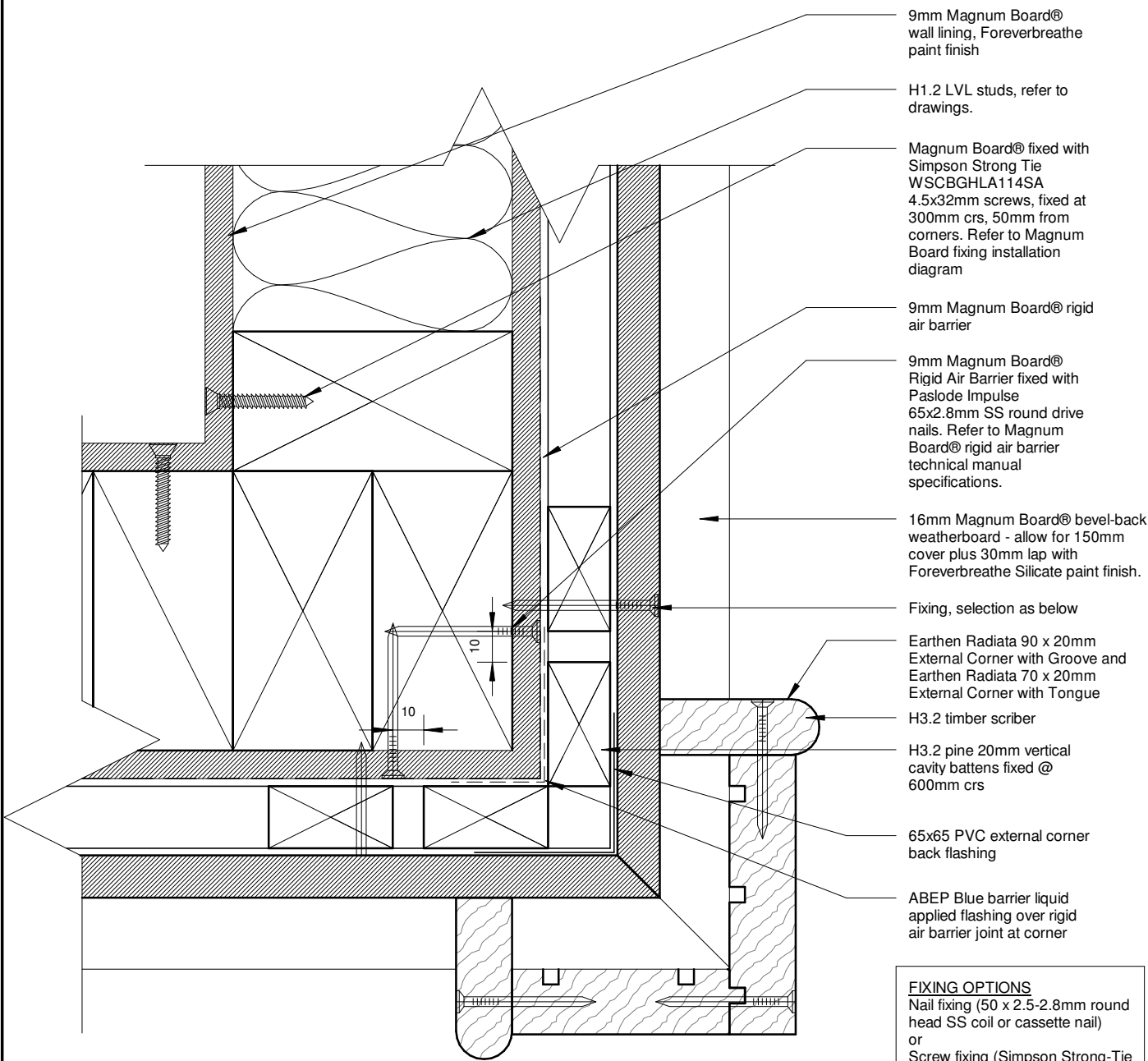
18/30

Health Based Building Magnum Board 16mm Weatherboard

Timber Foundation Detail (Cavity)



150mm
100
50
0 10mm



- 9mm Magnum Board® wall lining, Foreverbreathe paint finish
- H1.2 LVL studs, refer to drawings.
- Magnum Board® fixed with Simpson Strong Tie WSCBGHLA114SA 4.5x32mm screws, fixed at 300mm crs, 50mm from corners. Refer to Magnum Board fixing installation diagram
- 9mm Magnum Board® rigid air barrier
- 9mm Magnum Board® Rigid Air Barrier fixed with Paslode Impulse 65x2.8mm SS round drive nails. Refer to Magnum Board® rigid air barrier technical manual specifications.
- 16mm Magnum Board® bevel-back weatherboard - allow for 150mm cover plus 30mm lap with Foreverbreathe Silicate paint finish.
- Fixing, selection as below
- Earthen Radiata 90 x 20mm External Corner with Groove and Earthen Radiata 70 x 20mm External Corner with Tongue
- H3.2 timber scribe
- H3.2 pine 20mm vertical cavity battens fixed @ 600mm crs
- 65x65 PVC external corner back flashing
- ABEP Blue barrier liquid applied flashing over rigid air barrier joint at corner

FIXING OPTIONS
 Nail fixing (50 x 2.5-2.8mm round head SS coil or cassette nail)
 or
 Screw fixing (Simpson Strong-Tie CBSDG158SA)
NOTE: For screw-fixing, pre-drill with 5mm Ø drill and countersink bit to prevent splitting.

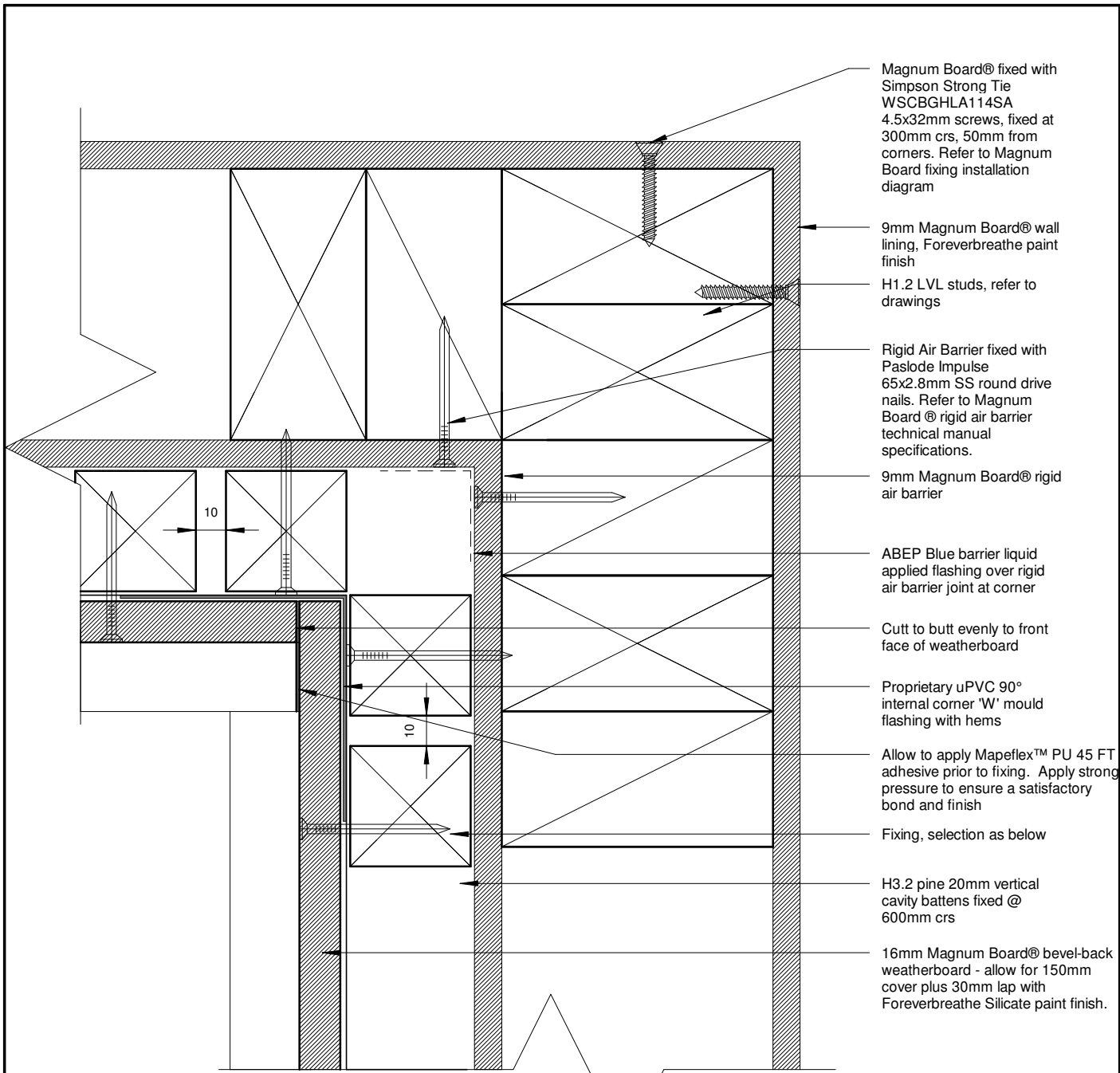
External Cavity Boxed Corner Detail

1 : 2

13/12/2019 2:59:00 PM



150mm
100
50
0 10mm



Internal Corner Cavity Detail
1 : 2

FIXING OPTIONS
Nail fixing (50 x 2.5-2.8mm round head SS coil or cassette nail)
or
Screw fixing (Simpson Strong-Tie CBSDG158SA)
NOTE: For screw-fixing, pre-drill with 5mm Ø drill and countersink bit to prevent splitting.

13/12/2019 2:59:00 PM



150mm

100

50

10mm

0

Selected profiled metal roofing
on roofing underlay

Ensure roofing underlay is laid
horizontally and over top of eaves
flashing. Ensure roof fixing does
not penetrate eave flashing

Folded 0.55BMT Prefinished
metal eaves flashing with hem
at top edge

50

125mm min.-Refer E@/AS1 Fig. 45

Selected spouting

Provide solid blocking for fixing

Hardie and Thompson. Earthen®
fascia board

9mm Magnum Board® soffit
lining, flush stopped, paint finish

Earthen® soffit moulding

H3.2 pine 20mm vertical cavity battens
fixed @ 600mm crs

16mm Magnum Board® bevel-back weatherboard - allow for 150mm cover plus 30mm lap
with Foreverbreathe Silicate paint finish.

Fixing, selection as below

9mm Magnum Board® Rigid Air Barrier fixed
with Paslode Impulse 65x2.8mm SS round
drive nails. Refer to Magnum Board® rigid air
barrier technical manual specifications.

Roof structure in
accordance with
NZS3604 or specific
Engineering design

9mm MAGNUM
board® wall lining or
rigid air barrier, paint
finish

Wall lining fixed with
Simpson Strong Tie
WSCBGHLA114SA
4.5x32mm screws

H1.2 LVL studs, refer
to drawings

FIXING OPTIONS

Nail fixing (50 x 2.5-2.8mm round head SS coil or
cassette nail)

or

Screw fixing (Simpson Strong-Tie CBSDG158SA)

NOTE: For screw-fixing, pre-drill with 5mm Ø drill
and countersink bit to prevent splitting.

Note;

1. All Magnum Board®, ABEP® flashman® products to be installed by approved installers approved by NZSFP Ltd.
2. Where ABEP® blue barrier is in contact with biopin® paint, cemix acrylbond must be applied before application of biopin paint®.
3. Hardie & Thomson® Cover Boards and Scribes, Biopin Paint®, Terra Lana® Wool Insulation are supplied and installed by others.

Eave - Section Cavity Detail

1 : 5

13/12/2019 2:59:00 PM



21/30

Health Based Building Magnum Board 16mm Weatherboard

Eave Section Detail (Cavity)



150mm

100

50

10mm

0

0.55BMT metal barge flashing to match roofing with two crests(Min.) cover to roofings

Earthen® fascia board

Y-Refer table 7 E2/AS1

Selected profile metal roofing on roofing underlay

Z - Refer Table 7

Roof structure as per NZS3604 2011 or specific engineering design

9mm Magnum Board® soffit lining, flush stopped, paint finish

Earthen® soffit moulding

H3.2 pine 20mm vertical cavity battens fixed @ 600mm crs

16mm Magnum Board® bevel-back weatherboard - allow for 150mm cover plus 30mm lap with Foreverbreathe Silicate paint finish.

Fixing, selection as below

9mm Magnum Board® Rigid Air Barrier fixed with Paslode Impulse 65x2.8mm SS round drive nails. Refer to Magnum Board® rigid air barrier technical manual specifications.

9mm MAGNUM board® wall lining or rigid air barrier, paint finish

H1.2 LVL studs, refer to drawings

FIXING OPTIONS

Nail fixing (50 x 2.5-2.8mm round head SS coil or cassette nail)
or
Screw fixing (Simpson Strong-Tie CBSDG158SA)
NOTE: For screw-fixing, pre-drill with 5mm Ø drill and countersink bit to prevent splitting.

Note;

1. All Magnum Board®, ABEP® flashman® products to be installed by approved installers approved by NZSFP Ltd.
2. Where ABEP® blue barrier is in contact with biopin® paint, cemix acrylbond must be applied before application of biopin paint®.
3. Hardie & Thomson® Cover Boards and Scribers, Biopin Paint®, Terra Lana® Wool Insulation are supplied and installed by others.

Barge - Sectional Cavity Detail

1 : 5

13/12/2019 2:59:01 PM

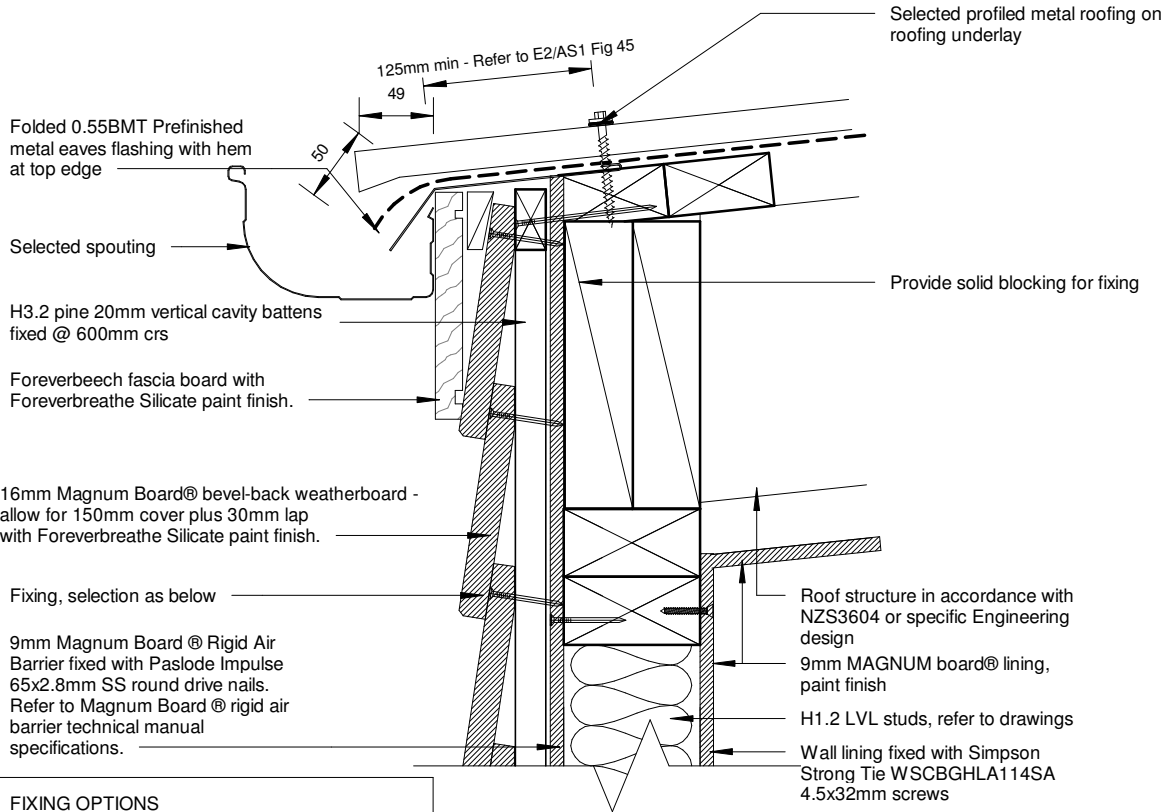


22/30

Health Based Building Magnum Board 16mm Weatherboard

Barge - Section Detail (Cavity)

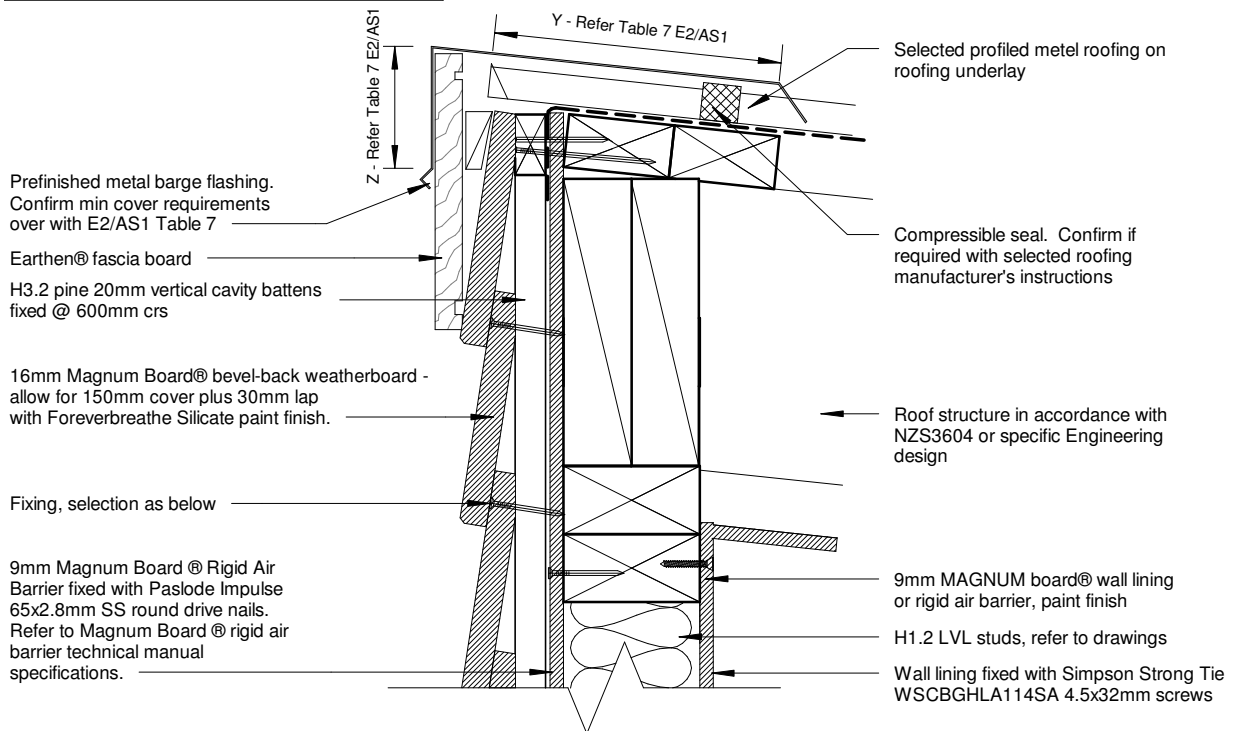




FIXING OPTIONS
 Nail fixing (50 x 2.5-2.8mm round head SS coil or cassette nail)
 or
 Screw fixing (Simpson Strong-Tie CBSDG158SA)
 NOTE: For screw-fixing, pre-drill with 5mm Ø drill and countersink bit to prevent splitting. CBSDG Cement Sheet Screws are for fixing cement sheeting-to-steel joists.

Barge - No Soffit Cavity Detail

1 : 5



Roof - Wall ridge - Section Cavity Detail

1 : 5

150mm
100
50
0 10mm

13/12/2019 2:59:02 PM



23/30

Health Based Building Magnum Board 16mm Weatherboard

Roof - Wall Ridge - Section Detail (Cavity)



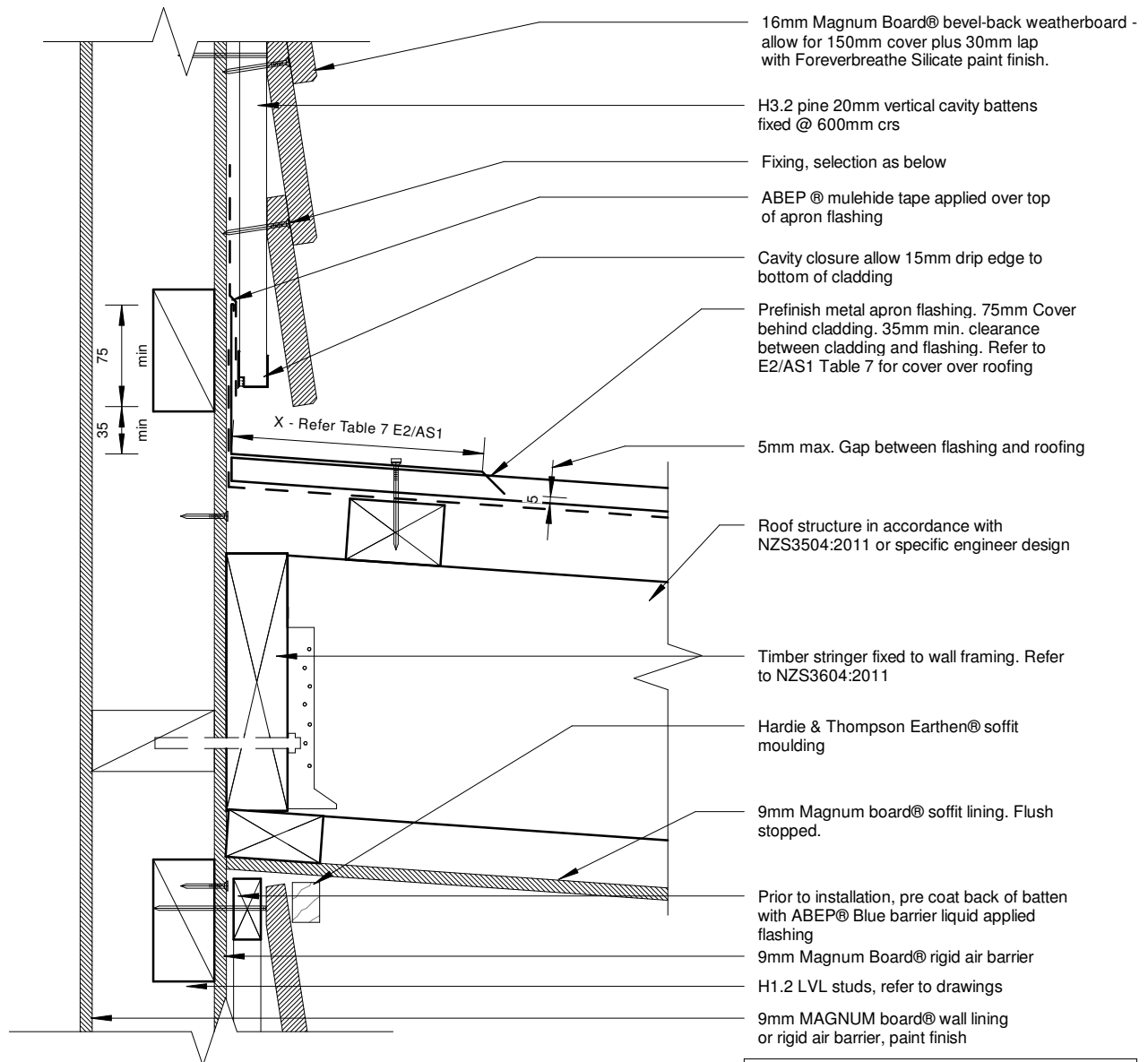
150mm

100

50

10mm

0



16mm Magnum Board® bevel-back weatherboard - allow for 150mm cover plus 30mm lap with Foreverbreathe Silicate paint finish.

H3.2 pine 20mm vertical cavity battens fixed @ 600mm crs

Fixing, selection as below

ABEP® mulehide tape applied over top of apron flashing

Cavity closure allow 15mm drip edge to bottom of cladding

Prefinish metal apron flashing. 75mm Cover behind cladding. 35mm min. clearance between cladding and flashing. Refer to E2/AS1 Table 7 for cover over roofing

5mm max. Gap between flashing and roofing

Roof structure in accordance with NZS3504:2011 or specific engineer design

Timber stringer fixed to wall framing. Refer to NZS3604:2011

Hardie & Thompson Earthen® soffit moulding

9mm Magnum board® soffit lining. Flush stopped.

Prior to installation, pre coat back of batten with ABEP® Blue barrier liquid applied flashing

9mm Magnum Board® rigid air barrier

H1.2 LVL studs, refer to drawings

9mm MAGNUM board® wall lining or rigid air barrier, paint finish

Note: Where ABEP® Blue barrier is in contact with Biopin® paint, cemix acrylbond must be applied before application of Biopin Paint®

FIXING OPTIONS
Nail fixing (50 x 2.5-2.8mm round head SS coil or cassette nail)
or
Screw fixing (Simpson Strong-Tie CBSDG158SA)
NOTE: For screw-fixing, pre-drill with 5mm Ø drill and countersink bit to prevent splitting.

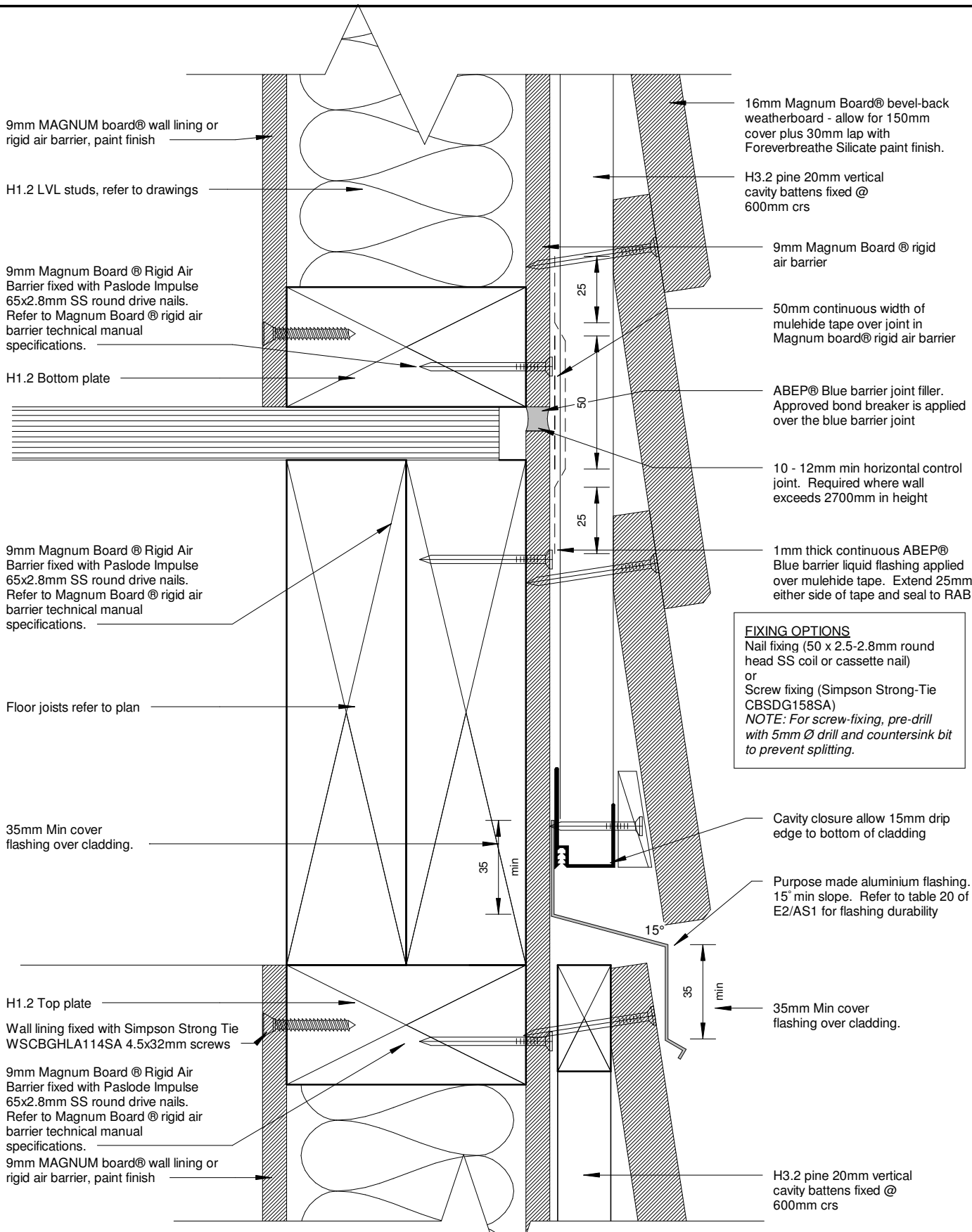
Canopy Junction - Section Cavity Detail

1 : 5

13/12/2019 2:59:03 PM



150mm
100
50
0 10mm



FIXING OPTIONS
 Nail fixing (50 x 2.5-2.8mm round head SS coil or cassette nail)
 or
 Screw fixing (Simpson Strong-Tie CBSDG158SA)
 NOTE: For screw-fixing, pre-drill with 5mm Ø drill and countersink bit to prevent splitting.

Horizontal Control Joint Cavity Detail

1 : 2

13/12/2019 2:59:03 PM



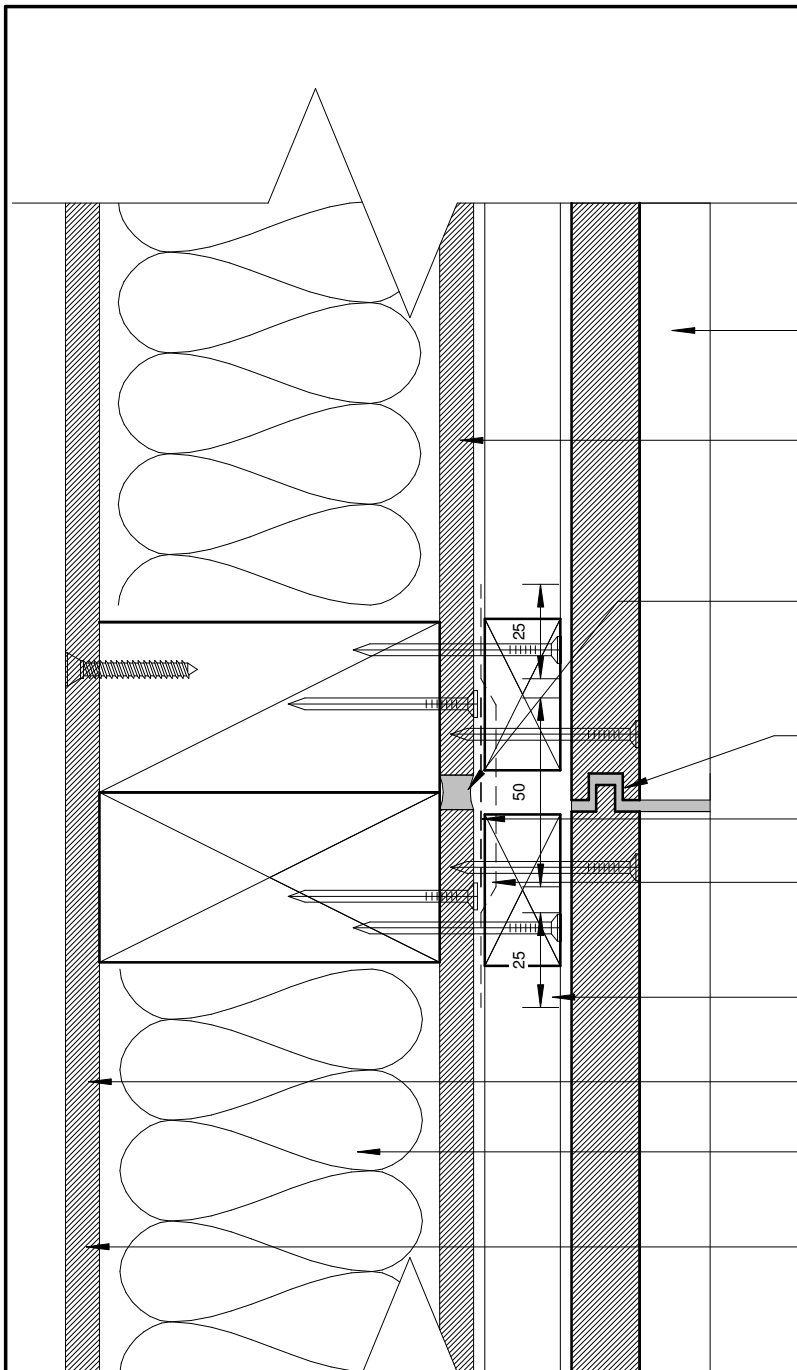
150mm

100

50

0 10mm

13/12/2019 2:59:04 PM



- 16mm Magnum Board® bevel-back weatherboard - allow for 150mm cover plus 30mm lap with Foreverbreathe Silicate paint finish.
- 9mm Magnum Board® Rigid Air Barrier fixed with Paslode Impulse 65x2.8mm SS round drive nails. Refer to Magnum Board® rigid air barrier technical manual specifications.
- 10 - 12mm min vertical control joint. Required where wall exceeds 6m in length. Fill with ABEP BEP® Blue barrier joint filler continuous bead of sealant
- Magnum Board® Weather Board - allow to apply Mapei Mapeflux PU45 adhesive only to T&G end joining or butt end joining on studs
- 50mm continuous width of mulehide tape over joint in Magnum RAB board
- 1mm thick continuous ABEP BEP® Blue barrier liquid flashing applied over mulehide tape. Extend 25mm either side of tape and seal to RAB
- H3.2 pine 20mm vertical cavity battens fixed @ 600mm crs
- 9mm MAGNUM board® wall lining or rigid air barrier, paint finish
- H1.2 LVL studs, refer to drawings
- Wall lining fixed with Simpson Strong Tie WSCBGHLA114SA 4.5x32mm screws

Vertical Control Joint on Cavity

1:2



9mm Magnum Board @ Rigid Air Barrier fixed with Paslode Impulse 65x2.8mm SS round drive nails. Refer to Magnum Board @ rigid air barrier technical manual specifications.

16mm Magnum Board@ bevel-back weatherboard - allow for 150mm cover plus 30mm lap with Foreverbreathe Silicate paint finish.

Fixing, selection as below

H3.2 pine 20mm vertical cavity battens fixed @ 600mm crs

Cavity closure allow 15mm drip edge to bottom of cladding

Bottom of cladding must be hard down on top of flashman jamb fin

Flashman @ extruded aluminium one piece cavity closure and head flashing with stop end (shown dashed)

35mm min. Flashing upstand behind cladding, and 10mm min. cover over joinery

Flashman extruded aluminium jamb flashing

Earthen@ timber reveal - choose size + code

Wall lining fixed with Simpson Strong Tie WSCBGHLA114SA 4.5x32mm screws

H1.2 LVL studs, refer to drawings

9mm MAGNUM board@ wall lining or rigid air barrier, paint finish

Proprietary tape over head flashing supplied and installed by flashman

H1.2 Lintel refer to plan

10mm Gap nominal to allow for head deflection and air seal

Continuous flexible air seal on PEF backing rod to perimeter of opening

ABEP@ Blue barrier liquid applied flashing. Apply according to manufacturer's instructions

Temporary packers if required are to be removed after fixing

FIXING OPTIONS

Nail fixing (50 x 2.5-2.8mm round head SS coil or cassette nail)

or

Screw fixing (Simpson Strong-Tie CBSDG158SA)

NOTE: For screw-fixing, pre-drill with 5mm Ø drill and countersink bit to prevent splitting.

Typical Head Cavity Detail

1 : 5

Flashman @ aluminium mitre soaker supplied by flashman

3mm Gap between bottom edge of extruded aluminium flange and top of flashman sill

Flashman@ extruded aluminium streamline line

Bead of sealant applied by flashman installer

Flashman back plate (Shown dashed)
H3.1 Packer supplied and installed by flashman

H3.2 pine 20mm vertical cavity battens fixed @ 600mm crs

16mm Magnum Board@ bevel-back weatherboard - allow for 150mm cover plus 30mm lap with Foreverbreathe Silicate paint finish.

9mm Magnum Board @ Rigid Air Barrier fixed with Paslode Impulse 65x2.8mm SS round drive nails. Refer to Magnum Board @ rigid air barrier technical manual specifications.

Earthen @ timber reveal

Continuous flexible air seal on PEF backing rod to perimeter of opening

10mm nominal gap

Timber packer as required

ABEP@ Blue barrier liquid applied flashing. Apply according to manufacturer's instructions

14 Gauge Hot Dip Galvanised (316 SS Where required) S.T. H.C Screws at 600mm crs with 65mm min. frame penetration. Supplied and installed by flashing @. Refer to E2/AS for durability requirements

9mm MAGNUM board@ wall lining or rigid air barrier, paint finish

H1.2 LVL studs, refer to drawings

Wall lining fixed with Simpson Strong Tie WSCBGHLA114SA 4.5x32mm screws

Typical Sill Cavity Detail

1 : 5

150mm

100

50

10mm

13/12/2019 2:59:04 PM



Wall lining fixed with Simpson Strong Tie
WSCBGHLA114SA 4.5x32mm screws
9mm MAGNUM board® wall lining
or rigid air barrier, paint finish
H1.2 LVL studs, refer to drawings

9mm Magnum Board® Rigid Air
Barrier fixed with Paslode Impulse
65x2.8mm SS round drive nails.
Refer to Magnum Board® rigid air
barrier technical manual
specifications.

H3.2 pine 20mm vertical cavity
battens fixed @ 600mm crs

16mm Magnum Board® bevel-back weatherboard
allow for 150mm cover plus 30mm lap
with Foreverbreathe Silicate paint finish.

Flashman® extruded 40mm aluminium
jamb flashing

Line of flashing slimline® sill below

Note: Where ABEP® Blue barrier is in contact with
BIOPIN® Paint, cemix acrylbond must be applied
before application of BIOPIN paint®

DO NOT FIX THROUGH JAMB
FLASHING

10mm Nominal gap

Earthen® timber reveal
and architrave

Continuous flexible air seal
on PEF backing rod to
perimeter of opening

Timber packer as required

ABEP® Blue barrier liquid
applied flashing. Apply according
to manufacturer's instruction

Selected aluminium joinery

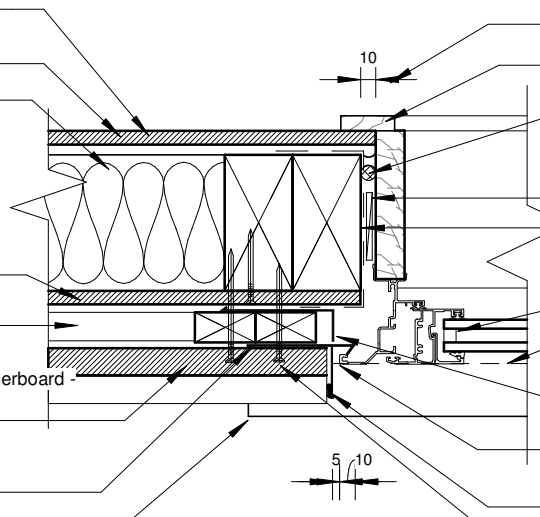
Head flashing over (Shown
dashed)

Powdercoated aluminium J
flashing

10mm min. joinery cover over
jamb flashing

Bead of sealant

Fixing from top of board 10mm
min from edge with 75x3.15mm
nails



Typical Jamb Cavity Detail

1 : 5

150mm

100

50

10mm

0

13/12/2019 2:59:05 PM

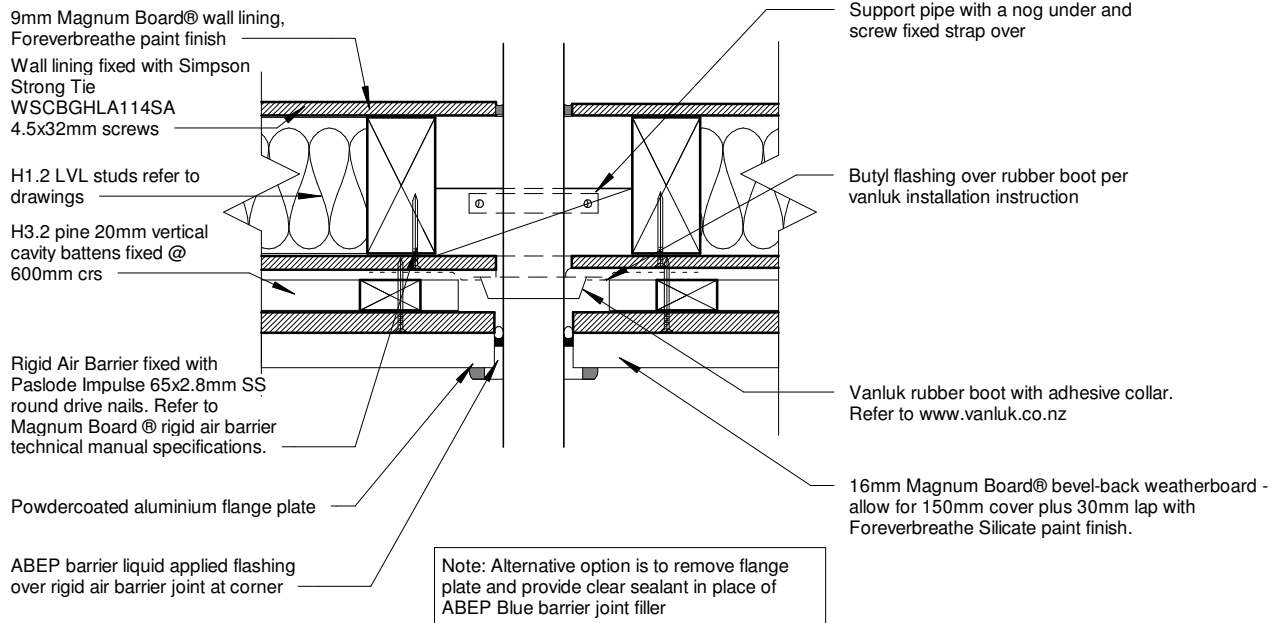


28/30

Health Based Building Magnum Board 16mm Weatherboard

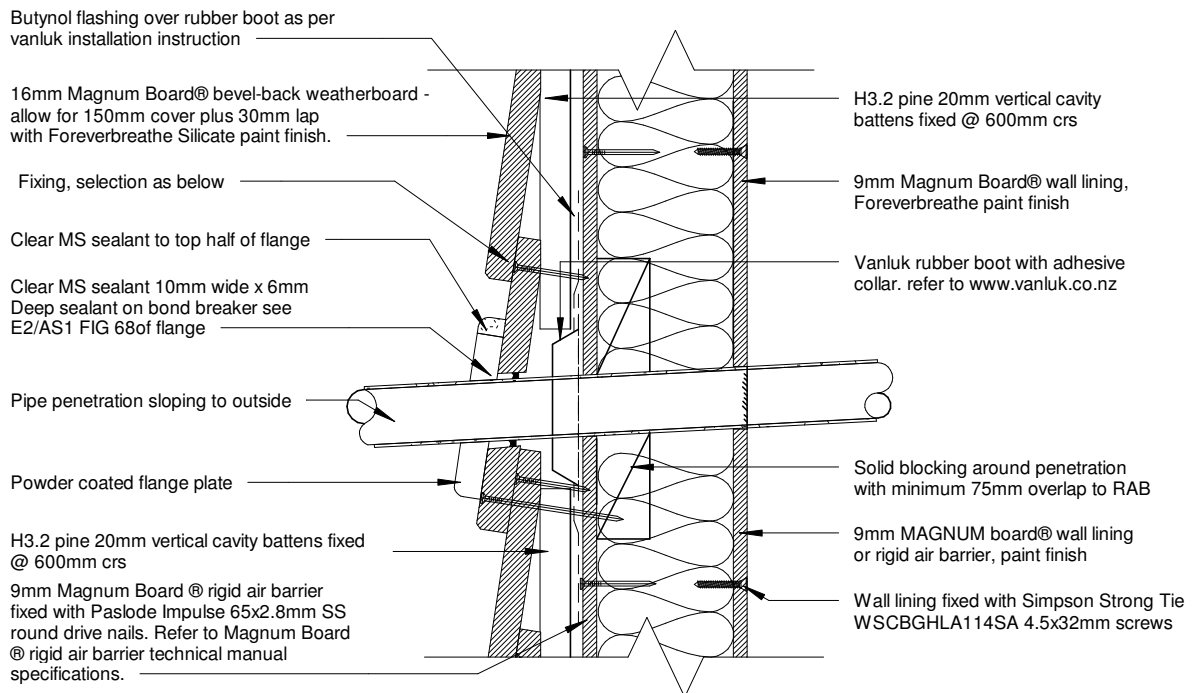
Typical Jamb Detail (Cavity)





Pipe Penetration Plan Cavity Detail

1 : 5



FIXING OPTIONS

Nail fixing (50 x 2.5-2.8mm round head SS coil or cassette nail)
or
Screw fixing (Simpson Strong-Tie CBSDG158SA)
NOTE: For screw-fixing, pre-drill with 5mm Ø drill and countersink bit to prevent splitting.

Note:

1. Where ABEP® Blue barrier is in contact with Biopin® paint, cemix acrylbond must be applied before application of biopin®

Pipe Penetration Section Cavity Detail

1 : 5

29/30

Health Based Building Magnum Board 16mm Weatherboard

Pipe Penetration - Plan & Section Detail (Cavity)



13/12/2019 2:59:06 PM

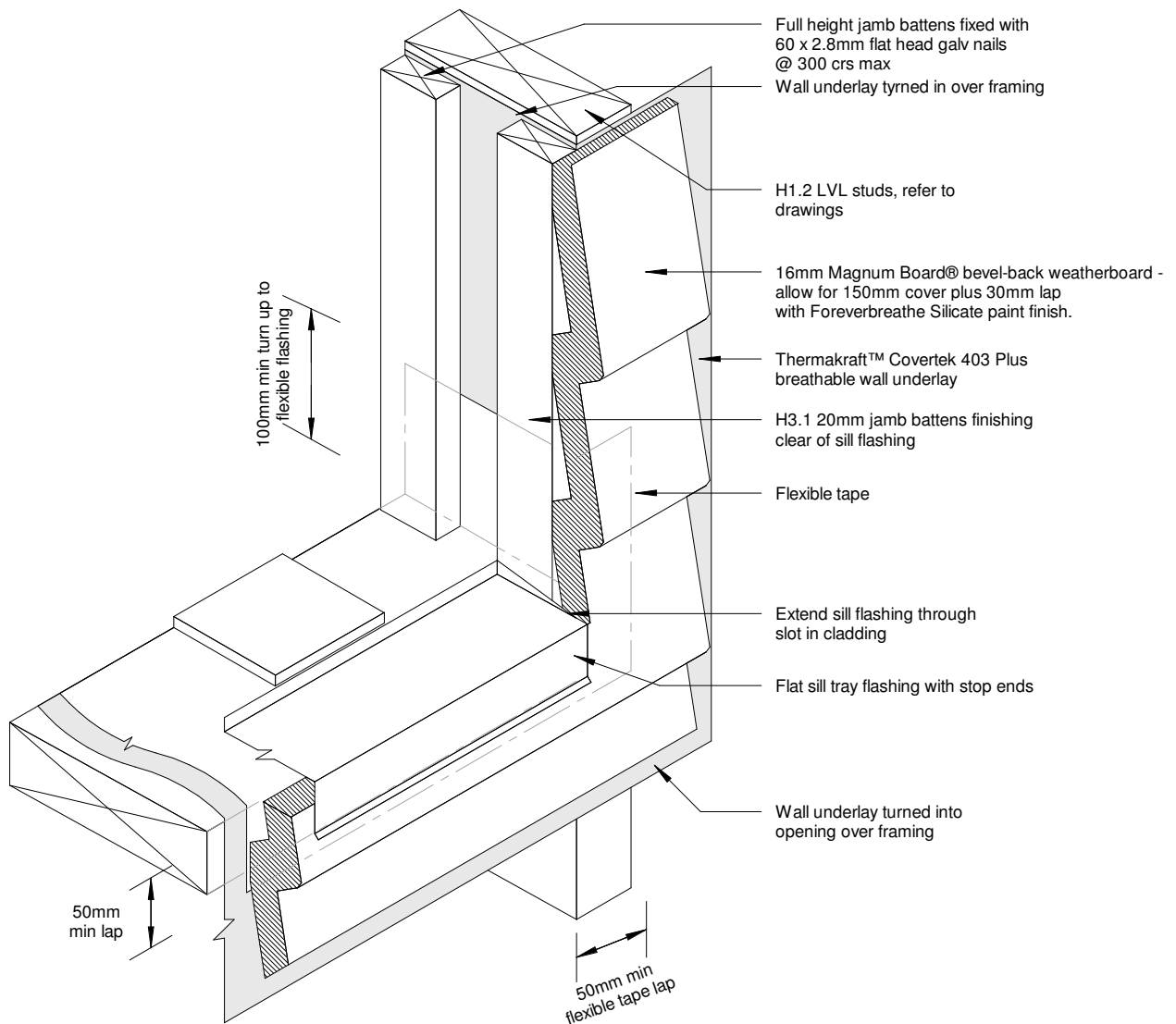
150mm

100

50

10mm

0



13/12/2019 2:59:06 PM



30/30

Health Based Building Magnum Board 16mm Weatherboard
 Typical Door/Window Opening (Cavity)

