



EZI-LINE™

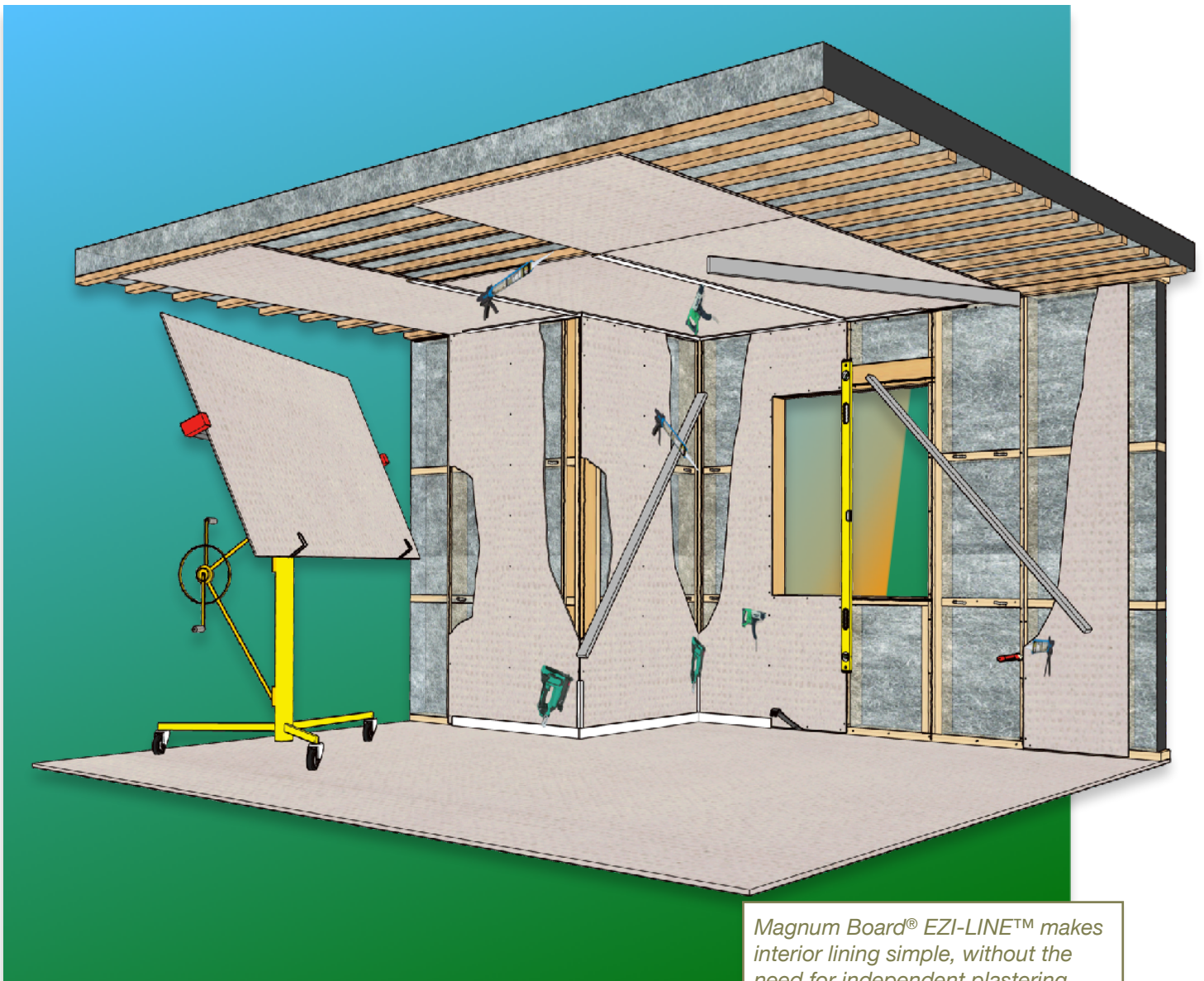
: A Magnum Board® Product

Product Installation Information

Issued by : Health Based Building

Number : 0001
Version : 1.0
Date of Issue : 20/08/2021
Valid until : 20/08/2024

: 9mm MAGNUM BOARD® EZI-LINE™ TECHNICAL INFORMATION



Magnum Board® EZI-LINE™ makes interior lining simple, without the need for independent plastering.

: Health Based Building

1062 Colombo Street
Edgware
Christchurch 8014



☎ 0800 611 711
✉ enquiries@healthbasedbuilding.co.nz
🔍 www.healthbasedbuilding.com

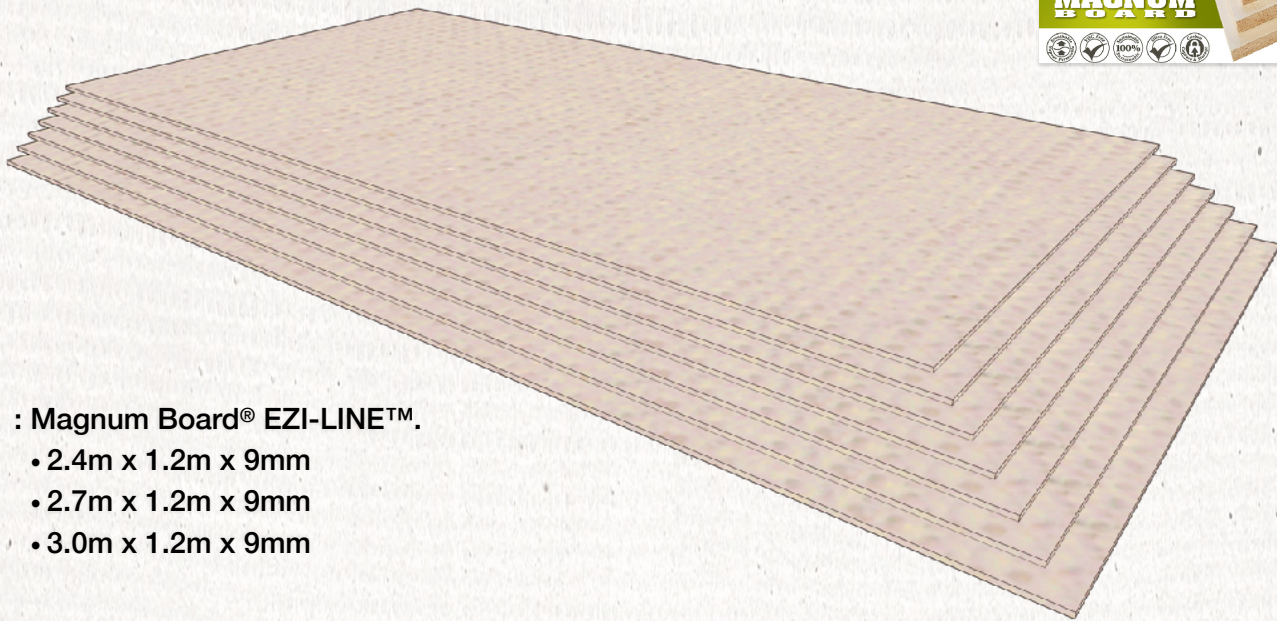


1 : CONTENTS

1 : MATERIALS, PRODUCT, TOOLS AND FASTENERS	3
2 : IMPORTANT INFORMATION	6
3 : INDEPENDENT TESTING	7
4 : MATERIAL SAFETY, HANDLING, MAINTENANCE AND STORAGE REQUIREMENTS	8
5 : INSTALLATION PROCEDURE	9
6 : EZY-LINE™ FIXING PATTERN : diagram on p 27	9
7 : PREPARATION	10
8 : INSTALLATION	15
9 : MAGNUM BOARD MSDS	17
10 : PRE-CHECKLIST	25
11 : FINAL CHECKLIST	26
12 : EZY-LINE™ FIXING PATTERN : cont. from p 9	27

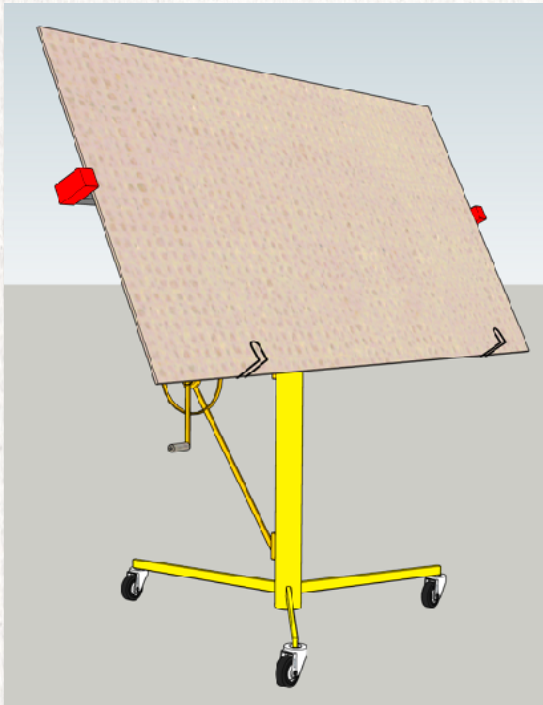


1 : MATERIALS, PRODUCT, TOOLS AND FASTENERS

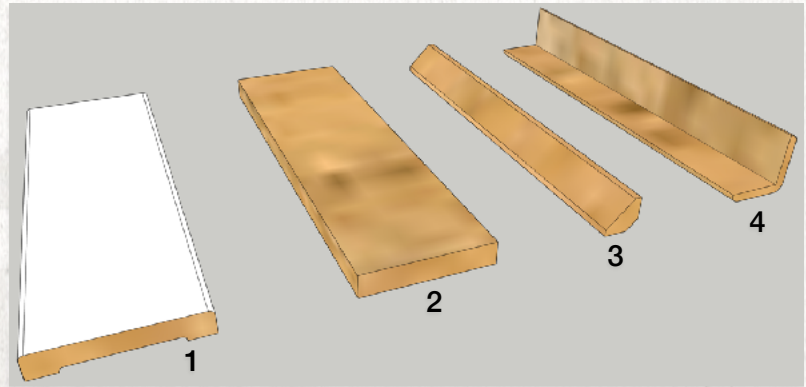


: Magnum Board® EZI-LINE™.

- 2.4m x 1.2m x 9mm
- 2.7m x 1.2m x 9mm
- 3.0m x 1.2m x 9mm

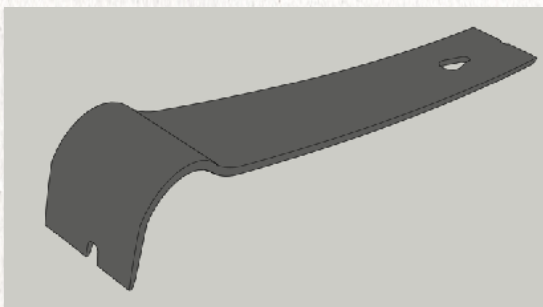


: Sheet lifter

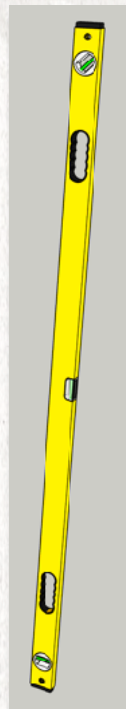


: Finishing timber profiles

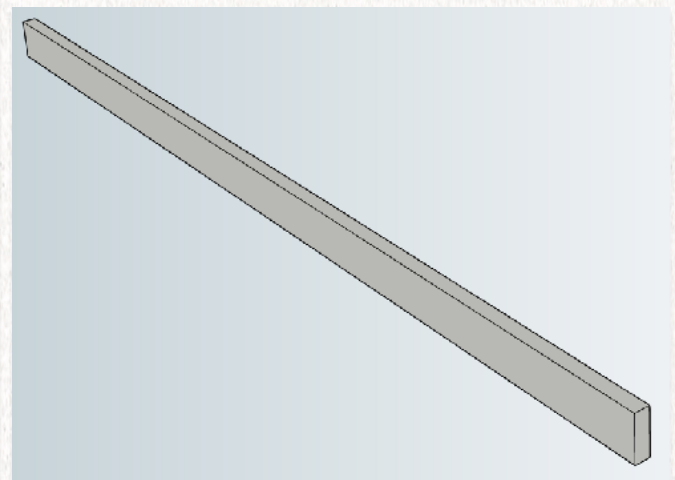
1. Earthen Radiata pre-primed ceiling batten 60 x 10 mm
2. Earthen Radiata dressed four sides 60 x 10 mm
3. Earthen Radiata internal corner moulding 18 x 18 mm
4. Earthen Radiata external corner moulding 28 x 28 mm



: Lifting bar



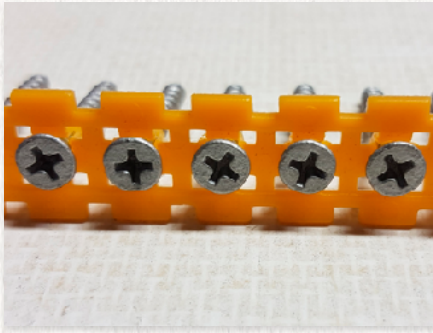
: Spirit level
1.8m min.



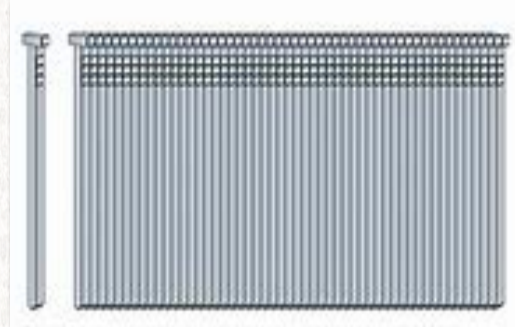
: Straight edge
1.8m min



1 : MATERIALS, PRODUCT, TOOLS AND FASTENERS (cont.)



: Fortress Fasteners 6g x 32mm C3 Galvanised collated screws



: 50mm pin



: Mapei Ultrabond S9971K Adhesive



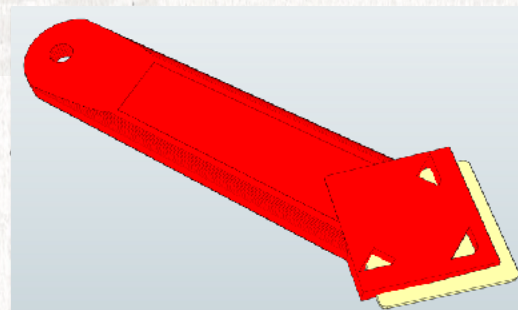
: Battery-operated sausage applicator



: Sanding block and paper



: Tape measure



: Silicone removal tool



: Polyfilla



: Polyfilla applicator

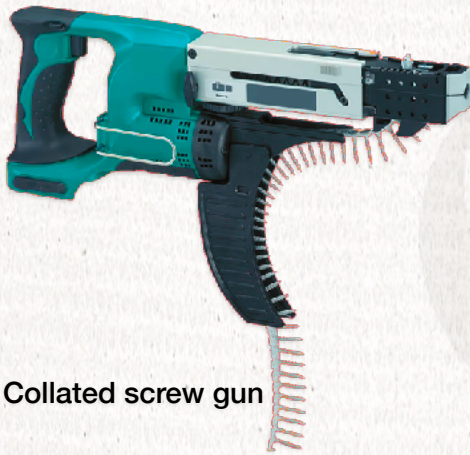




: Battery-powered drill gun with torque control.



: Hand trimmer



: Collated screw gun



: Pin gun

: HEPA extraction system with recommended cutting equipment.



2 : IMPORTANT INFORMATION

- Magnum Board® EZI-LINE™ can be installed to solid timber framing, LVL framing and steel framing in compliance with local building codes.
- Stud spacing's not to exceed 600mm centres. Stud spacing's will reduce for use in specific wind classifications.
- A 35mm minimum stud width is required for timber or steel framing. Steel framing gauge to be 0.55 - 1.6 based metal thickness.
- Timber framing must be kiln dried. Framing quality must straight and level to a standard that supports Magnum Board® to all surfaces in contact with framing. Installation to buckled or bent framing will result in tension within Magnum Board® that may lead to movement in a micro-bevel edge and establish surface cracking.
- Magnum Board® EZI-LINE™ can be installed for use as a bracing element, a non-combustible element, a high impact resistant element and a wet area element.

: Responsibility

It is the responsibility of the installer to inspect their workplace prior to beginning the installation of Magnum Board® to ensure installed work will meet the owner / contractor's requirements. The owner / contractor must be notified of any concerns prior to the start of Magnum Board® EZI-LINE™ placing.

: Warranty

While every effort has been made to ensure a satisfactory outcome with respect to the use of Magnum Board® EZI-LINE™ - along with all Magnum Board® products - no dialogue or negotiation will be considered if any method or third-part product has been used a part from those described in this technical manual. Any warranty - written or implied - will be subject to examination, and will apply solely to the quality of the Magnum Board® product being deficient at the point of purchase only, or the subsequent deficient performance of the product once the correct method of installation has been determined. Any deficient performance resulting from the application of a third party product, will become the responsibility of that products manufacturer and / or agents. Magnum Board® and its associated agents will not be held responsible for any such incident or outcome.

: Surface Finishes

The surface of the Magnum Board® must be clean, dust and contaminant free prior to the commencement of any successive treatment or process. Coating must commence within 30 days of installation. Foreverbreathe™ Interior Wall Paint is required to maintain vapour permeability / Foreverbreathe™ Specification.

For more information go to : www.healthbasedbuilding.com



3 : INDEPENDENT TESTING



- Physical Properties Testing of Magnesium Oxide Sheets per AC386 (Acceptance Criteria for Fibre-Reinforced Magnesium-Oxide Based Sheets)
 - Flexural Strength per C1185-03
 - Dimensions and Tolerances per C1325-04
 - Moisture Movement per C1186-02
 - Water Absorption per C1186-02
 - Compression Indentation per C1325-04
 - Nail Head Pull-through per C1325-04
 - Falling Ball Impact per C1325-04
 - Shear Bond Strength per C1325-04
 - Humidity Deflection per C1325-04
 - Transverse Load per AC376 and E72-05
 - Wet Racking Shear per AC379 and E72-05 section 15
 - Xenon Arc Accelerated Weathering per ASTM G155
 - Surface Burning Characteristics per ASTM E84-05
 - Measurement of Acute Lethality of Thermal Decomposition Products per University of Pittsburgh Test Protocol, December 1988
 - Behaviour of Materials in a Vertical Tube Furnace at 750°C per ASTM E136-04
 - Frost Resistance (Freeze / Thaw) per ASTM C1185
- SCION Bracing P21 x 2
- BRANZ Flame spread assessment FAR 4338
- 60 minute fire rating steel and timber framed wall
- EMSL VOC report
- Durability report interior wall linings inclusive of wet areas
- AccreditedMark Appraisal AML0001AU Magnum Board® 18mm Flooring Underlay
- AccreditedMark Appraisal AML0002AU Magnum Board® 16mm Weatherboard
- BEAL Certifications Magnum Board® Rigid Air Barrier appraisal C1405
- BEAL Certifications Magnum Board® Weatherboard appraisal C1410
- Holmes Solutions flexural testing Magnum Board® 18mm Flooring Underlay



4 : MATERIAL SAFETY, HANDLING, MAINTENANCE AND STORAGE REQUIREMENTS

- Even though Magnum Board® is a non-toxic building material, always wear a dusk mask, safety glasses and follow MSDS Guidelines.
- Never use a circular saw blade that is inappropriate for the specific operation being undertaken.
- Never use a grinder or continuous rim diamond blade for cutting.
- Never dry sweep.
- It is good construction practice to marshal or stage the materials to be installed as close to the point of installation as possible.
- When cutting Magnum Board® ensure the supporting structure is level and preventing distortion. Distortion in Magnum Board® will establish inaccuracy in the edge being cut regardless of correct cutting equipment being involved.
- Always protect all edges of Magnum Board® prior to and during installation.
- Do not stack other materials on top of Magnum Board®.
- During construction, ensure Magnum Board's® surface is kept clean and unmarked by the removal of any building material waste, soil, or any organic or other potential contaminant, before the application of decorative coverings and coatings.
- Magnum Board® must be stored inside, in a well ventilated area, up off concrete floors, kept dry, out of direct sunlight and away from freezing conditions.

: Using Magnum Board® in relation to other manufacturers products :

- Magnum Board® must be free of all dust, paint and / or other surface contaminants before the commencement of any third party application or process.
- In case of an apparent conflict between the Magnum Board® instructions and those of a third party, contact www.healthbasedbuilding.com for clarification.

: Installer :

- To be installed either by, or under the direct supervision of, a qualified building practitioner.

Building Practitioner name : _____

Licence number : _____



5 : INSTALLATION PROCEDURE

: Purpose

To define the guidelines for cutting and installing Magnum Board® EZI-LINE™.

Note :

- Magnum Board® EZI-LINE™ when installed to ceilings and inclusive of timber profiles can be installed with 1.2 joints inline across the ceiling layout as per drawing page number 10 with batten spacings @ 300mm centres.
- Magnum Board® EZI-LINE™ when installed in absence of decorative timber profiles and micro-bevel edges must be installed using a staggered pattern. This requires Magnum Board® EZI-LINE™ to be installed with long edges parallel to ceiling battens and 1.2m ends supported by back blocking. Batten spacings can be @ 600mm centres.
- Where Magnum Board® EZI-LINE™ is to be installed in wet areas refer Mapei product information www.healthbasedbuilding.com/magnum-board/mapei-product-application-to-magnum-board
- Surface imperfections, screw fixings and pin fixings can be filled with FX Interior Top Coat. Refer Preparation for plastering document.

For more information go to : www.healthbasedbuilding.com

- Magnum Board® EZI-LINE™ can be cut and bored using hand-held equipment with tungsten carbide tooling for small surface areas not involving connection of the micro-bevel. HEPA cutting and extraction systems must be used where edges are to be micro-bevelled.
- Ensure a continuous bead of Mapei PU45 is applied to all framing in contact with Magnum Board® EZI-LINE™. Failure to involve a continuous bead can establish fluctuations to the surface and hairline cracks in the paint surface between joints.
- Always use minimum C3 coated screws and stainless-steel pin fixings stated in this technical manual.

Note :

- The chart below gives the spacings required to ensure optimum performance from Magnum Board® EZI-LINE™. These fixings are in addition to the Mapei adhesive as described. See page 27 for a picture of the correct fixing pattern. Be aware that the sheet shown is 2400 x 1200 x 9mm and the larger sheets will require additional fixings at the same pattern.

6 : RIGID AIR BARRIER FIXING PATTERN : see also diagram on p 27

CORNERS	EDGES	MIDDLE
First 50mm from each edge	First 15mm from each edge	First 15mm from each end
Second 250mm c/c	Second 250mm c/c	Second 250mm c/c
Thereafter 300mm c/c	Thereafter 300mm c/c	Thereafter 300mm c/c

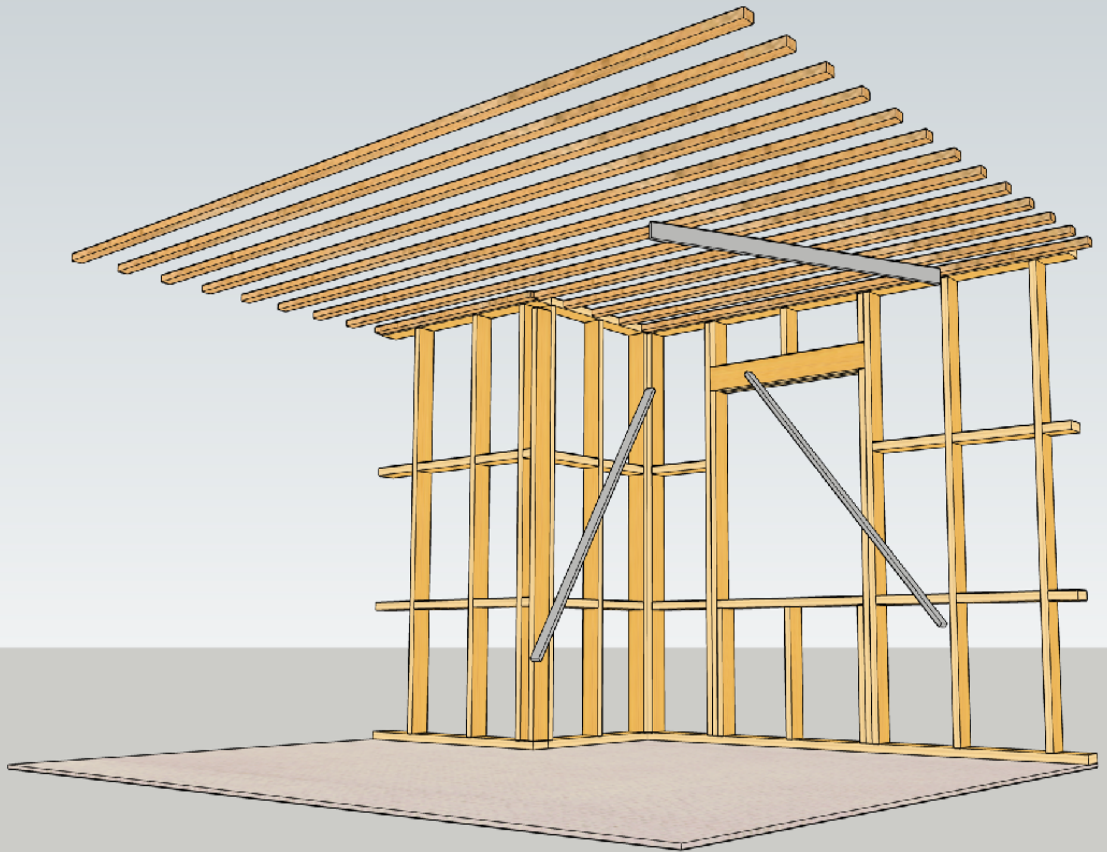


7 : PREPARATION : 1

Showing timber framing at maximum 600 centres to support Magnum Board® installed to walls.

Ceiling battens at 300mm spacings to support Magnum Board® installed to ceilings.

A 1.8m straight edge is used to ensure framing and ceiling battens are level and straight in order to support Magnum Board® to all edges without packing material or distortion.



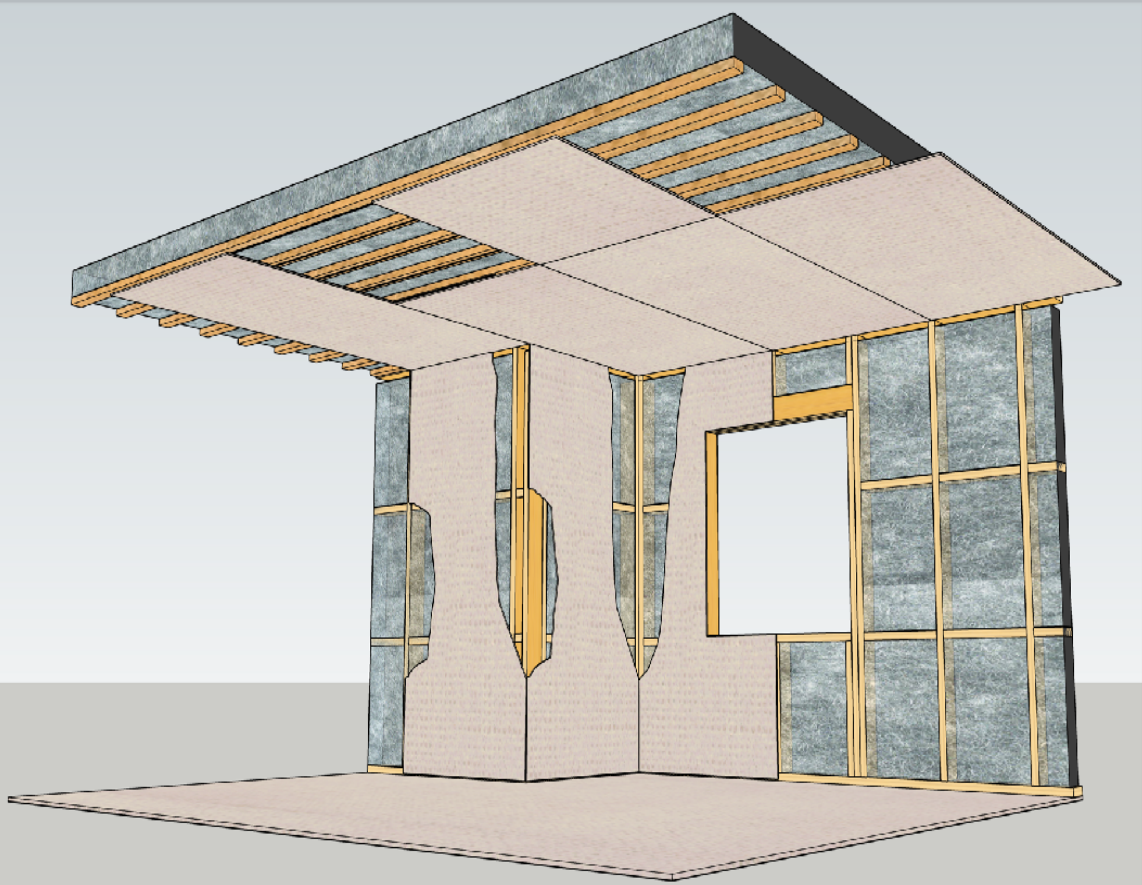
7 : PREPARATION : 2

Showing correct orientation of Magnum Board® EZY-LINE™ to wall framing and ceiling battens with insulation installed.

Magnum Board® EZY-LINE™ is to be installed to the ceiling before the walls.

Equal sizing of Magnum Board® EZY-LINE™ installed to the ceiling will ensure best appearance when ceiling profiles are installed.

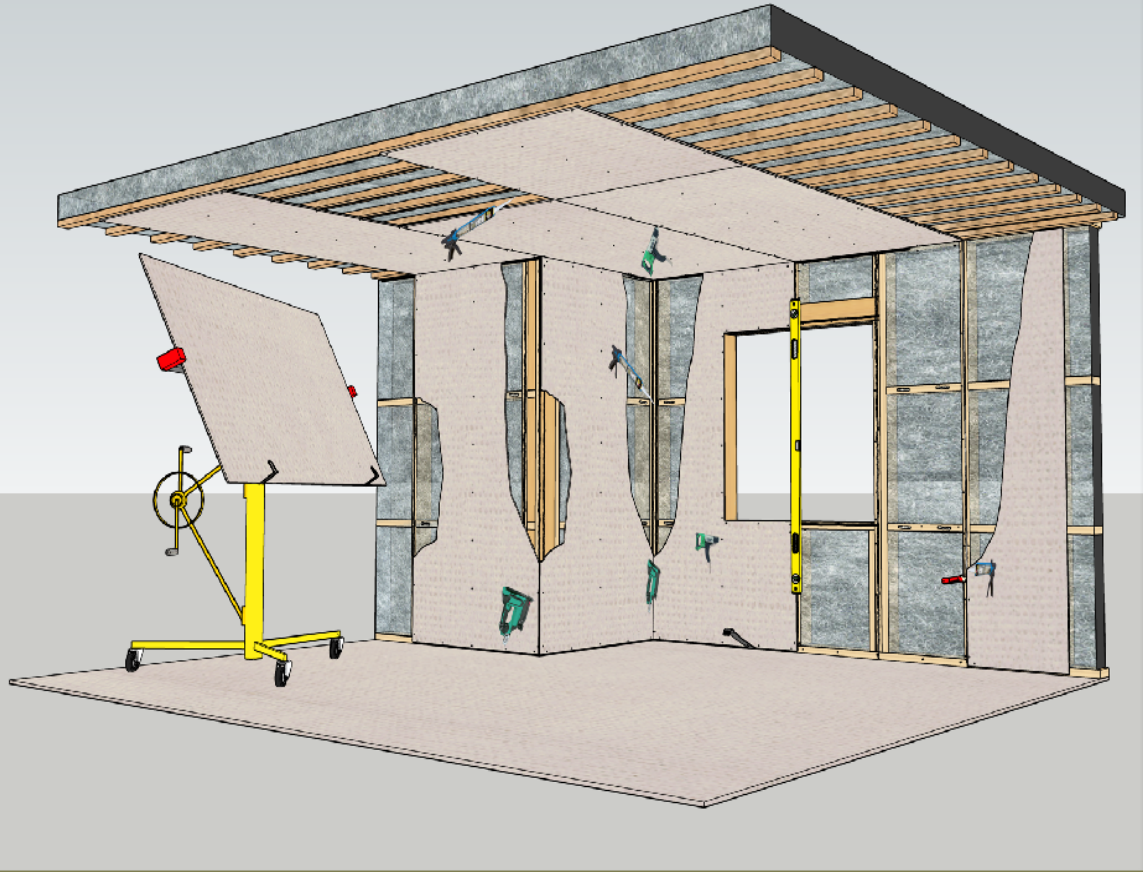
Always begin installation of Magnum Board® EZY-LINE™ to walls at the point of internal wall junctions.



7 : PREPARATION : 3

Showing tools and equipment required for correct installation of Magnum Board® EZY-LINE™ to ceilings and walls.

Surfaces must be clean and free from any protrusions or substances which may compromise the integrity of the products.



7 : PREPARATION : 4

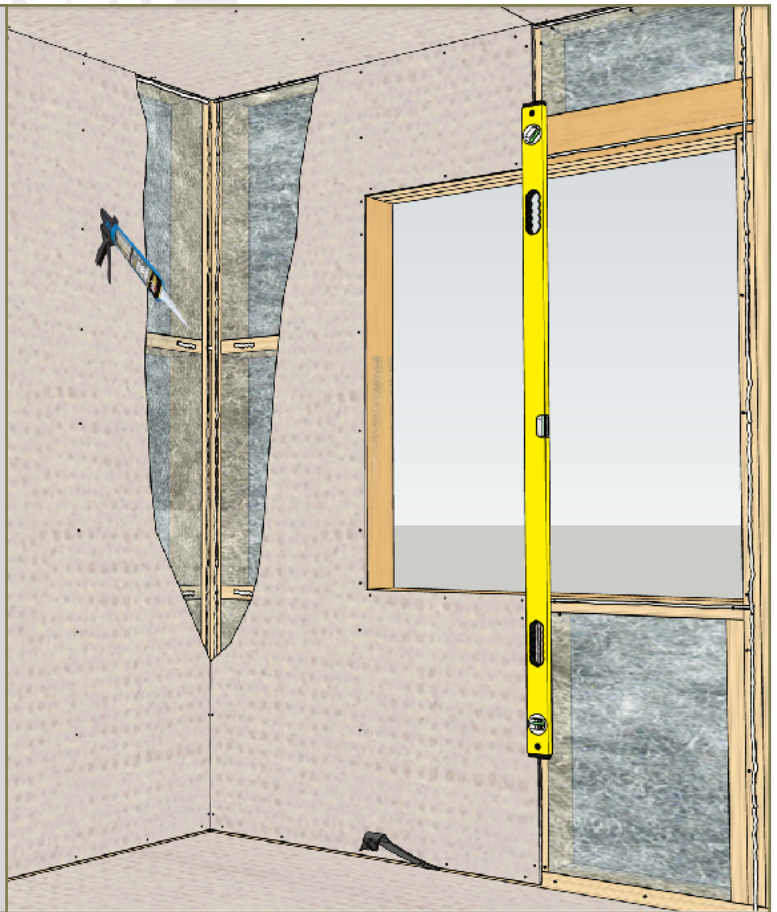
Always begin wall installation at the internal wall junction after Magnum Board® EZY-LINE™ has been installed to the ceiling area.

Wall and ceiling adhesive has been applied to the perimeter of wall framing and centre of ceiling battens.

Magnum Board® EZY-LINE™ has been positioned and checked for correct vertical alignment using a minimum 1.8m spirit level.

Screws are installed to the centre of Magnum Board® EZY-LINE™ to hold the board in place before continuing to install screws to the perimeter.

A lever bar to the floor line is used to ensure Magnum Board® EZY-LINE™ is pushed up tight to where it meets Magnum Board® EZY-LINE™ at the ceiling junction.

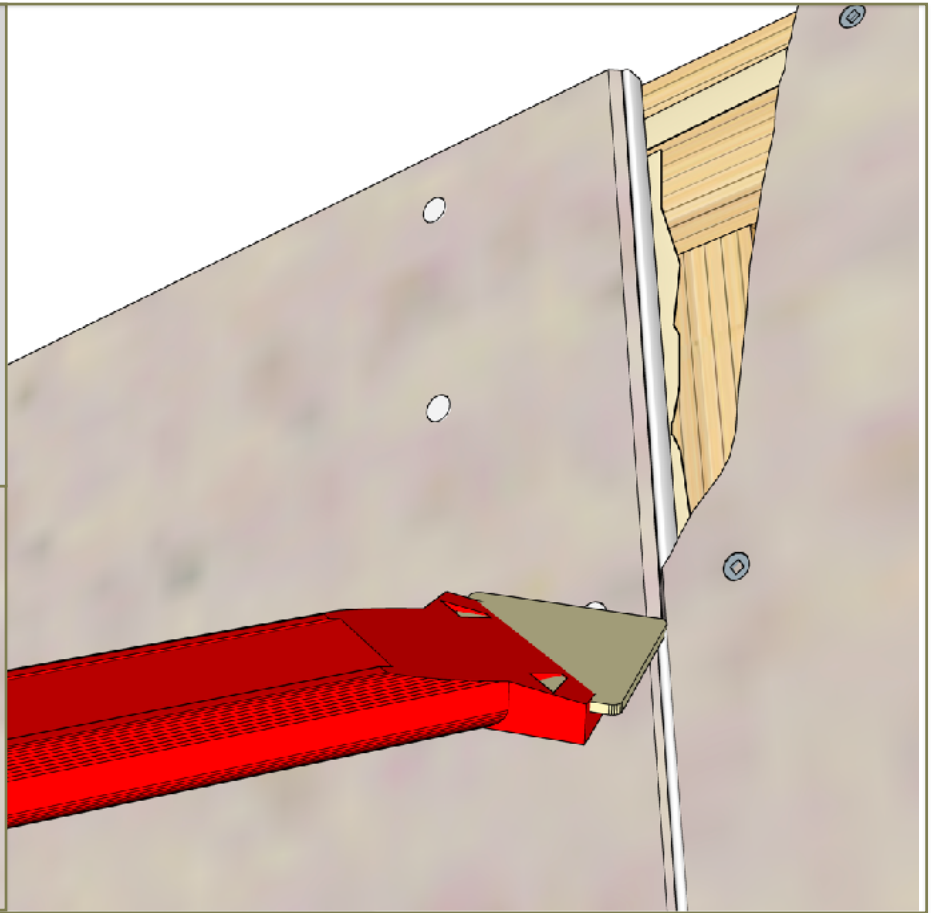
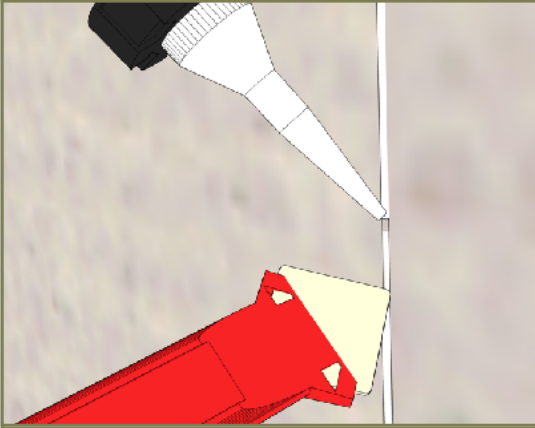


7 : PREPARATION : 5

Showing application of Polyfilla to the edge of Magnum Board® EZY-LINE™ and removal of excess Polyfilla using the hand-held V-Tool.

Edge to edge contact of Magnum Board® EZY-LINE™ is necessary to ensure Polyfilla is forced out of the joint to be removed by the v-tool.

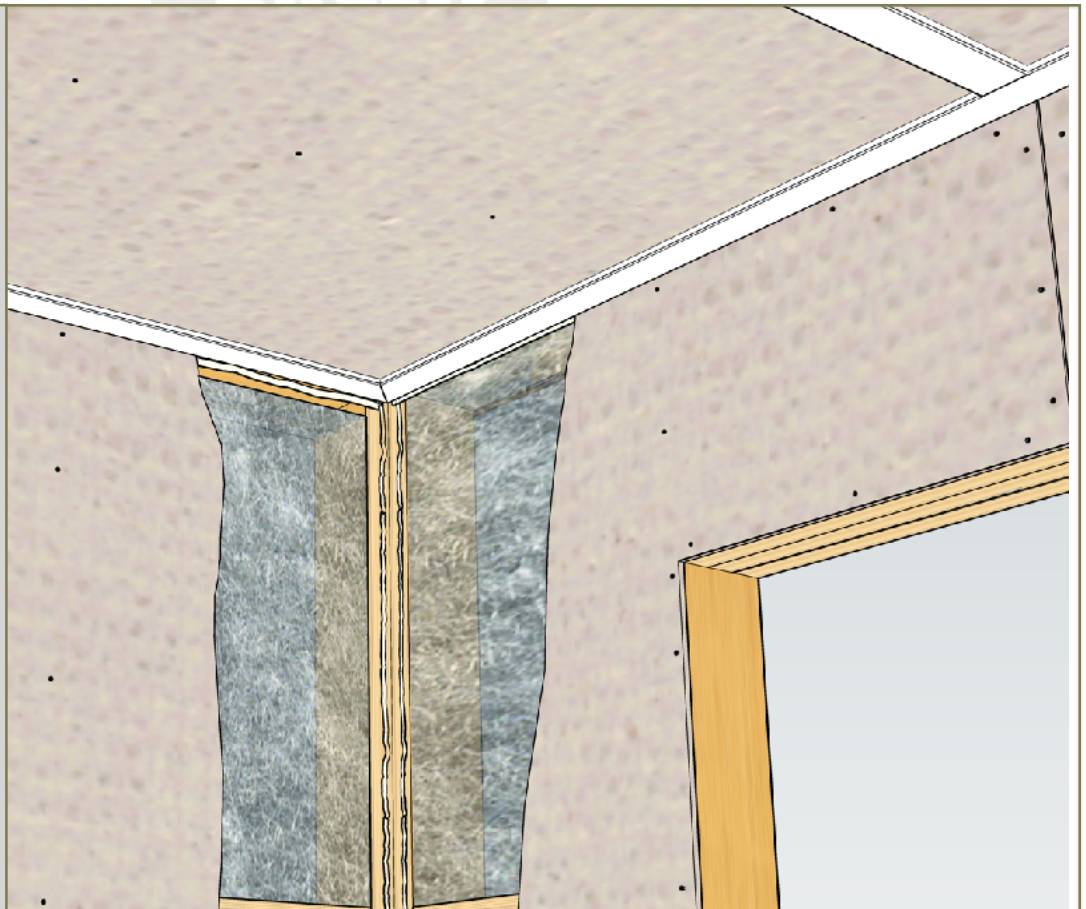
Polyfilla is in place to ensure only fine gaps between joins are back filled.



7 : PREPARATION : 6

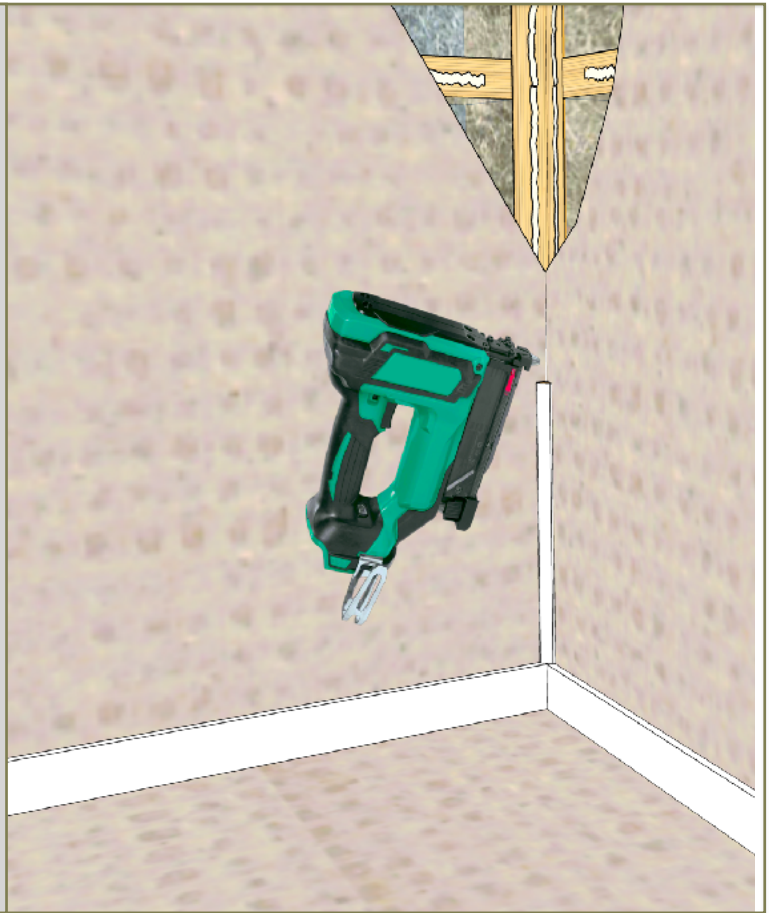
Ceiling profile fitted to Magnum Board® EZY-LINE™ joins and perimeter ceiling to wall junction.

Ceiling profiles must be fitted before internal and external corner profiles.



7 : PREPARATION : 7

Showing installation of internal corner profile using a battery powered pin gun.



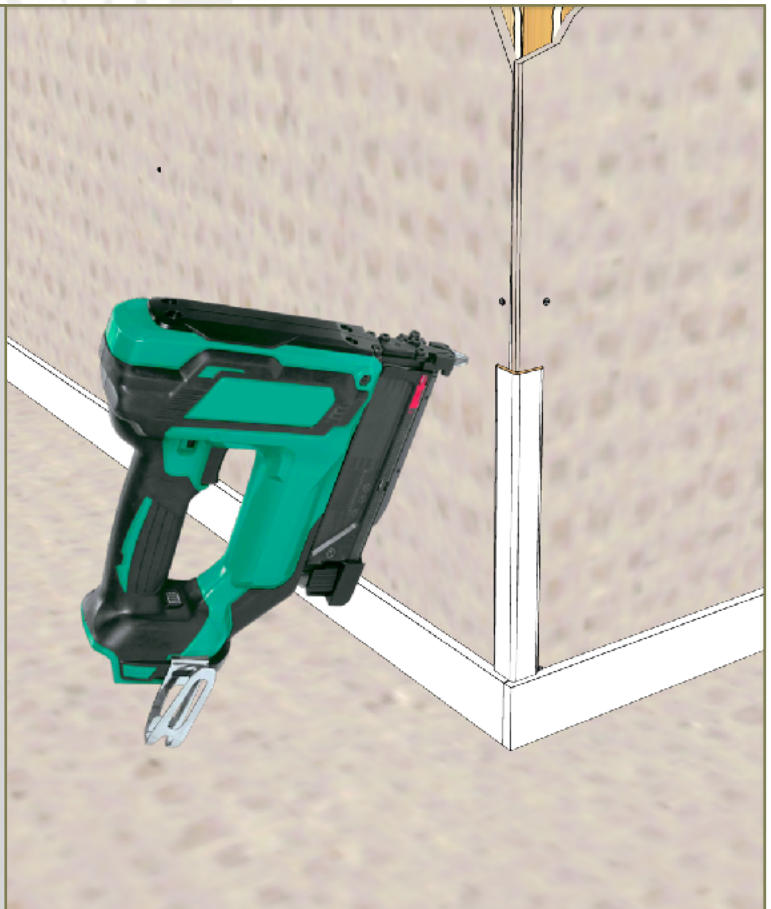
7 : PREPARATION : 8

Showing installation of external profile and skirting using a battery powered pin gun.

Ceiling profiles and external and internal corner profiles are to be installed before skirtings.

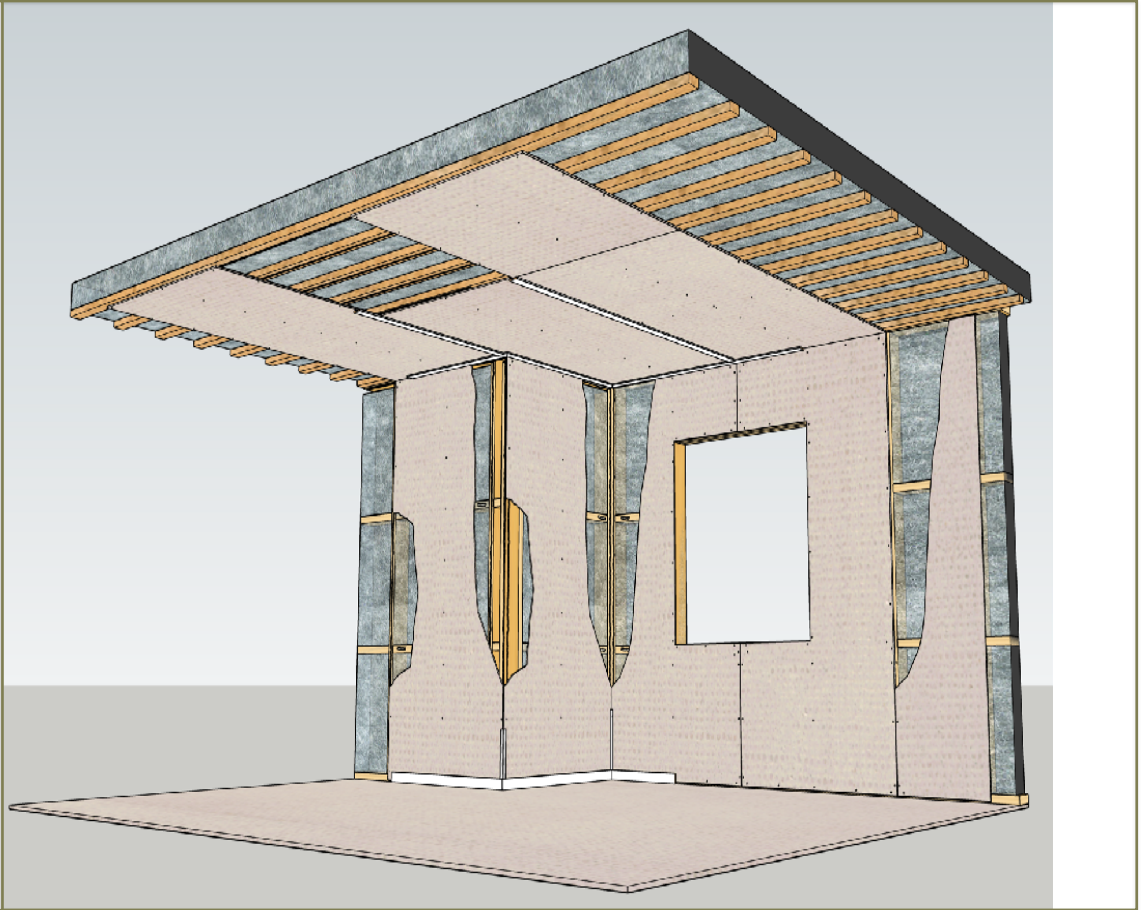
External and internal profiles can be marked to establish the position they are to be trimmed using a renovator tool.

Once trimmed skirtings can be fitted neatly into place and pinned.



7 : PREPARATION : 9

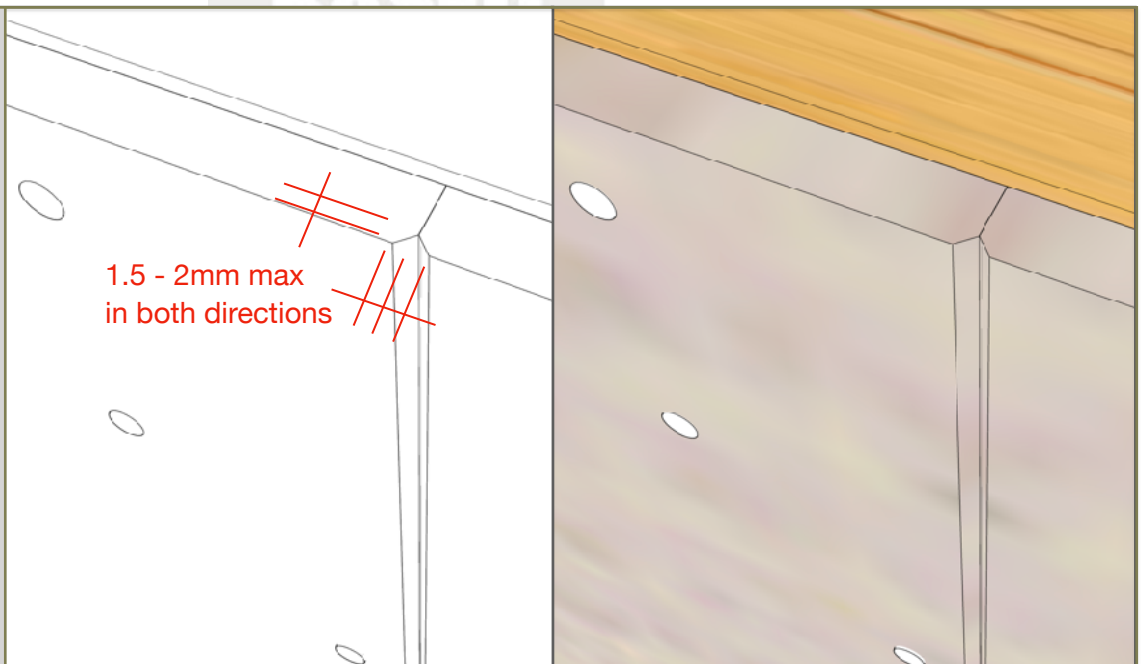
Showing ceiling and wall area installed with profiles, ceiling, internal and external corners and skirting installed.



7 : PREPARATION : 10

Picture showing micro-bevel edge applied to Magnum Board® EZY-LINE™.

The micro-bevel can be established using sanding block and 120 grit sandpaper positioned at a 45-degree angle, or hand-held router trimmer with a 45-degree shaped tungsten carbide router cutter with roller bearing to end of cutter.



Micro-bevel edge show in both line and illustrative form only in order to clarify. The bevel is to be no more than 2mm, preferably 1.5mm. For best finish use a powered hand trimmer and finish with 120 grit sandpaper.



8 : INSTALLATION

: Installation to ceiling

The pre-inspection check lists are for the purpose of ensuring the area to be lined is prepared correctly.

Begin with considering the installation pattern and openings you require. Board sizes should be equal across the ceiling area for best appearance when ceiling profiles are installed. Openings for light fittings must be cut using a rotating hole saw.

Apply Mapei S9971K adhesive in a continuous form to the battens supporting the sheet to be installed. Ensure adhesive is set back from the boards edge to reduce the risk of spread to the next board and to reduce the amount applied.

Position board using a panel lifter or with assistance. Ensure the board is pressed tightly to the battens and aligned between walls over the ceiling area. Apply a continuous bead of adhesive to achieve a consistent levelling when pressure is applied to the board.

Begin screw fixing from the centre of the board in the board's length before completing installation to the board's perimeter.

Duplicate the process to complete the ceiling area before installation to wall areas.

: Installation to walls

Bracing & openings can be considered by accessing this link

http://www.healthbasedbuilding.co.nz/documents/MagnumBoardBracingManual_v2.1_10.5.21.pdf

The pre-inspection check lists are for the purpose of ensuring the area to be lined is prepared correctly.

Begin installation from an internal corner. Do not rely on the internal corner framing line to establish correct vertical positioning of the board. Correct vertical positioning is established by first placing a spirit level to the vertical edge.

Apply Mapei S9971K adhesive in a continuous form to framing receiving screw fixings. Ensure adhesive is set back from the boards edge for the purpose of preventing adhesive spreading over to the next board and to reduce the amount applied.

Position the board firmly against wall framing to ensure adhesive compressed and establishing a level surface in the board.

Remove any excess adhesive protruding from boards edge before installation of another board to ensure adhesive is not brought into the micro-bevel. Only Polyfilla is to be applied into the joint between boards.

Begin screw fixing from the centre of the board in the board's length before completing installation to the board's perimeter.

Apply Polyfilla to the edge of board in a continuous bead before continuing the installation process.

Push board up tight to the edge of the board installed to ensure Polyfilla has been forced from the joint between boards.

Proceed to install the next board.



8 : INSTALLATION (cont.)

Clean excess Polyfilla from the boards surface using spatula and damp cloth.

Proceed to duplicate the installation process to complete installation of the wall area.

: Installing profiles

The ceiling profile must be installed before internal corner, external corner, and skirting profiles.

The ceiling profile must be installed using stainless steel pins spaced 300 down the length of the profile with two pins aligned 5mm in from outside edges and 20mm in from ends.

The internal corner profile must be installed before skirting profiles using a single stainless-steel pin to the centre of the internal profile with pins spaced 300mm apart down the length of the profile and 20mm in from ends.

The external corner profile must be installed before skirting profiles using stainless steel pins spaced 300 apart down the length of the profile with pins 10mm in from outside edges and 20mm in from ends.

Mapei S9971K adhesive is to be applied to the back face of ceiling internal and external corner profiles. Ensure application of adhesive is central to the profile to prevent adhesive being forced outside the line of the profile where it needs to be removed from the profile and face of board.

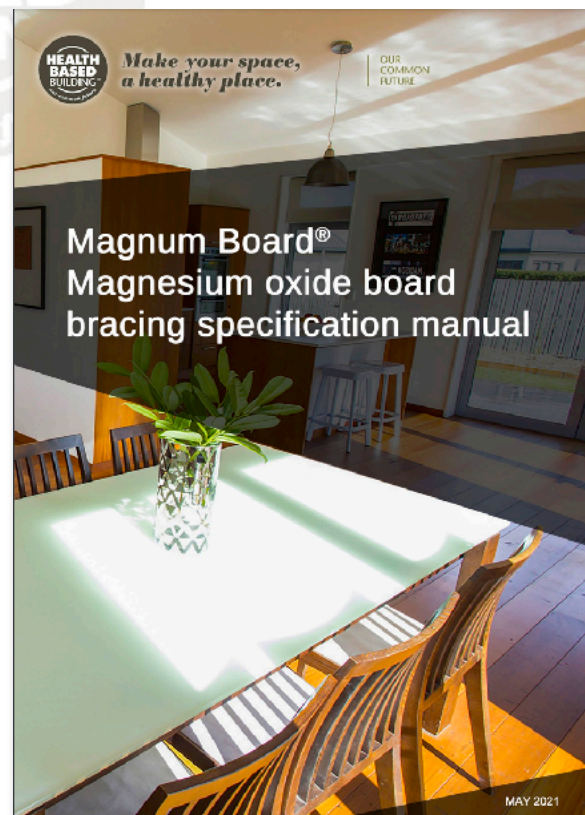
Internal and external corner profiles can be installed over length with the finished length cut to size once marked to the skirting dimension. For this method a renovator tool can be used to trim internal and external profiles to size after installation.

: Painting

http://www.healthbasedbuilding.co.nz/documents/HTL0106_ForeverbreathePaint-InteriorGuide_v5_FA_web-Combined_v1.0_7.4.21.pdf

: Bracing

http://www.healthbasedbuilding.co.nz/documents/MagnumBoardBracingManual_v2.1_10.5.21.pdf





9 : MAGNUM BOARD MSDS



Material Safety Data Sheet

MSDS No. : MBGEP - 032107 - 5
Magnum Board® Brand Products

SECTION 1 : PRODUCT INFORMATION

Use :

- **Exterior** : Sheathing, ceiling board, drop ceiling, siding, cladding and trim material
- **Interior** : Wallboard, ceiling board, tile backer board, underlayment and trim materials.
- **Systems** : Structural Insulated Panels (SIPS)
: Exterior Insulated Finish Systems (EIFS)

Other uses : <https://www.healthbasedbuilding.com/magnum-board>

SECTION 2 : COMPOSITION / INFORMATION ON INGREDIENTS

Ingredient	CAS No.	Hazard Class
Magnesium Oxide	1309-48-4	None
Magnesium Chloride	7786-30-3	None
Cellulose	9004-34-6	None
Perlite	93763-70-3	None
Proprietary Additives	N / A	None
Fibreglass Scrim	65997-17-3	None





SECTION 3 : HAZARDS IDENTIFICATION

Emergency Overview :

- Non-toxic, non-explosive, not a fire hazard.

Primary Routes of Entry :

Eyes :

- Dust may irritate the eyes from mechanical abrasion causing watering and redness.

Skin :

- Dust may cause irritation of the skin from friction but cannot be absorbed through intact skin.

Ingestion :

- Unlikely under normal conditions of use, but swallowing the dust from this product may result in irritation to the mouth and gastrointestinal tract.

Inhalation :

- Dust may cause irritation of the nose, throat, and airways, resulting in coughing and sneezing.
- Certain susceptible individuals may experience wheezing (spasms of the bronchial airways) on inhaling dust during sanding or sawing operations.

SECTION 4 : FIRST AID MEASURES

Eyes :

- Remove contact lens. Flush with running water or saline for at least 15 minutes.
- Seek medical attention if redness persists or if visual changes occur.

Skin :

- Wash with mild soap and water.
- Contact physician if irritation persists or later develops.

Ingestion :

- If ingested, dilute by drinking large amounts of water.
- Do not induce vomiting.
- Seek medical attention.
- If unconscious, loosen tight clothing and lay the person on his / her side.
- Give nothing by mouth to an individual who is not alert and conscious.
- Seek medical attention.

Inhalation :

- Remove person to fresh air.
- If shortness of breath or wheezing develops, seek medical attention.





Notes to Physician or First Aid Providers :

- Treat symptomatically.

SECTION 5 : FIRE-FIGHTING MEASURES

Magnum™ Building Products line of “Magnum Board®” Products are non flammable, non explosive and non combustible.

Fire and Explosion Hazard :

- Flash Point :Not applicable.
- Auto-ignition :Not applicable.

Extinguishing Media :

- This material is non combustible.
- Appropriate extinguishing media should be used for surrounding fire.

Fire Fighting :

- Fire fighting personnel should wear normal protective equipment.

SECTION 6 : ACCIDENTAL RELEASE MEASURES

No special precautions are necessary to pick up product that has been dropped. The following applies only to spills or releases of dust generated during cutting or sanding Magnum Board®.

Precautions :

- Good housekeeping practices are necessary for cleaning up areas where dust has been produced. Take measures to either eliminate or minimise the creation of dust.
- Wherever possible, practices likely to generate dust should be controlled with engineering controls such as local exhaust ventilation, dust suppression with water and containment, enclosure or covers.

Cleanup Methods :

- A fine water spray may be used to suppress dust when sweeping - dry sweeping is not recommended. Vacuuming with an industrial vacuum cleaner outfitted with a high-efficiency particulate (HEPA) filter is recommended over sweeping. Waste may be disposed of by landfill in compliance with federal, provincial, state and local requirements governing non-toxic mineral materials.
- Avoid using materials and products that are incompatible with this product.
(Refer to section 10.)





SECTION 7 : HANDLING AND STORAGE

Handling and Storage Products in their intact state do not present a health hazard. The controls below apply to dust generated from the boards by cutting, drilling, routing, sawing, crushing, or otherwise abrading, and cleaning or moving sawdust.

Other Precautions :

- Even though Magnum Board® has been tested and deemed non toxic, Magnum Building Products recommends that exposure to dust be kept as low as reasonably possible.
- Respirable levels should not exceed those specified by OSHA and MSHA and identified in this MISDS. Exposure to respirable (fine) dust depends on a variety of factors, including activity rate (i.e. cutting rate), method of handling (i.e. electric shears), environmental conditions (i.e. weather conditions, workstation orientation) and control measures used.
- Wherever possible, practices likely to generate dust should be carried out in well ventilated areas (i.e. outside). The work practices and engineering controls set out in Section 8 should be followed as precautions to reduce dust exposures.

SECTION 8 : EXPOSURE CONTROLS / PERSONAL PROTECTION

Engineering Controls

Cutting Outdoors :

- Magnum Building Products recommends positioning cutting station so that wind will blow dust away from user or others in working area and allow for ample dust dissipation.
- Use one of the following methods based on the required cutting rate and job site conditions.
 - **Best :**
 - Score and snap using carbide-tipped scoring knife or utility knife (Ability to use this method depends on thickness of Magnum Board® being installed.)
 - Fibre-cement board shears (electric or pneumatic).
 - **Better :**
 - Dust reducing circular saw equipped with appropriate blade and HEPA vacuum extraction.
 - **Good : (for low to moderate cutting only)**
 - Dust reducing circular saw with appropriate saw blade.
 - Always use correct tools when executing cutting operations.





Ventilation :

- Use adequate general or local exhaust ventilation to keep airborne concentrations below the permissible exposure limit.

Respiratory Protection :

- Dust mask is recommended.

Eye Protection :

- When cutting material, dust resistant safety goggles / glasses should be worn and used in compliance with ANSI Standard Z87.1-1-1989 and applicable
- OSHA (i.e. 29 CFR 1910.133) standards.

Skin Protection :

- Loose comfortable clothing should be worn. Magnum Building Products recommends that direct skin contact with dust and debris be avoided when possible by wearing long sleeved shirts and long trousers, a cap or hat, and gloves.

Sanding / Drilling / Other Machining :

- If sanding, drilling, or other machining is conducted, Magnum Building Products recommends wear a NIOSH-approved dust mask.

Important Notes :

- For maximum protection (lowest respirable dust production), Magnum Building Products recommends always using “Best” level cutting methods where feasible.
- Always use a circular saw blade that is appropriate for the specific operation being undertaken.
- Dry sweeping is not the preferred clean up method - Magnum Building Production suggests wet suppression methods or HEPA vacuum.
- It is not recommended that a grinder or continuous rim diamond blade be used for cutting.
- Always follow tool manufacturer’s safety recommendations.

SECTION 9 : PHYSICAL AND CHEMICAL PROPERTIES

Appearance :

- Various colours depending on application, each with varying dimensions according to product used.

Odour :

- Very mild

Physical State :

- Solid sheets





- **Vapour Pressure :**
 - Not relevant.

- **Specific Gravity :**
 - Not relevant.

- **Flammability Limits :**
 - Not relevant.

- **Boiling Point :**
 - Not relevant

- **Melting Points :**
 - Not relevant.

- **Flash Point :**
 - Not relevant.

- **Auto-ignition Temperature :**
 - Not relevant.

- **Volatility :**
 - Not relevant.

- **Solubility in Water :**
 - Not relevant.

- **Evaporation rate :**
 - Not applicable.

NFPA Ratings (Scale 0 – 4)

- Health = 1
- Flammability = 0
- Reactivity = 0
- Personal Protection = E





SECTION 10 : STABILITY AND REACTIVITY

Stability :

The Magnum Board® products identified in section 1 are stable under ordinary conditions.

Conditions to Avoid :

- Excessive dust generation without proper dust mask protection.

Materials to Avoid :

Incompatibility :

- Hydrofluoric acid will dissolve Magnesium Oxide and can generate Magnesium Chloride fumes.

SECTION 11 : TOXICOLOGICAL INFORMATION

Magnum Board® products are non toxic in their intact form. The following applies to dust that may be generated during cutting and sanding.

Chronic Effects :

Inhaled :

- Repeated and prolonged overexposures to dust may cause increased risk of bronchitis. It is possible that repeated inhalation exposure to Magnum Board® fibre dust over time may lead to inflammation of the lungs in humans.
- All necessary precautions should be taken to prevent inhalation of dust to prevent these problems.

Inhalation :

- Remove to fresh air.
- If shortness of breath or wheezing develops, seek medical attention.

SECTION 12 : ECOLOGICAL INFORMATION

Because Magnesium Oxide is a naturally-occurring material, releases that may occur into the environment are not expected to leave any hazardous material that could cause a significant adverse impact.

SECTION 13 : DISPOSAL CONSIDERATIONS

Disposal of material as an inert, inorganic mineral - in conformance with federal, provincial, state and local regulations. Magnum Board® is not an RCRA hazardous waste.





SECTION 14 : TRANSPORT INFORMATION

There are no special requirements for storage and transport of Magnum Board®.

SECTION 15 : REGULATORY INFORMATION

UN No.	None allocated
Dangerous goods class	None allocated
Hazchem code	None allocated
Poisons schedule	None allocated
Packing group	None allocated
Label	Not a DOT hazardous material

CERCLA Hazardous Substance (40 CFR Part 302)

DOT hazard classification	None
Placard requirement	Not a DOT hazardous material
Listed substance	No
Unlisted substance	No
Reportable quantity (RQ)	No
Characteristics	Not applicable
RCRA waste number	Not applicable

SECTION 16 : OTHER INFORMATION

Preparation of Information and Disclaimer :

This form has been prepared to meet current Federal OSHA hazard communication regulations and is offered without any warranty or guarantee of any type. Magnum Building Products cannot control the use of its products, and therefore specifically disclaims liability and responsibility arising from the use, misuse and/ or alteration of its products.

The information contained in this MSDS was produced without independent scientific or medical studies analysing the effects of Magnum Board® dust upon human health. The information contained herein is based upon scientific and other data. Magnum Building Products believes is





valid and reliable and provides the basis for this MSDS. The information contained herein relates only to specific materials listed in the document. It does not address the effects of Magnum Board® dust when used in combination with other materials or substances, or when used in other processes. Because conditions of use are beyond Magnum Building Products control, the company makes no representations, guarantees or warranties, either express or implied warranties as to the fitness of the product for use, and assume no liability related to the information contained above.

Magnum Building Products requires, as a condition of use of its products, that purchasers comply with all applicable Federal, Provincial, State, and Local health and safety laws, regulations, orders, requirements, and strictly adhere to all instructions and warnings which accompany the product.

10 : PRE-CHECKLIST

UN No.	None allocated
Dangerous goods class	None allocated
Hazchem code	None allocated
Poisons schedule	None allocated
Packing group	None allocated
Label	Not a DOT hazardous material

DOT hazard classification	None
Placard requirement	Not a DOT hazardous material
Listed substance	No
Unlisted substance	No
Reportable quantity (RQ)	No
Characteristics	Not applicable
RCRA waste number	Not applicable



11 : FINAL CHECKLIST

: CHECKLIST Before Application of FX Interior Topcoat

- ✓ Temperature between 18-25°C and 50% humidity
- ✓ FX product mixed correctly and conditioned to room temperature
- ✓ FX product positioned away from contact with concrete floor
- ✓ Micro-bevel edges to Magnum Board® EZY-LINE™ level with joint correctly filled
- ✓ Screw and pin penetrations free on sharp edges and loose particulate
- ✓ Surfaces cleaned of dust and particulate that could impact FX adhesion
- ✓ Health and Safety plan in place inclusive of dust protection

: CHECKLIST Before Sanding

- ✓ FX Interior Topcoat has cured and applied correctly
- ✓ Waste product has been removed for the working area
- ✓ Products considered to be impacted by fine dust are covered or removed
- ✓ Correct tools and equipment are assembled
- ✓ Health and Safety plan in place inclusive of dust protection

: CHECKLIST After Sanding & Before Painting

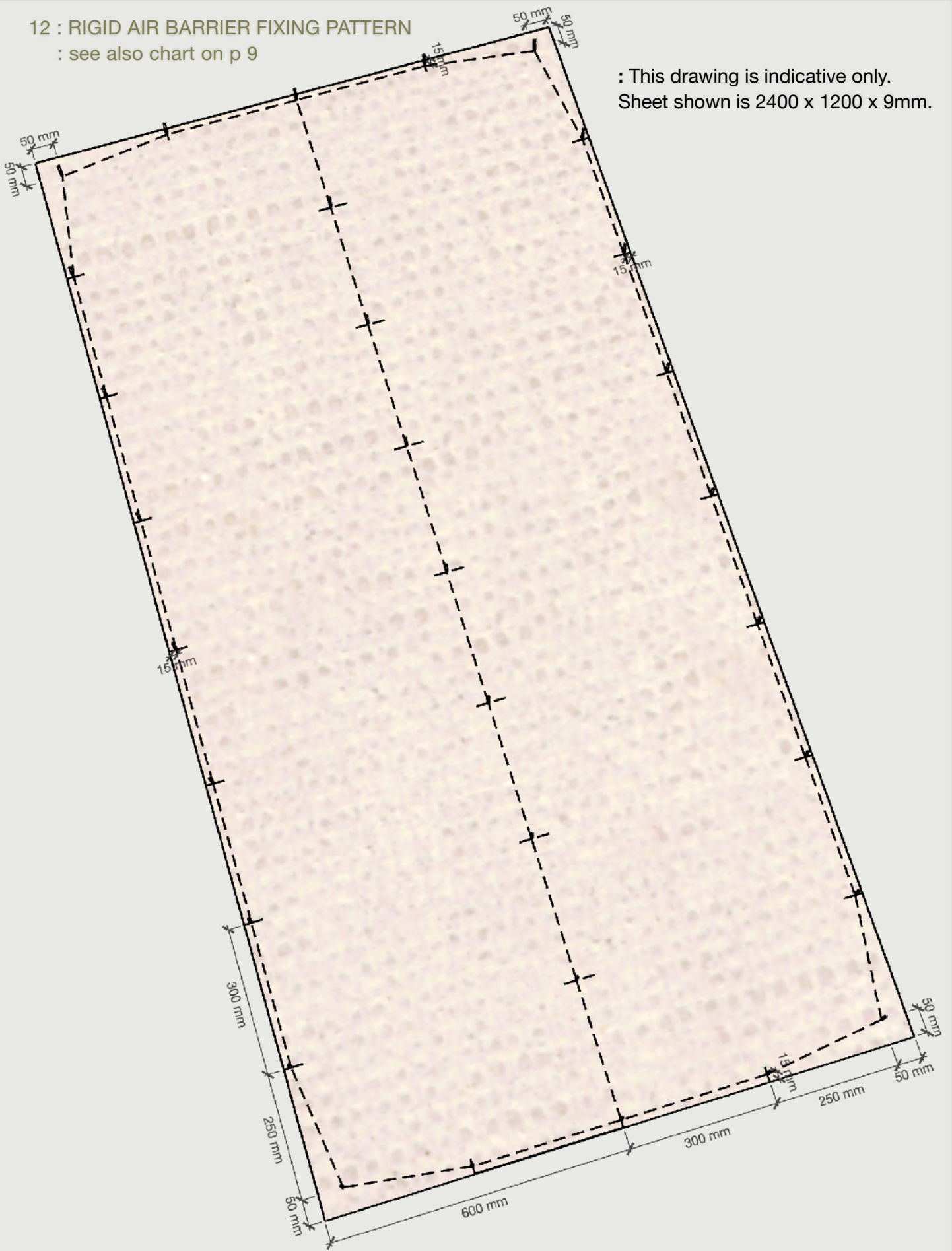
- ✓ FX Interior Topcoat has been sanded correctly at point of application to Magnum Board® EZY-LINE™ and profiles
- ✓ Micro-bevels between Magnum Board® EZY-LINE™ have been prepared correctly
- ✓ Surfaces have dust and particulate that could impact paint adhesion removed

Company name :		Job # :
Address of job :		
Contractor :		
Date / / :		



12 : RIGID AIR BARRIER FIXING PATTERN
: see also chart on p 9

: This drawing is indicative only.
Sheet shown is 2400 x 1200 x 9mm.





*Make your space,
a healthy place.*

OUR
COMMON
FUTURE

