



## MAGNUM BOARD® & BATTEN SYSTEM INSTALLATION GUIDE

✓ 100% Sustainable

✓ Mould and insect proof

✓ Breathable

✓ VOC Free

✓ Silica Free

✓ High moisture resistance

✓ High impact resistance

✓ High resistance to air transfer

✓ Non-combustible with zero flame spread

✓ CO<sub>2</sub> negative

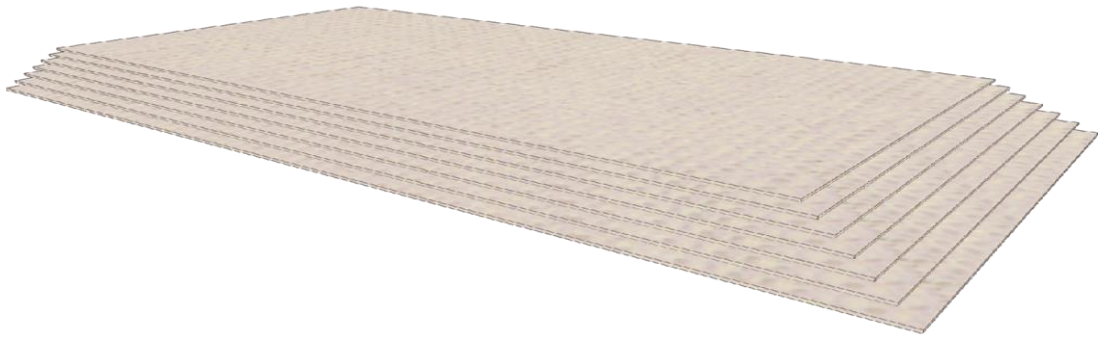
Magnum Board delivers the new standard in high performance sustainable, health-based building. Sustainably manufactured and free of harmful chemicals, Magnum Board provides superior performance and environmental benefits when compared to traditional wood fibre, plywood, gypsum, and cement-based substrates. Magnum Board is independently appraised both globally and in New Zealand for interior and exterior applications. With numerous applications possible in one high quality composition, Magnum Board is a uniquely versatile construction material that provides exceptional performance and total build value.

## Contents

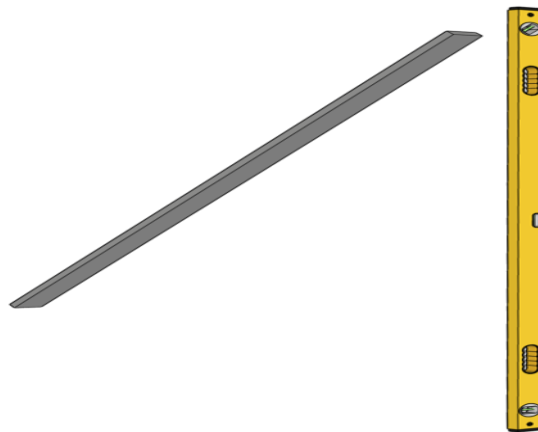
<b>1: MATERIALS, PRODUCT, TOOLS, AND FASTENERS.....</b>	<b>3</b>
<b>2: IMPORTANT INFORMATION .....</b>	<b>7</b>
<b>3: RESPONSIBILITY .....</b>	<b>8</b>
<b>4: WARRANTY .....</b>	<b>8</b>
<b>5: MATERIAL SAFETY, HANDLING, MAINTENANCE AND STORAGE REQUIREMENTS.....</b>	<b>8</b>
<b>6: PERIOD OF EXPOSURE AFTER INSTALLATION AND BEFORE COATING .....</b>	<b>8</b>
<b>7: PREPARATION &amp; SURFACE FINISHES .....</b>	<b>9</b>
<b>8: INSTALLATION PROCEDURE: CUTTING .....</b>	<b>9</b>
<b>9: INSTALLATION PROCEDURE: FIXING .....</b>	<b>9</b>
<b>10: FULL BOARD INSTALLATION 2.4m x 1.2m, 2.7m x 1.2m, 3m x 1.2m.....</b>	<b>9</b>
<b>11: FIXING PATTERN .....</b>	<b>10</b>
<b>12: PART BOARD INSTALLATION .....</b>	<b>10</b>
<b>13: PRE-INSTALLATION CHECKS.....</b>	<b>11</b>
<b>14: POST- INSTALLATION CHECKS.....</b>	<b>11</b>
<b>15: MAGNUM BOARD MSDS.....</b>	<b>12</b>
Magnum Board Material Safety Data Sheet.....	12
<b>16: MAGNUM BOARD &amp; BATTEN CONSTRUCTION DETAILS .....</b>	<b>19</b>

# 1: MATERIALS, PRODUCT, TOOLS, AND FASTENERS.

Magnum Board® Dimensions 2.4m x 1.2m x 9mm. 2.7m x 1.2m x 9mm. 3.0m x 1.2m x 9mm.



Straight Edge and Spirit Level. Minimum 1.8m in length



Simpson Strong Tie screw for timber framing code: SSDHSD50TSA  
12-gauge x 50mm #2 Square Drive Pre-Bore Tip  
Stainless Steel 316



HEPA Extraction System with recommended cutting equipment.



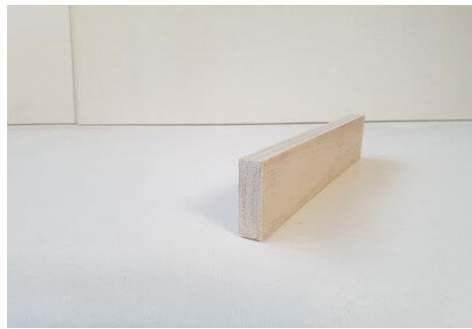
Earthen 65 x 21 decorative exterior batten for joins, window, and door openings.

[Earthen Radiata Engineered Decorative Batten for Magnum Board™ Board and Batten System - Health Based Building](#)



Earthen 65 x 20 internal cavity batten

[Earthen Radiata 65x20mm Cavity Batten - Health Based Building](#)



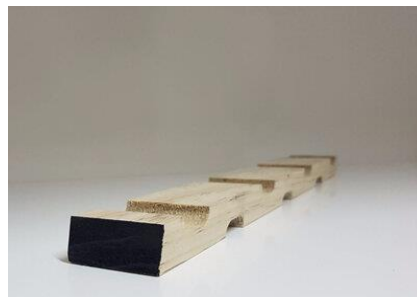
Earthen 45 x 20 internal cavity batten

[Earthen Radiata 45x20mm Cavity Batten - Health Based Building](#)



Earthen 45 x 20 castellated horizontal internal batten

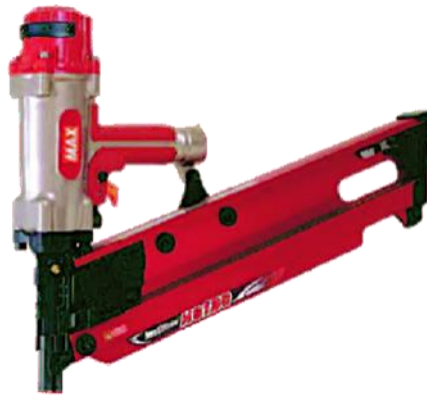
[Earthen Radiata Exterior Castellated 45x20mm Cavity Batten - Health Based Building](#)



SIFCO 50 x 2.8 SS nails PN FRP50V8SS/6 for interior cavity batten installation.



SIFCO Nail Gun with No Mar Tip for interior cavity batten installation.



Paslode 65 x 2.8 SS Nails PN B20560 Round Drive for interior cavity batten installation.



Paslode Nail Gun with No Mar Tip B20544G for interior cavity batten installation.



Makita Quick Drive Attachment PROSDDM25KA for installation of Magnum Board & Batten



Battery gun for screw fixing exterior decorative battens



Recommended screws fixing for exterior decorative batten installation at board-to-board joins and 600mm centres supported by framing. 8-to-10-gauge x 65mm stainless.



38mm x 8-10-gauge stainless screws are recommended when installing exterior decorative battens at locations where the interior batten is not directly supported by framing.

65mm x 10-gauge stainless screws are recommended when installing exterior decorative battens at location where the interior batten is fully supported by framing.



Jigsaw.



Hole saw.



Mapei PU35.



## 2: IMPORTANT INFORMATION

Magnum Board® & Batten can be installed to solid timber framing and LVL framing in compliance with local building codes.

Stud spacing's must not to exceed 600mm centres.

Interior cavity batten spacings are to align with the position of decorative exterior batten spacings with interior battens fully supported by framing where they align with the perimeter of Magnum Board, Magnum Board joins and 600mm framing spacings.

Timber framing moisture content should be 18% maximum. Framing quality must be straight and level to a standard that supports Magnum Board® to all surfaces in contact with cavity batten. Installation to buckled or bent framing will result in tension within Magnum Board® which can establish cracking over time.

### **3: RESPONSIBILITY**

It is the responsibility of the installer to inspect their workplace prior to beginning the installation of Magnum Board® to ensure installed work will meet the owner / contractor's requirements. Refer to installation Checklist on page?

### **4: WARRANTY**

While every effort has been made to ensure a satisfactory outcome with respect to the use of Magnum Board® & Batten along with all Magnum Board® products - no dialogue or negotiation will be considered if any method or third-party component has been used apart from those described in this technical manual. Any warranty - written or implied - will be subject to examination and will apply solely to the quality of the Magnum Board® product being deficient at the point of purchase only, or the subsequent deficient performance of the product once the correct method of installation has been determined. Any deficient performance resulting from the application of a third-party product, will become the responsibility of that products manufacturer and / or agents. Magnum Board® and its associated agents will not be held responsible for any such incident or outcome. [MagnumBoardWarrantyDocument30-year.pdf](https://healthbasedbuilding.co.nz/documents/MagnumBoardWarrantyDocument30-year_v1.0_29.10.24.pdf)  
[https://healthbasedbuilding.co.nz/documents/MagnumBoardWarrantyDocument30-year\\_v1.0\\_29.10.24.pdf](https://healthbasedbuilding.co.nz/documents/MagnumBoardWarrantyDocument30-year_v1.0_29.10.24.pdf)

### **5: MATERIAL SAFETY, HANDLING, MAINTENANCE AND STORAGE REQUIREMENTS**

Cutting and extraction equipment is shown in page? Products & Equipment.

Even though Magnum Board® is a non-toxic building material, always wear a dusk mask, safety glasses and follow MSDS Guidelines:

Never use a circular saw blade that is inappropriate for the specific operation being undertaken.

Never use a grinder or continuous rim diamond blade for cutting.

Never use a power saw indoors.

Never dry sweep - use wet suppression methods or HEPA vacuum.

It is good construction practice to marshal or stage the materials to be installed as close to the point of installation as possible.

When cutting Magnum Board® ensure the supporting structure is level and preventing distortion.

Distortion in Magnum Board® will establish inaccuracy in the edge being cut regardless of correct cutting equipment being involved.

Always protect all edges of Magnum Board® prior to and during installation.

Do not stack other materials on top of Magnum Board®.

During construction, ensure Magnum Board's® surface is kept clean and unmarked by the removal of any building material waste, soil, or any organic or other potential contaminant, before the application of decorative coverings and coatings.

### **6: PERIOD OF EXPOSURE AFTER INSTALLATION AND BEFORE COATING**

Magnum Board® must be stored inside, in a well-ventilated area, up off concrete floors, kept dry, out of direct sunlight and away from freezing conditions.

Using Magnum Board® in relation to other manufacturers products:



In case of an apparent conflict between the Magnum Board® instructions and those of a third party, contact [www.healthbasedbuilding.com](http://www.healthbasedbuilding.com) for clarification.

Installation Expertise

Magnum Board® is to be installed either by, or under the direct supervision of, a qualified building practitioner.

## 7: PREPARATION & SURFACE FINISHES

The surface of the Magnum Board® must be clean, dust and contaminant free prior to commencement of the coating process. **All cut or raw exposed edges must be coated.**

Painting options and application methods are Foreverbreathe Silicate Paint:

[https://healthbasedbuilding.co.nz/documents/TD-018-ForeverbreatheSilicatePaint\\_v1.8\\_17.8.22.pdf](https://healthbasedbuilding.co.nz/documents/TD-018-ForeverbreatheSilicatePaint_v1.8_17.8.22.pdf)

Resene Acrylic Paint

[https://healthbasedbuilding.co.nz/documents/ReseneExteriorPaintUserGuide\\_v2.0\\_13.7.22.pdf](https://healthbasedbuilding.co.nz/documents/ReseneExteriorPaintUserGuide_v2.0_13.7.22.pdf)

Wattyl Paint [https://healthbasedbuilding.co.nz/documents/WattylExteriorPaintUserGuide\\_v1.4\\_10.9.24.pdf](https://healthbasedbuilding.co.nz/documents/WattylExteriorPaintUserGuide_v1.4_10.9.24.pdf)

## 8: INSTALLATION PROCEDURE: CUTTING

Purpose: To define the guidelines for cutting and installing Magnum Board® & Batten.

Always use correct tools when executing cutting operations.

For general straight line cutting use the HEPA extraction system with recommended cutting equipment represented in section MATERIALS, PRODUCT, TOOLS, AND FASTENERS

Measure accurately and mark your cutting locations before cutting.

Circular cuts and irregular angle cuts such as electrical outlets, light receptacles, switches can be made using a cement board router bit or carbide tipped keyhole saw or a saber-saw. Mark and cut from face of Magnum Board®

## 9: INSTALLATION PROCEDURE: FIXING

Magnum Board® is screw fixed to timber or steel framing using screw fixings stated in the MATERIALS, PRODUCT, TOOLS, AND FASTENERS section.

Magnum Board® is to be installed vertically up tight edge to edge without sealant. Exterior decorative battens will provide protection from weather.

Magnum Board® end joins may be required to achieve lengths past 3m. End joins must involve Mapei PU35 exterior flexible sealant to the edge of one end join before pushing up tight to complete installation. End joins can be micro-bevelled to establish decorative appearance or cover by decorative exterior battens.

## 10: FULL BOARD INSTALLATION 2.4m x 1.2m, 2.7m x 1.2m, 3m x 1.2m

Screw fixing positions for full sheet installation and fixing around cut outs and flashing systems are as follows:

Fixing distance in from vertical edges and horizontal edges 15mm

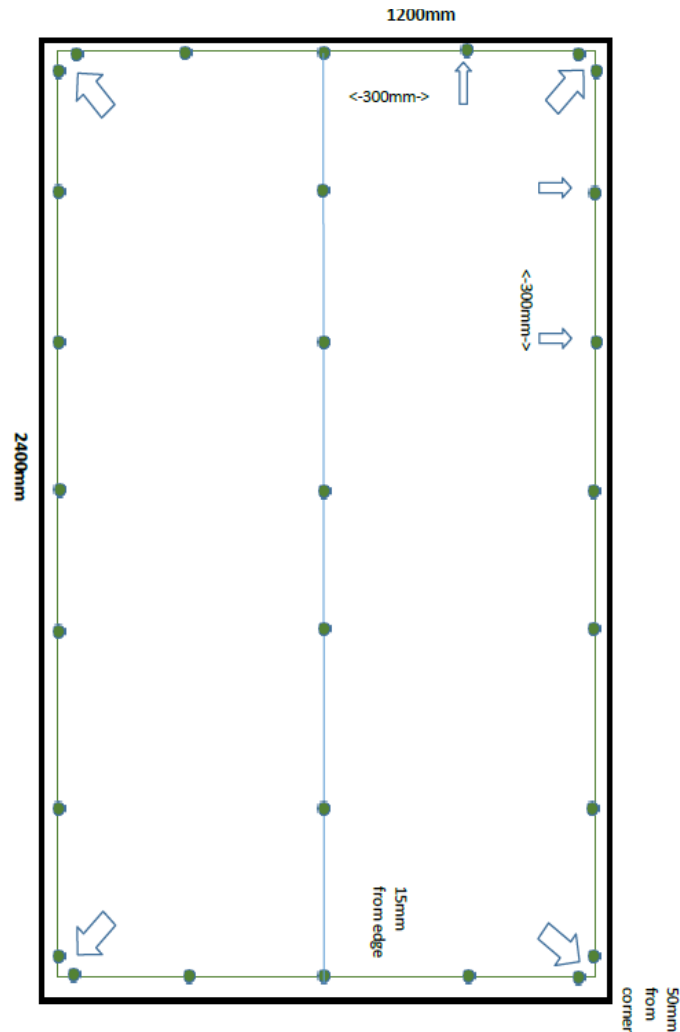
Fixing in from corner of vertical and horizontal edges 50mm

Fixing down 600mm centre of 1200mm wide boards.

Fixing spacings 250mm in from first fixing 50mm in from corners and maximum 300mm apart from that point to vertical edges and horizontal edges.

## 11: FIXING PATTERN

2400x1200x09mm, 2700x1200x09mm and 3000x1200x09mm wall and ceiling board sizes  
15mm in from perimeter edges  
50mm in from corners  
300mm apart along perimeter edges and 600mm mid lines



## 12: PART BOARD INSTALLATION

Where Magnum Board is installed in boards sizes less than full boards the fixing positions will mimic full board fixing positions where possible.

The maximum fixing spacing into vertical studs through interior cavity battens is 600mm

Installation of decorative exterior battens @ 600mm centres must be supported by interior cavity battens over studs.

Installation of decorative exterior battens at spacings other than 600mm must be supported by interior cavity battens. Fixings that prevent penetration past the supportive interior cavity batten where studs are not located directly behind are represented in the MATERIALS, PRODUCT, TOOLS, AND FASTENERS section.

Fixings to edges sections / cut outs around window and door openings will be 50mm back for the edge of Magnum Board into interior cavity battens supported by framing.

### **13: PRE-INSTALLATION CHECKS**

- Interior cavity battens are in the locations that support installation of exterior battens.
- Interior cavity battens are providing a level surface which ensures Magnum Board can be supported to all edges without distortion.

### **14: POST- INSTALLATION CHECKS**

- Magnum Board screw fixings are in the required locations including locations around window and door openings and flashings.
- Exterior battens are pulled up tight and in locations that provide joint protection and protection around window and door openings.

## 15: MAGNUM BOARD MSDS



### HOME of MAGNUMBOARD®

“The New Generation *GREEN* Building Material”

“Install It for Health-Install It for Life”

Sheathing & Trim Products

## Magnum Board Material Safety Data Sheet

MSDS No.: MBGEP-032107-5

Page 1 of 8

### Magnum Board® Brand Products

#### SECTION 1: COMPANY AND PRODUCT INFORMATION

Use: Exterior: Sheathing, ceiling board, drop ceiling, siding, cladding and trim material.

Interior: Wallboard, ceiling board, tile backer board, underlayment and trim materials.

Structural Insulated Panels (SIPS) and Exterior Insulated Finish Systems (EIFS)

Other uses viewable online at:  
<https://www.healthbasedbuilding.com/magnum-board>

#### SECTION 2: COMPOSITION / INFORMATION ON INGREDIENTS

<b><u>Ingredient</u></b>	<b><u>CAS No.</u></b>	<b><u>Hazard Class</u></b>
Magnesium Oxide	1309-48-4	None
Magnesium Chloride	7786-30-3	None
Cellulose	9004-34-6	None
Perlite	93763-70-3	None
Proprietary Additives	N/A	None
Fiberglass Scrim	65997-17-3	None

#### SECTION 3: HAZARDS IDENTIFICATION

**Emergency Overview:** Non-toxic, non-explosive and is not a fire hazard.

**Primary Routes of Entry:**

**Eyes:**

Dust may irritate the eyes from mechanical abrasion causing watering and redness.

**Skin:**

Dust may cause irritation of the skin from friction but cannot be absorbed through intact skin.

**Ingestion:**

Unlikely under normal conditions of use but swallowing the dust from this product may result in irritation to the mouth and gastrointestinal tract.

**Inhalation:**

Dust may cause irritation of the nose, throat, and airways, resulting in coughing and sneezing. Certain susceptible individuals may experience wheezing (spasms of the bronchial airways) on inhaling dust during sanding or sawing operations.

**SECTION 4: FIRST AID MEASURES**

**EYES:**

Remove contact lens. Flush with running water or saline for at least 15 minutes. Seek medical attention if redness persists or if visual changes occur.

**SKIN:**

Wash with mild soap and water. Contact physician if irritation persists or later develops.

**INGESTION:**

If ingested, dilute by drinking large amounts of water. Do not induce vomiting. Seek medical attention.

If unconscious, loosen tight clothing and lay the person on his / her side. Give nothing by mouth to an individual who is not alert and conscious. Seek medical attention.

**INHALATION:**

Remove to fresh air. If shortness of breath or wheezing develops, seek medical attention.

**NOTES TO PHYSICIAN OR FIRST AID PROVIDERS:**

Treat symptomatically.

**SECTION 5: FIRE-FIGHTING MEASURES**

Magnum™ Building Products line of “Magnum Board®” Products are nonflammable, non-explosive and noncombustible.

**Fire and Explosion Hazard**

**Flash Point:** Not applicable.

**Auto-ignition:** Not applicable

**Extinguishing Media:**

This material is noncombustible. Appropriate extinguishing media should be used for surrounding fire.

**Fire Fighting:**

Firefighting personnel should wear normal protective equipment.

**SECTION 6: ACCIDENTAL RELEASE MEASURES**

No special precautions are necessary to pick up product that has been dropped. The following applies only to spills or releases of dust generated during cutting or sanding Magnum Board®.

**Precautions:**

Good housekeeping practices are necessary for cleaning up areas where dust has been produced. Take measures to either eliminate or minimize the creation of dust.

Wherever possible, practices likely to generate dust should be controlled with engineering controls such as local exhaust ventilation, dust suppression with water and containment, enclosure or covers.

**Cleanup Methods:**

A fine water spray may be used to suppress dust when sweeping (dry sweeping is not recommended). Vacuuming with an industrial vacuum cleaner outfitted with a high-efficiency particulate (HEPA) filter is recommended over sweeping. Waste may be disposed of by landfill in compliance with federal, provincial, state and local requirements governing non-toxic mineral materials

Avoid using materials and products that are incompatible with this product. (Refer to section 10.)

**SECTION 7: HANDLING AND STORAGE**

**Handling and Storage** Products in their intact state do not present a health hazard. The controls below apply to dust generated from the boards by cutting, drilling, routing, sawing, crushing, or otherwise abrading, and cleaning or moving sawdust.

**Other Precautions:**

Even though Magnum Board® has been tested and deemed nontoxic, Magnum Building Products recommends that exposure to dust be kept as low as reasonably possible. Respirable levels should not exceed those specified by OSHA and MSHA and identified in this MSDS. Exposure to respirable (fine) dust depends on a variety of factors, including activity rate (i.e. cutting rate), method of handling (i.e. electric shears), environmental conditions (i.e. weather conditions, workstation orientation) and control measures used. Wherever possible, practices likely to generate dust should be carried out in well ventilated areas (i.e. outside). The work practices and engineering controls set out in Section 8 should be followed as precautions to reduce dust exposures.

**SECTION 8: EXPOSURE CONTROLS / PERSONAL PROTECTION**

**Engineering Controls**

**Cutting Outdoors:**

1. Magnum Building Products recommends positioning cutting station so that wind will blow dust away from user or others in working area and allow for ample dust dissipation.
2. Use one of the following methods based on the required cutting rate and jobsite conditions.

**Best**

- Score and snap using carbide-tipped scoring knife or utility knife (Ability to use this method depends on thickness of Magnum Board® being installed.)
- Fibercement board shears (electric or pneumatic).

**Better**

- Dust reducing circular saw equipped with appropriate blade and HEPA vacuum extraction.

**Good** (for low to moderate cutting only)

- Dust reducing circular saw with appropriate saw blade.

Always use correct tools when executing all cutting operations.

**Ventilation:**

Use adequate general or local exhaust ventilation to keep airborne concentrations below the permissible exposure limit.

**Respiratory Protection:**

Dust mask is recommended.

**Eye Protection:**

When cutting material, dust resistant safety goggles / glasses should be worn and used in compliance with ANSI Standard Z87.1-1-1989 and applicable OSHA (i.e. 29 CFR 1910.133) standards.

**Skin Protection**

Loose comfortable clothing should be worn. Magnum Building Products recommends that direct skin contact with dust and debris be avoided when possible, by wearing long sleeved shirts and long trousers, a cap or hat, and gloves.

**Sanding / Drilling / Other Machining:**

If sanding, drilling, or other machining is conducted, Magnum Building Products recommends wear a NIOSH-approved dust mask.

**Important Notes:**

1. For maximum protection (lowest respirable dust production), Magnum Building Products recommends always using "Best" level cutting methods where feasible.
2. Always use a circular saw blade that is appropriate for the specific operation being undertaken.
3. Dry sweeping is not the preferred clean up method - Magnum Building Production suggests wet suppression methods or HEPA vacuum.
4. It is not recommended that a grinder or continuous rim diamond blade be used for cutting.
5. Always follow tool manufacturer's safety recommendations.

<b>SECTION 9: PHYSICAL AND CHEMICAL PROPERTIES</b>
--

**Appearance:**

Various colors depending on application, each with varying dimensions according to product used.

**Odor:**

Very mild

**Physical State:**

Solid boards



**Vapor Pressure:**

Not relevant.

**Specific Gravity:**

Not relevant.

**Flammability Limits:**

Not relevant.

**Boiling Point:**

Not relevant

**Melting Points:**

Not relevant.

**Flash Point:**

Not relevant.

**Auto-ignition Temperature:**

Not relevant.

**Volatility:**

Not relevant.

**Solubility in Water:**

Not relevant.

**Evaporation rate:**

Not applicable.

**NFPA Ratings (Scale 0 - 4)**

Health = 1

Flammability = 0

Reactivity = 0

Personal Protection = E

<b>SECTION 10: STABILITY AND REACTIVITY</b>
---

**Stability:**

The Magnum Board products identified in section 1 are stable under ordinary conditions.

**Conditions to Avoid:**

Excessive dust generation without proper dust mask protection.

**Materials to Avoid:**

**Incompatibility:** Hydrofluoric acid will dissolve Magnesium Oxide and can generate Magnesium Chloride fumes.

**SECTION 11: TOXICOLOGICAL INFORMATION**

**Magnum Board® products are nontoxic in their intact form. The following applies to dust that may be generated during cutting and sanding.**

**Chronic Effects:**

**Inhaled:** Repeated and prolonged overexposures to dust may cause increased risk of bronchitis. It is possible that repeated inhalation exposure to Magnum Board® fiber dust over time may lead to inflammation of the lungs in humans. All necessary precautions should be taken to prevent inhalation of dust to prevent these problems.

**SECTION 12: ECOLOGICAL INFORMATION**

Because Magnesium Oxide is a naturally occurring mineral, releases that may occur into the environment are not expected to leave any hazardous material that could cause a significant adverse impact.

**SECTION 13: DISPOSAL CONSIDERATIONS**

Dispose of material, as an inert, inorganic mineral, in conformance with federal, provincial, state and local regulations. Magnum Board® is not an RCRA hazardous waste.

**SECTION 14: TRANSPORT INFORMATION**

There are no special requirements for storage and transport of Magnum Board™.

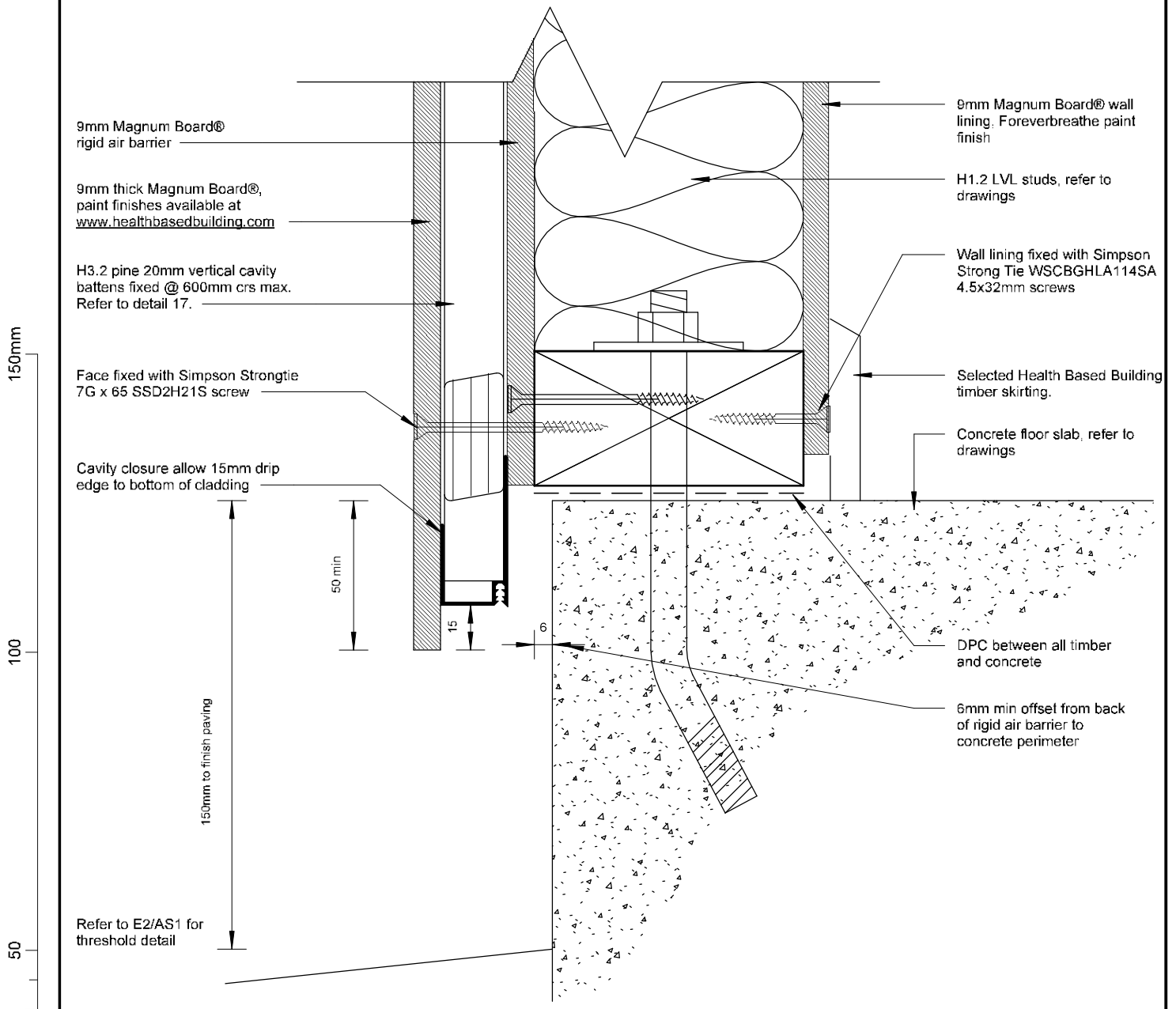
**UN No:** None allocated  
**Dangerous Goods Class:** None allocated  
**Hazchem Code:** None allocated  
**Poisons Schedule:** None allocated  
**Packing Group:** Not applicable  
**Label:** Not a DOT hazardous material.

**SECTION 15: REGULATORY INFORMATION**

**DOT Hazard Classification:** None

**Placard Requirement:** Not a DOT hazardous material.

# 16: MAGNUM BOARD & BATTEN CONSTRUCTION DETAILS:

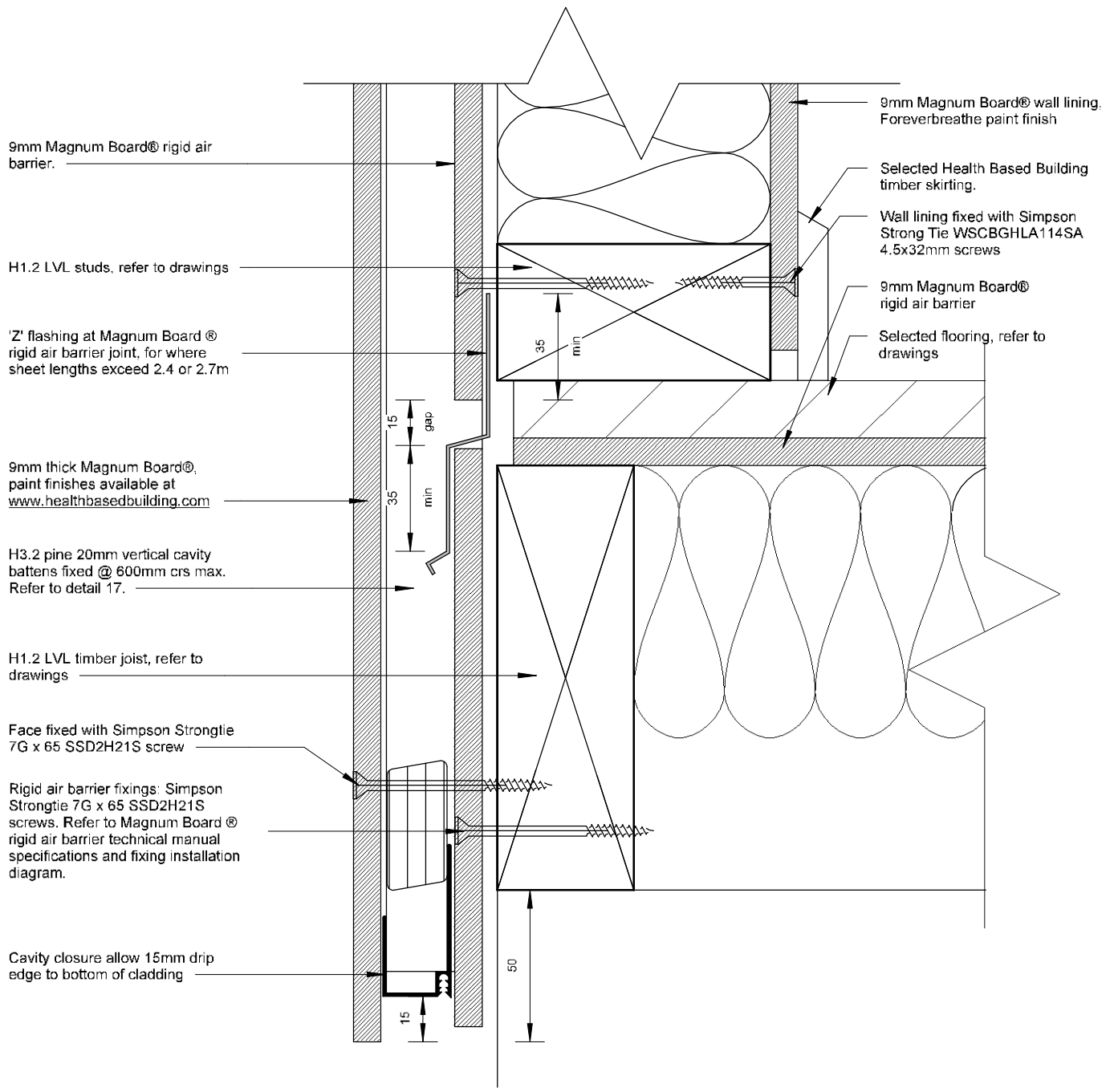


## Concrete Foundation Detail

1:2



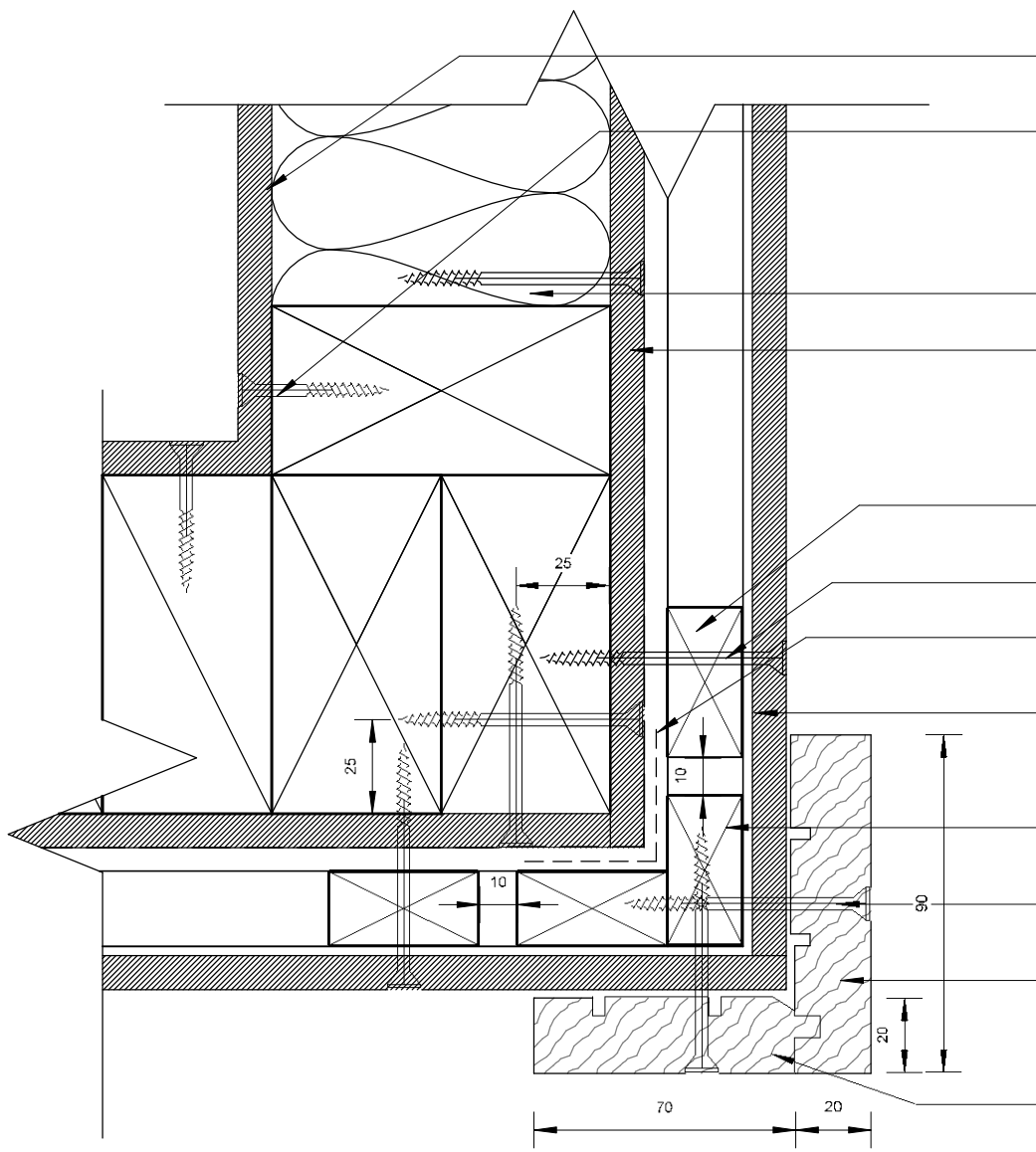
150mm  
100  
50  
0 10mm



**Timber Foundation Detail**  
1 : 2



150mm  
100  
50  
0 10mm

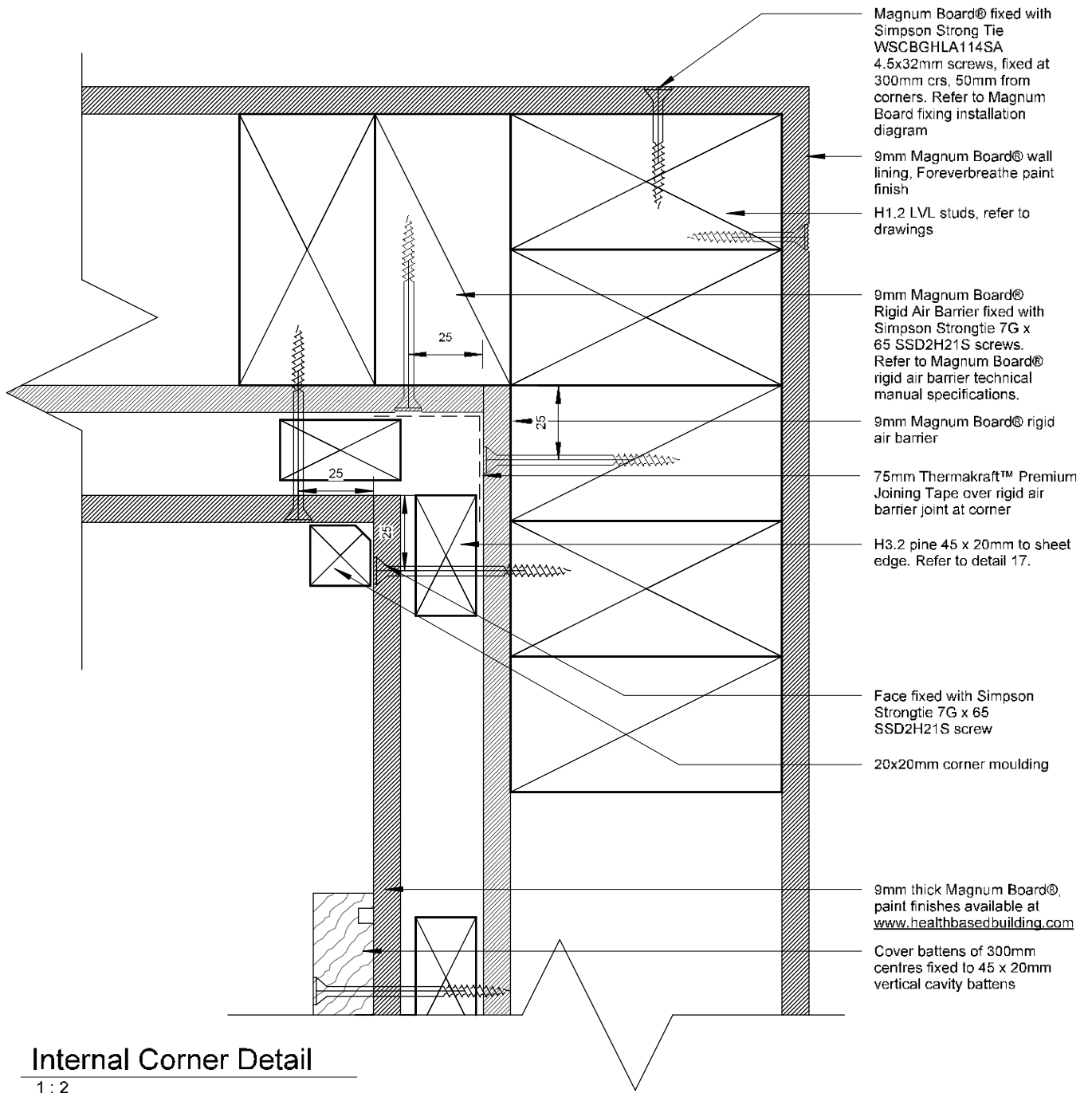


- 9mm Magnum Board® wall lining, Foreverbreathe paint finish
- Magnum Board® fixed with Simpson Strong Tie WSCBGHLA114SA 4.5x32mm screws, fixed at 300mm crs, 50mm from corners. Refer to Magnum Board fixing installation diagram
- H1.2 LVL studs, refer to drawings.
- 9mm Magnum Board® Rigid Air Barrier fixed with Simpson Strongtie 7G x 65 SSD2H21S screws. Refer to Magnum Board® rigid air barrier technical manual specifications.
- H3.2 pine 20mm vertical cavity battens fixed @ 600mm crs max. Refer to detail 17.
- Face fixed with Simpson Strongtie 7G x 65 SSD2H21S screw
- 75mm Thermakraft™ Premium Joining Tape over rigid air barrier joint at corner
- 9mm thick Magnum Board®, paint finishes available at [www.healthbasedbuilding.com](http://www.healthbasedbuilding.com)
- H3.2 pine 45 x 20 for vertical cavity battens at outside ends of sheets
- Simpson Strongtie 7G x 65 SSD2H21S screws to cavity batten only.
- Health Based Building Foreverbeech 90x20 cover board
- Health Based Building Foreverbeech 70x20 cover board

**External Corner Detail**  
1:2



150mm  
100  
50  
0 10mm



- Magnum Board® fixed with Simpson Strong Tie WSCBGHLA114SA 4.5x32mm screws, fixed at 300mm crs, 50mm from corners. Refer to Magnum Board fixing installation diagram
- 9mm Magnum Board® wall lining, Foreverbreathe paint finish
- H1.2 LVL studs, refer to drawings
- 9mm Magnum Board® Rigid Air Barrier fixed with Simpson Strongtie 7G x 65 SSD2H21S screws. Refer to Magnum Board® rigid air barrier technical manual specifications.
- 9mm Magnum Board® rigid air barrier
- 75mm Thermakraft™ Premium Joining Tape over rigid air barrier joint at corner
- H3.2 pine 45 x 20mm to sheet edge. Refer to detail 17.
- Face fixed with Simpson Strongtie 7G x 65 SSD2H21S screw
- 20x20mm corner moulding
- 9mm thick Magnum Board®, paint finishes available at [www.healthbasedbuilding.com](http://www.healthbasedbuilding.com)
- Cover battens of 300mm centres fixed to 45 x 20mm vertical cavity battens

**Internal Corner Detail**

1: 2



150mm  
100  
50  
0 10mm

Selected profiled metal roofing  
on roofing underlay

Ensure roofing underlay is laid  
horizontally and over top of eaves  
flashing. Ensure roof fixing does  
not penetrate eave flashing

Folded 0.55BMT Prefinished  
metal eaves flashing with hem  
at top edge



Selected spouting

Provide solid blocking for fixing  
Health Based Building Earthen®  
fascia board

9mm Magnum Board® soffit lining,  
flush stopped, paint finishes available at  
[www.healthbasedbuilding.com](http://www.healthbasedbuilding.com)

H3.1 soffit moulding

9mm thick Magnum Board®,  
paint finishes available at  
[www.healthbasedbuilding.com](http://www.healthbasedbuilding.com)

H3.2 pine 20mm vertical cavity  
battens fixed @ 600mm crs max.  
Refer to detail 17.

9mm Magnum Board® Rigid Air Barrier fixed  
with Simpson Strongtie 7G x 65 SSD2H21S  
screws. Refer to Magnum Board® rigid air  
barrier technical manual specifications.

Face fixed with Simpson Strongtie  
7G x 65 SSD2H21S screw

Roof structure in  
accordance with  
NZS3604 or specific  
Engineering design

9mm MAGNUM  
board® wall lining or  
rigid air barrier, paint  
finish

Wall lining fixed with  
Simpson Strong Tie  
WSCBGHLA114SA  
4.5x32mm screws

H1.2 LVL studs, refer  
to drawings

### Eave - Section Detail

1 : 5



150mm  
100  
50  
0 10mm

0.55BMT metal barge flashing to match roofing with two crests (Min.) cover to roofings

Health Based Building Earthen® fascia board

Y-Refer table 7 E2/AS1

Selected profile metal roofing on roofing underlay

Z-Refer Table 7

Roof structure as per NZS3604 2011 or specific engineering design

9mm Magnum Board® soffit lining, flush stopped, paint finishes available at [www.healthbasedbuilding.com](http://www.healthbasedbuilding.com)

H3.1 soffit moulding paint finish

Face fixed with Simpson Strongtie 7G x 65 SSD2H21S screw

9mm thick Magnum Board®, paint finishes available at [www.healthbasedbuilding.com](http://www.healthbasedbuilding.com)

H3.2 pine 20mm vertical cavity battens fixed @ 600mm crs max. Refer to detail 17.

9mm Magnum Board® Rigid Air Barrier fixed with Simpson Strongtie 7G x 65 SSD2H21S screws. Refer to Magnum Board® rigid air barrier technical manual specifications.

Roof structure in accordance with NZS3604 or specific Engineering design

9mm MAGNUM board® wall lining or rigid air barrier, paint finish

H1.2 LVL studs, refer to drawings

### Barge - Sectional Detail

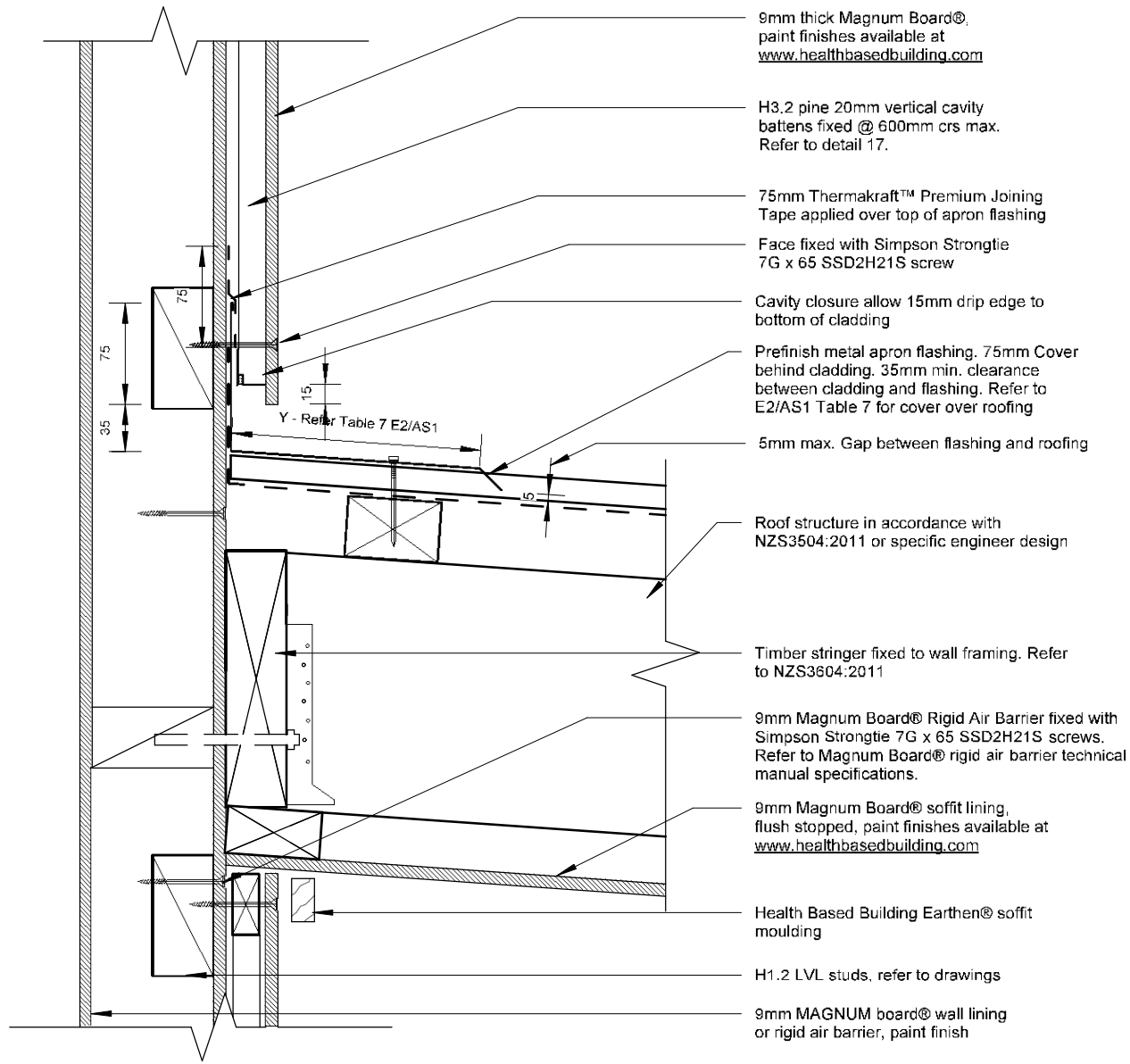
1 : 5







150mm  
100  
50  
0 10mm



### Canopy Junction - Section Detail

1:5



150mm  
100  
50  
0 10mm

9mm MAGNUM board® wall lining or rigid air barrier, paint finish

H1.2 LVL studs, refer to drawings

H1.2 Bottom plate

9mm Magnum Board® Rigid Air Barrier fixed with Simpson Strongtie 7G x 65 SSD2H21S screws. Refer to Magnum Board® rigid air barrier technical manual specifications.

9mm Magnum Board® Rigid Air Barrier fixed with Simpson Strongtie 7G x 65 SSD2H21S screws. Refer to Magnum Board® rigid air barrier technical manual specifications.

Floor joists refer to plan

100mm long cavity spacers set to fall

H1.2 Top plate

Wall lining fixed with Simpson Strong Tie WSCBGHLA114SA 4.5x32mm screws

9mm Magnum Board® Rigid Air Barrier fixed with Simpson Strongtie 7G x 65 SSD2H21S screws. Refer to Magnum Board® rigid air barrier technical manual specifications.

9mm MAGNUM board® wall lining or rigid air barrier, paint finish

9mm thick Magnum Board®, paint finishes available at [www.healthbasedbuilding.com](http://www.healthbasedbuilding.com)

H3.2 pine 45 x 20mm vertical cavity battens fixed @ 600mm crs max

75mm Thermakraft™ Premium Joining Tape over joint in Magnum board® rigid air barrier

10 - 12mm min horizontal control joint. Required where wall exceeds 2700mm in height

35mm Min cover flashing behind cladding.

35mm Min cover flashing over cladding.

Purpose made aluminium flashing. 15° min slope. Refer to table 20 of E2/AS1 for flashing durability 35mm Min cover flashing over cladding.

9mm Magnum Board® rigid air barrier

Face fixed with Simpson Strongtie 7G x 65 SSD2H21S screw

9mm thick Magnum Board®, paint finishes available at [www.healthbasedbuilding.com](http://www.healthbasedbuilding.com)

H3.2 pine 20mm vertical cavity battens fixed @ 600mm crs max. Refer to detail 17.

## Horizontal Control Joint

1 : 2

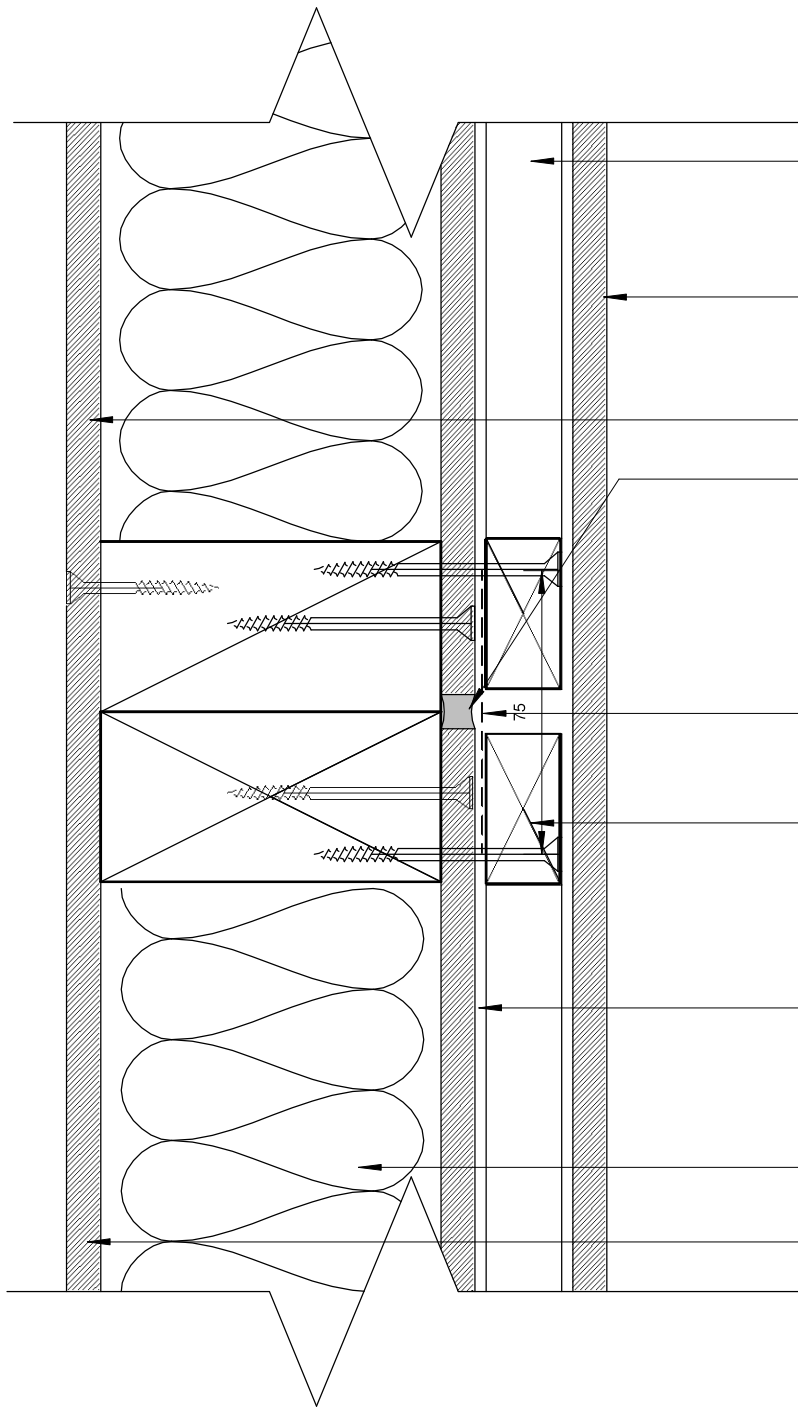
9/15

Health Based Building Magnum Board Cavity Fix Details

Horizontal Control Joint



150mm  
100  
50  
0 10mm



H3.2 pine 45 x 20mm horizontal castellated cavity battens. Refer to detail 17.

9mm thick Magnum Board®, paint finishes available at [www.healthbasedbuilding.com](http://www.healthbasedbuilding.com)

9mm MAGNUM board® wall lining or rigid air barrier, paint finish

10 - 12mm min vertical control joint. Required where wall exceeds 6m in length. Fill with continuous bead of sealant

75mm Thermakraft™ Premium Joining Tape over joint in Magnum RAB board

H3.2 pine 20mm vertical cavity battens fixed @ 600mm crs max. Refer to detail 17.

9mm Magnum Board® Rigid Air Barrier fixed with Simpson Strongtie 7G x 65 SSD2H21S screws. Refer to Magnum Board® rigid air barrier technical manual specifications.

H1.2 LVL studs, refer to drawings

Wall lining fixed with Simpson Strong Tie WSCBGHLA114SA 4.5x32mm screws

### Vertical RAB Joint

1:2



10/15

Health Based Building Magnum Board Cavity Fix Details

Vertical RAB Joint



9mm Magnum Board® Rigid Air Barrier fixed with Simpson Strongtie 7G x 65 SSD2H21S screws. Refer to Magnum Board® rigid air barrier technical manual specifications.

9mm thick Magnum Board®, paint finishes available at [www.healthbasedbuilding.com](http://www.healthbasedbuilding.com)

H3.2 pine 20mm vertical cavity battens fixed @ 600mm crs max. Refer to detail 17.

Head flashing can be penetrated with PU45 or PU35 infused into a pre-board screw hole before fixing the batten.

Cavity closure allow 15mm drip edge to bottom of cladding

Bottom of cladding must be hard down on top of flashman jamb fin

Flashman® extruded aluminium one piece cavity closure and head flashing with stop end (shown dashed)

35mm min. Flashing upstand behind cladding, and 10mm min. cover over joinery

Flashman extruded aluminium jamb flashing

Earthen® timber reveal - choose size + code

Wall lining fixed with Simpson Strong Tie WSCBGHLA114SA 4.5x32mm screws

H1.2 LVL studs, refer to drawings

9mm MAGNUM board® wall lining or rigid air barrier, paint finish

Proprietary tape over head flashing supplied and installed by flashman

H1.2 Lintel refer to plan

10mm Gap nominal to allow for head deflection and air seal

Continuous flexible air seal on PEF backing rod to perimeter of opening

75mm Thermakraft™ Premium Joining Tape. Apply according to manufacturer's instructions

Temporary packers if required are to be removed after fixing

## Typical Head Detail

1: 5

Flashman® aluminium mitre soaker supplied by flashman

3mm Gap between bottom edge of extruded aluminium flange and top of flashman sill

Flashman® extruded aluminium slimline line

Bead of sealant applied by flashman installer

Flashman back plate (Shown dashed)

H3.1 Packer supplied and installed by flashman

9mm thick Magnum Board®, paint finishes available at [www.healthbasedbuilding.com](http://www.healthbasedbuilding.com)

9mm Magnum Board® Rigid Air Barrier fixed with Simpson Strongtie 7G x 65 SSD2H21S screws. Refer to Magnum Board® rigid air barrier technical manual specifications.

H3.2 pine 20mm vertical cavity battens fixed @ 600mm crs max. Refer to detail 17.

Earthen® timber reveal

Continuous flexible air seal on PEF backing rod to perimeter of opening

10mm nominal gap

Timber packer as required

75mm Thermakraft™ Premium Joining Tape. Apply according to manufacturer's instructions

14 Gauge Hot Dip Galvanised (316 SS Where required) S.T. H.C Screws at 600mm crs with 65mm min. frame penetration. Supplied and installed by flashman®. Refer to E2/AS for durability requirements

9mm MAGNUM board® wall lining or rigid air barrier, paint finish

H1.2 LVL studs, refer to drawings

Wall lining fixed with Simpson Strong Tie WSCBGHLA114SA 4.5x32mm screws

## Typical Sill Detail

1: 5



11/15

Health Based Building Magnum Board Cavity Fix Details

Typical Head and Sill Detail



150mm  
100  
50  
0 10mm

Wall lining fixed with Simpson Strong Tie WSCBGLA114SA 4.5x32mm screws

9mm MAGNUM board® wall lining or rigid air barrier, paint finish

H1.2 LVL studs, refer to drawings

9mm Magnum Board® Rigid Air Barrier fixed with Simpson Strongtie 7G x 65 SSD2H21S screws. Refer to Magnum Board® rigid air barrier technical manual specifications.

9mm thick Magnum Board®, paint finishes available at [www.healthbasedbuilding.com](http://www.healthbasedbuilding.com)

H3.2 pine 20mm vertical cavity battens fixed @ 600mm crs max. Refer to detail 17.

Flashman® extruded 40mm aluminium jamb flashing

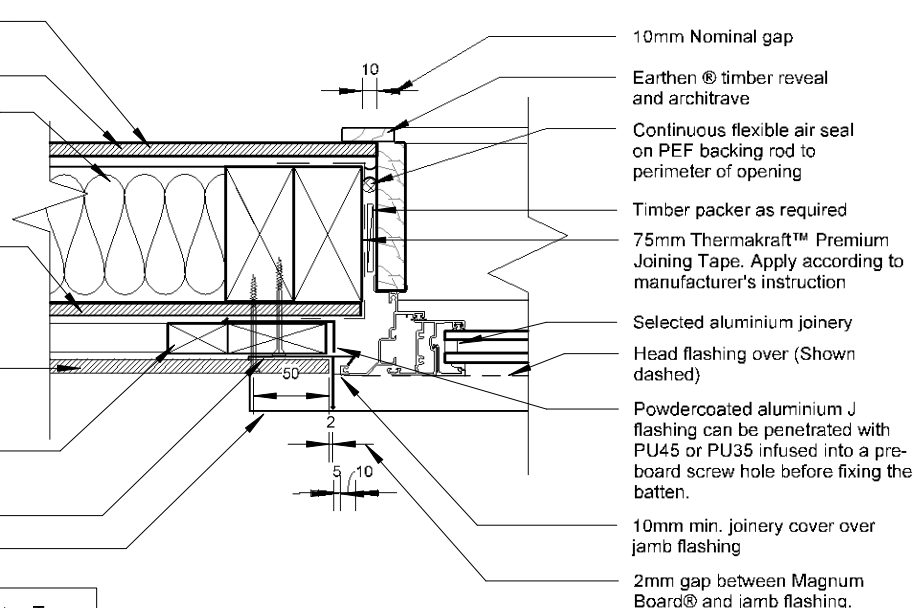
Line of flashing slimline @ sill below

Note: 75mm Thermakraft™ Premium Joining Tape residue shall be removed from the Magnum Board® face before application of Foreverbreathe paint.

**DO NOT FIX THROUGH JAMB FLASHING**

### Typical Jamb Detail

1 : 5



10mm Nominal gap

Earthen® timber reveal and architrave

Continuous flexible air seal on PEF backing rod to perimeter of opening

Timber packer as required

75mm Thermakraft™ Premium Joining Tape. Apply according to manufacturer's instruction

Selected aluminium joinery

Head flashing over (Shown dashed)

Powdercoated aluminium J flashing can be penetrated with PU45 or PU35 infused into a pre-board screw hole before fixing the batten.

10mm min. joinery cover over jamb flashing

2mm gap between Magnum Board® and jamb flashing.





150mm  
100  
50  
0 10mm

Selected flooring, refer to drawings

Flexible flashing tape as per E2/AS1 2011 figure 17b

9mm Magnum Board® rigid air barrier

H1.2 LVL timber joist, refer to drawings

Continuous flexible air seal on PEF backing rod to perimeter of opening

Fixing from top of board 10mm min from edge with 75x3.15mm nails

12mm gap between stringer and cladding/joinery  
Note: 20mm gap if deck is independently supported

Decking as per drawings, joist sizes and fixings in accordance with NZS3604:2011

H3.2 pine 45 x 20mm horizontal castellated cavity battens. Refer to detail 17.

Deck stringer and fixings in accordance with NZS3604:2011 or specific engineering design

9mm thick Magnum Board®, paint finishes available at [www.healthbasedbuilding.com](http://www.healthbasedbuilding.com)

H3.2 pine 20mm vertical cavity battens fixed @ 600mm crs max. Refer to detail 17.

9mm Magnum Board® Rigid Air Barrier fixed with Simpson Strongtie 7G x 65 SSD2H21S screws. Refer to Magnum Board® rigid air barrier technical manual specifications.

Cavity closure allow 15mm drip edge to bottom of cladding

### Deck Threshold Detail

1: 2



9mm thick Magnum Board®  
paint finishes available at  
[www.healthbasedbuilding.com](http://www.healthbasedbuilding.com)

Butyl flashing over rubber boot as per  
vanluk installation instruction

Clear MS sealant to top half of flange

Clear MS sealant 10mm wide x 6mm  
Deep sealant on bond breaker see  
E2/AS1 FIG 68of flange

Pipe penetration sloping to outside

Powder coated flange plate

Face fixed with Simpson Strongtie  
7G x 65 SSD2H21S screw

H3.2 pine 20mm vertical cavity  
battens fixed @ 600mm crs max.  
Refer to detail 17.

9mm Magnum Board® Rigid Air Barrier  
fixed with Simpson Strongtie 7G x 65  
SSD2H21S screws. Refer to Magnum  
Board® rigid air barrier technical manual  
specifications.

H3.2 pine 45x 20mm vertical cavity  
battens fixed @ 600mm crs

9mm Magnum Board® wall lining.  
Foreverbreathe paint finish

Vanluk rubber boot with adhesive  
collar. refer to [www.vanluk.co.nz](http://www.vanluk.co.nz)

Solid blocking around penetration  
with minimum 75mm overlap to RAB

9mm MAGNUM board® wall lining  
or rigid air barrier, paint finish

Wall lining fixed with Simpson Strong Tie  
WSCBGHLA114SA 4.5x32mm screws

## Pipe Penetration Section Detail

1 : 5

9mm Magnum Board® Rigid Air  
Barrier fixed with Simpson  
Strongtie 7G x 65 SSD2H21S  
screws. Refer to Magnum  
Board® rigid air barrier technical  
manual specifications.

9mm Magnum Board® wall lining,  
Foreverbreathe paint finish  
Wall lining fixed with Simpson  
Strong Tie  
WSCBGHLA114SA  
4.5x32mm screws

H1.2 LVL studs refer to  
drawings

H3.2 pine 20mm vertical cavity  
battens fixed @ 600mm crs max.  
Refer to detail 17.

Powdercoated aluminium flange plate

Support pipe with a nog under and  
screw fixed strap over

Butyl flashing over rubber boot per  
vanluk installation instruction

Vanluk rubber boot with adhesive collar.  
Refer to [www.vanluk.co.nz](http://www.vanluk.co.nz)

9mm thick Magnum Board®,  
paint finishes available at  
[www.healthbasedbuilding.com](http://www.healthbasedbuilding.com)

Clear sealant

## Pipe Penetration Plan Detail

1 : 5

150mm

100

50

0 10mm



14/15

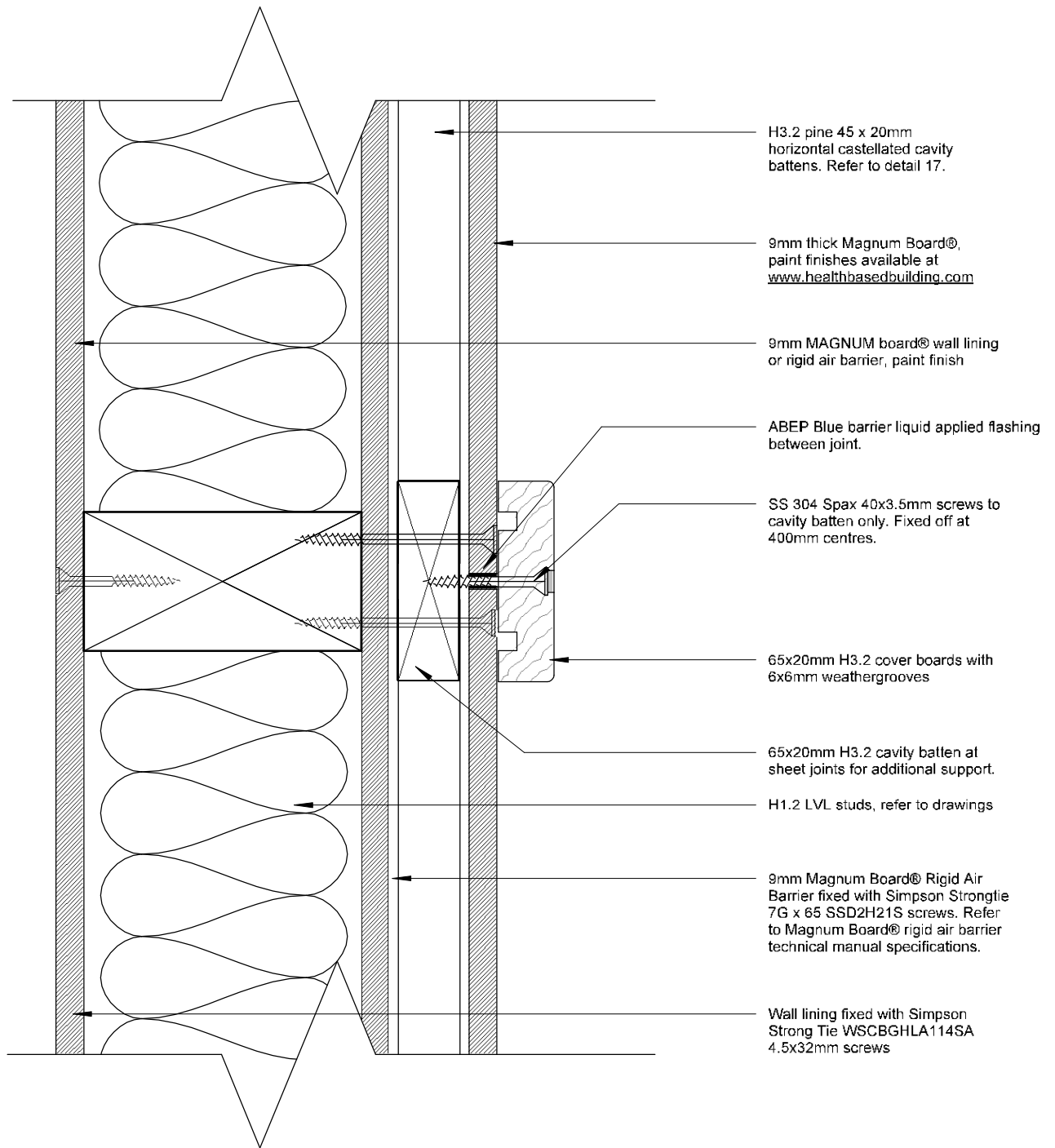
Health Based Building Magnum Board Cavity Fix Details

Pipe Penetration - Plan & Section Detail





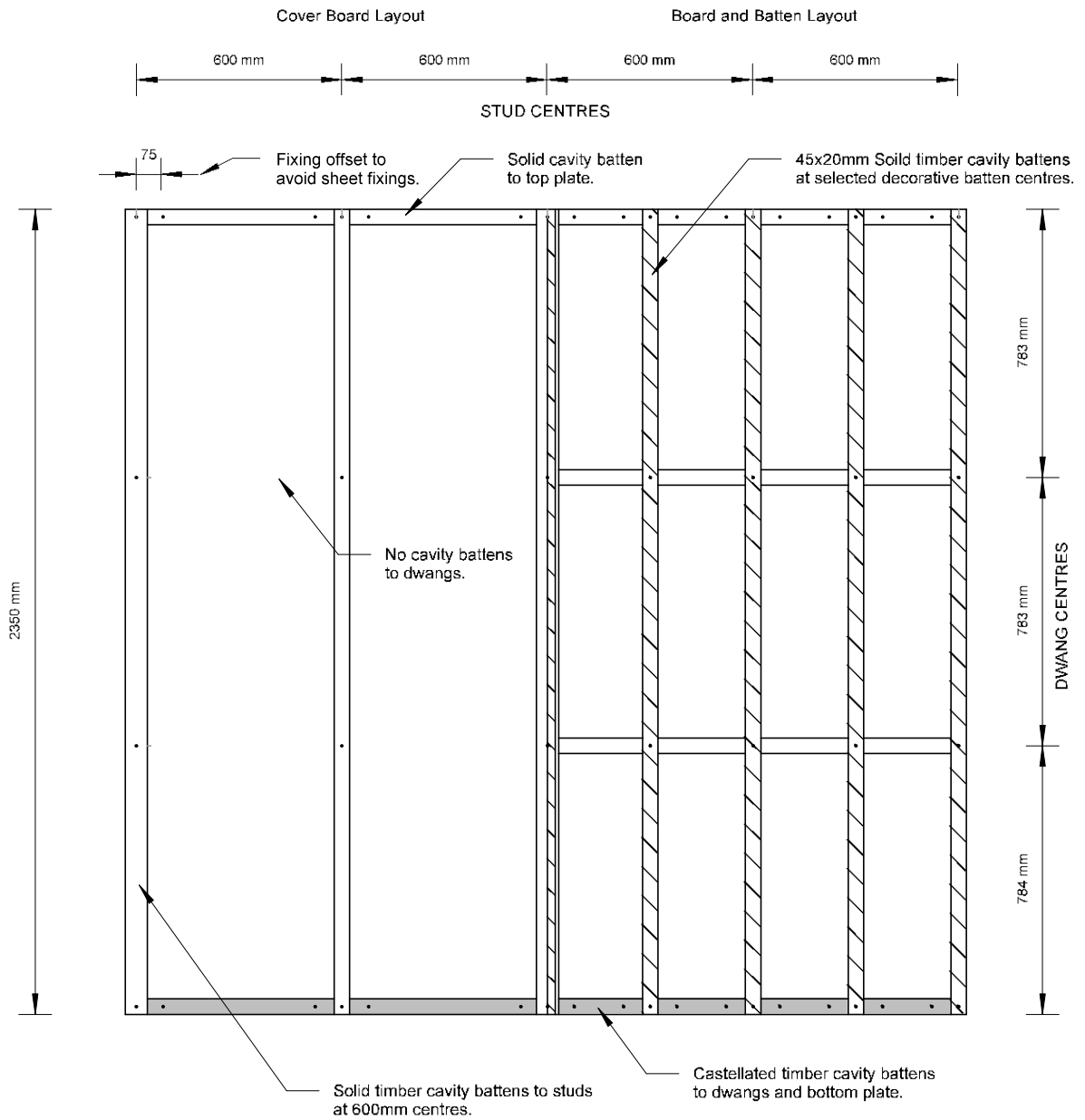
150mm  
100  
50  
0 10mm



**Vertical Cladding Joint**  
1:2



150mm  
100  
50  
0 10mm

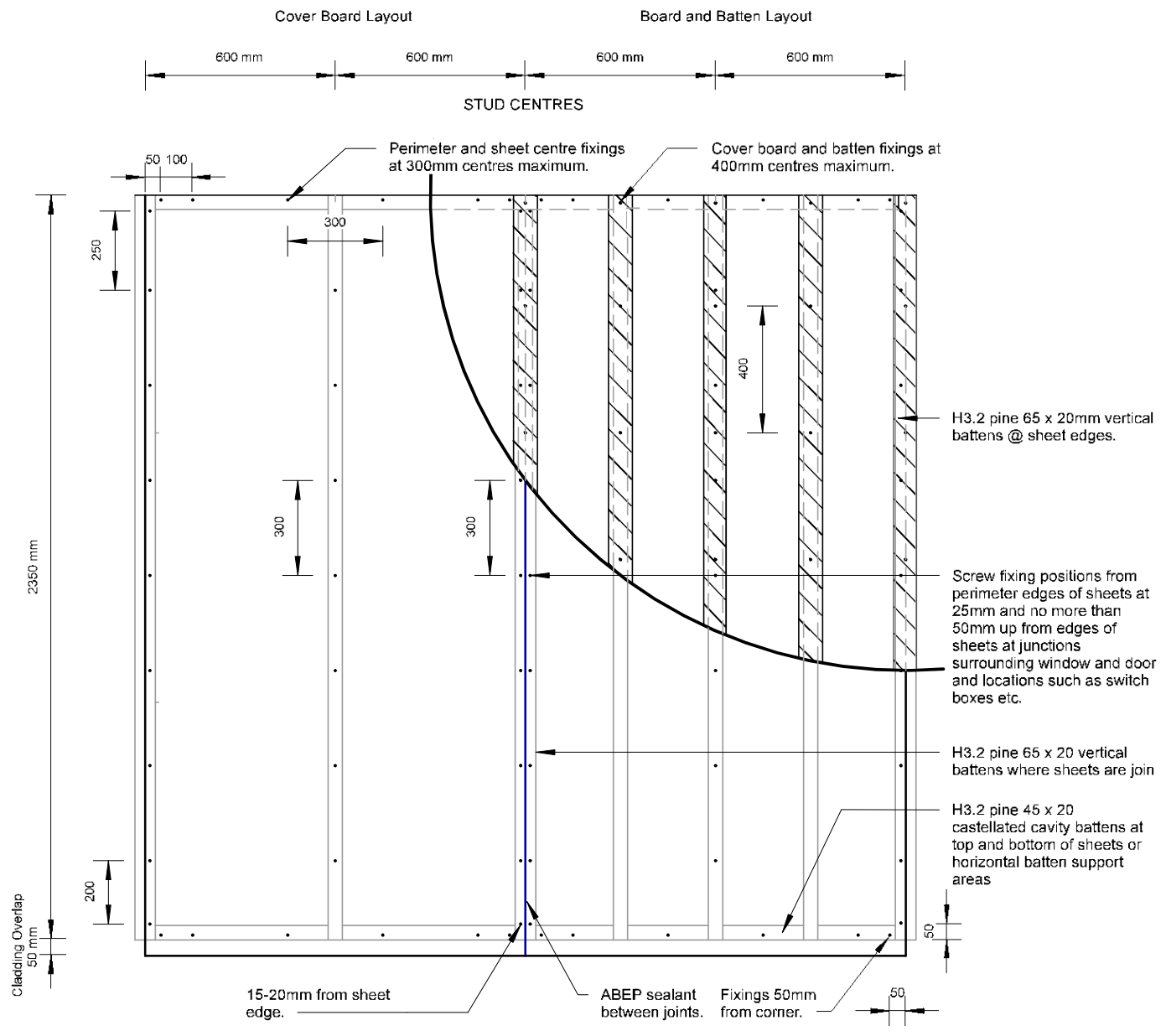


### Magnum Board Cavity Batten Layout

1 : 20



150mm  
100  
50  
0 10mm



## Magnum Board Sheet Fixing Layout

1 : 20

**Notes:**

Standard cover boards are required at sheet joints only and they are to be fixed off as per detail 15.

Board and batten decorative cover boards can be installed at 600mm, 400mm, 300mm centres. Please note that decorative cover boards are to be continuously supported with solid timber cavity batters when installed between studs. Additionally all cover boards shall be fixed off with Simpson Strongtie 7G x 65 SSD2H21S screws.

