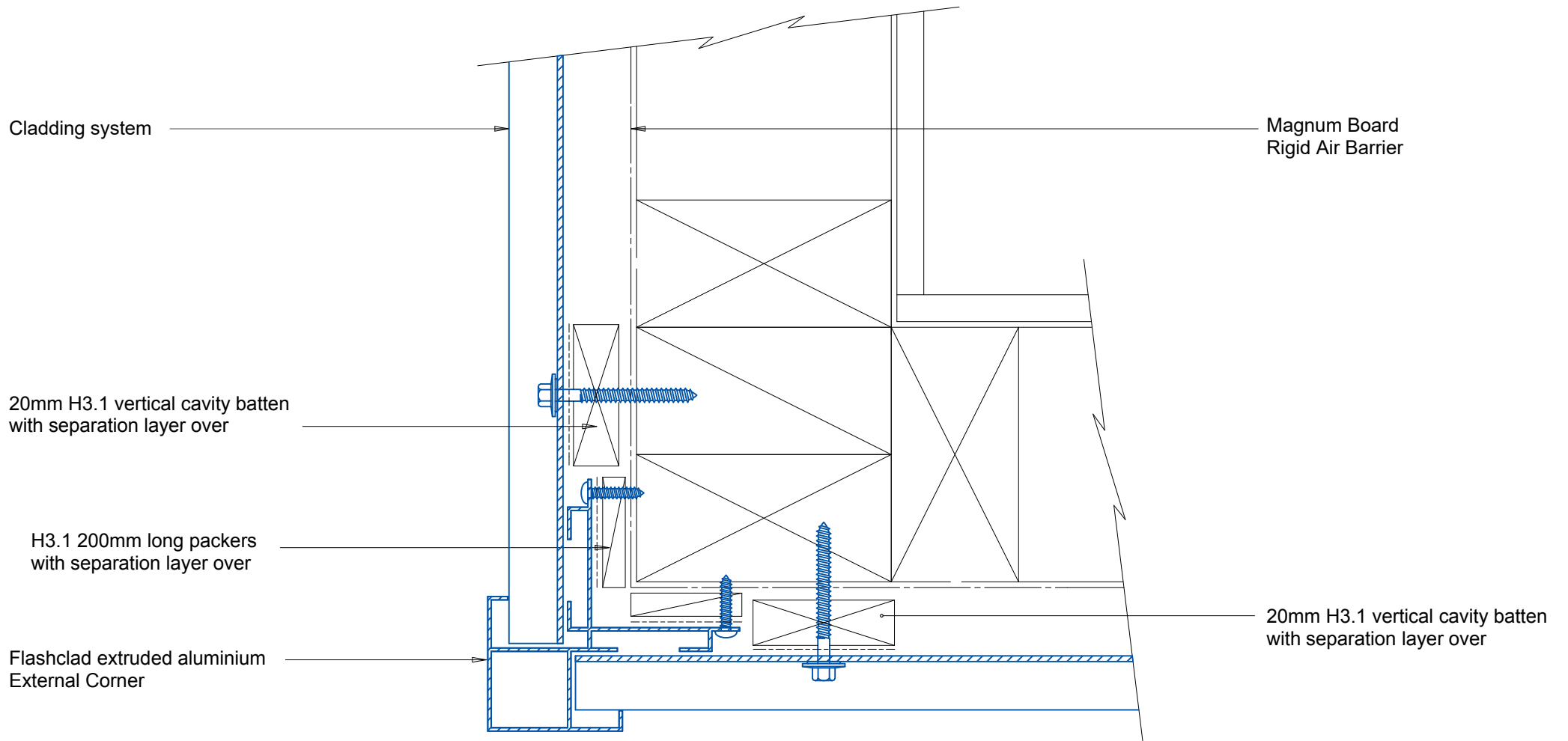




Make your space, a healthy place.

Aluminium extruded internal and external corners



EXTERNAL CORNER
Original Scale 1:2



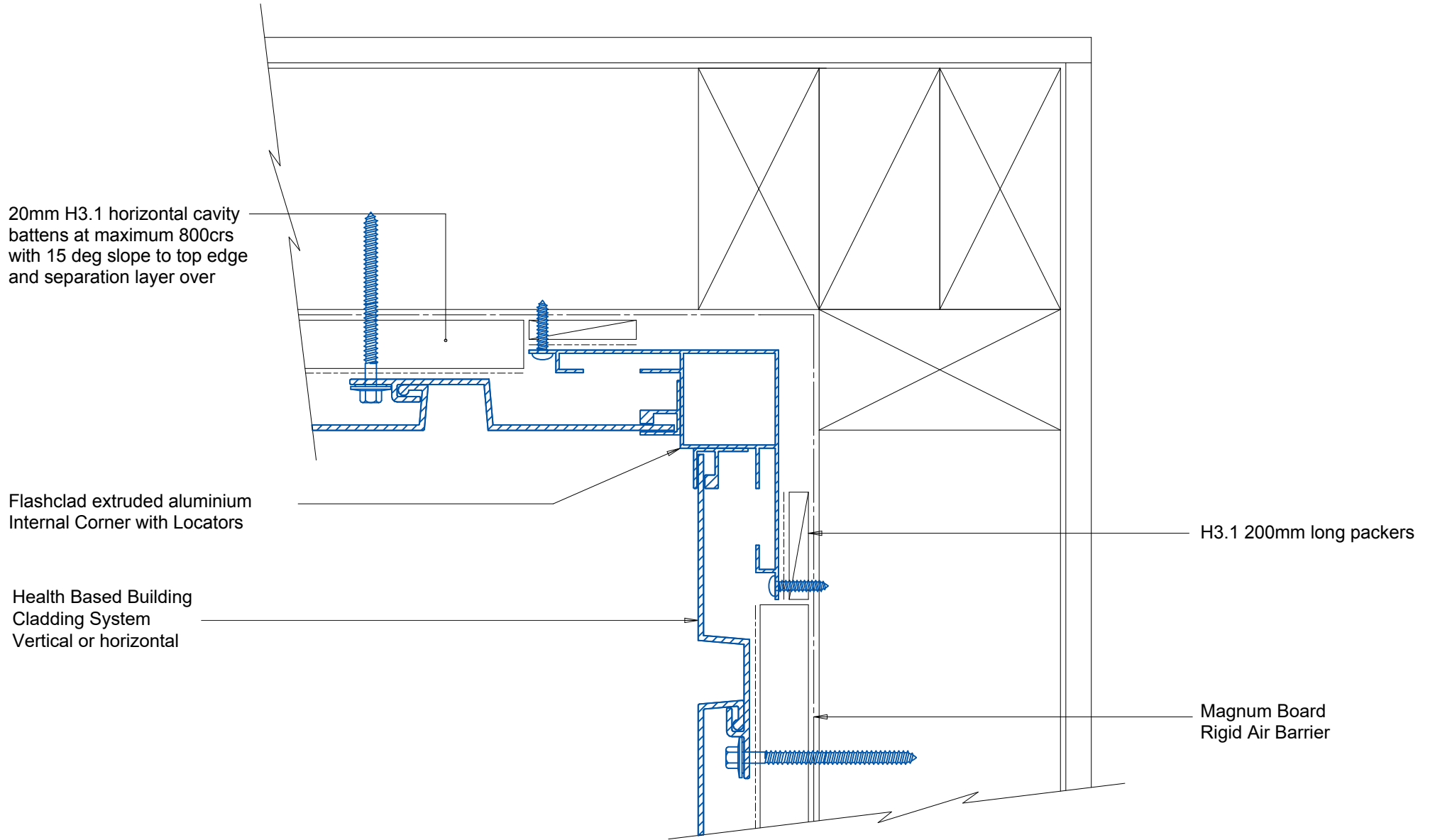
**EXTERNAL CORNER
horizontal or vertical
claddings**

**Foreverbeech Shiplap HT48'
Wub`VY`]bghU`YX`j YfhjWU`cf` \ cf]ncbHJ**



Magnum Board Weatherboard





20mm H3.1 horizontal cavity battens at maximum 800crs with 15 deg slope to top edge and separation layer over

Flashclad extruded aluminium Internal Corner with Locators

Health Based Building Cladding System Vertical or horizontal

H3.1 200mm long packers

Magnum Board Rigid Air Barrier

INTERNAL CORNER
Original Scale 1:2



INTERNAL CORNER

Health based Building
Cladding System
Vertical or horizontal

NOTE:
Fixing into studs at maximum
600mm max centres for horizontal
cladding 800mm max centres for vertical
cladding

Fix junction into dwangs
and top and bottom plates

Flashclad extruded aluminium
Cladding Junction Flashing

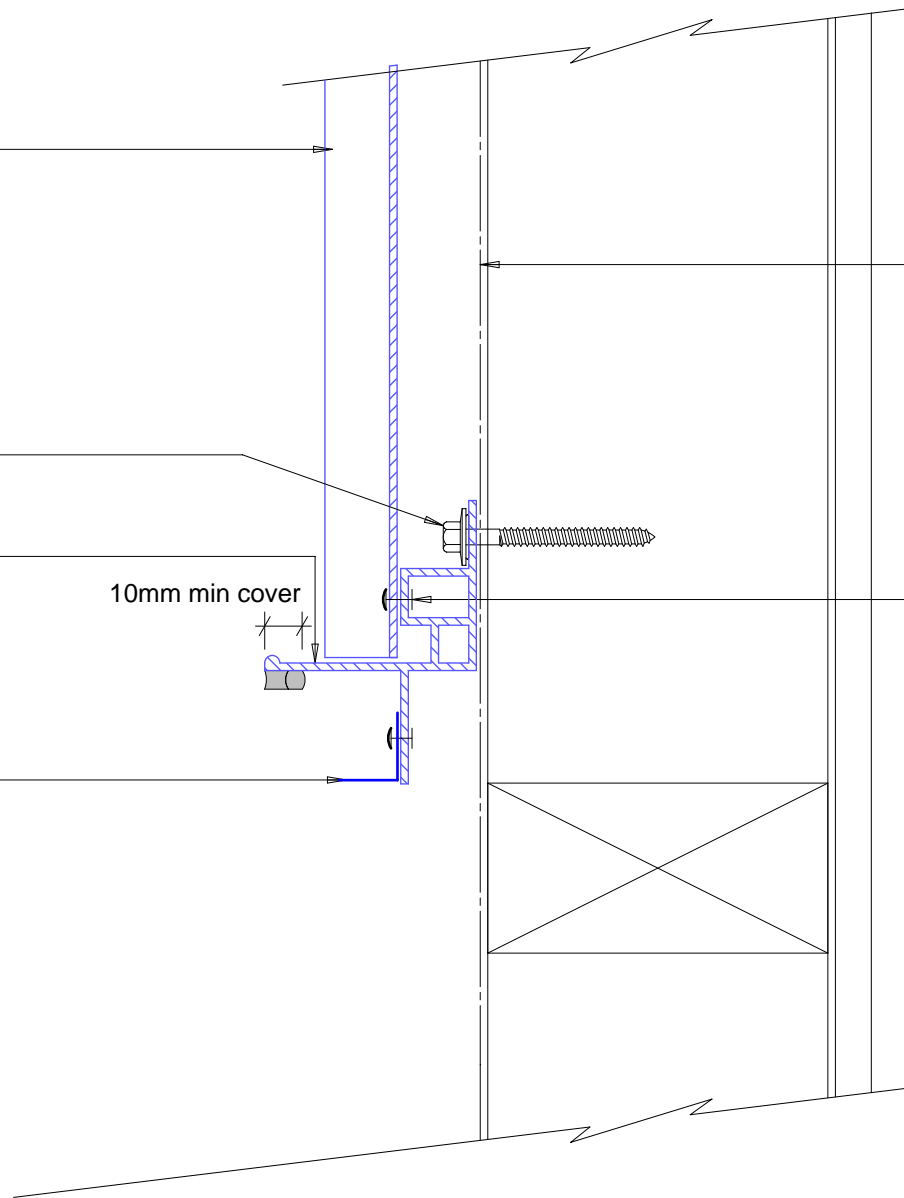
10mm min cover

Attach flashing to suit
40mm cavity

NOTE:
This detail can be modified to
suit most cladding types and
cavity depths

Magnum Board
Rigid Air Barrier

Rivet cladding to junction



CLADDING JUNCTION

Original Scale 1:2

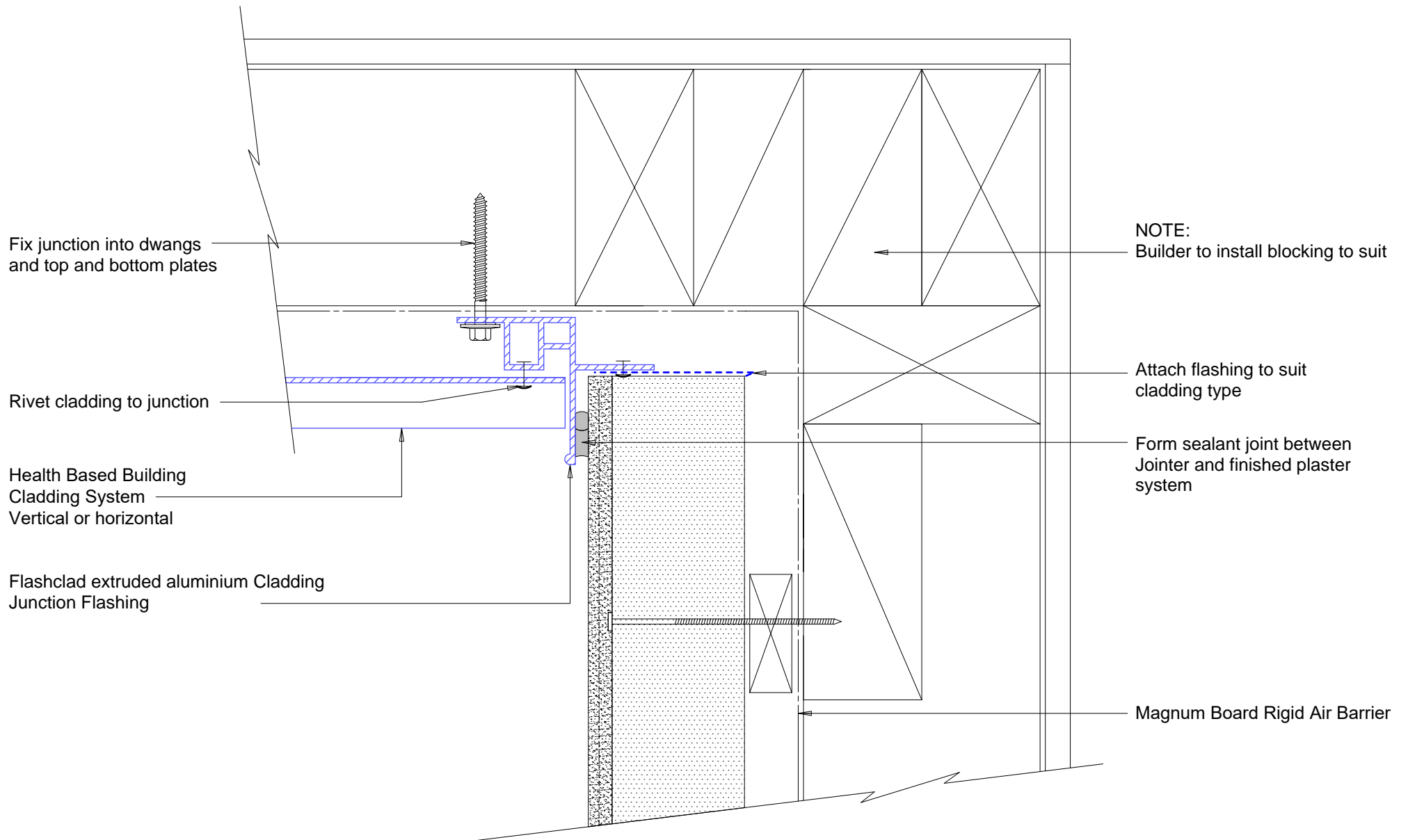
Foreverbeech Shiplap HT48'
WUb`VY`]bghU`YX`j YfhjWU`cf` \ cf]ncbHJ



CLADDING JUNCTION



Magnum Board Weatherboard



CLADDING CHANGE
INTERNAL CORNER JUNCTION
 Original Scale 1:2